



SIG SAUER INFINITE GUARANTEE™

SIG SAUER® has a history of quality and reliability that dates back more than 250 years. We understand the importance of true dependability whether it be in the line of duty, at the shooting range or on your next hunt and we continually strive to deliver products that meet and exceed the expectations of even the most demanding customers. That's why SIG SAUER is proud to offer our INFINITE GUARANTEE* on all our firearms, optics, and suppressors.

Our promise: We warrant that your new SIG SAUER firearm, optic, or suppressor was originally manufactured free of defects in material, workmanship, electrical, optical, and mechanical function. We will repair your SIG SAUER

product in the event it becomes damaged or is defective in any way, at no charge to you. If we cannot repair your product, we will replace it or, if we cannot replace it, we will provide you with a replacement of equal value. All with no questions asked, forever.

SIG SAUER® Infinite Guarantee™

- Fully Transferable
- No Time Limit Applies
- No Warranty Card Required
- No Charge
- No Receipt Required

Please note that our Infinite Guarantee excludes coverage for intentional damage, misuse, cosmetic damage that does not affect the performance of the optic, loss, theft, or unauthorized repair or modification. Excludes Tritium components.

Customers seeking warranty coverage must first obtain a Return Merchandise Authorization (RMA) by contacting SIG SAUER Customer Service and return the product unloaded and freight prepaid.

ANY WARRANTIES IMPLIED BY LAW, INCLUDING ANY IMPLIED WARRANTIES OF MERCHANTABILITY OR FITNESS FOR A PARTICULAR PURPOSE, ARE EXPRESSLY LIMITED IN DURATION TO THE DURATION OF THIS WRITTEN WARRANTY PERIOD. REPAIR, ALTERATION, OR REPLACEMENT AS PROVIDED HEREIN IS YOUR EXCLUSIVE REMEDY FOR ANY DEFECTIVE PRODUCT. IN NO EVENT SHALL SIG SAUER OR ANY COMPANY AFFILIATED WITH SIG SAUER BE LIABLE FOR ANY SPECIAL, INCIDENTAL, OR CONSEQUENTIAL DAMAGES OF ANY KIND ARISING OUT OF THE PURCHASE OR USE OF THIS PRODUCT, WHETHER BASED UPON CONTRACT, TORT, STATUTE, OR OTHERWISE. Some states do not allow the limitation of implied warranties, or the exclusion or limitation of incidental or consequential damages, so some or all of the above limitations or exclusions may not apply to you. This warranty gives you specific legal rights, and you may also have other rights which vary from State to State.

This warranty applies to commercial customers only and does not apply to government, non-commercial, or non-US customers. Non-US COMMERCIAL CUSTOMERS MUST PURCHASE PRODUCT THROUGH AN AUTHORIZED SIG SAUER DEALER WITHIN THEIR COUNTRY OF RESIDENCE FOR THIS WARRANTY TO APPLY.

Visit sigsauger.com for full warranty details.

BUTTON BATTERY WARNING INFORMATION

⚠ WARNING

- **INGESTION HAZARD:** This product contains a button cell or coin battery.
- **DEATH** or serious injury can occur if ingested.
- A swallowed button cell or coin battery can cause **Internal Chemical Burns** in as little as **2 hours**.
- **KEEP** new and used batteries **OUT OF REACH** of **CHILDREN**
- **Seek immediate medical attention** if a battery is suspected to be swallowed or inserted inside any part of the body.



- Keep the battery in the original packaging until ready to use.
- Remove and immediately recycle or dispose of used batteries according to local regulations and keep away from children. Do NOT dispose of batteries in household trash or incinerate.
- For treatment information call, The National Battery Ingestion Hotline (NBIH) 1-(800) 498-8666.
- Even used batteries may cause severe injury or death.
- Call a local poison control center for treatment information.
- Compatible battery: CR2032 Nominal voltage: 3V
- Do not mix old and new batteries, different brands or types of batteries, such as alkaline, carbon-zinc, or rechargeable batteries.
- Ensure the batteries are installed correctly according to polarity (+ and -).
- Remove and immediately recycle or dispose of batteries from equipment not used for an extended period of time according to local regulations.
- Non-rechargeable batteries are not to be recharged.
- Do not force discharge, recharge, disassemble, heat above 212°F(100°C) or incinerate. Doing so may result in injury due to venting, leakage or explosion, resulting in chemical burns.
- Always completely secure the battery compartment. If the battery compartment does not close securely, stop using the product, remove the batteries, and keep them away from children.

NOTICE: Export restrictions may apply – this product may be controlled either by the ITAR or EAR.

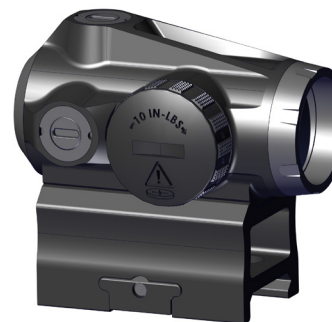


WARNING: CANCER AND REPRODUCTIVE HARM—www.P65warnings.ca.gov



SIG SAUER
sigsauger.com

FOR PRODUCT SERVICE ON THIS MODEL,
PLEASE CALL 603-610-3000
12100 SW Tualatin Rd, Tualatin, OR 97062 USA



ROMEO-MSR™ GEN II

1X20 MM COMPACT ILLUMINATED DOT SIGHT

OPERATOR'S MANUAL

SIG SAUER



Additional information about SIG SAUER products, SIG SAUER Academy and the SIG Experience Center, Special Programs, and additional support can be found by scanning the QR code to visit sigsauger.com.

INTRODUCTION

Congratulations on your purchase of the SIG SAUER® ROMEO-MSR GEN II line of Illuminated Dot Sights, providing a compact 1x enclosed aiming solution for today's carbine platforms. The crisp 2 MOA dot is powered by a new CR2032 battery, pumping runtime up 75% over the original! The rotary dial is relocated to the right side, featuring improved ergonomics and bold engraving for fast and intuitive brightness control while the entire sight gets a complete, ruggedized overhaul.

The ROMEO-MSR GEN II Line of Illuminated Dot Sights is covered by SIG SAUER Infinite Guarantee.

CONTENTS:

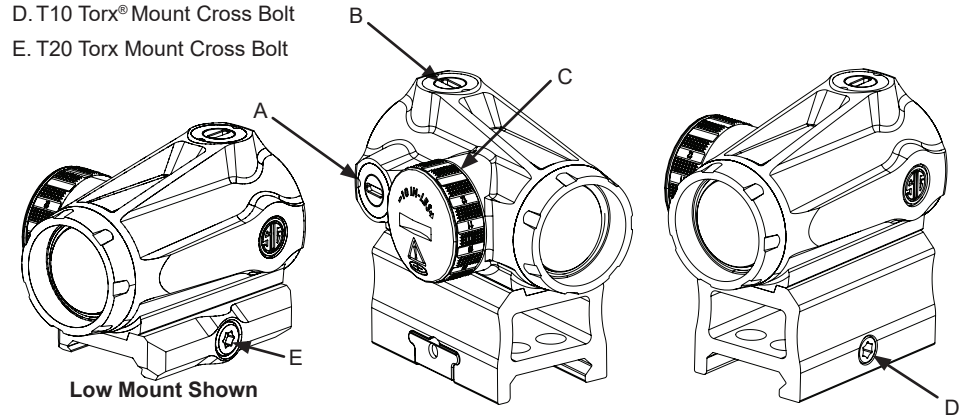
- ROMEO-MSR GEN II Illuminated Dot Sight
- Rubber Bikini Lens Cover
- Multi-Tool
- CR2032 Battery
- Lens Cleaning Cloth
- Operator's Manual

KEY FEATURES:

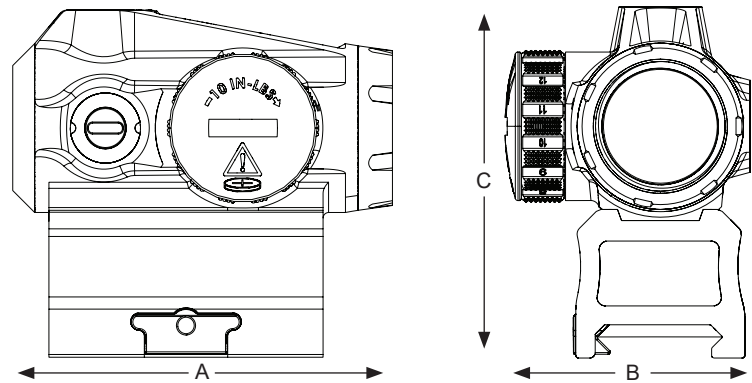
- High performance lens coatings for excellent light transmittance, glare control, and durability for all situations.
- 2 MOA dot for close quarters to mid-range target engagements.
- Ultra-compact size and weight with unlimited eye-relief and parallax free operation.
- 35,000 hour runtime.
- M1913 Absolute Co-Witness or Low Mount.
- Dependable IPX-7 waterproof and fog proof performance.
- SIG SAUER® Infinite Guarantee™

PRODUCT IDENTIFICATION:

- A. Windage Adjustment
- B. Elevation Adjustment
- C. Illumination Control & Battery Compartment
- D. T10 Torx® Mount Cross Bolt
- E. T20 Torx Mount Cross Bolt



ROMEO-MSR GEN II SPECIFICATIONS		Standard SKU	Low Mount SKU
Magnification		1x	
Dot Size		2 MOA	
Battery		CR2032	
Run Time		35,000 hrs	
Clear Aperture		20 mm	
Illumination Settings		10 Day / 2 NV	
Elevation Adjustment Range [min]		+/- 50 MOA	
Windage Adjustment Range [min]		+/- 50 MOA	
Adjustment Travel Per Click		1 MOA	
Waterproofing		IPX-7	
Length A*		2.7 in / 69.7 mm	
Width B*		1.8 in / 44.8 mm	
Height C*		2.5 in / 62.9 mm	1.9 in / 49mm
Weight [with battery installed]		5.7 oz / 161 g	5 oz / 143 g
Sight Height to Optical Axis		1.41" Absolute Co-Witness	0.88" Low Mount



WARNING UNLOAD/CLEAR

IF THE OPTIC IS MOUNTED TO A FIREARM, ALWAYS ENSURE THAT THE FIREARM IS UNLOADED AND CLEARED WITH THE SAFETY ON BEFORE ADJUSTING THE SIGHT OR CHANGING THE BATTERY.

OPERATION

Installing the Battery

- The battery compartment (C) is located on the right side of the sight. Use a coin, flathead, spare CR2032 battery, or included multi-tool to unscrew the cap counterclockwise. Install the CR2032 coin cell with the + terminal facing up. It should snap firmly into the contacts. Reinstall the battery cap by rotating the cap in the clockwise (CW) direction to 10 in-lbs.

NOTE

Failure to properly torque the battery cap in a clockwise (CW) direction to 10 in-lbs could lead to an ingestion hazard of the coin battery, intermittent LED illumination, or allow moisture into the battery compartment.

Turning Sight On and Off / Illumination Control

- The rotary illumination control (C) can be rotated nearly 360 degrees. At each end of travel, there is an OFF position, which also acts as a hard stop. The user can select from 10 daytime and 2 NV brightness settings. To increase the dot brightness, rotate the illumination control clockwise. To decrease the brightness, rotate counterclockwise. The ROMEO-MSR GEN II DOES NOT feature MOTAC (Motion Activated Illumination), so be sure to turn the sight off prior to long-term storage. The ROMEO-MSR GEN II provides up to 35,000 hours of runtime during normal use.

MOUNTING THE SIGHT

- Standard SKU's are configured to 1.41" absolute co-witness, while select SKU's are built on a low mount. Both are intended for use on most types of firearms with MIL-STD 1913 Picatinny Rail. The sight can be mounted anywhere on the rail; forward or back.
- To install the sight on a firearm, set the mount on the rail at the preferred eye relief, push the sight forward into the rail lugs and torque the T10 Torx bolt (D) to 27 in-lbs or T20 Torx bolt (E) to 65 in-lbs.

SIGHT ADJUSTMENTS

- Elevation adjustments - Using the provided multi-tool, coin, or shell casing, turn the Elevation Adjustment [B] counterclockwise (CCW) to move the Point of Impact (POI) UP. To move the POI DOWN, rotate clockwise (CW). Each click moves the POI 1 MOA.
- Windage Adjustments - Using the provided multi-tool, coin, or shell casing, turn the Windage Adjustment [A] counterclockwise (CCW) to move the POI RIGHT. To move the POI LEFT, rotate clockwise (CW). Each click moves the POI 1 MOA.

MAINTENANCE

CAUTION

ALWAYS BLOW DUST OR DEBRIS FROM THE LENSES PRIOR TO USING ANY CLOTH OR LENS PEN. FAILURE TO DO THIS MAY RESULT IN SCRATCHING OF THE LENSES.

- Cleaning - Keep the lenses clear by using a soft cloth (provided) or lens pen.
- Protect the lenses by using the provided rubber bikini cover during storage and transport.

TROUBLE SHOOTING

POI changes between groups, when shooting from a set distance:

- Check that the mounting screws and cross bolt are properly torqued.
- Check and clean the firearm.
- Check for variations in the ammunition.

Intermittent LED Dot Illumination during live fire:

- Re-torque the battery cap to 10 in-lbs.
- Replace the battery or remove the battery and clean the circuit board contacts and battery surfaces.