



ELECTRO-OPTICS



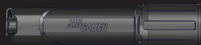
\*FOXTROT-MSR FULL SIZE SHOWN ABOVE

# FOXTROT-MSR<sup>TM</sup>

RIFLE MOUNTED WHITE LIGHT

OPERATOR'S MANUAL

**SIGSAUER**



## TABLE OF CONTENTS

Introduction . . . . .	3
Contents: . . . . .	4
Key Features: . . . . .	5
Product Identification: . . . . .	6
Battery Installation Or Removal . . . . .	7
Recharging 18650 & 18350 High-Capacity Li-Ion Rechargeable Battery . . . . .	9
Selecting And Installing The Proper Rail Mount . . . . .	10
Installing Tape Switch . . . . .	14
Installing Picatinny Rail Cable Keeper . . . . .	16
Operation . . . . .	18
Cleaning And Maintenance . . . . .	20
Full Size Specifications . . . . .	23
Compact Specifications . . . . .	25
Sig Sauer Electro-Optics Infinite Guarantee®/Limited Lifetime Warranty . . . . .	26
Sig Sauer Electronic Component Limited 5-Year Warranty . . . . .	28

Scan the QR code to visit [sigsauer.com](http://sigsauer.com) where you will find additional information about SIG SAUER products, SIG SAUER Academy and the SIG Experience Center, Special Programs, and additional support.



## INTRODUCTION

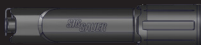
The FOXTROT-MSR™ is the ultimate solution for low-light scenarios. Crafted to perfection, this rifle-mounted white light is your companion for low-light training, home defense, and duty applications.

Engineered for excellence, the FOXTROT-MSR™ seamlessly integrates with firearms utilizing either M-LOK™ or MIL-STD 1913 rail system, ensuring compatibility across a wide range of platforms.

Experience unmatched performance and reliability in any situation. Illuminate your path to precision.

The FOXTROT-MSR is covered by the SIG SAUER Electro-Optics Infinite Guarantee and Electronics Component Limited 5-Year Warranty.





## CONTENTS:

### **FOXTROT-MSR™, FULL SIZE, RAIL MOUNTED WHITE LIGHT**

- FOXTROT-MSR™, FULL SIZE
- 1 Picatinny Rail Mount
- 1 M-Lok™ Rail Mount
- 1 Remote Tape Switch
- 1 Picatinny Rail Cable Keeper
- (2) 18650 High-Capacity Li-ion Rechargeable Battery, With USB-C Charging Port
- 1 USB-C Charging Cable
- 4 Mounting Screws
- 1 Tape Switch O-Ring
- Torx™ T25 Wrench
- Torx™ T20 Wrench
- 4mm Allen Key
- 2.5mm Allen Key

### **FOXTROT-MSR™, COMPACT, RAIL MOUNTED WHITE LIGHT**

- FOXTROT-MSR™, COMPACT
- 1 Picatinny Rail Mount
- 1 M-Lok™ Rail Mount
- 1 Remote Tape Switch
- 1 Picatinny Rail Cable Keeper
- (2) 18350 High-Capacity Li-ion Rechargeable Battery, With USB-C Charging Port
- 1 USB-C Charging Cable
- 4 Mounting Screws
- 1 Tape Switch O-Ring
- Torx™ T25 Wrench
- Torx™ T20 Wrench
- 4mm Allen Key
- 2.5mm Allen Key

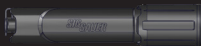
## **KEY FEATURES:**

### **FOXTROT-MSR™, FULL SIZE, RAIL MOUNTED WHITE LIGHT**

- 1350 Lumens
- 33,000 Candela
- Up to 1.5 Hours of Runtime
- Momentary Activation Via Remote Tape Switch With Surefire® Compatible Plug
- Momentary or Latching Activation Via Integrated Tail Cap Push Button
- Scout Mount™ Compatible
- Flexcore Technology Allows The Light To Run Using; 1 x 18650 High-Capacity Li-ion Rechargeable Battery or 2 x CR123A Lithium Batteries (optional, not included)
- Machined 6061 Aluminum Housing

### **FOXTROT-MSR™, COMPACT, RAIL MOUNTED WHITE LIGHT**

- 1350 Lumens
- 33,000 Candela
- Up to 1 Hour of Runtime
- Momentary Activation Via Remote Tape Switch With Surefire® Compatible Plug
- Momentary or Latching Activation Via Integrated Tail Cap Push Button
- Scout Mount™ Compatible
- Operates off of 1 x 18350 High-Capacity Li-ion Rechargeable Battery
- Machined 6061 Aluminum Housing



## PRODUCT IDENTIFICATION:

- A. Bezel
- B. Integrated Push Button Activation
- C. Remote Tape Switch Plug Interface
- D. Remote Tape Switch With Surefire® Compatible Plug
- E. Picatinny Rail Mount
- F. M-LOK™ Rail Mount
- G. Picatinny Rail Cable Keeper
- H. Mounting Screws



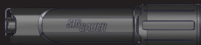
**WARNING UNLOAD/CLEAR**

**PRIOR TO INSTALLATION, BATTERY CHANGE, OR MAINTENANCE, FOLLOW THE FIREARM OPERATOR'S MANUAL TO ENSURE THE FIREARM IS UNLOADED AND CLEARED. KEEP FIREARM POINTED IN A SAFE DIRECTION. FAILURE TO COMPLY COULD RESULT IN INJURY OR DEATH.**

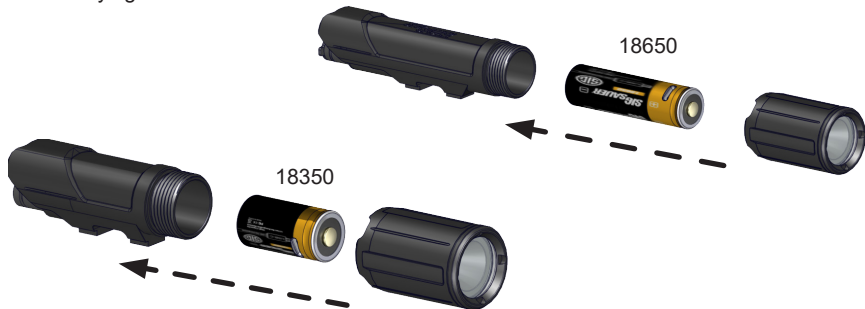
**BATTERY INSTALLATION OR REMOVAL**

1. Remove bezel by unscrewing it counterclockwise from the flashlight.





2. **Full Size** - Insert 1 x 18650 High-Capacity Li-ion Rechargeable Battery or 2 x CR123A Lithium Batteries into the battery compartment of the flashlight, negative (-) end first. Replace the bezel and turn it clockwise until fully tightened.
3. **Compact** - Insert 1 x 18350 High-Capacity Li-ion Rechargeable Battery into the battery compartment of the flashlight, negative (-) end first. Replace the bezel and turn it clockwise until fully tightened.





## RECHARGING 18650 & 18350 HIGH-CAPACITY LI-ION RECHARGEABLE BATTERY

To recharge the supplied 18650 or 18350 rechargeable battery use the supplied USB-C cable and insert the USB-C end of the cable into the USB-C port on the battery. Insert the USB side of the cable into a USB outlet. When the battery is fully charged the LED on the (+) end of the battery will turn green.



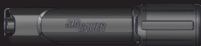
18350



18650

RED = CHARGING  
GREEN = FULLY CHARGED

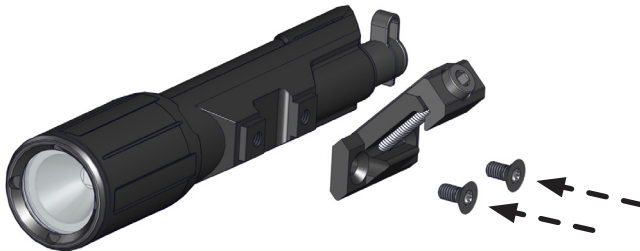


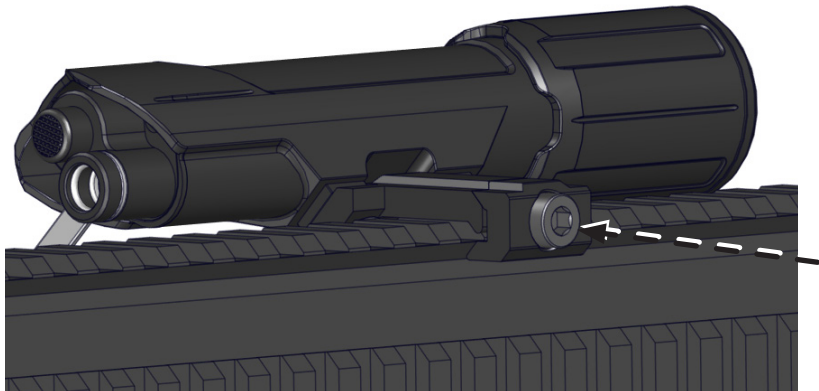


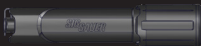
## SELECTING AND INSTALLING THE PROPER RAIL MOUNT

The FOXTROT-MSR™ comes with two rail mounts. The picatinny rail mount is to be used with a MIL-STD 1913 rail. The M-LOK™ mount is meant to be used with an M-LOK rail.

To install the picatinny rail mount locate two mounting screws that are included in your packaging. Using the included Torx™ T20 wrench install the picatinny rail mount to the flashlight body. Tighten mounting screws to 30 in-lbs. Once the mount is installed to the flashlight body, loosen the picatinny clamp screw with the provided 4mm Allen key. Once loosened, install to a MIL STD 1913 rail and tighten clamp screw. Tighten picatinny mount screw to 35 in-lbs.



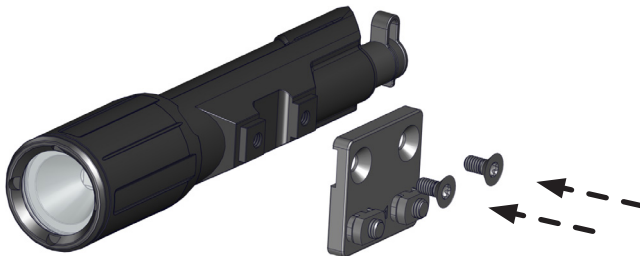


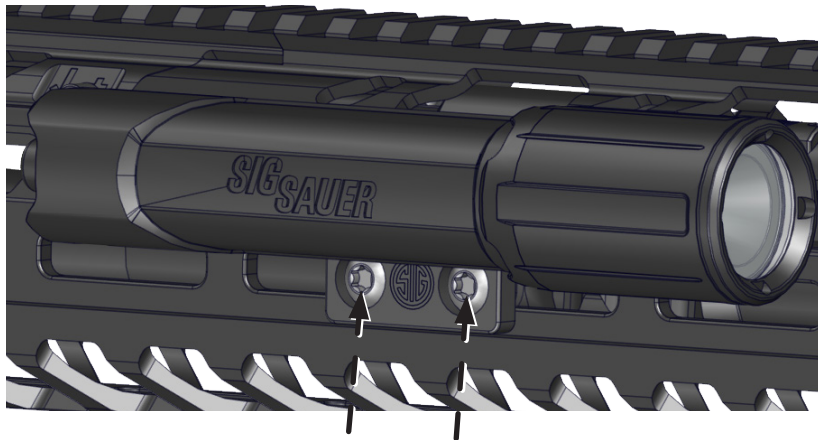


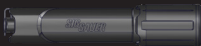
To install the M-LOK™ rail mount locate two mounting screws that are included in your packaging. Using the included Torx™ T20 Wrench install the M-LOK™ mount to the flashlight body. Tighten mounting screws to 30 in-lbs. Once the mount is installed to the flashlight body loosen the screws on your M-LOK™ mount with the provided Torx™ T25 wrench. Once loosened install to an M-LOK™ rail and tighten screws to torque listed below.

35 in-lbs for attaching metal accessories to metal handguards.

15 in-lbs for attaching polymer or metal accessories to polymer handguards.



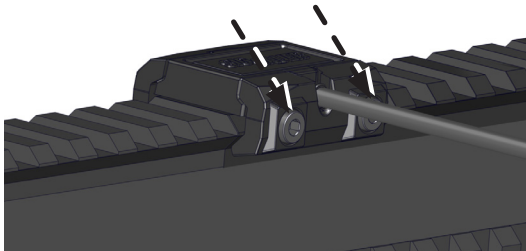


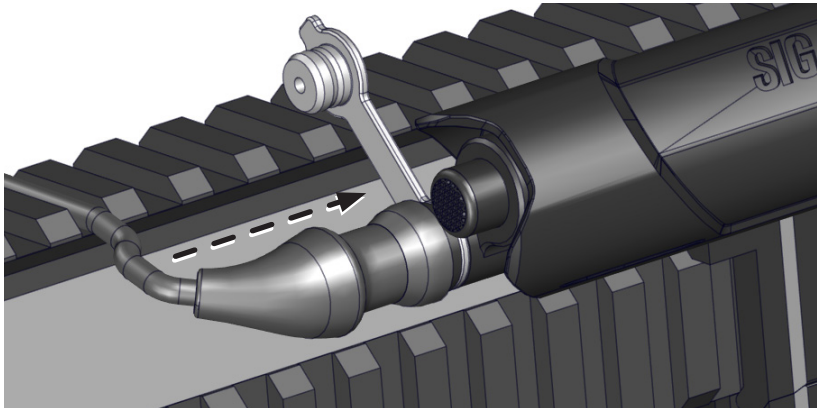


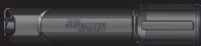
## INSTALLING TAPE SWITCH

To install the provided tape switch; use the provided 2.5mm Allen key to loosen the two clamp screws enough to be able to install on a MIL STD 1913 rail. Once installed on a MIL STD 1913 rail tighten screws to 20 in-lbs.

Next locate the plug on the tape switch and insert the plug into the rear of the flashlight firmly until the plug is inserted fully seated in the flashlight.

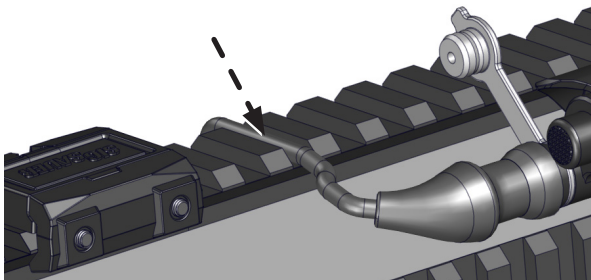




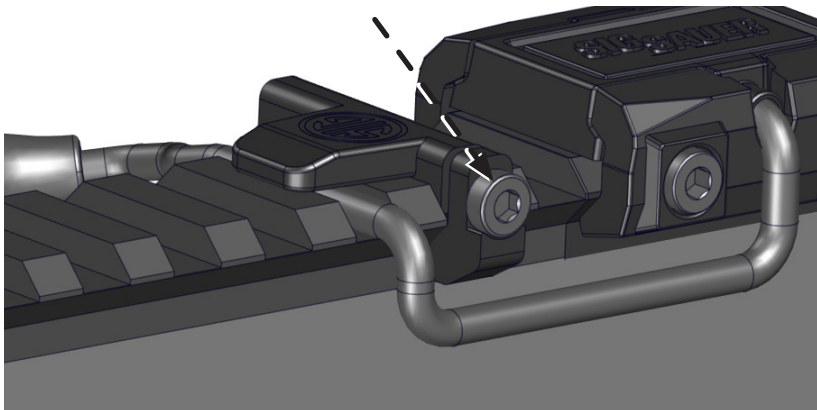


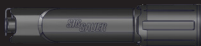
## INSTALLING PICATINNY RAIL CABLE KEEPER

To install the provided cable keeper; Use the provided 2.5mm Allen key to loosen the clamp screw enough to be able to install on a MIL STD 1913 rail. Choose your desired location on your picatinny rail for your cable keeper, then route the tape switch cable through a picatinny rail slot and install the cable keeper so it is covering the cable. Once installed on a MIL STD 1913 rail tighten screw to 20 in-lbs.









## OPERATION

The FOXTROT-MSR can be operated using the remote tape switch or the push button activation on the rear of the flashlight body.

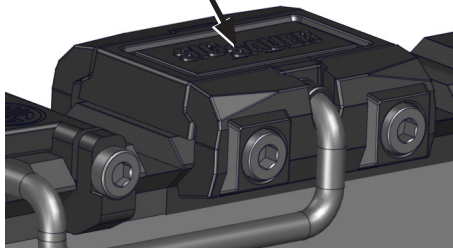
To operate the light using the provided tape switch; press the button to operate light in momentary mode. Once the button is pressed the light will remain ON until the button is released. Once the button is released the light will turn OFF.

To operate the light using the push button activation on the rear of the flashlight; To operate the light in latching mode, press the push button activation switch until you feel a click. The light will now remain ON. To turn the light OFF press the push button activation switch until you feel a click and release the activation switch. To operate the light in momentary mode, slightly press the push button activation switch. To turn the light OFF release the push button activation.

## NOTE

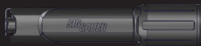
The FOXTROT-MSR will produce its peak brightness output upon initial activation, when using a fresh battery. If left on continuously, the light will get very warm and the brightness will gradually taper down over time, but will continue to produce usable levels of light for up to 1.5 hours in the full size light and up to 1 hour with the compact light, or until a fresh battery is installed.

TAPE SWITCH  
BUTTON



TAIL CAP  
PUSH BUTTON





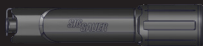
## CLEANING AND MAINTENANCE

After repeated firing, the lens may become clouded with gunpowder residue. For best results, it is recommended that this area be cleaned, along with the firearm, after each use. To clean the lens, follow these steps:

1. Keep firearm pointed in a safe direction.
2. Ensure firearm is unloaded and cleared.
3. Confirm light is off.
4. In a small circular pattern use a soft, degreased, lint-free cloth to clean the lens. Be sure to clean around lens edge.
5. Apply dampened swab to lens and polish in a small circular pattern. Be sure to clean around lens edge.

Firearm should be cleaned and lubricated exactly as directed in your firearm owner's manual. Excess lubrication can interfere with the proper function of both firearm and FOXTROT-MSR White Light. The FOXTROT-MSR should never be submerged or flushed with cleaning solvents.

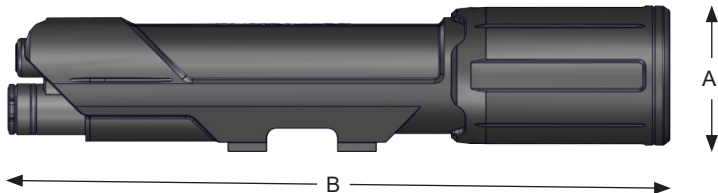
**PAGE INTENTIONALLY LEFT BLANK**



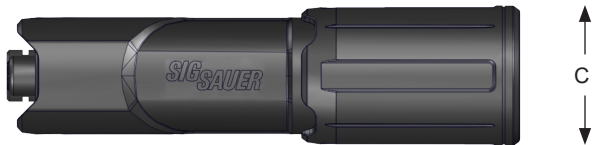
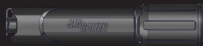
A – 1.18 in

B – 5.6 in

C – 1.18 in



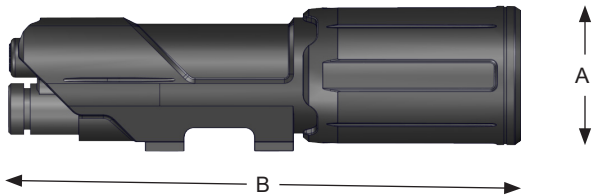
<b>FOXTROT-MSR™ FULL SIZE SPECIFICATIONS</b>	
<b>Dimensions</b>	5.60" L x 1.18" W x 1.18" H
<b>Weight without battery</b>	6.0 oz
<b>Peak Lumen Output</b>	1350
<b>Peak Candela</b>	33,000
<b>Battery</b>	(1) 18650 High-Capacity Li-ion Rechargeable Battery
<b>Activation Switch Type</b>	Momentary Mode, Latching Mode
<b>Water Resistance</b>	IPX7



A – 1.18 in

B – 4.40 in

C – 1.18 in





FOXTROT-MSR™ COMPACT SPECIFICATIONS	
Dimensions	4.40" L x 1.18" W x 1.18" H
Weight without battery	3.6 oz
Peak Lumen Output	1350
Peak Candela	33,000
Battery	(1) 18350 High-Capacity Li-ion Rechargeable Battery
Activation Switch Type	Momentary Mode, Latching Mode
Water Resistance	IPX7



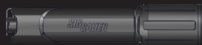
WARNING: CANCER AND REPRODUCTIVE HARM—[www.P65warnings.ca.gov](http://www.P65warnings.ca.gov)



#### RISK GROUP 2

CAUTION: Possibly hazardous optical radiation emitted from this product.  
Do not stare at operating lamp. May be harmful to the eyes.

**NOTICE:** Export restrictions may apply – This product may be controlled either by the ITAR or EAR.



## SIG SAUER ELECTRO-OPTICS INFINITE GUARANTEE®/LIMITED LIFETIME WARRANTY



SIG SAUER® has manufactured the most rugged, dependable, high-performance firearms for more than two centuries. Our heritage of design, engineering, and precision-manufactured quality predates the existence of any other optics company worldwide. We understand the importance of quality in the line of fire, at the shooting range or on your next hunt. SIG SAUER Electro-Optics had to earn the right to wear that badge and the Infinite Guarantee has your back, forever. Period.

We will repair or replace your SIG SAUER product in the event it becomes damaged or defective, at no charge to you. If we cannot repair your product, we will replace it with a product in perfect working order of equal or better physical condition.

### **SIG SAUER® Infinite Guarantee®**

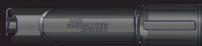
- Unlimited Lifetime Guarantee
- Fully Transferable
- No Warranty Card Required
- No Receipt Required
- No Time Limit Applies
- No Charge

Please note that our Infinite Guarantee excludes coverage for intentional damage, misuse, cosmetic damage that does not affect the performance of the optic, loss, theft, or unauthorized repair or modification. Excludes electronic and Tritium components.

Customers seeking warranty coverage must first obtain a Return Merchandise Authorization (RMA) by contacting SIG SAUER Customer Service, and return the product unloaded and freight prepaid.

ANY WARRANTIES IMPLIED BY LAW, INCLUDING ANY IMPLIED WARRANTIES OF MERCHANTABILITY OR FITNESS FOR A PARTICULAR PURPOSE, ARE EXPRESSLY DISCLAIMED. REPAIR, ALTERATION, OR REPLACEMENT AS PROVIDED HEREIN IS YOUR EXCLUSIVE REMEDY FOR ANY DEFECTIVE PRODUCT. IN NO EVENT SHALL SIG SAUER OR ANY COMPANY AFFILIATED WITH SIG SAUER BE LIABLE FOR ANY SPECIAL, INCIDENTAL, OR CONSEQUENTIAL DAMAGES OF ANY KIND ARISING OUT OF THE PURCHASE OR USE OF THIS PRODUCT, WHETHER BASED UPON CONTRACT, TORT, STATUTE, OR OTHERWISE. Some states do not allow the exclusion or limitation of implied warranties, or the exclusion or limitation of incidental or consequential damages, so some or all of the above limitations or exclusions may not apply to you. This warranty gives you specific legal rights, and you may also have other rights which vary from State to State.

THIS WARRANTY APPLIES TO COMMERCIAL CUSTOMERS ONLY, AND DOES NOT APPLY TO GOVERNMENT, MILITARY, LAW ENFORCEMENT, OR NON-US CUSTOMERS. NON-US COMMERCIAL CUSTOMERS MUST PURCHASE PRODUCT THROUGH AN AUTHORIZED SIG SAUER DEALER WITHIN THEIR COUNTRY OF RESIDENCE FOR THIS WARRANTY TO APPLY.



## SIG SAUER ELECTRONIC COMPONENT LIMITED 5-YEAR WARRANTY



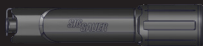
SIG SAUER warrants that the electronic and tritium components of the enclosed product were originally manufactured free of defects in workmanship, material, and mechanical function. For a period of five (5) years from the date of manufacture, SIG SAUER agrees to correct any defect in these components by repair, adjustment, or replacement, at SIG SAUER's option, with the same or comparable quality components (or by replacing the product at SIG SAUER's option); provided however that a Return Merchandise Authorization (RMA) is first obtained by contacting SIG SAUER Customer Service, and that the product is returned unloaded and freight prepaid.

This limited warranty is null and void if the product has been misused, damaged (by accident or otherwise), damaged through failure to provide reasonable and necessary maintenance as described in the user's manual, or if unauthorized repair or any alteration, including of a cosmetic nature, has been performed on the product. This limited warranty does not apply to normal cosmetic wear and tear of any parts.

ANY WARRANTIES IMPLIED BY LAW, INCLUDING ANY IMPLIED WARRANTIES OF MERCHANTABILITY OR FITNESS FOR A PARTICULAR PURPOSE, ARE EXPRESSLY DISCLAIMED. REPAIR, ALTERATION, OR REPLACEMENT AS PROVIDED HEREIN IS YOUR EXCLUSIVE REMEDY FOR ANY DEFECTIVE PRODUCT. IN NO EVENT SHALL SIG SAUER OR ANY COMPANY AFFILIATED WITH SIG SAUER BE LIABLE FOR ANY SPECIAL, INCIDENTAL, OR CONSEQUENTIAL DAMAGES OF ANY KIND ARISING OUT OF THE PURCHASE OR USE OF THIS PRODUCT, WHETHER BASED UPON CONTRACT, TORT, STATUTE, OR OTHERWISE.

Some states do not allow the exclusion or limitation of implied warranties, or the exclusion or limitation of incidental or consequential damages, so some or all of the above limitations or exclusions may not apply to you. This warranty gives you specific legal rights, and you may also have other rights which vary from State to State.

THIS WARRANTY APPLIES TO COMMERCIAL CUSTOMERS ONLY, AND DOES NOT APPLY TO GOVERNMENT, MILITARY, LAW ENFORCEMENT, OR NON-US CUSTOMERS. NON-US COMMERCIAL CUSTOMERS MUST PURCHASE PRODUCT THROUGH AN AUTHORIZED SIG SAUER DEALER WITHIN THEIR COUNTRY OF RESIDENCE FOR THIS WARRANTY TO APPLY.







[sigsauer.com](https://www.sigsauer.com)

**FOR PRODUCT SERVICE ON THIS MODEL, PLEASE CALL 603-610-3000**

**12100 SW Tualatin Rd, Tualatin, OR 97062 USA**

All trademarks, service marks, trade names, trade dress, product names and logos appearing in this manual are the property of their respective owners. No trademark or service mark appearing in this manual may be used without written consent of the mark's owner.