

# **SIG SAUER®**



## ***SIG MCX-SPEAR LT®***

***OPERATOR'S MANUAL: HANDLING & SAFETY INSTRUCTIONS***



READ THE INSTRUCTIONS AND WARNINGS IN THIS MANUAL CAREFULLY BEFORE USING THIS FIREARM.



# WARNINGS



# WARNINGS

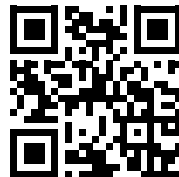
**SIGSAUER**



## WARNING

**BEFORE OPERATING THE FIREARM, REVIEW THE SAFETY WARNINGS MANUAL THAT WAS PROVIDED WITH THE FIREARM. ALTERNATIVELY, REFER TO SIGSAUER.COM FOR THE LATEST SAFETY WARNING INFORMATION.**

For more information, scan the QR code below to visit [sigauer.com](https://sigauer.com).





# WARNINGS

## 1.0 SAFETY WARNINGS

**READ THIS ENTIRE MANUAL THOROUGHLY AND CAREFULLY PRIOR TO USING THIS FIREARM.**

The warnings in this operators manual are extremely important. By understanding the dangers inherent in the use of any firearm, and by taking the precautions described in this manual, you can experience a high level of safety in the use of your firearm. Failure to heed any of these warnings may result in serious injury or death to you or others, as well as severe damage to the firearm or other property.

**WARNINGS** in this manual identify a clear danger to the person performing that procedure. Warnings are identified by a red banner with the word **WARNING** in white, bold, uppercase letters and a **WARNING** icon. Failure to comply with a **WARNING** can result in serious injury or death to you or a bystander.



**WARNING**

**CAUTIONS** in this manual identify a risk of damage to the firearm being maintained. **CAUTIONS** are identified by a black banner with the word **CAUTION** in white, bold, uppercase letters.

**CAUTION**



# WARNINGS

**SIG SAUER**

SIG SAUER, INC.<sup>®</sup> firearms are designed to function reliably with proper care and knowledgeable use. Operators must understand the safe operation and use of any SIG SAUER firearm. Read and follow these instructions carefully. Do not use the firearm without understanding the instructions outlined in this manual and the safe operation of the firearm. **Failure to follow the instructions outlined in this manual may result in serious injury or death to the operator and/or others. Damage to the firearm and other property may also occur.**



# WARNINGS

## 2.0 HANDLING

Your firearm comes equipped with effective, well-designed safety features. However, never rely completely on any safety mechanism. Safety mechanisms are designed to augment, not replace, safe handling practices. Careless and improper handling of any firearm can result in an unintentional discharge.

Proper and applied training in safe firearm handling will ensure the safe use of your firearm. Like all mechanical devices, the safety mechanisms are subject to breakage or malfunction and can be negatively affected by wear, abuse, dirt, corrosion, incorrect assembly, improper adjustment or repair, or lack of maintenance. Moreover, there is no such thing as a safety mechanism that is “childproof” or that can completely prevent accidental discharge from improper usage, carelessness, “horseplay,” or abusive handling.

Always handle your firearm as though you expect the safeties not to work.

### **THE MOST EFFECTIVE SAFETY IS TO CARRY FIREARM WITHOUT A ROUND IN THE CHAMBER, AND TO LOAD A ROUND IN THE CHAMBER ONLY WHEN READY TO FIRE.**

Do not load a cartridge into the chamber until you are ready to use the firearm. Keep the firearm on SAFE until you are actually ready to use the firearm. Always move the selector fully to its engaged position and visually check it. The selector is not on SAFE unless it is completely on SAFE.



# WARNINGS

## 2.1 BASIC RULES OF SAFE FIREARMS HANDLING

- ALWAYS treat every firearm as if it were loaded.
- ONLY load a round in the chamber when ready to fire.
- NEVER pull the trigger or place fingers on the trigger or in the trigger guard until ready to fire.
- NEVER allow clothing or other foreign objects to interfere or come in contact with the trigger.
- ALWAYS be sure the barrel is clear of any obstruction.
- ALWAYS be aware of the surroundings, and the safety of bystanders before shooting. Know the target and what is in front of and beyond it.
- ALWAYS use clean, dry, original factory-made ammunition of the proper type and caliber for the firearm.
- ALWAYS wear ear protection and safety glasses when shooting.
- ALWAYS carry a firearm so that control of the muzzle can be maintained in the event of a fall or stumble.
- NEVER shoot at a flat surface or water.
- DO NOT leave a loaded firearm unattended. Only store a firearm that is unloaded, cleared of all ammunition, and locked in a secure place inaccessible to children or unauthorized persons.
- NEVER allow the firearm to be used by anyone who has not read and understood the Operator's Manual.
- ALWAYS unload and clear a firearm according to the instructions in the Operator's Manual before handing it to another person.
- DO NOT point any firearm, loaded or unloaded, at any undesignated or unsafe target.



# WARNINGS

- NEVER discharge a firearm near an animal unless the animal is trained to accept the noise. An animal's startled reaction could injure it or cause an accident.
- NEVER drink alcoholic beverages or use drugs before or during shooting, as vision and judgment could be seriously impaired, making firearm handling unsafe.
- ALWAYS seek a doctor's advice before using a firearm if using medication that would impair judgment or usage.



# WARNINGS

**SIG SAUER**

## 2.2 ABUSIVE HANDLING

SIG SAUER firearms incorporate effective mechanical safeties. However, like any mechanical device, exposure to abusive conditions may harm these safety mechanisms and cause them to fail to work as designed. Do not subject the SIG SAUER firearm to any abusive handling. This includes the firearm being dropped, impact to the firearm, or the firearm being struck by another object. Always maintain control of the firearm. If the firearm suffers an abusive event such as previously described, or experiences a malfunction, do not attempt to use the firearm. Keep the firearm pointed in a safe direction, unload and clear the firearm of all ammunition immediately, and have it inspected by a certified SIG SAUER armorer before using the firearm.

ALWAYS keep the firearm pointed in a safe direction. A safe direction is defined as an area where, if the firearm were to discharge, no property damage would occur, and no personal injury would result.

As previously noted, if the SIG SAUER firearm suffers an abusive event, unload it immediately and have it inspected by a certified SIG SAUER Armorer prior to using the firearm. If the firearm suffers an abusive event during a life-threatening/self-defense situation, follow the steps below immediately:

1. Pull the charging handle entirely rearward to eject the chambered cartridge.
2. Return the charging handle forward to chamber a new cartridge and reset the hammer.
3. The firearm should now be returned to proper operational condition.

Intentional or repetitive abusive handling of any SIG SAUER firearm will void the manufacturer's warranty and could render the firearm unsafe.



# WARNINGS

## 3.0 ALTERATIONS AND REPLACEMENT PARTS

**Do not attempt to disassemble a SIG SAUER firearm beyond the point explained in the Operator's Manual. Disassembly beyond the instructions in the Operator's Manual is restricted to a certified SIG SAUER Armorer. Failure to comply with these restrictions will void the warranty.**

This SIG SAUER firearm was designed to function properly in its original condition. Unauthorized alterations can make it unsafe. The use of unauthorized replacement parts, in some instances, could alter the function of the firearm. Warnings and instructions about the use of SIG SAUER replacement parts, assemblies, and accessories may be described in instructions accompanying the specific products. Read and carefully follow those instructions. Failure to comply may result in serious injury or death to the operator and/or others.

### 3.1 ACCESSORIES

It is the responsibility of the operator to ensure all accessories are compatible with the firearm and do not interfere with the safe operation and handling of the firearm.



# WARNINGS

**SIG SAUER**

## 3.2 TRANSPORTING

When transporting a firearm, be sure the firearm is unloaded and cleared of all ammunition. It is the responsibility of the operator to know the laws of different states and jurisdictions when traveling with a firearm.

### 3.3 STORAGE

Safe and secure storage is an important responsibility. The only safe way to store a firearm is unloaded, cleared of all ammunition, and locked in a secure place inaccessible to children or unauthorized persons.

### 3.4 CHAMBER SAFETY FLAG

Every SIG SAUER firearm is shipped with a chamber safety flag. When installed, the chamber safety flag prevents the chambering of a round and provides a readily visible indication that the firearm's chamber is empty. The chamber safety flag is to be placed in the firearm's chamber at all times when the firearm is not in use. Many public ranges require chamber safety flags be installed when the firing line is cold.



# WARNINGS

## 3.5 LIABILITY

This product is classified as a FIREARM and is sold by SIG SAUER with the specific understanding that we shall not be responsible in any manner whatsoever for malfunctioning of the firearm, physical injury, or property damage resulting in whole or in part from:

- Criminal or negligent discharge
- Improper, careless, or abusive handling
- Unauthorized modifications or parts replacement
- Defective, improper, hand-loaded, or reloaded ammunition
- Corrosion
- Neglect
- Other influences beyond our direct and immediate control

This limitation applies regardless of whether liability is asserted on the basis of contract, negligence, or strict liability (including any failure to warn). Under no circumstance shall SIG SAUER, Inc. be liable for incidental or consequential damages such as loss of use of property, commercial loss, and loss of earnings or profits.



# WARNINGS

**SIG SAUER**

## 4.0 EYE AND EAR PROTECTION



Always wear safety glasses that meet the requirements of American National Standards Institute (ANSI) z87.1 or European Standard (EN)166:2001 and ear plugs and “ earmuff ” type protectors whenever shooting. Always make certain that persons close are similarly protected. Unprotected eyes may be injured by powder, gas, carbon residue, lubricant, metallic particles, or similar debris that may emanate occasionally from any firearm in normal use. Without ear protection, repeated exposure to shooting noise may lead to cumulative, permanent hearing loss.



# WARNINGS

## 5.0 AMMUNITION

Use only high-quality, original, factory-manufactured ammunition. Do not use cartridges that are dirty, wet, corroded, bent, or damaged. A damaged or deformed cartridge may impede chambering or cause the cartridge case to burst upon firing. Do not oil cartridges. Lubricant or other foreign matter on cartridges can potentially cause dangerous ammunition malfunctions. Some highly penetrative lubricants can also migrate inside cartridge cases and cause deterioration of the propellant powder; on firing, the powder might not ignite. If only the primer ignites, there is danger that the bullet may become lodged in the barrel. Only use ammunition of the caliber for which the firearm is chambered.

The proper caliber is permanently engraved on the firearm's barrel.



# WARNINGS



The use of reloaded, hand-loaded (re-manufactured), or other nonstandard ammunition voids all warranties. Reloading is a science, and improperly loaded ammunition can cause severe damage to the firearm and may result in serious injury or death to the operator and/or others.

Always use ammunition that complies with the industry performance standards established by the Sporting Arms and Ammunition Manufacturers' Institute, Inc. (SAAMI) or ammunition manufactured to U.S. military specifications.

**SIG SAUER specifically disclaims responsibility for any damage or injury whatsoever occurring in connection with, or as a result of, the use in any SIG SAUER firearm of faulty, nonstandard, hand-loaded (reloaded) ammunition, or cartridges other than those for which the firearm was originally chambered. Excessive pressure inside the chamber or barrel while firing a firearm may cause severe damage and serious injury or death to the shooter or to others may occur.**



WARNING: CANCER AND REPRODUCTIVE HARM—[www.P65warnings.ca.gov](http://www.P65warnings.ca.gov)



DISCHARGING FIREARMS IN POORLY VENTILATED AREAS, CLEANING FIREARMS, OR HANDLING AMMUNITION MAY RESULT IN EXPOSURE TO LEAD AND OTHER SUBSTANCES KNOWN TO THE STATE OF CALIFORNIA TO CAUSE BIRTH DEFECTS, REPRODUCTIVE HARM, AND OTHER SERIOUS PHYSICAL INJURY. MAINTAIN ADEQUATE VENTILATION AT ALL TIMES. WASH HANDS THOROUGHLY AFTER EXPOSURE. SHOOTING OR CLEANING FIREARMS MAY EXPOSE OPERATORS TO LEAD.



# WARNINGS

**SIG SAUER**

## 6.0 LOCKING DEVICES



All SIG SAUER firearms are shipped with a key-operated locking device or a lockable case.

Never install the locking device inside the trigger guard or in any way that makes it possible to pull the trigger. Do not leave the keys in the lock.

All firearm owners are responsible for secure storage of any firearm.

ALWAYS refer to the locking device's manufacturer directions for installation and removal of the device.

## 7.0 SAFETY INFORMATION

This operator's manual is designed to assist you in learning how to use and care for your SIG SAUER® firearm properly.

Only when you are certain that you fully understand this manual and can properly carry out its instructions should you practice loading and firing your firearm with live ammunition. Having a firearm in your possession is a full-time job; you cannot guess and you cannot forget. You must know how to use your firearm safely.

If you have any doubts about your ability to handle or use this firearm safely, you should seek supervised instruction.

The SIG SAUER Academy provides all levels of firearms safety and skill training, from beginner to expert.

For more information contact:

**SIG SAUER**  
ACADEMY

sigsaueracademy.com • (603) 610-3400  
Epping, New Hampshire

**SAFETY MUST BE THE FIRST AND CONSTANT CONSIDERATION OF EVERY PERSON WHO HANDLES FIREARMS AND AMMUNITION.**

For more information about safety, responsible firearms ownership, and shooting sports, contact:  
National Rifle Association (NRA) of America  
11250 Waples Mill Road, Fairfax, VA 22030-7400 • 1-800-672-3888  
nra.com



## Contents

1.0 SAFETY WARNINGS . . . . .	4
2.0 HANDLING . . . . .	6
2.1 BASIC RULES OF SAFE FIREARMS HANDLING . . . . .	7
2.2 ABUSIVE HANDLING . . . . .	9
3.0 ALTERATIONS AND REPLACEMENT PARTS . . . . .	10
3.1 ACCESSORIES . . . . .	10
3.2 TRANSPORTING . . . . .	11
3.3 STORAGE . . . . .	11
3.4 CHAMBER SAFETY FLAG . . . . .	11
3.5 LIABILITY . . . . .	12
4.0 EYE AND EAR PROTECTION . . . . .	13
5.0 AMMUNITION . . . . .	14
6.0 LOCKING DEVICES . . . . .	16
7.0 SAFETY INFORMATION . . . . .	17
8.0 MECHANICAL CHARACTERISTICS AND RIFLE THEORY . . . . .	22
8.1 RIFLE DESCRIPTION . . . . .	22
8.2 CONTROLS AND FEATURES . . . . .	23
8.3 GROUPS AND ASSEMBLIES . . . . .	25
8.3.1 UPPER RECEIVER GROUP . . . . .	25
8.3.2 LOWER RECEIVER GROUP . . . . .	29
8.4 CYCLE OF FUNCTION . . . . .	30
9.0 OPERATING THE SIG MCX-SPEAR LT . . . . .	32
9.1 PREPARATION BEFORE USING THE FIREARM . . . . .	32
9.2 SAFETY SELECTOR . . . . .	33
9.3 UNLOAD AND CLEAR THE RIFLE . . . . .	34

9.4 TWO-POSITION GAS VALVE . . . . .	38
9.5 ADVERSE/SPECIAL ENVIRONMENTAL CONDITIONS . . . . .	40
9.6 FOLDING STOCK . . . . .	42
9.7 LOADING/RELOADING . . . . .	44
9.7.1 LOADING THE MAGAZINE . . . . .	44
9.7.2 LOADING RIFLE (BOLT LOCKED TO THE REAR) . . . . .	45
9.7.3 LOADING RIFLE (BOLT FORWARD) . . . . .	46
9.7.4 RELOADING RIFLE (EXPENDED MAGAZINE, BOLT LOCKED TO THE REAR) . . . . .	46
9.7.5 RELOADING RIFLE (PARTIAL MAGAZINE, BOLT FORWARD, ROUND CHAMBERED) . . . . .	47
9.8 FIRING . . . . .	48
10.0 OPERATOR LEVEL AUTHORIZED PREVENTIVE MAINTENANCE . . . . .	49
10.1 FIELD STRIP THE SIG MCX-SPEAR LT . . . . .	49
11.0 CLEANING AND LUBRICATION . . . . .	59
11.1 CLEANING . . . . .	60
11.1.1 CLEANING THE BORE AND CHAMBER . . . . .	60
11.1.2 CLEANING THE OPERATING SYSTEM . . . . .	64
11.2 LUBRICATION . . . . .	66
11.2.1 OPERATING GROUP AND GAS BLOCK . . . . .	66
11.2.2 UPPER RECEIVER . . . . .	68
11.2.3 LOWER RECEIVER . . . . .	69
12.0 ASSEMBLY . . . . .	70
13.0 FUNCTION CHECK . . . . .	78
14.0 MAGAZINE MAINTENANCE . . . . .	81
14.1 DISASSEMBLE MAGAZINE . . . . .	81
14.2 CLEANING . . . . .	83



14.3 ASSEMBLY . . . . .	83
15.0 HANDGUARD . . . . .	85
15.1 HANDGUARD REMOVAL . . . . .	85
15.2 HANDGUARD INSTALLATION . . . . .	88
16.0 SUPPRESSOR COMPLIANT HANDGUARD . . . . .	90
17.0 GAS VALVE AND PISTON . . . . .	93
17.1 GAS VALVE AND PISTON REMOVAL . . . . .	93
17.2 GAS VALVE AND PISTON INSTALLATION . . . . .	95
17.3 GAS VALVE CALIBER VARIATIONS . . . . .	97
18.0 BARREL . . . . .	98
18.1 BARREL REMOVAL . . . . .	98
18.2 BARREL INSTALLATION . . . . .	100
19.0 FOLDING STOCK . . . . .	103
19.1 FOLDING STOCK REMOVAL . . . . .	103
19.2 FOLDING STOCK INSTALLATION . . . . .	105
19.3 CHEEK REST REMOVAL . . . . .	106
19.4 CHEEK REST INSTALLATION . . . . .	108
20.0 TROUBLESHOOTING GUIDE . . . . .	110
20.1 OBSTRUCTED BORE . . . . .	111
20.2 COOK-OFF . . . . .	112
20.3 GENERAL STOPPAGES . . . . .	113
20.4 MINIMIZING STOPPAGES . . . . .	115
21.0 STORAGE AND TRANSPORTATION . . . . .	116
21.1 SHORT TERM STORAGE (90 DAYS OR LESS) . . . . .	116
21.2 LONG TERM STORAGE (90 DAYS OR LONGER) . . . . .	116

21.3 ENVIRONMENTAL STORAGE RECOMMENDATIONS (ARMORY) . . . . .	117
21.4 TRANSPORTATION . . . . .	117
22.0 SIG MCX-SPEAR LT PARTS DIAGRAMS . . . . .	118
22.1 RIFLE PARTS DIAGRAM . . . . .	118
22.2 OPERATING GROUP PARTS DIAGRAM . . . . .	119
22.3 BARREL ASSEMBLY—5.56 NATO, 16-INCH BARREL (OTHER MODELS VARY) . . . . .	120
23.0 REPLACEMENT PARTS POLICY . . . . .	122
24.0 FACTORY REPAIR OF THE FIREARM . . . . .	124
24.1 RETURNING FIREARMS FOR REPAIR . . . . .	125
SIG SAUER INFINITE GUARANTEE™ . . . . .	126



## 8.0 MECHANICAL CHARACTERISTICS AND RIFLE THEORY

### 8.1 RIFLE DESCRIPTION

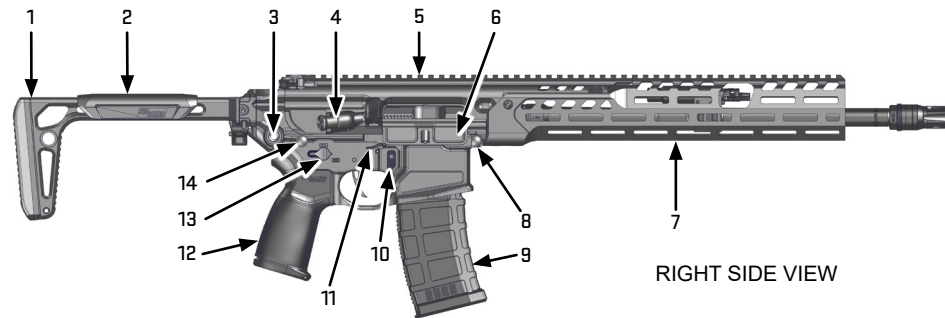
The SIG MCX-SPEAR LT is a magazine-fed, gas-operated rifle available in 5.56x45 mm NATO, 7.62x35 mm (.300 AAC Blackout), and 7.62x39 mm calibers. The SIG MCX-SPEAR LT fires from a rotating locking closed bolt. The SIG MCX-SPEAR LT is available in semi-automatic and select fire rifle variants, as well as a pistol version. The short stroke piston operating system enables optimum function under adverse conditions.

The MCX-SPEAR LT is fitted with an aluminum handguard which provides a MIL-STD 1913 rail at the 12 o'clock position. There are multiple M-LOK™ mounting interfaces for accessories at the 3, 6, and 9 o'clock positions and has several sling attachment points. SIG offers the MCX-SPEAR LT with a lightweight folding stock and the MCX-SPEAR LT pistol variants.

Scan the QR code to visit sigsauer.com. There you will find additional information about SIG SAUER products, SIG SAUER Academy and Experience Center, special programs, and additional support.



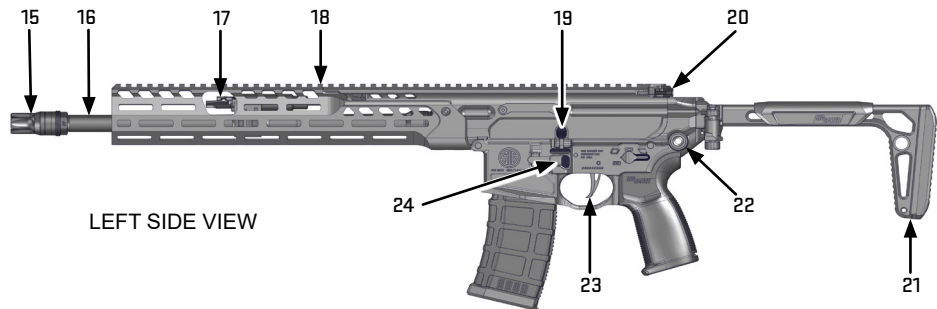
## 8.2 CONTROLS AND FEATURES



RIGHT SIDE VIEW

NUMBER	NOMENCLATURE
1	Buttstock
2	Cheek Rest
3	QD Sling Cup
4	Forward Assist
5	Upper Receiver
6	Ejection Port Cover
7	M-LOK Handguard

NUMBER	NOMENCLATURE
8	Pivot Pin
9	Magazine
10	Ambidextrous Magazine Catch
11	Ambidextrous Bolt Catch
12	Grip
13	Ambidextrous Selector
14	Takedown Pin



LEFT SIDE VIEW

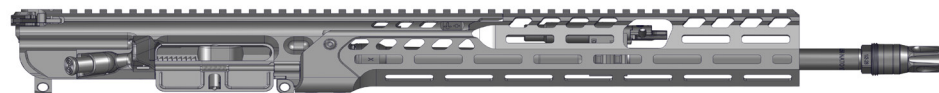
NUMBER	NOMENCLATURE
15	Muzzle Device
16	Barrel
17	Gas Valve
18	MIL-STD 1913 Rail
19	Ambidextrous Bolt Catch

NUMBER	NOMENCLATURE
20	Ambidextrous Charging Handle Assembly
21	Buttstock
22	QD Sling Cup
23	Trigger
24	Ambidextrous Magazine Catch

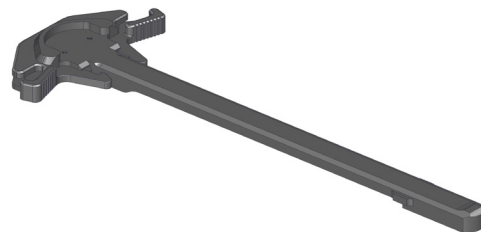
### 8.3 GROUPS AND ASSEMBLIES

#### 8.3.1 UPPER RECEIVER GROUP

The upper receiver group consists of the following:



A. Ambidextrous Charging Handle Assembly





### B. Operating Group

The SIG MCX-SPEAR LT uses a unique operating system that eliminates the traditional buffer and receiver extension found in M16/M4 platforms. This allows for the use of folding and collapsible stocks.



### C. Barrel Assembly

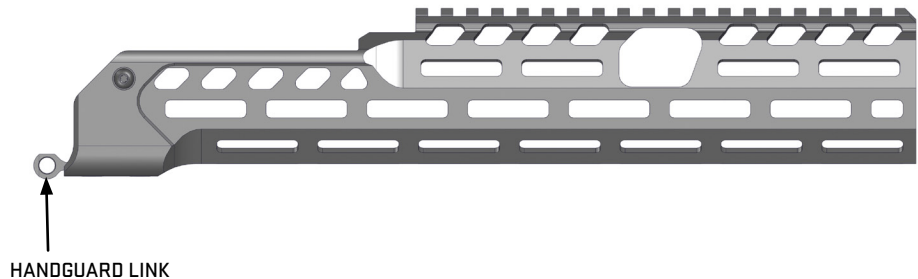
The SIG MCX-SPEAR LT barrel assembly includes the barrel extension, barrel, gas block, gas valve, gas piston, and the flash hider base. The image below depicts a 16-inch 5.56 NATO barrel assembly. Other calibers and configurations may have parts that are different in appearance.





#### D. Handguard Assembly

The SIG MCX-SPEAR LT handguard assembly is composed of the handguard and the handguard link. The handguard features multiple M-LOK points for mounting M-LOK accessories.



#### 8.3.2 LOWER RECEIVER GROUP

The lower receiver group consists of the following assemblies: lower receiver assembly with fire control components, buttstock assembly, cheek rest, and grip assembly.





## 8.4 CYCLE OF FUNCTION

There are eight steps in the cycle of function of the SIG MCX-SPEAR LT that begin after a loaded magazine is inserted into the firearm.

### FEEDING

As the bolt carrier is released from its rearward position, the operating group moves forward allowing the lower lugs of the bolt to make contact with the rear of the cartridge as it sits in the magazine. The cartridge is stripped from the magazine and begins forward movement toward the chamber.

### CHAMBERING

As the bolt moves forward, the bolt locking lugs move forward into the barrel extension. The ejector is compressed against the left side of the cartridge head. The extractor snaps over the rim of the cartridge case.

### LOCKING

The movement of the bolt and the cartridge is stopped by the chamber. The bolt carrier continues forward movement until it is stopped by contact with the rear face of the barrel extension. As the carrier goes through the last portion of movement, the bolt is rotated to the left, through the action of the cam pin. The bolt lugs engage the barrel extension lugs to lock the bolt into the barrel extension.

### FIRING

The selector is rotated to the Semi position. The trigger is pressed releasing the hammer. The hammer spring drives the hammer forward unlocking the firing pin. The firing pin strikes the cartridge primer, causing detonation.

### UNLOCKING

As the bullet passes the gas port in the barrel, a small amount of gas is bled off, traveling up through the gas port and into the gas block. The gas is regulated by the gas valve and is based on the type of ammunition being fired. This gas acts upon the piston to move the recoil assembly to the rear. The recoil assembly transfers its energy to the carrier assembly setting it in motion. The rearward movement of the carrier causes the bolt cam pin to rotate the bolt to the unlocked position.

### EXTRACTION

As the bolt carrier assembly moves rearward the spent case is pulled free from the chamber by the extractor.

### EJECTION

The extractor continues to grip the rim of the spent case on the right side. The ejector is applying forward pressure to the left side of the case. As the expended case clears the chamber, then the barrel extension, it is flipped out through the ejector port on the right side of the receiver.

### COCKING

The rearward movement of the bolt carrier overrides the hammer, forcing it down into the receiver and compressing the hammer spring, cocking the hammer into the firing position.



## 9.0 OPERATING THE SIG MCX-SPEAR LT

### 9.1 PREPARATION BEFORE USING THE FIREARM



#### WARNING



**PRIOR TO PERFORMING ANY MAINTENANCE ON THE FIREARM, READ AND UNDERSTAND THE OPERATOR'S MANUAL. ENSURE THAT THE FIREARM IS UNLOADED, CLEARED, AND THE MAGAZINE IS REMOVED. SAFETY GLASSES SHOULD BE WORN WHENEVER DISASSEMBLING, CLEANING, INSPECTING, OR ASSEMBLING A FIREARM. FAILURE TO COMPLY MAY RESULT IN SERIOUS INJURY OR DEATH TO THE USER OR BYSTANDERS.**

Prior to using the firearm, the operator must read, understand, and follow all safety warnings in the Safety Warnings Manual included with the firearm.

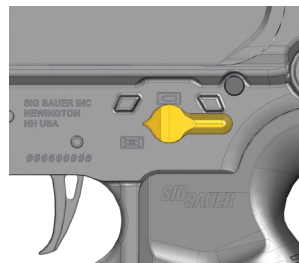
- Field strip the firearm. See 10.1 *Field Strip the SIG MCX-SPEAR LT on page 49.*
- Clean any fouling that might have occurred during factory testing. See 11.1 *Cleaning on page 60.*
- Inspect, lubricate, and reassemble the firearm. See 12.0 *Assembly on page 70.*
- After reassembly and prior to firing the rifle, conduct a function check. See 13.0 *Function Check on page 78.*

Any maintenance beyond the user level described in this manual must be performed by a certified SIG SAUER Armorer specifically trained on the maintenance of the MCX-SPEAR LT.

### 9.2 SAFETY SELECTOR

The SIG MCX-SPEAR LT features an ambidextrous safety selector. Rotating either safety selector 90 degrees changes the firing mode.

- The SAFE position prevents the firearm from firing by blocking the action of the trigger. The safety selector can only be rotated to SAFE when the hammer is cocked.
- The SEMI position is for the semi-automatic mode and allows the firing of one round each time the trigger is pressed rearward.
- AUTO, if equipped, allows for a continuous rate of fire until the trigger is released by the operator or the magazine is depleted of ammunition.



SAFE



SEMI



AUTO



### 9.3 UNLOAD AND CLEAR THE RIFLE



#### **WARNING UNLOAD/CLEAR**

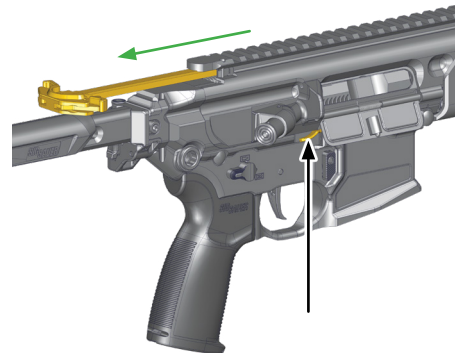
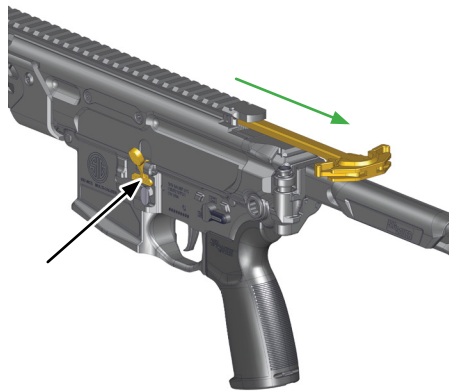


**FAILURE TO ENSURE THE FIREARM IS UNLOADED AND CLEARED COULD RESULT IN UNINTENTIONAL DISCHARGE, CAUSING SERIOUS INJURY, DEATH, OR PROPERTY DAMAGE. REMOVING THE MAGAZINE FROM THE FIREARM DOES NOT PREVENT A CHAMBERED ROUND FROM BEING FIRED.**

1. Ensure the safety selector lever is rotated to **SAFE** and the muzzle of the rifle is pointed in a safe direction at all times while unloading and clearing the firearm.
2. Press the magazine catch on either side to remove the magazine from the rifle.



3. Fully retract the charging handle and lock the operating group to the rear by either:
  - a. Pressing and holding the lower section of the bolt catch lever on the left side.
  - b. Pressing up on the right side of the bolt catch lever.





4. Watch the ejection port on the right side for the ejection of a cartridge case or a live cartridge.

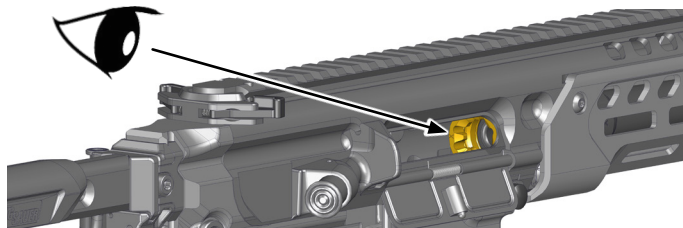


5. Ensure the operating group remains locked to the rear and return the charging handle to its forward and locked position.

**WARNING INSPECTION**

**THE OPERATING GROUP IS UNDER SPRING TENSION AND WILL SPRING FORWARD IF THE BOLT CATCH IS PRESSED. WHILE THE BOLT CATCH IS LOCKED IN PLACE. DO NOT ALLOW THE BOLT CATCH TO BE RELEASED WHILE INSPECTING THE RIFLE. AFTER FIRING, THE CHAMBER OF THE RIFLE COULD POTENTIALLY BE HOT. WHEN PHYSICALLY INSPECTING THE CHAMBER, USE A PEN OR SIMILAR OBJECT IF THE CHAMBER IS HOT. FAILURE TO COMPLY MAY RESULT IN INJURY.**

6. Visually and physically inspect the chamber, bolt face, and magazine well to ensure that the rifle is clear of live rounds, spent cartridges, and debris.
7. If passing the rifle to another person, ensure the safety selector lever is on SAFE and the bolt is locked to the rear. Allow them to inspect the chamber before handing over the firearm.



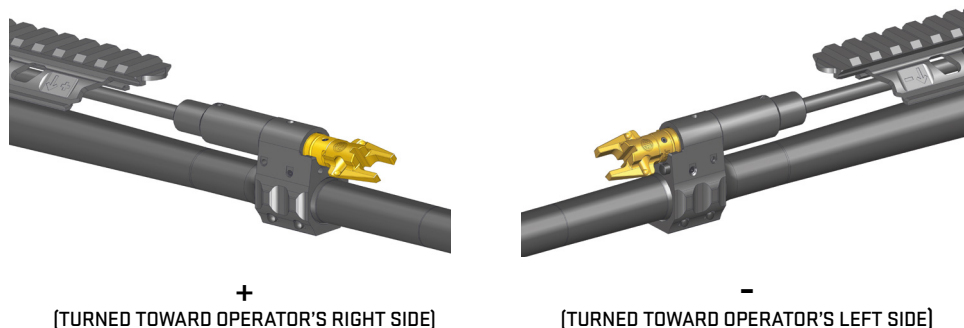


## 9.4 TWO-POSITION GAS VALVE

The SIG MCX-SPEAR LT is equipped with a two-position gas valve. This assembly regulates the rifle's cycling by metering the amount of gas directed to the operating system. The valve provides settings for normal and adverse or suppressed and unsuppressed depending on caliber as indicated in the table on the following page. The adjustment is made by rotating the lever either to the left or right.

### NOTE

.300 BLK MODELS ARE NOT DESIGNED TO FUNCTION RELIABLY WITH SUB-SONIC AMMUNITION WHEN FIRED WITHOUT A SUPPRESSOR. IT IS POSSIBLE FOR SOME MODELS TO FUNCTION WITH SUB-SONIC AMMUNITION, HOWEVER THE POTENTIAL FOR STOPPAGES IN THE CYCLE OF OPERATION IS SIGNIFICANTLY INCREASED. FIRING THE RIFLE WITH THE GAS VALVE IN THE (+) POSITION WILL NOT GUARANTEE RELIABLE FUNCTION. THIS SETTING MAY INCREASE THE BOLT CARRIER SPEED RESULTING IN REDUCED PARTS LIFE, FAILURES TO FEED, AND FAILURES TO EJECT.



GAS VALVE SETTINGS: 5.56 NATO AND 7.62X39MM	
+ SETTING (RIGHT SIDE DOWN)	- SETTING (LEFT SIDE DOWN)
ADVERSE CONDITIONS AND LOW FUNCTION AMMUNITION	STANDARD AMMUNITION SUPPRESSED AND UNSUPPRESSED
GAS VALVE SETTINGS: .300BLK	
SUBSONIC AMMUNITION SUPPRESSED AND ADVERSE CONDITIONS	SUPERSONIC AMMUNITION SUPPRESSED AND UNSUPPRESSED



## 9.5 ADVERSE/SPECIAL ENVIRONMENTAL CONDITIONS

### Arctic (Extreme Cold/Sub Freezing)

- When operating in sub-freezing temperatures, use a lubricant designed for this climate. Do not use CLP in temperatures below -10°F (-23°C) as it can prevent the firearm from firing. Ensure all existing lubricants are thoroughly removed prior to applying cold-weather lubricant.
- Remove O-ring from the extractor spring when in temperatures below -20°F (-29°C).
- Avoid bringing firearm into heated shelters or buildings to prevent condensation from forming on moving parts which will freeze when the firearm is brought back outdoors.
- If you must bring the firearm indoors, allow it to warm to room temperature and then disassemble and clean thoroughly. Ensure that all moisture is removed from the firearm and relubricate the firearm.
- When operating in snowy environments, conduct frequent inspections of the firearm to ensure that snow has not gotten into operating parts. Work the action periodically to ensure that it is not frozen. Use muzzle covers if available.
- If the operating group freezes from snow or moisture, DO NOT discharge the firearm to free the carriage. Warm the firearm using body heat or bring indoors until free movement is restored, and then clean and re-lubricate the firearm.

### Desert (Hot/Dry)

- Apply light lubrication to internal metal-on-metal moving parts only. If available, use dry graphite lubricant.
- Because of blowing dust and sand, increase frequency of inspection and cleaning of firearm. Pay particular attention to the bolt assembly.
- Use muzzle covers if available.
- Unload and clean ammunition and inside of magazines daily. Do not lubricate magazine.
- Cover the firearm and close the ejection port when not in use.

### Jungle (Hot/Humid)

- Inspect and clean the firearm frequently to prevent rust and corrosion.
- Apply a thin coat of lubricant on steel parts frequently.
- Inspect all surfaces of the operating group, upper receiver, chamber, and barrel extension for corrosion.
- Inspect the lower receiver and fire control components for corrosion.
- Inspect and lubricate the spring-loaded detents of the firearm.
- Unload the magazine, clean ammunition, and inspect the inside of magazines daily for corrosion.
- Wipe the ammunition dry before reloading the magazine.



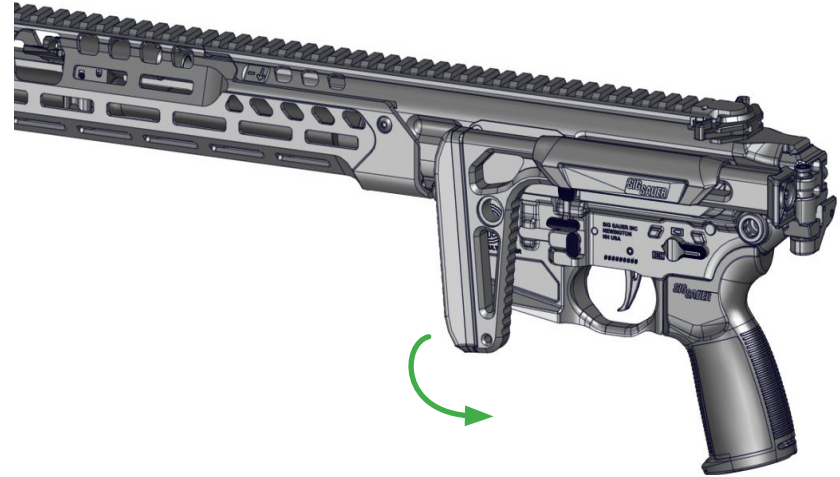
## 9.6 FOLDING STOCK

The MCX-SPEAR LT rifle utilizes a MIL-STD 1913 interface to accommodate multiple stock options. To fold the stock:

- a. Push lock button and lift up on the stock to disengage the locking mechanism and rotate stock.



- b. To deploy the stock, pull the stock outward and rotate until it locks in place.





## 9.7 LOADING/RELOADING

### 9.7.1 LOADING THE MAGAZINE

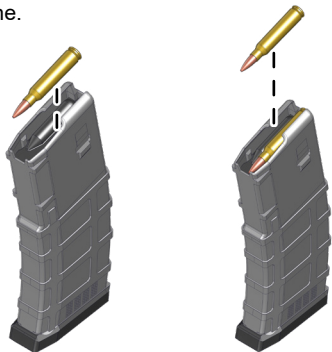
#### CAUTION

ENSURE THE MAGAZINE IS THE PROPER TYPE AND CALIBER FOR THE RIFLE.

#### NOTE

Do not overload the magazine.

1. Place a cartridge between the feed lips and press down. Ensure the projectile is facing the front of the magazine and the cartridge is fully seated to the rear.
2. Place the next cartridge between the previous one and the feed lips then press down.
3. Repeat until the magazine is full or the desired number of rounds has been loaded.



### 9.7.2 LOADING RIFLE (BOLT LOCKED TO THE REAR)



#### WARNING BARREL

**BEFORE LOADING, ALWAYS CLEAN ALL GREASE AND OIL FROM THE BORE AND CHAMBER AND VERIFY THAT NO OBSTRUCTION IS IN THE BARREL. ANY FOREIGN MATTER IN THE BARREL COULD RESULT IN A BULGED OR BURST BARREL OR OTHER DAMAGE TO THE FIREARM AND COULD CAUSE SERIOUS INJURY.**

1. Ensure the safety selector is rotated to SAFE and the muzzle is pointed in a safe direction.
2. Lock the bolt to the rear.
3. Return the charging handle to the forward locked position.
4. Visually and physically inspect the chamber, bolt face, and magazine well to ensure it is clear of ammunition.
5. Insert a loaded magazine until it engages with the magazine catch. There should be a light click. Pull down to ensure the magazine is seated properly.
6. Press the top of the left side bolt catch inward or press down on the right side bolt catch to release the operating group.



#### WARNING LOADED FIREARM



**THE RIFLE IS NOW LOADED AND READY TO FIRE**

7. If the firearm is not to be fired immediately, close the ejection port cover.



### **9.7.3 LOADING RIFLE (BOLT FORWARD)**

1. Ensure the safety selector is rotated to SAFE.
2. Insert a loaded magazine until it engages the magazine catch. There should be a light click. Pull down to ensure the magazine is locked in place.
3. Pull the charging handle completely to the rear.
4. Release the charging handle. Allow it to go forward under full spring pressure. Do not ride the charging handle forward. Failure to do so may cause a stoppage.

### **9.7.4 RELOADING RIFLE (EXPENDED MAGAZINE, BOLT LOCKED TO THE REAR)**

1. Rotate the safety selector lever to SAFE.
2. Press the magazine catch from either the left or right side. The empty magazine should fall from the magazine well.
3. Insert a loaded magazine until it engages the magazine catch. There should be a light click. Pull down to ensure the magazine is locked in place.
4. Press the top of the left side bolt catch inward or press down on the right side bolt catch to release the operating group. The bolt will strip a live cartridge from the magazine and chamber it.

### **9.7.5 RELOADING RIFLE (PARTIAL MAGAZINE, BOLT FORWARD, ROUND CHAMBERED)**

1. Rotate the fire control selector to SAFE.
2. Grasp the magazine with the support hand and press the magazine catch from either the left or right side.
3. Remove the partially loaded magazine.
4. Insert a loaded magazine until it engages the magazine catch. There should be a light click. Pull down to ensure the magazine is seated properly.



## 9.8 FIRING



### **WARNING LOADED FIREARM**



**BEFORE PROCEEDING, REFER TO THE FIRING SECTION OF THE SAFETY WARNINGS MANUAL**

1. Ensure that the safety selector is rotated to **SAFE**.
2. Adjust the buttstock if not already done. *See 9.6 Folding STOCK on page 42.*
3. Keep the rifle aimed at the target or downrange.
4. Follow steps 1 through 6 of 9.7.2 *Loading Rifle (Bolt Locked to the Rear) on page 45.*
5. Rotate the safety selector lever to **FIRE**.
6. Pull the trigger to fire.
7. To fire another round, release the trigger. After the trigger resets, pull to fire again.
8. When finished, place on **SAFE**, and unload and clear the rifle. *See 9.3 Unload and Clear the Rifle on page 34.*

## 10.0 OPERATOR LEVEL AUTHORIZED PREVENTIVE MAINTENANCE

### 10.1 FIELD STRIP THE SIG MCX-SPEAR LT

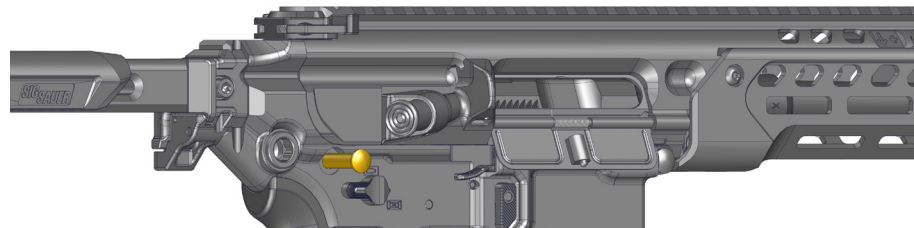


### **WARNING UNLOAD/CLEAR**



**FAILURE TO ENSURE THE FIREARM IS UNLOADED AND CLEARED COULD RESULT IN UNINTENTIONAL DISCHARGE, CAUSING SERIOUS INJURY, DEATH, OR PROPERTY DAMAGE. REMOVING THE MAGAZINE FROM THE FIREARM DOES NOT PREVENT A CHAMBERED ROUND FROM BEING FIRED.**

1. Unload and clear the rifle. *See 9.3 Unload and Clear the Rifle on page 34.*
2. Press either side of the bolt catch to release the operating group forward.
3. Push out the takedown pin from left to right.

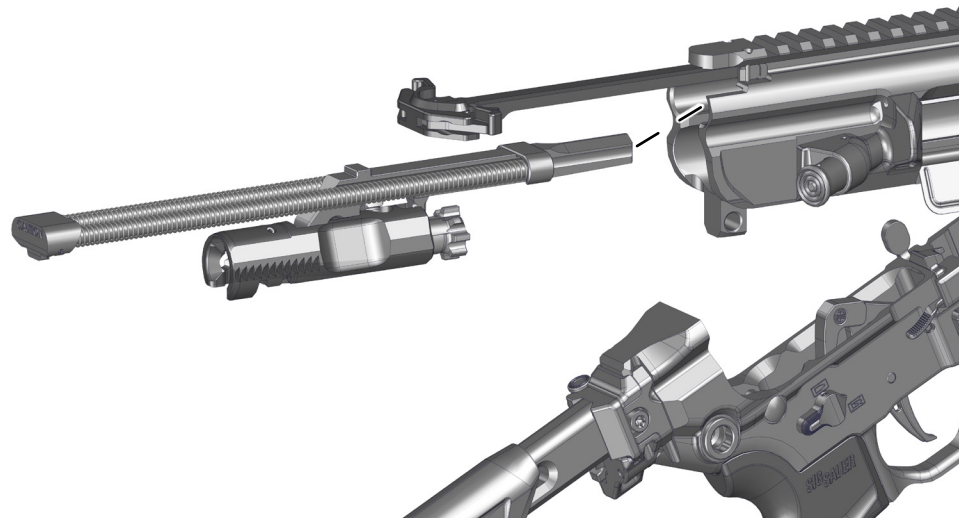




4. Pivot the receivers apart.
5. Pull the charging handle out until it stops.



6. Hold the recoil spring plate and pull the operating group from the upper receiver. It will come out as a complete unit.

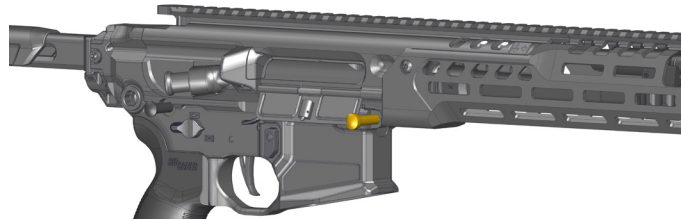




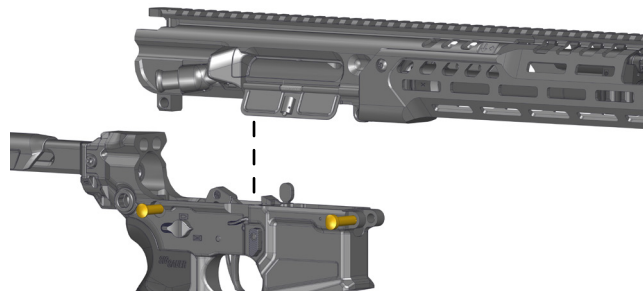
7. Remove the charging handle.



8. Close the receivers and push out the pivot pin from left to right.



9. Separate the receivers.

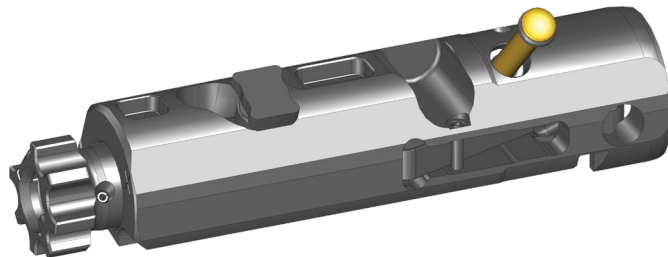




10. Rotate the recoil assembly upward and slide it out from the left side of the bolt carrier.



11. Pull the firing pin retaining pin out until it stops.

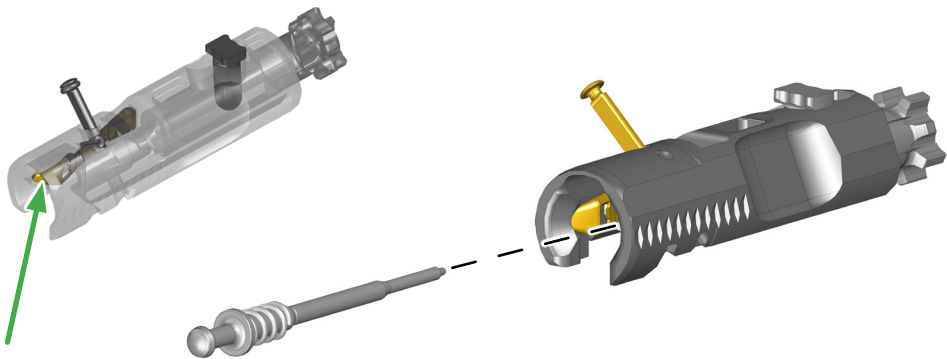




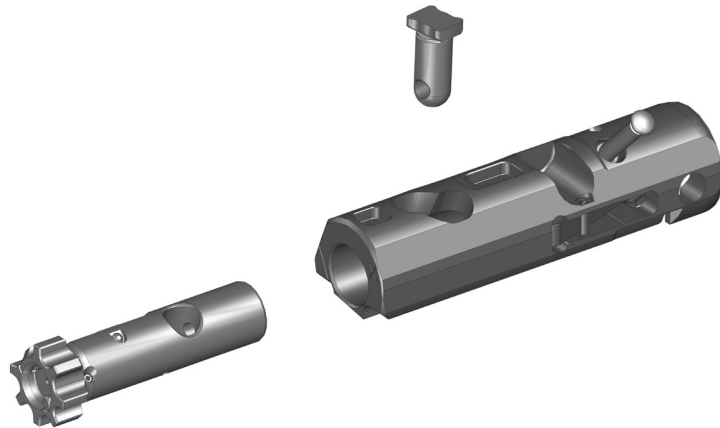
12. Press the firing pin lock outward past the large flange of firing pin. Remove the firing pin and spring out of the carrier.

**NOTE**

Using a 1/16 in pin punch can assist in the removal of the firing pin.



13. Pull the cam pin from the bolt and remove the bolt from the front of the carrier.



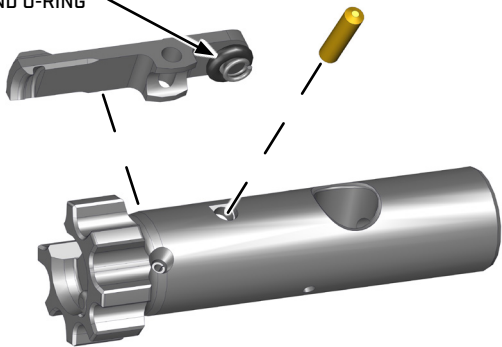


## CAUTION

DO NOT REMOVE SPRING OR INSERT UNLESS DAMAGED. ONLY REMOVE O-RING IF OPERATING BELOW -20°F (-29°C)

15. Push the extractor pin out and remove the extractor from the bolt.

SPRING, INSERT,  
AND O-RING



## 11.0 CLEANING AND LUBRICATION



**WARNING CLEANING**



**READ AND FOLLOW THE MANUFACTURER'S WARNINGS BEFORE USING SOLVENTS OR CLEANERS. USE IN A WELL-VENTILATED AREA. WEAR EYE PROTECTION.**

- Use only cleaning and lubrication products designed for firearms.
- In this manual, the terms CLP (Cleaner, Lubricant, Preservative), lube, or lubricant are interchangeable and can be understood as any lubricant designed for firearms.
- Do not use wire brushes on aluminum surfaces such as the upper and lower receivers. This may damage the finish.
- Follow all manufacturer's instructions and cautions when using cleaning and lubrication products.

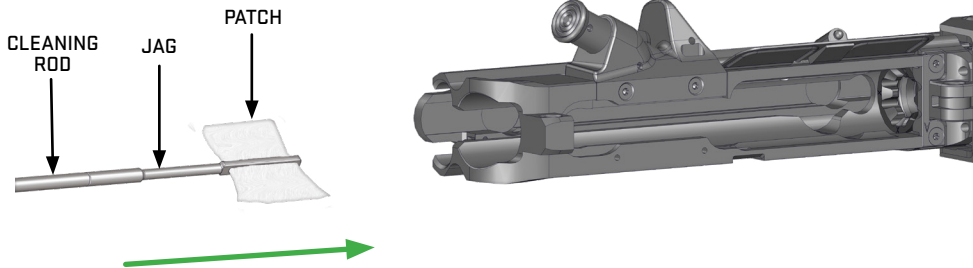


## 11.1 CLEANING

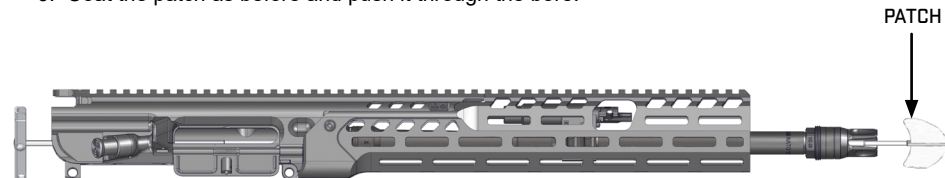
### 11.1.1 CLEANING THE BORE AND CHAMBER

Do not run patches through the bore with a suppressor attached.

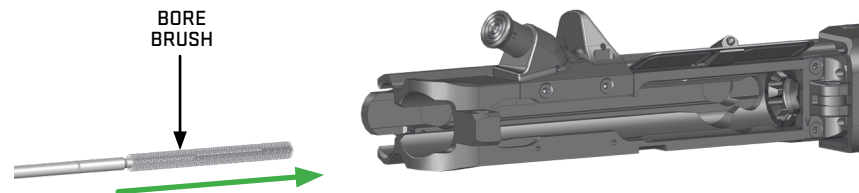
1. Attach a jag to the cleaning rod.
2. Attach a clean patch to the jag.
3. Moisten the patch with CLP and slowly push it through the bore toward the muzzle end.



4. Allow the CLP to stay in the barrel for several minutes to loosen any fouling.
5. Attach a new clean patch to the cleaning rod.
6. Coat the patch as before and push it through the bore.

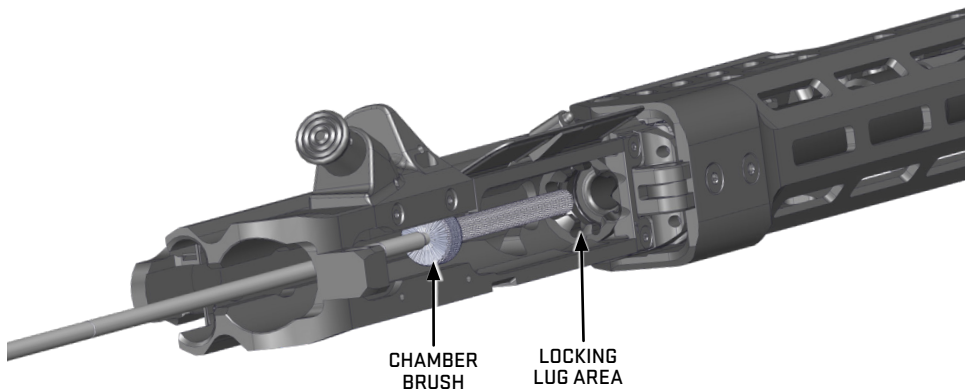


7. If there is heavy fouling, use a bore brush to scrub the bore.





8. Push a patch with CLP through the bore to remove any residue loosened by the bore brush.
9. Push new patches through the bore until they come out clean.
10. Coat a chamber brush with CLP.
11. Keep the muzzle elevated so the CLP does not run into the freshly cleaned bore.
12. Make several plunging strokes followed by several 360-degree rotations in the barrel extension to clean the locking lug area.



**THIS PAGE INTENTIONALLY LEFT BLANK**

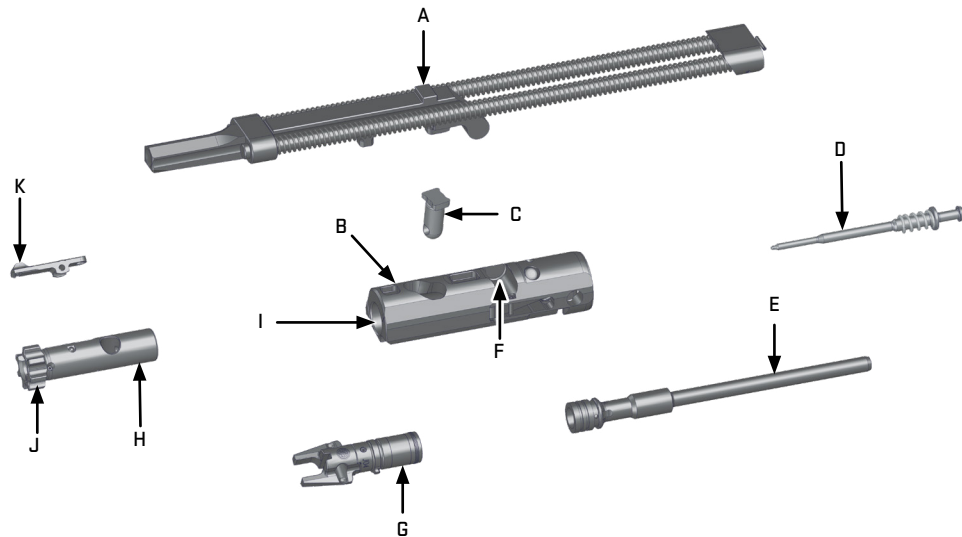


### 11.1.2 CLEANING THE OPERATING SYSTEM

- A. Clean the recoil assembly.
- B. Wipe down the bolt carrier body.
- C. Clean the cam pin of carbon buildup.
- D. Wipe down the firing pin and spring.
- E. Remove carbon buildup from piston.
- F. Clean the recoil assembly interface of the bolt carrier.
- G. Clean and remove carbon and residue from the gas valve.
- H. Clean the bolt body with solvent.
- I. Clean the bolt channel of any carbon buildup.
- J. Clean any carbon from bolt lugs.
- K. Clean the hood and hook of extractor.

#### NOTE

Under normal operating conditions, the MCX-SPEAR LT bolt does not require as much cleaning as an M4 bolt. However, when used with a suppressor attached, the back pressure will produce more residue, which will require more frequent cleaning.





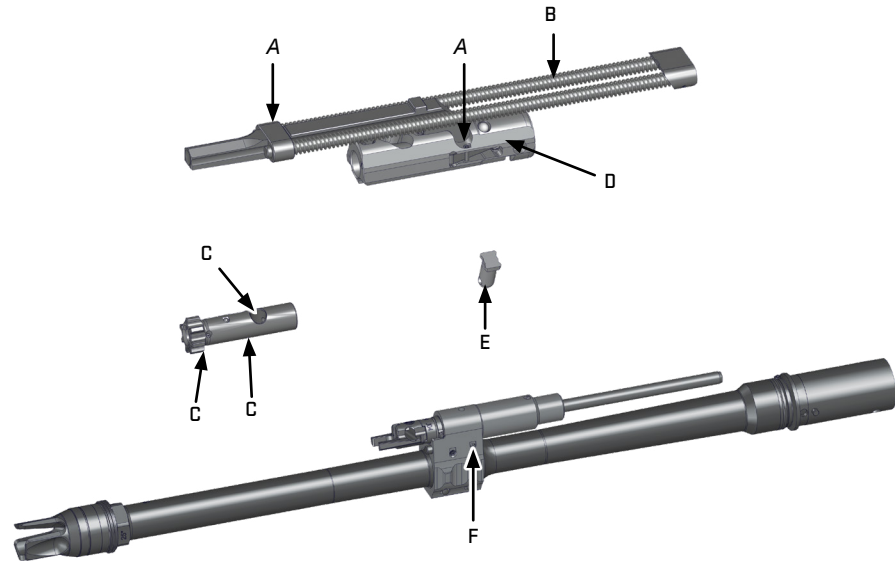
## 11.2 LUBRICATION

### 11.2.1 OPERATING GROUP AND GAS BLOCK

#### CAUTION

DO NOT APPLY LUBRICANT IN THE FACE OF THE BOLT OR FIRING PIN CHANNEL OF THE BOLT. DO NOT APPLY LUBRICANT TO THE EXTRACTOR SLOT. FAILURE TO COMPLY MAY RESULT IN A STOPPAGE.

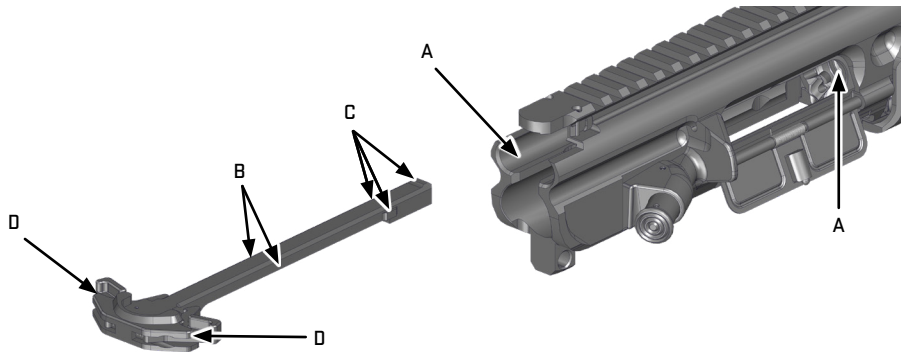
- A. Apply 1 to 2 drops of lubricant to the front of the recoil assembly and to the spring guide, the recoil plate, and bolt carrier.
- B. Apply a light coat of lubricant to the spring guide rods and recoil springs.
- C. Apply a light coat of lubricant to the back of bolt lugs, bolt body, and cam pin hole.
- D. Apply a light coat of lubricant to the bolt carrier contact surfaces.
- E. Apply 1 to 2 drops of lubricant to the cam pin.
- F. Apply 1 to 2 drops of lubricant to gas block spring detent drain hole.





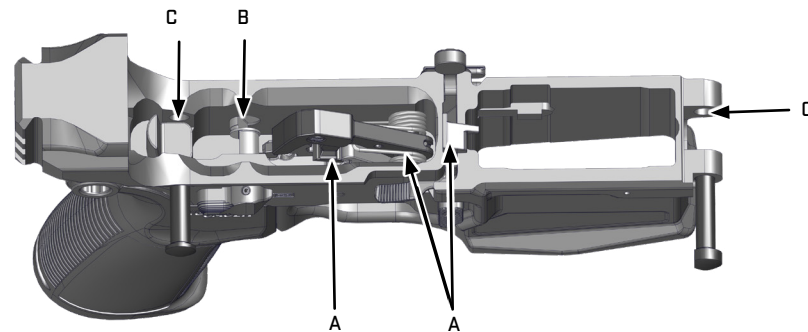
### 11.2.2 UPPER RECEIVER

- A. Apply a thin film of lubricant to the inside of the upper receiver to the surfaces where the operating group makes contact and in the bore.
- B. Apply a thin film of lubricant to the sides of the charging handle.
- C. Apply a thin film of lubricant to the tabs and front raised boss of the charging handle
- D. Apply 1 to 2 drops of lubricant to the charging handle latches.



### 11.2.3 LOWER RECEIVER

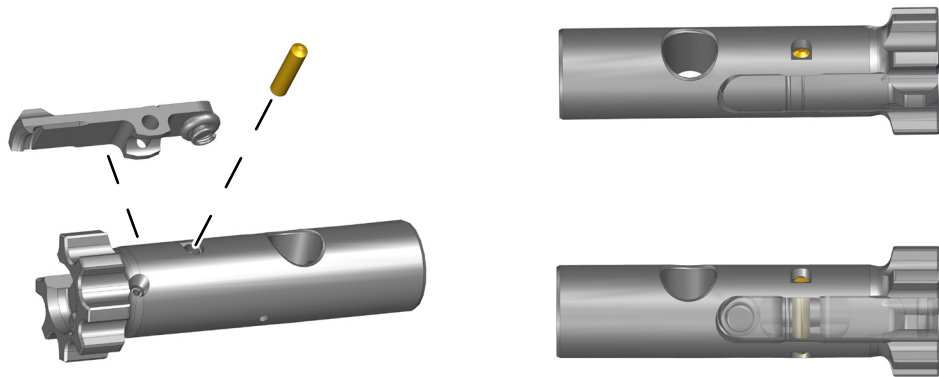
- A. Apply 1 to 2 drops of lubricant to the hammer, trigger, and bolt catch where these parts contact their respective pins.
- B. Apply 1 to 2 drops of lubricant to the selector where it contacts the lower receiver.
- C. Apply 1 to 2 drops of lubricant to pivot and takedown pins.



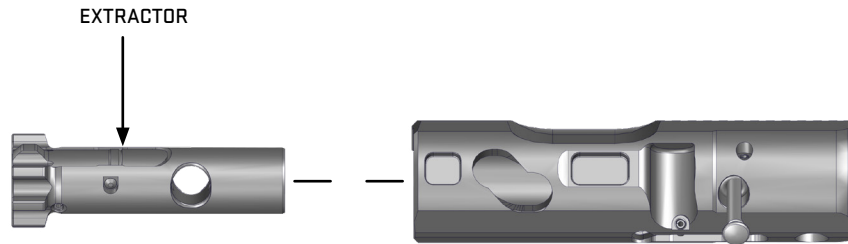


## 12.0 ASSEMBLY

1. Assemble the extractor to the bolt and hold it in place.
2. Install the extractor pin. The extractor pin should be flush with the bolt.



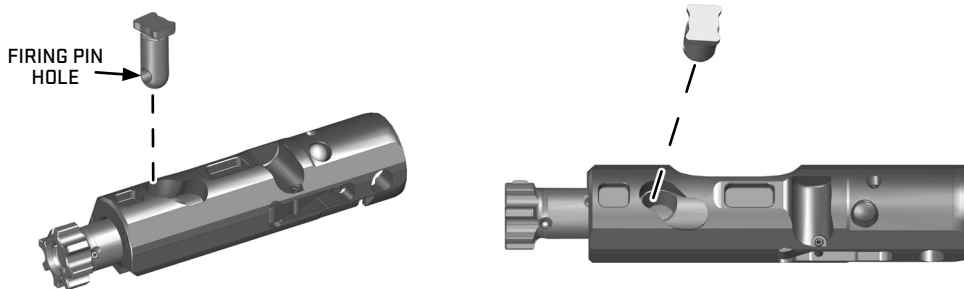
3. Insert the bolt into the bolt carrier with the extractor facing out following the orientation below.



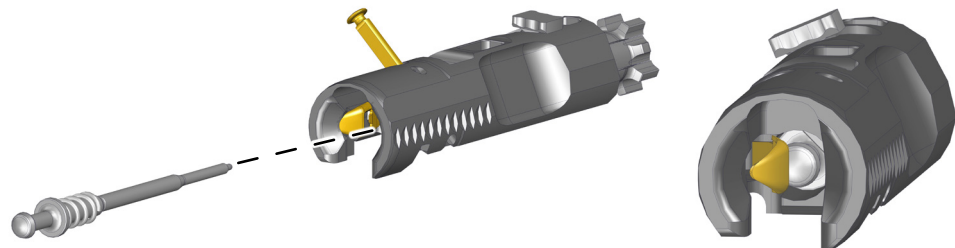
**WARNING CAM PIN**

**FAILURE TO INSTALL CAM PIN MAY RESULT IN INJURY OR DEATH TO THE USER AND CATASTROPHIC DAMAGE TO THE FIREARM.**

4. Adjust the bolt forward so the bolt's cam pin hole aligns with the bolt carrier's cam path.
5. Install the cam pin through the bolt carrier and into the bolt. Ensure the firing pin can travel through the firing pin hole in the cam pin.

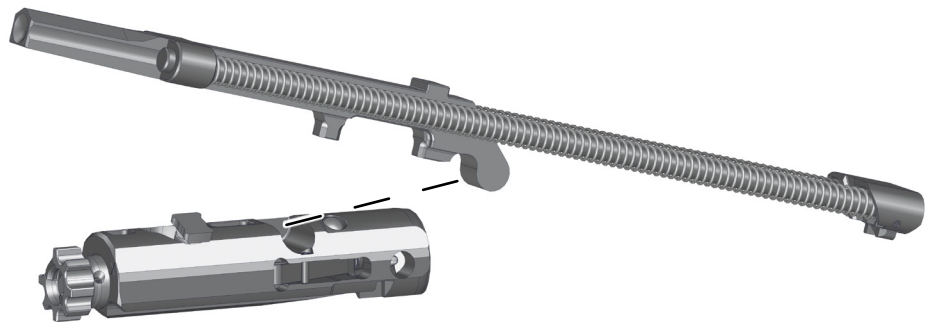


6. Pull the bolt out to its unlocked, extended, position.
7. Pull out the firing pin retaining pin. Retaining pin is captive and cannot be removed.
8. While pressing in the firing pin lock, insert the firing pin through the rear of the bolt carrier, seating it completely forward against the bolt. Release pressure on the firing pin lock and ensure that it captures the head of the firing pin.
9. While applying pressure on the firing pin, push in the firing pin retaining pin from the left side of the bolt carrier. Ensure the retaining pin is positioned between the head of the firing pin and the large flange..





10. Slide the recoil assembly into the bolt carrier from the left side.

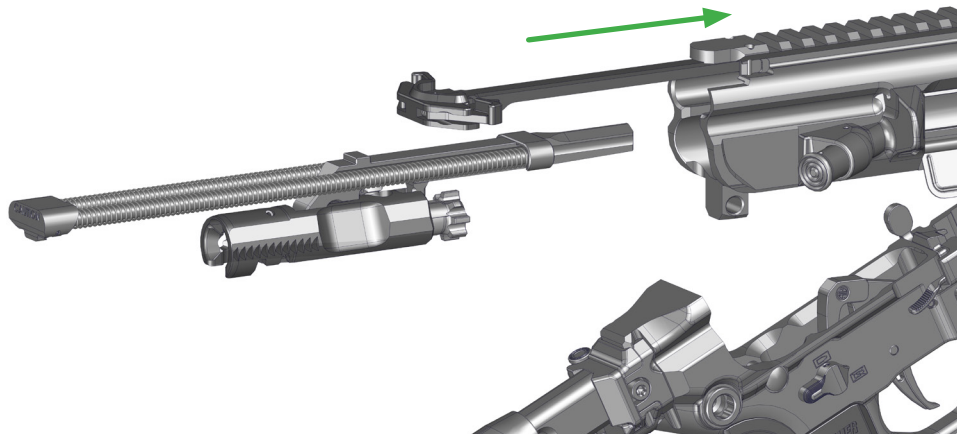


11. Align the upper receiver with the lower receiver, and fully press in the pivot pin from right to left until it locks into place.





12. With the upper receiver pivoted upward, insert the charging handle and operating group into the upper receiver.
13. Push the operating group and charging handle completely forward until they lock into place.



14. Ensure that the takedown pin is pulled out and rotate the receivers together.
15. Push in the takedown pin from right to left until it locks into place.





### 13.0 FUNCTION CHECK

A function check should be performed after any repair, cleaning, or reassembly to ensure the firearm operates properly.



#### **WARNING UNLOAD/CLEAR**



**FAILURE TO ENSURE THE FIREARM IS UNLOADED AND CLEARED COULD RESULT IN UNINTENTIONAL DISCHARGE, CAUSING SERIOUS INJURY, DEATH, OR PROPERTY DAMAGE.**



#### **WARNING FUNCTION CHECK**

**KEEP THE FIREARM POINTED IN A SAFE DIRECTION DURING THE ENTIRE FUNCTION CHECK. IF THE FIREARM FAILS TO COMPLETE THE FUNCTION CHECK, DO NOT USE THE FIREARM. CONTACT CUSTOMER SERVICE.**

1. Ensure the firearm is unloaded and clear of ammunition. See 9.3 *Unload and Clear the Rifle* on page 34.
2. Ensure the fire control selector is rotated to SAFE.

3. Insert an unloaded magazine into the magazine well and pull down to ensure it is fully seated.
4. Pull the charging handle to the rear until the bolt locks open. Lock the charging handle forward.
5. Press the magazine catch. The magazine should fall from the magazine well.
6. Pull the charging handle to the rear and release. After releasing, the bolt catch must drop while the bolt moves forward.
7. With the muzzle pointed in a safe direction and with the safety selector on SAFE, pull the trigger to rear. Nothing should happen.
8. Rotate the safety selector lever to SEMI.
9. Press and hold the trigger. Hammer should fall with a loud click. Do not release trigger.
10. While continuing to hold the trigger, fully retract the charging handle to cock the firearm. Lock the charging handle forward.
11. Slowly release the trigger. The trigger should reset with a light click.
12. If equipped, rotate the selector to AUTO (if not applicable, skip to step 17).
13. Press the trigger and hold it to the rear. You should hear a loud click as the hammer falls.
14. With the trigger pressed to the rear, pull the charging handle to the rear and ease it fully forward. A loud click should be heard at the end of the travel.



15. Release the trigger. No click should be heard as the hammer is the upward, decocked position.
16. Rotate selector from AUTO to SEMI and pull the charging handle to the rear. The hammer should now be cocked.
17. Retest SAFE by rotating the safety selector to SAFE and pulling the trigger. Nothing should happen.
18. Retract the charging handle and press up on the bolt catch lever to lock the bolt to the rear. Lock the charging handle forward.

## CAUTION

NEVER USE A FIREARM OR MAGAZINE THAT SHOWS SIGNS OF DAMAGE OR FAILS A FUNCTION CHECK. VERIFY THE MAGAZINE IS THE CORRECT MODEL AND CALIBER FOR THE RIFLE. IF THE CONDITION OR FUNCTION OF THE RIFLE OR MAGAZINE IS SUSPECT, RETURN THE RIFLE OR MAGAZINE TO SIG SAUER FOR EVALUATION. ALWAYS VERIFY THE CONDITION AND FUNCTION OF THE EQUIPMENT BEFORE USE.

## 14.0 MAGAZINE MAINTENANCE



**WARNING PARTS UNDER SPRING TENSION**



**MAGAZINES CONTAIN SEVERAL SPRING-LOADED PARTS. WEAR EYE PROTECTION AND MAINTAIN CONTROL DURING MAINTENANCE. FAILURE TO COMPLY MAY RESULT IN INJURY.**

### 14.1 DISASSEMBLE MAGAZINE

1. Push in on the magazine insert through the opening in the baseplate and slide the baseplate off of the magazine tube. While pressing down on the insert, to control the magazine spring, remove the baseplate.

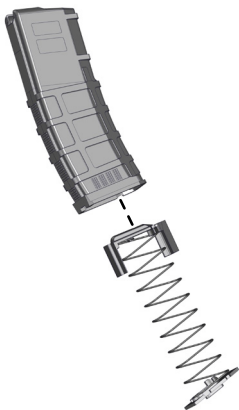




## NOTE

The magazine spring will be attached to the insert and follower. Do NOT remove these components from the spring during operator level maintenance.

2. Remove the insert, magazine spring, and follower from the magazine tube.

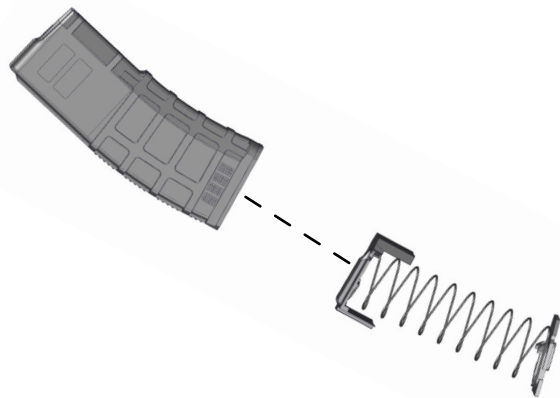


## 14.2 CLEANING

Wipe all parts with a cloth moistened with CLP to remove any buildup or debris then wipe dry.

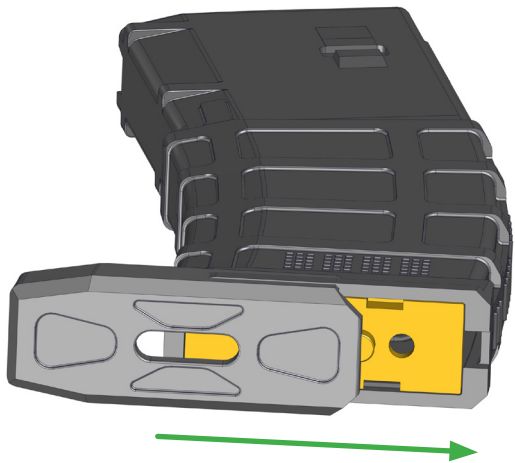
## 14.3 ASSEMBLY

1. Install the magazine follower, spring, and insert into the magazine tube.





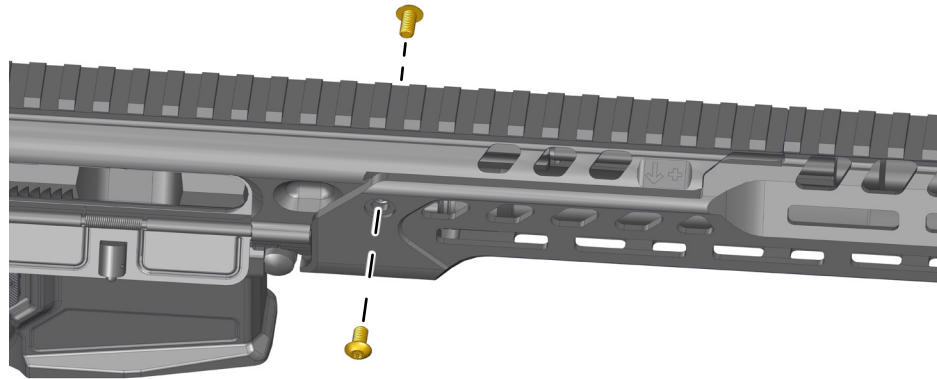
2. Compress the spring by pushing the insert into the magazine tube.
3. Slide the base plate onto the magazine tube until the insert snaps into place.



## 15.0 HANDGUARD

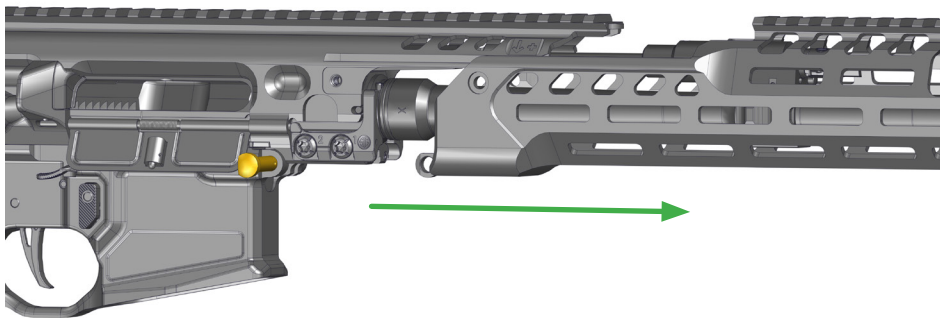
### 15.1 HANDGUARD REMOVAL

1. Use a T15IP® drive bit to remove the screws from the rear of the handguard.



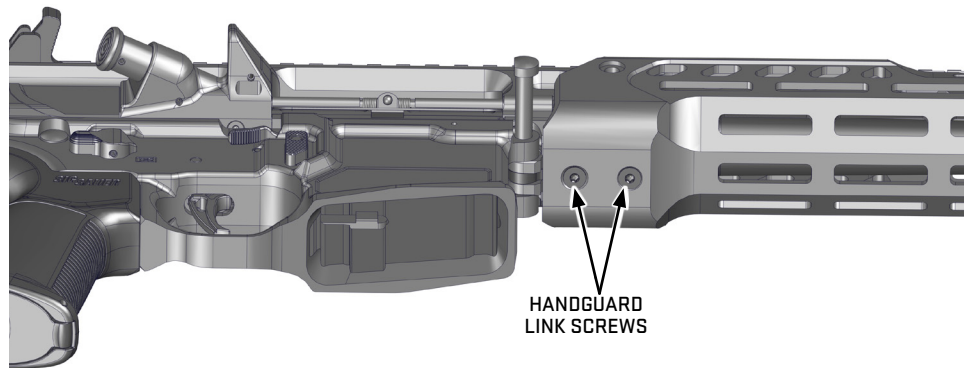


2. Pull pivot pin out until it stops.
3. Slide the handguard forward and off of the upper receiver and barrel.



**NOTE**

Removing handguard link screws is not necessary to take off handguard.





## 15.2 HANDGUARD INSTALLATION

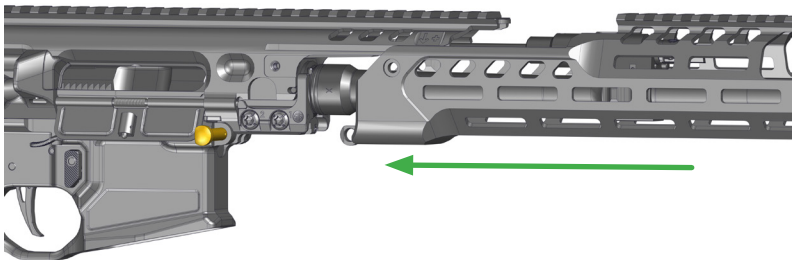


### **WARNING PHYSICAL INJURY/DAMAGE**

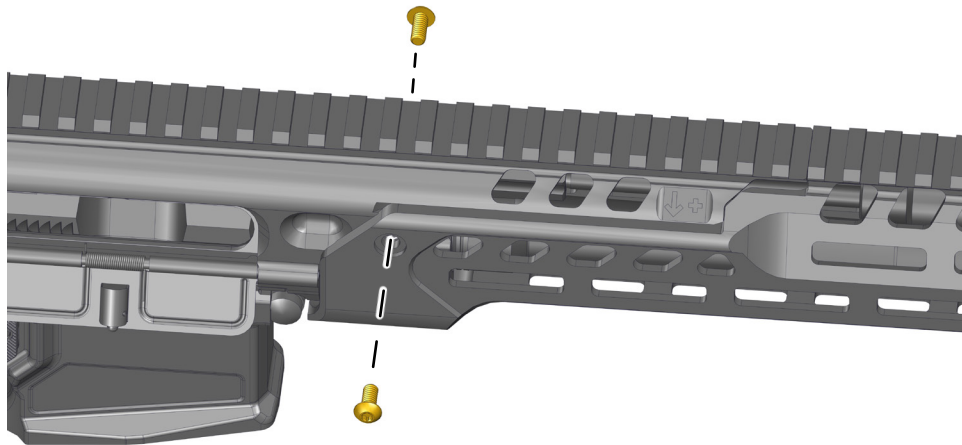


**YOU MUST MAKE SURE THAT WHEN CHANGING BARRELS AND HANDGUARDS, THE FLASH HIDER, MUZZLE BRAKE, OR SUPPRESSOR MUST BE EXPOSED FROM THE END OF THE HANDGUARD. FAILURE TO DO SO COULD RESULT IN INJURY TO THE OPERATOR AND OR DAMAGE TO THE RIFLE.**

1. Slide the handguard onto rails of upper receiver.
2. Push in pivot pin from right to left into lower receiver and handguard link until it stops.



3. Use a T15IP® drive bit to install handguard screws into upper receiver. Torque both screws to 45 in-lbf.





## 16.0 SUPPRESSOR COMPLIANT HANDGUARD



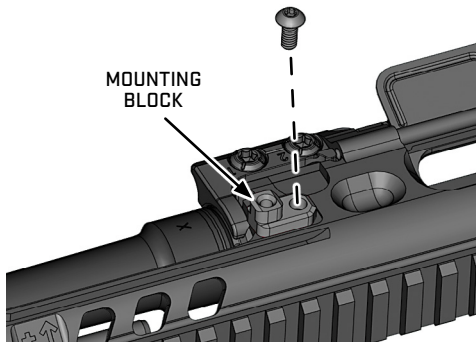
**WARNING UNLOAD/CLEAR**



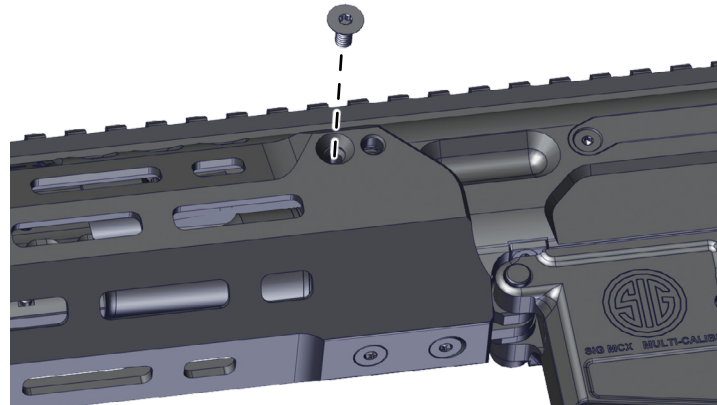
**PRIOR TO INSTALLING A HANDGUARD ENSURE THE FIREARM IS UNLOADED/CLEARED AND ON SAFE WITH THE BOLT FORWARD AND LOCKED. FAILURE TO COMPLY COULD RESULT IN INJURY OR DEATH.**

A suppressor compliant handguard is available for the MCX-SPEAR LT. This wider handguard is used for shorter barrel length rifles.

1. Field strip MCX. See *10.1 Field Strip the SIG MCX-SPEAR LT on page 49.*
2. Remove handguard. See *15.0 Handguard on page 85.*
3. Position mounting block in recess on upper receiver.
4. Install button head screw but do not completely tighten.
5. Repeat for opposite side.

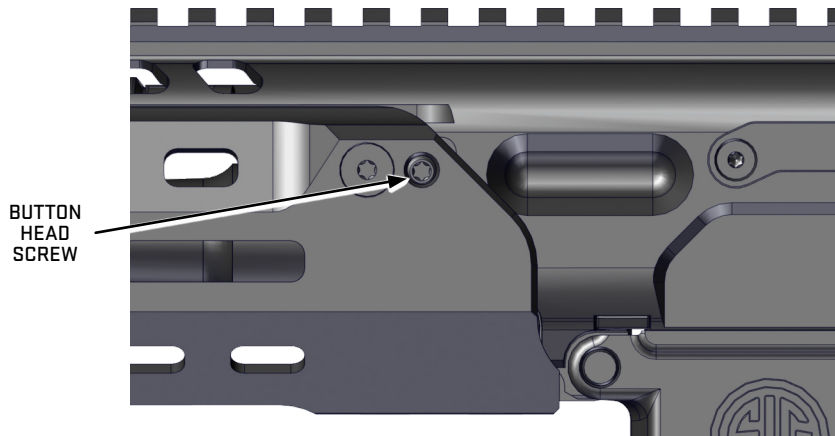


6. Install suppressor handguard to upper receiver.
7. Align holes of handguard with hole of mounting block.
8. Install flat head screws and tighten using a T15 drive bit to 45 in-lbf.
9. Repeat for opposite side.





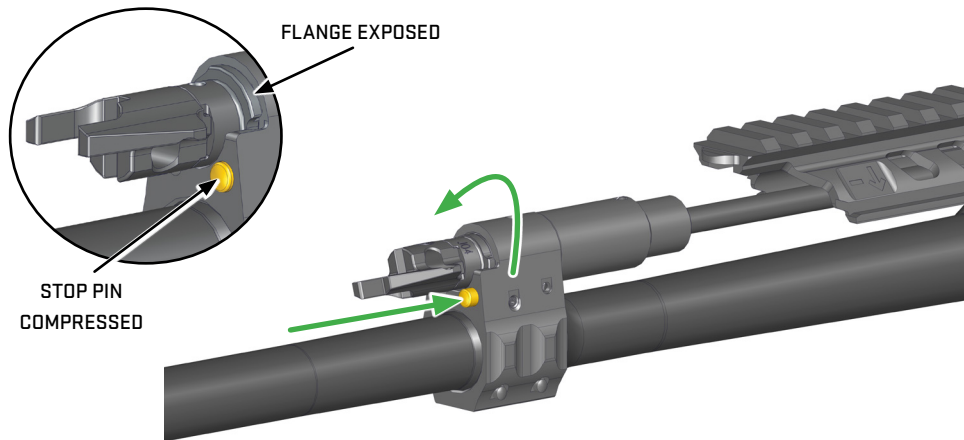
10. Complete the installation by tightening the button head screw to 45 in-lbf. Access the screw through the hole in the handguard.



## 17.0 GAS VALVE AND PISTON

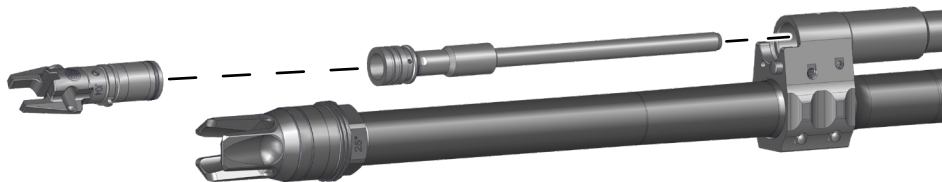
### 17.1 GAS VALVE AND PISTON REMOVAL

1. Compress the stop pin and rotate the gas valve until the flange on the valve is fully exposed.



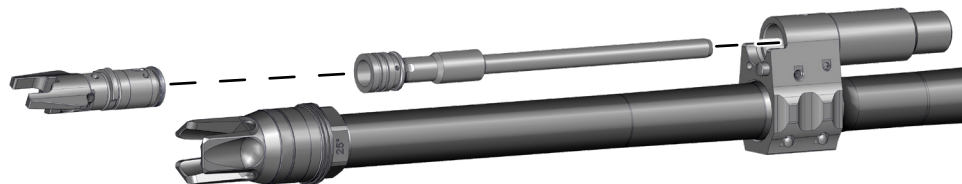


2. Remove gas valve and piston.



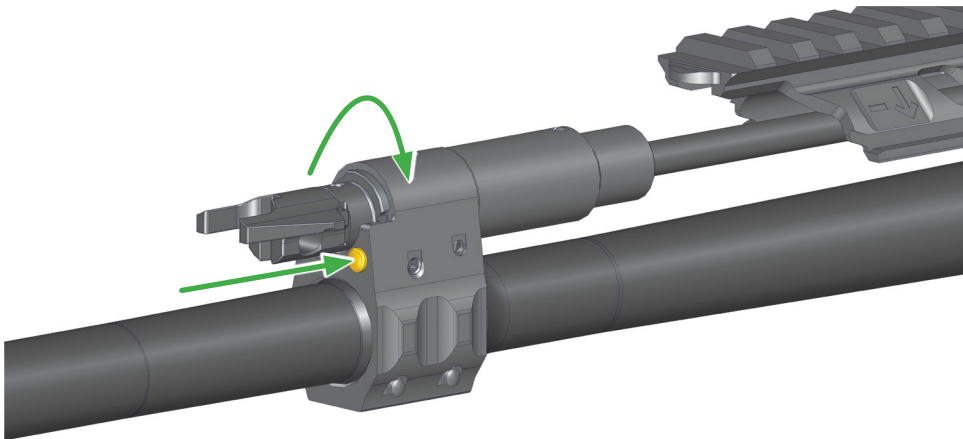
## 17.2 GAS VALVE AND PISTON INSTALLATION

1. Insert piston into front opening of gas block until it is fully seated.
2. Align flange of gas valve upward and insert gas valve into front opening of gas block until flange is seated.

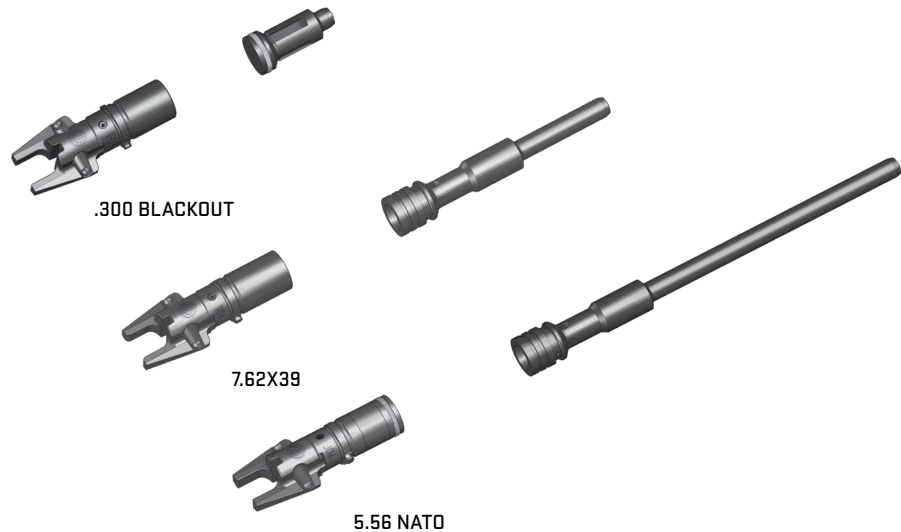




3. Press stop pin and turn gas valve until retained by stop pin.



### 17.3 GAS VALVE CALIBER VARIATIONS





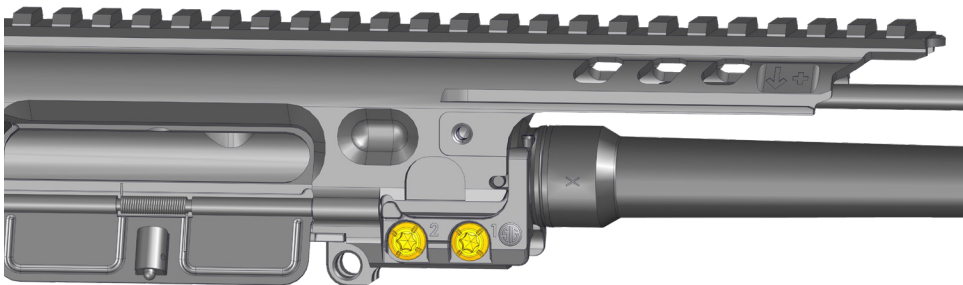
## 18.0 BARREL

### 18.1 BARREL REMOVAL

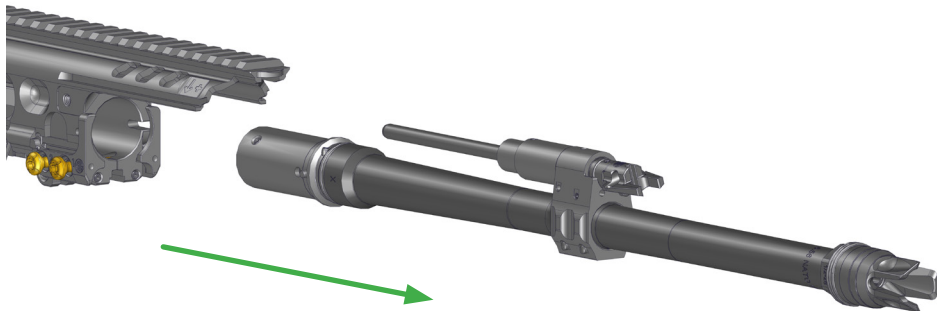
#### NOTE

The operating group must be removed prior to removing the barrel. See *section 10.1 Field Strip the SIG MCX-SPEAR LT on page 49*. The barrel clamping screws are captive to the upper receiver and only need to be loosened to remove the barrel.

1. Use a T27™ drive bit to loosen the two barrel clamping screws from the right side of the upper receiver. The two screws are captive and will not be removed from the receiver.



2. Pull the barrel straight out of the upper receiver.



#### CAUTION

DO NOT WIGGLE THE BARREL BACK AND FORTH AS THIS CAN DAMAGE THE UPPER RECEIVER. IF THE BARREL WILL NOT PULL FREE, USE A 1-INCH WOODEN DOWEL INSERTED IN THROUGH THE REAR OF THE UPPER RECEIVER AND THEN TAP OUT THE BARREL.

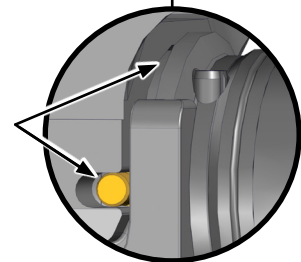
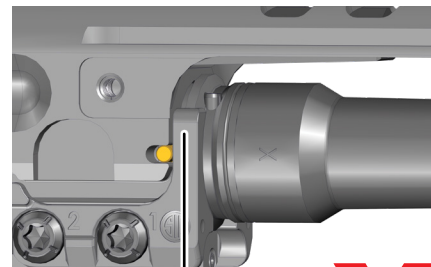
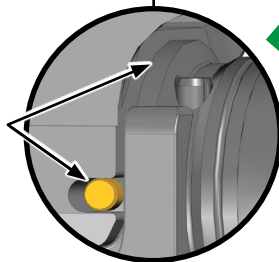
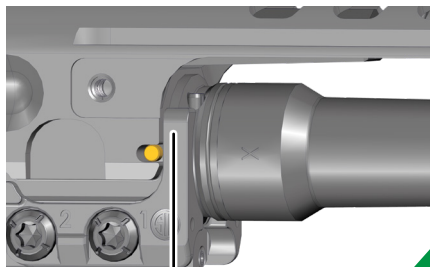


## 18.2 BARREL INSTALLATION

1. Ensure that all mating surfaces are clean.
2. Check the barrel index pins for damage or looseness.
3. Slide the barrel assembly into the upper receiver.

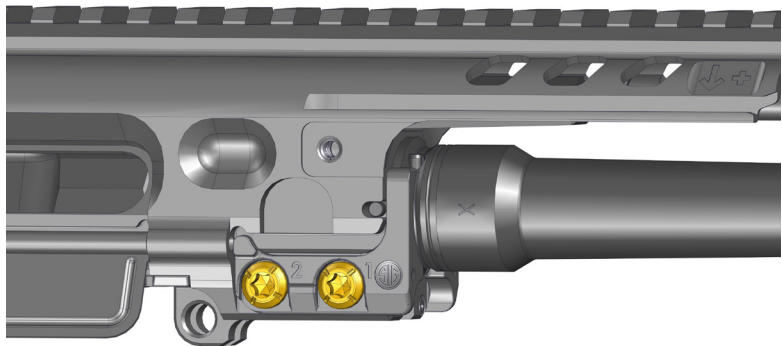


4. Ensure both left and right index pins are seated completely into the upper receiver.





5. Squeeze the left and right clamp together until they contact the upper receiver. Using a T27 torque wrench, tighten screw #1 and then screw #2. Alternate back and forth between screw #1 and screw #2 until they are hand tight. Starting again with screw #1, apply a torque of 60 lbf-in. Move to screw #2 and apply torque of 60 lbf-in. Return to screw #1 and tighten again to ensure that the screw is at 60 lbf-in.

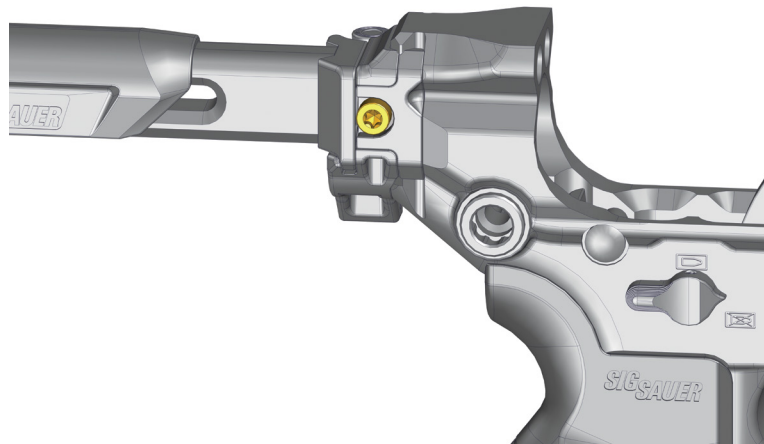


6. Reinsert the bolt carrier assembly and ensure that the bolt locks properly.

## 19.0 FOLDING STOCK

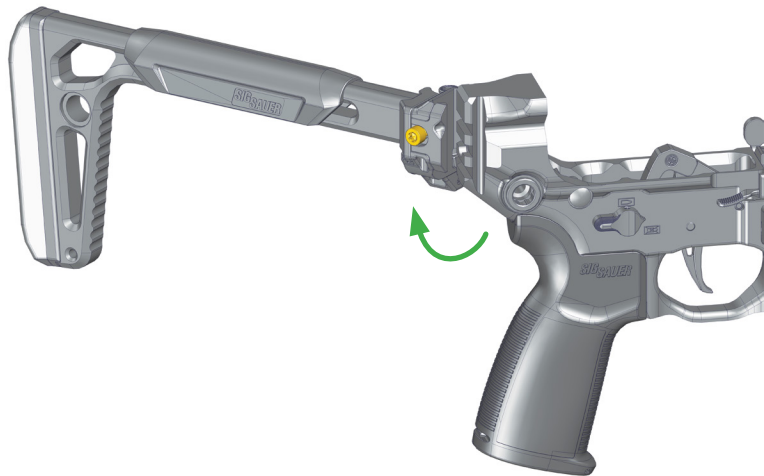
### 19.1 FOLDING STOCK REMOVAL

1. Use a T27 drive bit to loosen clamp screw.



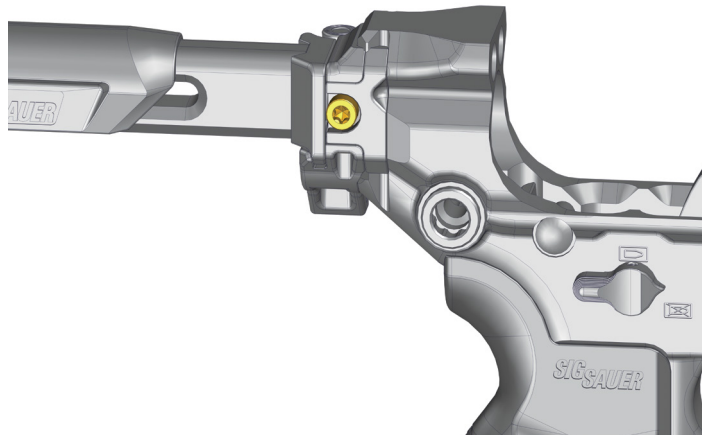


2. Remove the stock from receiver.



## 19.2 FOLDING STOCK INSTALLATION

1. Position the stock onto rear of receiver then tighten clamp screw with a T27 until snug plus 1/4 turn.



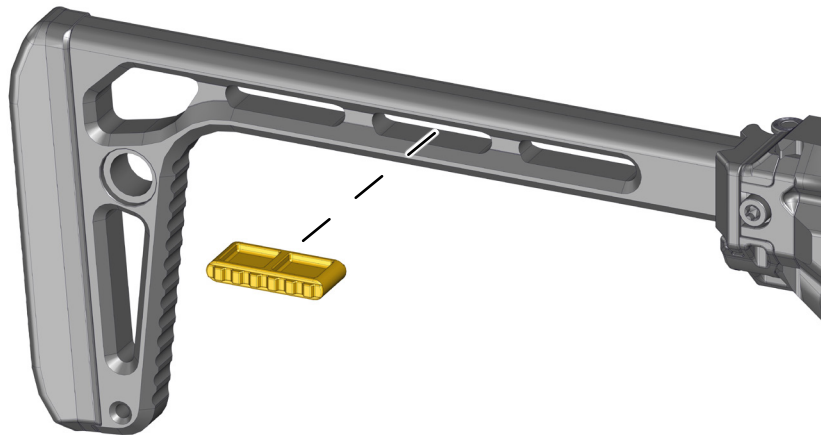


### 19.3 CHEEK REST REMOVAL

2. Slide cheek rest up and off of stock assembly.



3. Remove cheek rest locking insert from stock assembly.





## 19.4 CHEEK REST INSTALLATION

1. Install cheek rest locking insert into slot in stock assembly.



2. Slide cheek rest down onto stock assembly until it is retained by the locking insert.





## 20.0 TROUBLESHOOTING GUIDE



### WARNING STOPPAGE



**STOP FIRING IMMEDIATELY. UNLOAD AND CLEAR THE FIREARM.**

A stoppage is an interruption in the rifle's cycle of function that can be cleared by the operator taking immediate action. Immediate action consists of steps taken by the operator to place the rifle back in service without investigating the cause of the stoppage. Use caution when attempting to remove cartridges or rounds from the chamber or the interior of the upper receiver as these areas may be hot after firing.

#### Immediate action:

1. Keep the firearm pointed in a safe direction.
2. Unload and clear the firearm immediately by removing the magazine, locking the slide to the rear, and clearing any ammunition from the firearm.
3. Visually and physically check the chamber, breech face, and magazine well.

With the firearm unloaded and cleared, perform an additional visual inspection of the firearm and the ammunition. If a bore obstruction exists, refer to the following page: *20.1 Obstructed Bore on page 111*. If damage to the firearm is found, the stoppage persists, or a malfunction is suspected, take the firearm to a certified SIG SAUER Armorer for service.

## 20.1 OBSTRUCTED BORE



### WARNING OBSTRUCTED BORE



**STOP FIRING IMMEDIATELY AND KEEP THE FIREARM POINTED IN A SAFE DIRECTION. UNLOAD AND CLEAR THE FIREARM. DO NOT FIRE ANOTHER ROUND UNTIL THE OBSTRUCTION IS CLEARED. FAILURE TO COMPLY CAN RESULT IN SERIOUS INJURY OR DEATH TO THE OPERATOR AND/OR OTHERS AND CATASTROPHIC DAMAGE TO THE FIREARM.**

Immediately stop shooting and keep the firearm pointed in a safe direction whenever:

- There is difficulty or unusual resistance in chambering a cartridge;
- A cartridge misfires (does not go off);
- The rifle fails to extract a fired cartridge case;
- Unburned grains of propellant powder are discovered;
- A shot sounds weak or abnormal.

It is possible that a bullet is lodged partway down the barrel. If a bullet is in the bore, do not attempt to shoot it out with another cartridge, a blank, or a case without a bullet. Bullets can become lodged in the barrel when the cartridge has been improperly loaded without propellant powder, the powder fails to ignite, or the bullet was not properly seated in the cartridge case. Immediately unload and clear the firearm. Field strip the firearm and look through from the rear of the receiver.



It is not sufficient to merely look in the chamber as a bullet may be lodged some distance down the barrel where it cannot easily be seen. Attempt to remove the bullet by tapping it out with a cleaning rod from the chamber end of the rifle. If the bullet can be removed, clean any unburned powder grains from the bore, chamber, and mechanism before resuming shooting. If the bullet cannot be dislodged, take the firearm to a certified SIG SAUER Armorer.

## 20.2 COOK-OFF



### **WARNING COOK-OFF**



**COOK-OFF IS DEFINED AS A CHAMBERED CARTRIDGE DETONATING DUE TO THE HEAT OF THE BARREL. FAILURE TO COMPLY WITH THE BELOW LISTED STEPS COULD RESULT IN DEATH, SERIOUS INJURY, OR PROPERTY DAMAGE.**

If the rifle stops firing with a cartridge in the chamber of a hot barrel due to a misfire or stoppage, do the following:

1. Keep the rifle pointed in a safe direction.
2. Immediately remove the magazine and chambered cartridge.
3. If the cartridge cannot be removed within 10 seconds, keep rifle pointed in a safe direction. Wait at least 15 minutes for the chamber and the barrel to cool and then remove the cartridge.

## 20.3 GENERAL STOPPAGES

STOPPAGE	TEST/INSPECTION	CORRECTIVE ACTION
Failure to Fire	Safety selector lever on SAFE	Rotate to FIRE position
	Firing pin improperly installed	Reassemble correctly
	Excessive lubricant in firing pin hole of bolt	Clean out excess lubricant and reassemble
	Damaged ammunition	Replace ammunition
Failure to Feed	Overloaded magazine	Remove excess cartridges
	Dirty magazine	Clean magazine
	Damaged magazine	Replace magazine
	Poor lubrication or dirty firearm	Field strip, clean, and lubricate the firearm
	Dirty, corroded, or damaged ammunition	Replace ammunition
Failure to Chamber	Dirty, corroded, or damaged ammunition	Replace ammunition
	Dirty chamber or feed ramps	Clean chamber and feed ramps
	Poor lubrication/Dirty firearm	Field strip, clean, and lubricate the firearm
	Weak action spring	Replace spring
Double Feed	Damaged magazine	Replace magazine



STOPPAGE	TEST/INSPECTION	CORRECTIVE ACTION
Bolt Fails to Lock	Dirty or poorly lubricated bolt or firearm	Field strip, clean, and lubricate the firearm, paying special attention to the bolt
	Ammunition not to specification	Use only the correct ammunition
	Damaged bolt lugs	Contact SIG Sauer Customer Service
Failure to Extract	Dirty, corroded, or damaged ammunition	Replace ammunition
	Dirty or poorly lubricated chamber, extractor, or firearm	Field strip, clean, and lubricate the firearm, paying special attention to the chamber
	Damaged extractor or extractor spring	Contact SIG Sauer Customer Service
Bolt Fails to Lock After Last Round is Fired	Damaged magazine	Replace magazine
	Damaged bolt catch	Contact SIG Sauer Customer Service
	Gas valve not in the proper setting	Set gas valve to applicable setting
Under Function	Damaged or worn gas rings	Contact SIG Sauer Customer Service
	Gas valve not in the proper setting	Set gas valve to applicable setting
Frozen Fire Control Selector	Lack of lubricant	Lubricate selector
	Dirt or residue buildup beneath selector	Clean fire control selector

## 20.4 MINIMIZING STOPPAGES

- Most stoppages can be minimized by cleaning and lubricating the firearm. See *11.0 Cleaning and Lubrication on page 59*.
- Cleaning and lubricating the firearm after each range session will reduce the chances of a stoppage due to dirt and residue buildup.
- Perform maintenance if the firearm is exposed to extreme environmental conditions (rain, snow, freezing temperatures, etc.).
- Periodically inspect the firearm if it is to be stored for extended periods of time without use.
- Most stoppages are directly related to the magazine. Perform maintenance on the magazines as well as the firearm. See *14.0 Magazine Maintenance on page 81*.
- Mark the magazines so the operator can note which ones are more commonly involved in stoppages and malfunctions.



## 21.0 STORAGE AND TRANSPORTATION



### **WARNING STORAGE**

**NEVER PLACE OR STORE ANY FIREARM IN SUCH A MANNER THAT IT MAY BE DISLODGED. FIREARMS SHOULD ALWAYS BE STORED, LOCKED, UNLOADED, SEPARATE FROM THEIR AMMUNITION, AND INACCESSIBLE TO CHILDREN AND ANY OTHER UNAUTHORIZED PERSON. THE USE OF A LOCKING DEVICE OR SAFETY LOCK IS ONLY ONE ASPECT OF RESPONSIBLE FIREARMS STORAGE. FAILURE TO PROPERLY STORE FIREARMS MAY CAUSE SERIOUS INJURY OR DEATH TO SELF OR OTHERS, OR PROPERTY DAMAGE.**

#### **21.1 SHORT TERM STORAGE (90 DAYS OR LESS)**

1. Ensure the chamber and magazine do not contain live ammunition.
2. Clean the bore and chamber.
3. Apply a generous coat of CLP to the chamber and bore.
4. Apply a light coat of CLP to all other metal surfaces for corrosion protection.

#### **21.2 LONG TERM STORAGE (90 DAYS OR LONGER)**

1. Ensure the firearm is thoroughly cleaned.
2. Apply a medium coat of CLP to the chamber and bore.
3. Apply a light coat of CLP to all other metal surfaces for corrosion protection.
4. Wrap the firearm with a waterproof material.
5. Place the firearm in a corrosion resistant barrier bag.

#### **21.3 ENVIRONMENTAL STORAGE RECOMMENDATIONS (ARMORY)**

Provide humidity control to limit the relative humidity (RH) to no greater than 40% at 80°F (26.7°C). If personnel will be working in these areas, design to 68°F (20.0°C) dry bulb and 40% RH for indoor design heating conditions, and 75°F (23.9°C) dry bulb and 40% RH for indoor design cooling conditions.

#### **21.4 TRANSPORTATION**

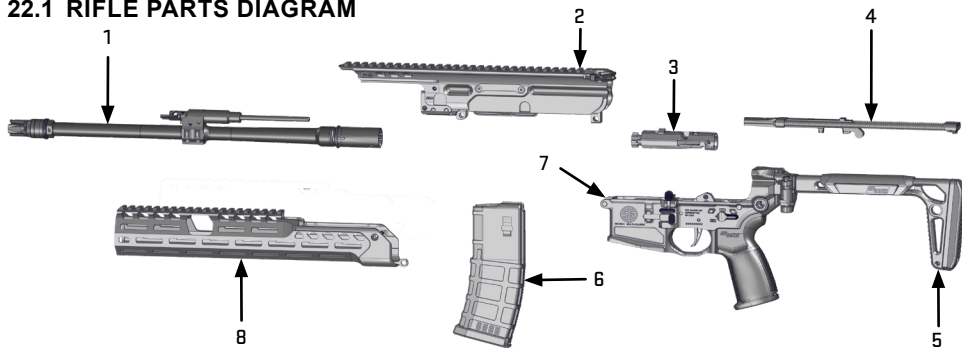
IT IS THE OWNER'S RESPONSIBILITY TO FAMILIARIZE THEMSELVES WITH THE LAWS OF ANY JURISDICTION(S) THEY ARE PLANNING TO TRAVEL TO AND THROUGH WITH THE FIREARM.

When transporting the firearm to and from shooting activities, keep it unloaded for safety purposes. When storing the firearm for transportation, keep it separated from ammunition, under lock and key, and out of the reach of children and other unauthorized persons. If transporting the firearm in a vehicle, ensure that it is secured within the confines of the vehicle. Should the vehicle become involved in an accident, the firearm could become dislodged and move about the interior of the vehicle or be ejected from the vehicle.



**22.0 SIG MCX-SPEAR LT PARTS DIAGRAMS**

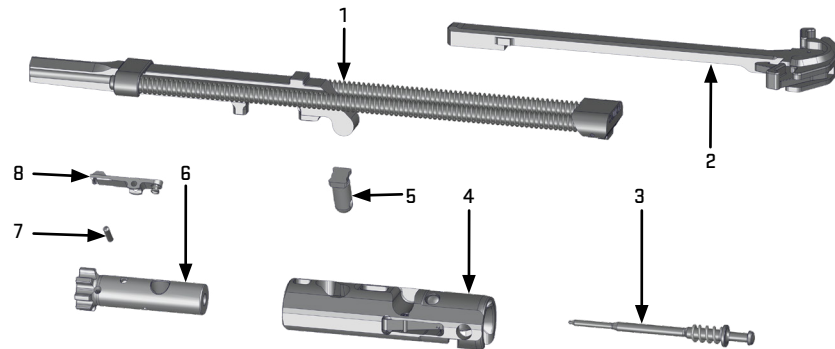
**22.1 RIFLE PARTS DIAGRAM**



NUMBER	NOMENCLATURE
1	Barrel Assembly
2	Upper Receiver
3	Bolt
4	Recoil Assembly

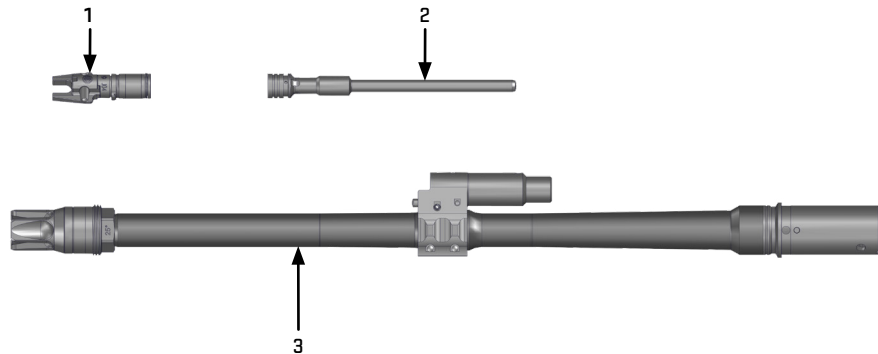
NUMBER	NOMENCLATURE
5	Buttstock
6	Magazine
7	Lower Receiver
8	Handguard

**22.2 OPERATING GROUP PARTS DIAGRAM**



NUMBER	NOMENCLATURE
1	Recoil Assembly
2	Ambidextrous Charging Handle
3	Firing Pin and Spring
4	Bolt Carrier

NUMBER	NOMENCLATURE
5	Cam Pin
6	Bolt
7	Extractor Pin
8	Extractor

**22.3 BARREL ASSEMBLY—5.56 NATO, 16-INCH BARREL (OTHER MODELS VARY)**

NUMBER	NOMENCLATURE
1	Gas Valve
2	Piston
3	Barrel and Gas Block

**9 INCH MCX-SPEAR LT****11.5 INCH MCX-SPEAR LT****16 INCH MCX-SPEAR LT**



## 23.0 REPLACEMENT PARTS POLICY



### **WARNING PARTS REPLACEMENT**

**IT IS THE PURCHASER'S RESPONSIBILITY TO BE ABSOLUTELY CERTAIN THAT ANY PARTS ORDERED FROM THE FACTORY ARE CORRECTLY FITTED AND INSTALLED. FIREARMS ARE COMPLICATED MECHANISMS AND IMPROPER FITTING OF PARTS MAY RESULT IN A DANGEROUS MALFUNCTION, DAMAGE TO THE FIREARM, AND SERIOUS INJURY TO THE SHOOTER AND OTHER PERSONS. THE PURCHASER AND INSTALLER OF PARTS MUST ACCEPT FULL RESPONSIBILITY FOR THE CORRECT ADJUSTMENT AND FUNCTIONING OF THE FIREARM AFTER SUCH INSTALLATION.**

### **Parts Policy**

Our Service Department maintains a full complement of replacement parts. Even though most gunsmiths have the knowledge, training, and the ability to make necessary repairs to the firearm, the skill and workmanship of any particular third-party gunsmith is totally beyond our control.

Should the firearm ever require service, it is strongly recommended that it be returned to SIG SAUER Inc. A firearm is a precision instrument and some replacement parts will require individual fitting to ensure correct operation. A wrong part, improper fitting, or incorrect mechanical adjustment may result in an unsafe condition or dangerous malfunction, damage to the firearm, or cause possible serious injury to the shooter or others.

IF ANY PART IS ORDERED WITHOUT RETURNING THE FIREARM TO SIG SAUER, the owner bears full responsibility for ensuring that the part supplied is correct for their particular firearm and is properly installed and fitted by a qualified smith.

SIG SAUER IS NOT RESPONSIBLE FOR THE FUNCTIONING OF ANY FIREARM IN WHICH REPLACEMENT PARTS ARE INSTALLED BY OTHERS. THE USE OF UNAPPROVED AFTERMARKET PARTS WILL VOID THE WARRANTY OF THIS FIREARM. THE REPLACEMENT OF ORIGINAL EQUIPMENT MANUFACTURER (OEM) SIG SAUER PARTS WITH AFTERMARKET PARTS IS UNAUTHORIZED AND IN SOME INSTANCES COULD ALTER THE FUNCTION OF THE FIREARM, CREATING A DANGER TO THE OPERATOR.

Scan the QR code below to visit the Small Parts Shopper page at sigsauer.com:





## 24.0 FACTORY REPAIR OF THE FIREARM

Contact SIG SAUER Customer Service for questions or concerns regarding the performance or serviceability of the firearm. There are three ways to contact SIG SAUER Customer Service:

Have the firearm's serial number readily available before contacting SIG SAUER Customer Service.

1. Call (603) 610-3000, choose option 1.
2. Email [CustomerService@sigsauer.com](mailto:CustomerService@sigsauer.com).
3. Go to <https://www.sigsauer.com/customer-support> to message customer service electronically. Scan the QR code below to visit the Customer Support page at [sigsauer.com](https://www.sigsauer.com).



## 24.1 RETURNING FIREARMS FOR REPAIR

**Do not ship a firearm without an RMA number provided by Customer Service.**



**WARNING DO NOT SHIP AMMUNITION**



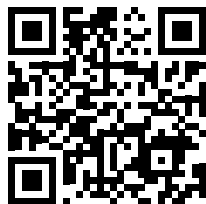
**BEFORE SHIPPING ANY FIREARM, BE ABSOLUTELY CERTAIN THAT THE FIREARM AND MAGAZINES ARE UNLOADED. DO NOT SHIP AMMUNITION WITH A FIREARM.**

1. The RMA number allows SIG SAUER to track the status of the return from the time SIG SAUER receives the firearm until it is returned.
2. Package the firearm securely to prevent damage.
3. Do not include any accessories such as scopes or mounts unless directed to do so.
4. Some states and localities, require firearms to be shipped and returned to SIG SAUER using a federally licensed firearms dealer.
5. Federal law prohibits persons who do not possess a Federal Firearms License (FFL) from shipping a firearm via the U.S. Postal Service.
6. Any shipment of firearms outside U.S. borders is subject to the export laws of the United States and to the valid laws of the specific country.
7. SIG SAUER is not responsible for any damage to a firearm during shipping until it is received.
8. Firearms must be insured and prepaid prior to shipment (SIG SAUER does not accept collect shipments) to the address provided by Customer Service.



## **SIG SAUER INFINITE GUARANTEE™**

For warranty information on new SIG SAUER firearms, scan the QR code below to visit the SIG SAUER Warranty Information and Registration page. New firearms can also be registered and warranty information can be found on the website.



**THIS PAGE INTENTIONALLY LEFT BLANK**

# ***SIG SAUER***<sup>®</sup>

**sigsauer.com**

**SIG SAUER, Inc.  
72 Pease Boulevard, Newington, NH 03801 USA**

All trademarks, service marks, trade names, trade dress, product names, and logos appearing in this manual are the property of their respective owners. No trademark or service mark appearing in this manual may be used without written consent of the mark's owner.