

# **SIGSAUER®**



## ***SIG P322™ PISTOLS***

***OPERATOR'S MANUAL: HANDLING & SAFETY INSTRUCTIONS***

READ THE INSTRUCTIONS AND WARNINGS IN THIS MANUAL CAREFULLY BEFORE USING THIS FIREARM. DO NOT DISCARD THIS MANUAL.

THIS MANUAL SHOULD ALWAYS ACCOMPANY THIS FIREARM AND BE TRANSFERRED WITH IT UPON CHANGE IN OWNERSHIP, OR WHEN THE FIREARM IS PRESENTED TO ANOTHER PERSON.





# WARNINGS

## 1.0 SAFETY WARNINGS

**READ THIS ENTIRE MANUAL THOROUGHLY AND CAREFULLY PRIOR TO USING THIS FIREARM.**

The warnings in this operators manual are extremely important. By understanding the dangers inherent in the use of any firearm, and by taking the precautions described in this manual, you can experience a high level of safety in the use of your firearm. Failure to heed any of these warnings may result in serious injury or death to you or others, as well as severe damage to the firearm or other property.

**WARNINGS** in this manual identify a clear danger to the person performing that procedure. Warnings are identified by a red banner with the word **WARNING** in white, bold, uppercase letters and a **WARNING** icon. Failure to comply with a **WARNING** can result in serious injury or death to you or a bystander.



## WARNING

**CAUTIONS** in this manual identify a risk of damage to the firearm being maintained. **CAUTIONS** are identified by a black banner with the word **CAUTION** in white, bold, uppercase letters.

## CAUTION



# WARNINGS

**SIG SAUER**

SIG SAUER, INC.<sup>®</sup> firearms are designed to function reliably with proper care and knowledgeable use. Operators must understand the safe operation and use of any SIG SAUER firearm. Read and follow these instructions carefully. Do not use the firearm without understanding the instructions outlined in this manual and the safe operation of the firearm. **Failure to follow the instructions outlined in this manual may result in serious injury or death to the operator and/or others. Damage to the firearm and other property may also occur.**



# WARNINGS

## 2.0 HANDLING

### 2.1 SAFETY MECHANISMS

#### MANUAL SAFETY

Consistent with individual operators' philosophies of use, SIG SAUER offers pistols with and without a manual safety, and the decision whether to deploy a manual safety rests with the operator. This is an important decision that must consider several factors, including the intended use of the firearm (e.g., law enforcement, defensive carry, home defense, range use, competition), level of firearms experience and training, frequency of practice, holster selection, and carry position, among others. The internal safeties are designed to prevent it from firing without the trigger being fully pulled. When the trigger is pulled or depressed, even unintentionally—whether by a finger or foreign object—the firearm will fire as designed. When engaged, a manual safety locks the trigger and prevents it from being accidentally or intentionally pulled, providing additional protection from unintentional discharge. However, an engaged manual safety will also prevent an operator from firing their pistol even when they need it to fire if the manual safety is not first disengaged.

SIG SAUER encourages those considering the purchase of a firearm to carefully evaluate whether a manual safety would be the best choice for them.



# WARNINGS

**SIG SAUER**

Regardless of whether a firearm is equipped with an external manual safety, it remains the operator's obligation to continue to practice safe firearm handling. Firearms should always be treated as loaded and must be handled in a safe manner even if the firearm is equipped with a manual safety. Trigger discipline and utilizing an appropriate holster that protects the trigger when a firearm is being carried is of paramount importance even for firearms that have a manual safety (as the pistol can be carried with the safety in a disengaged condition). Be advised, however, that holsters, while offering further trigger protection, do not prevent accidental discharges as it may be possible for a foreign object to get into the holster, particularly with light-bearing holsters. Extreme caution should be taken when holstering and unholstering a pistol to ensure nothing gets into the holster. Pistol safeties, whether internal or external, should never be relied upon to excuse undisciplined handling of a firearm.

This firearm may not have a manual safety if you have made the decision, based on the factors above, to purchase a gun without a manual safety. A manual safety – when engaged -- is designed to mechanically prevent the firearm from discharging when the trigger is pulled or pressed, either intentionally or unintentionally. **THE MOST EFFECTIVE SAFETY IS TO CARRY YOUR PISTOL WITHOUT A ROUND IN THE CHAMBER, AND TO LOAD A ROUND IN THE CHAMBER ONLY WHEN READY TO FIRE.** Regardless of whether your firearm is equipped with a manual safety you must take steps to protect against unintentional movement of the trigger, particularly if you elect to carry your pistol with a round in the chamber. If you have a round in the chamber and the trigger is pressed to the rear, the firearm will fire absent an engaged manual safety.



# WARNINGS

A manual safety is designed to augment, not replace, safe firearm handling practices. You are responsible to protect against inadvertent trigger movement while carrying any firearm. Even if your firearm is equipped with a manual safety, you must ensure that the trigger is not contacted in any circumstance--whether by finger or an object--other than when you intend to discharge the firearm.

## 2.1.1 BASIC RULES OF SAFE FIREARMS HANDLING

- ALWAYS treat every firearm as if it were loaded.
- ONLY load a round in the chamber when ready to fire.
- NEVER pull the trigger or place fingers on the trigger or in the trigger guard until ready to fire.
- NEVER allow clothing or other foreign objects to interfere or come in contact with the trigger.
- ALWAYS carry a pistol in a holster specifically designed for that pistol. It is the responsibility of the customer to ensure the holster is compatible with their specific pistol and any installed accessories.
- ALWAYS be sure the barrel is clear of any obstruction.
- ALWAYS be aware of the surroundings, and the safety of bystanders before shooting. Know the target and what is in front of and beyond it.
- ALWAYS use clean, dry, original factory-made ammunition of the proper type and caliber for the firearm.
- ALWAYS wear ear protection and safety glasses when shooting.



# WARNINGS

**SIG SAUER**

- ALWAYS carry a firearm so that control of the muzzle can be maintained in the event of a fall or stumble.
- NEVER shoot at a flat surface or water.
- DO NOT leave a loaded firearm unattended. Only store a firearm that is unloaded, cleared of all ammunition, and locked in a secure place inaccessible to children or unauthorized persons.
- NEVER allow the firearm to be used by anyone who has not read and understood the Operator's Manual.
- ALWAYS unload and clear a firearm according to the instructions in the Operator's Manual before handing it to another person.
- DO NOT point any firearm, loaded or unloaded, at any undesignated or unsafe target.
- NEVER discharge a firearm near an animal unless the animal is trained to accept the noise. An animal's startled reaction could injure it or cause an accident.
- NEVER drink alcoholic beverages or use drugs before or during shooting, as vision and judgment could be seriously impaired, making firearm handling unsafe.
- ALWAYS seek a doctor's advice before using a firearm if using medication that would impair judgment or usage.



# WARNINGS

## 2.1 ABUSIVE HANDLING

SIG SAUER firearms incorporate effective mechanical safeties. However, like any mechanical device, exposure to abusive conditions may harm these safety mechanisms and cause them to fail to work as designed. Do not subject the SIG SAUER firearm to any abusive handling. This includes the firearm being dropped, impact to the firearm, or the firearm being struck by another object. Always maintain control of the firearm. If the firearm suffers an abusive event such as previously described, or experiences a malfunction, do not attempt to use the firearm. Keep the firearm pointed in a safe direction, unload and clear the firearm of all ammunition immediately, and have it inspected by a certified SIG SAUER armorer before using the firearm.

ALWAYS keep the firearm pointed in a safe direction. A safe direction is defined as an area where, if the firearm were to discharge, no property damage would occur, and no personal injury would result.

As previously noted, if the SIG SAUER firearm suffers an abusive event, unload it immediately and have it inspected by a certified SIG SAUER Armorer prior to using the firearm. If the firearm suffers an abusive event during a life-threatening/self-defense situation, follow the steps below immediately:

1. Pulling the slide entirely rearward to eject the chambered cartridge.
2. Releasing the slide to chamber a new cartridge and resetting the trigger mechanism. (Do not ride the slide forward.)
3. The firearm should now be returned to proper operational condition.

Intentional or repetitive abusive handling of any SIG SAUER firearm will void the manufacturer's warranty and could render the firearm unsafe.



# WARNINGS

**SIG SAUER**

## 3.0 ALTERATIONS AND REPLACEMENT PARTS

Do not attempt to disassemble a SIG SAUER firearm beyond the point explained in the Operator's Manual. Disassembly beyond the instructions in the Operator's Manual is restricted to a certified SIG SAUER Armorer. Failure to comply with these restrictions will void the warranty.

This SIG SAUER firearm was designed to function properly in its original condition. Unauthorized alterations can make it unsafe. Do not alter or substitute any parts or accessories not manufactured by SIG SAUER for this firearm. Warnings and instructions about the use of SIG SAUER replacement parts, assemblies, and accessories may be described in instructions accompanying the specific products. Read and carefully follow those instructions. Failure to comply may result in serious injury or death to the operator and/or others. The use of aftermarket replacement parts is unauthorized and, in some instances, could alter the function of the firearm.



# WARNINGS

## 3.1 ACCESSORIES

It is the responsibility of the operator to ensure all accessories are compatible with the firearm and do not interfere with the safe operation and handling of the firearm.

### 3.1.1 HOLSTERS

A properly designed holster protects the trigger from being contacted inadvertently when the firearm is holstered.

- Make sure the holster is designed specifically to accept the specific accessories installed on the firearm. Firearms equipped with a tactical light may have large openings to accommodate the bezel of the light, rendering the trigger area of the holstered firearm accessible to foreign objects or fingers if a light is not installed or if the holster is not sized specifically for use with the light that is installed on the firearm.
- Ensure the holster will protect the pistol while seated in a vehicle from surrounding features or devices in the vehicle that could interfere with the safe carry of the pistol. For example, entering and exiting the vehicle without the seat belts becoming snagged on the firearm or the holster.

Read and follow all warnings and instructions that are provided by the holster manufacturer before using. Failure to follow the instructions may result in serious injury or death to the operator and/or others.



# WARNINGS

**SIG SAUER**

## 3.2 TRANSPORTING

When transporting a firearm, be sure the firearm is unloaded and cleared of all ammunition. It is the responsibility of the operator to know the laws of different states when traveling with a firearm.

## 3.3 STORAGE

Safe and secure storage is an important responsibility. The only safe way to store a firearm is unloaded, cleared of all ammunition, and locked in a secure place inaccessible to children or unauthorized persons.

## 3.4 CHAMBER SAFETY FLAG

Every SIG SAUER firearm is shipped with a chamber safety flag. When installed, the chamber safety flag prevents the chambering of a round and provides a readily visible indication that the firearm's chamber is empty. The chamber safety flag is to be placed in the firearm's chamber at all times when the firearm is not in use. Many public ranges require chamber safety flags be installed when the firing line is cold.



# WARNINGS

## 3.5 LIABILITY

PISTOLS and RIFLES are classified as FIREARMS and are sold by SIG SAUER with the specific understanding that SIG SAUER shall not be responsible in any manner whatsoever for malfunctioning of the firearm, physical injury, or property damage resulting in whole or in part from:

- Criminal or negligent discharge
- Improper, careless, or abusive handling
- Unauthorized modifications or parts replacement
- Defective, improper, hand-loaded, or reloaded ammunition
- Corrosion
- Neglect
- Other influences beyond our direct and immediate control

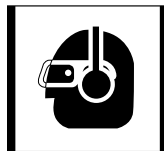
This limitation applies regardless of whether liability is asserted on the basis of contract, negligence, or strict liability (including any failure to warn). Under no circumstance shall SIG SAUER, Inc., be liable for incidental or consequential damages such as loss of use of property, commercial loss, and loss of earnings or profits.



# WARNINGS

**SIG SAUER**

## 4.0 EYE AND EAR PROTECTION



Always wear safety glasses that meet the requirements of American National Standards Institute (ANSI) z87.1 or European Standard (EN)166:2001 and ear plugs and “ earmuff ” type protectors whenever shooting. Always make certain that persons close are similarly protected. Unprotected eyes may be injured by powder, gas, carbon residue, lubricant, metallic particles, or similar debris that may emanate occasionally from any firearm in normal use. Without ear protection, repeated exposure to shooting noise may lead to cumulative, permanent hearing loss.

## 5.0 AMMUNITION

Use only high-quality, original, factory-manufactured ammunition. Do not use cartridges that are dirty, wet, corroded, bent, or damaged. A damaged or deformed cartridge may impede chambering or cause the cartridge case to burst upon firing. Do not oil cartridges. Lubricant or other foreign matter on cartridges can potentially cause dangerous ammunition malfunctions. Some highly penetrative lubricants can also migrate inside cartridge cases and cause deterioration of the propellant powder; on firing, the powder might not ignite. If only the primer ignites, there is danger that the bullet may become lodged in the barrel. Only use ammunition of the caliber for which the firearm is chambered.

The proper caliber is permanently engraved on the firearm’s barrel.



# WARNINGS

The use of reloaded, hand-loaded (re-manufactured), or other nonstandard ammunition voids all warranties. Reloading is a science, and improperly loaded ammunition can cause severe damage to the firearm and may result in serious injury or death to the operator and/or others.

Always use ammunition that complies with the industry performance standards established by the Sporting Arms and Ammunition Manufacturers' Institute, Inc. (SAAMI) or ammunition manufactured to U.S. military specifications.

SIG SAUER, Inc., specifically disclaims responsibility for any damage or injury whatsoever occurring in connection with, or as a result of, the use of any SIG SAUER firearm of faulty, nonstandard, hand-loaded (reloaded) ammunition, or cartridges other than those for which the firearm was originally chambered. Excessive pressure inside the chamber or barrel while firing a firearm may cause severe damage and serious injury or death to the shooter or to others may occur.



**WARNING: CANCER AND REPRODUCTIVE HARM—[www.P65warnings.ca.gov](http://www.P65warnings.ca.gov)**



DISCHARGING FIREARMS IN POORLY VENTILATED AREAS, CLEANING FIREARMS, OR HANDLING AMMUNITION MAY RESULT IN EXPOSURE TO LEAD AND OTHER SUBSTANCES KNOWN TO THE STATE OF CALIFORNIA TO CAUSE BIRTH DEFECTS, REPRODUCTIVE HARM, AND OTHER SERIOUS PHYSICAL INJURY. MAINTAIN ADEQUATE VENTILATION AT ALL TIMES. WASH HANDS THOROUGHLY AFTER EXPOSURE. SHOOTING OR CLEANING FIREARMS MAY EXPOSE OPERATORS TO LEAD.



# WARNINGS

**SIG SAUER**

## 6.0 LOCKING DEVICES



All SIG SAUER firearms are shipped with a key-operated locking device or a lockable case.

Never install the locking device inside the trigger guard or in any way that makes it possible to pull the trigger! Do not leave the keys in the lock.

All firearm owners are responsible for secure storage of any firearm.

ALWAYS refer to the locking device's manufacturer directions for installation and removal of the device.



# WARNINGS

## 7.0 SAFETY INFORMATION

Do not practice loading or firing any firearm with live ammunition until the Operator's Manual has been read and understood.

Seek supervised instruction for any additional information.

The SIG SAUER Academy provides all levels of firearms safety and skill training.

For more information contact:



sigsaueracademy.com • (603) 610-3400  
Epping, New Hampshire

**SAFETY MUST BE THE FIRST AND CONSTANT CONSIDERATION OF EVERY PERSON WHO HANDLES FIREARMS AND AMMUNITION.**

For more information about safety, responsible firearms ownership, and shooting sports, contact:  
National Rifle Association (NRA) of America  
11250 Waples Mill Road, Fairfax, VA 22030-7400 • 1-800-672-3888  
nra.com

## Contents

1.0 Safety Warnings . . . . .	2
2.0 Handling . . . . .	4
2.1 SAfety Mechanisms . . . . .	4
2.1.1 Basic Rules of Safe Firearms Handling. . . . .	6
2.1 Abusive Handling . . . . .	8
3.0 Alterations and Replacement Parts . . . . .	9
3.1 Accessories . . . . .	10
3.1.1 Holsters . . . . .	10
3.2 Transporting . . . . .	11
3.3 Storage . . . . .	11
3.4 Chamber Safety Flag . . . . .	11
3.5 Liability. . . . .	12
4.0 Eye and Ear Protection. . . . .	13
5.0 Ammunition. . . . .	13
6.0 Locking devices . . . . .	15
7.0 Safety Information . . . . .	16
8.0 Mechanical Characteristics. . . . .	21
8.1 Description of Firearm . . . . .	21
8.2 Main Components and Operator Controls. . . . .	22
8.3 Principal Safety Features . . . . .	24
9.0 Handling . . . . .	25
9.1 Preparation Instructions . . . . .	25
9.2 Manual Safety . . . . .	26
9.3 Magazine Disconnect Mechanism—Equipped Pistols . . . . .	27
9.4 Loading the Magazine . . . . .	28



9.5 Loading the Pistol . . . . .	30
9.5.1 Reloading During Firing . . . . .	34
9.6 Firing . . . . .	37
9.7 Unloading and Clearing the Pistol . . . . .	39
9.7.1 Unloading the Pistol (Magazine Empty, Slide Open) . . . . .	40
9.7.2 Unloading the Pistol (Magazine Not Empty) . . . . .	42
10.0 User-Level Authorized Preventative Maintenance . . . . .	45
10.1 Pistol Disassembly . . . . .	45
10.2 Cleaning the Pistol . . . . .	47
10.2.1 Slide Assembly . . . . .	48
10.2.2 Frame Assembly . . . . .	49
10.2.3 Barrel and Recoil Spring . . . . .	50
10.3 Pistol Assembly . . . . .	51
11.0 Function Check . . . . .	53
11.1 Dry Firing . . . . .	55
12.0 Magazine . . . . .	58
12.1 Disassembly . . . . .	58
12.2 Cleaning . . . . .	61
12.3 Magazine Assembly . . . . .	61
13.0 Optional Configurations and Parts . . . . .	64
13.1 Magazine Catch / Release Button . . . . .	64
13.1.1 Removal . . . . .	64
13.1.2 Install . . . . .	66
13.2 Exchanging the Trigger Shoe . . . . .	68
13.3 Compensator . . . . .	71
13.3.1 Removal . . . . .	71
13.3.2 Cleaning . . . . .	73

13.3.3 Install . . . . .	74
13.4 Thread Protector and Adapters . . . . .	76
14.0 Sights . . . . .	79
14.1 Rear Sight Adjustments . . . . .	80
14.1.1 Elevation . . . . .	80
14.1.2 Windage . . . . .	81
14.2 Replacing the Fiber Optic Lines in the Sights . . . . .	82
14.2.1 Front Sight . . . . .	83
14.2.1 Rear Sight . . . . .	88
14.3 Rear Sight options . . . . .	90
14.3.1 Rear Sight Plate . . . . .	90
14.3.2 Slide Racker (Comp Slide Only) . . . . .	92
14.3.3 ROMEOZero . . . . .	94
15.0 P322 Parts Diagrams . . . . .	96
15.1 Slides . . . . .	96
15.1.1 Standard Slide . . . . .	96
15.1.2 Slide With ROMEOZero . . . . .	97
15.1.3 Compensated Slide . . . . .	98
15.2 Frames . . . . .	99
15.2.1 Standard Frame and Grip . . . . .	99
15.2.2 Compensated Frame and Grip . . . . .	100
16.0 Storage and Transportation . . . . .	101
17.0 Replacement Parts Policy . . . . .	103
18.0 Troubleshooting Guide . . . . .	105
18.1 Stoppages . . . . .	105
18.2 Obstructed Bore . . . . .	106
18.3 Cook-off . . . . .	107



18.4 General Stoppages . . . . .	108
18.5 Minimizing Stoppages . . . . .	110
19.0 Factory Repair of the Firearm. . . . .	111
19.1 Returning Firearms for Repair . . . . .	112
SIG SAUER Infinite Guarantee™ . . . . .	113

## 8.0 MECHANICAL CHARACTERISTICS

### 8.1 DESCRIPTION OF FIREARM

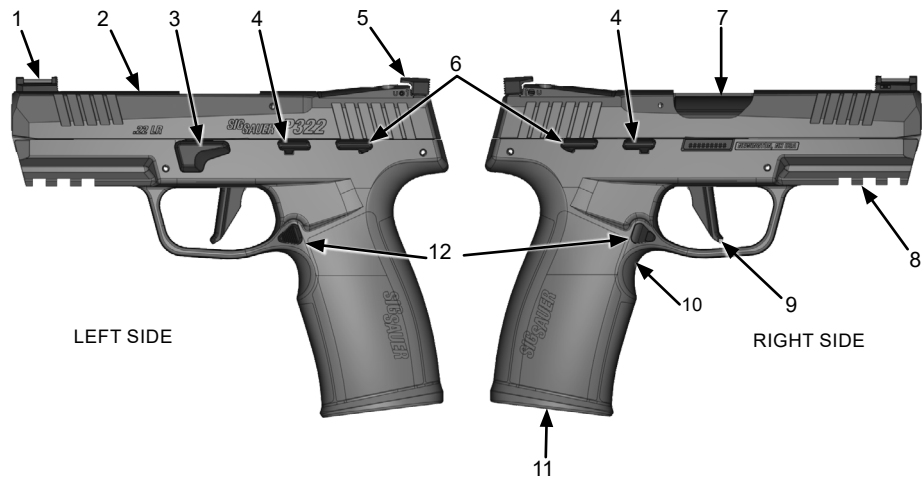
The SIG SAUER P322 pistol is a modern handgun that incorporates the latest technical advances in firearm design. It is a fixed-barrel, blow-back-operated pistol with semi-automatic reloading and an internal hammer. Firing takes place with each pull of the trigger, and the slide remains open after the last cartridge has been fired.

For further details on SIG SAUER products, SIG SAUER Academy, the SIG Experience Center, Special Programs, and additional support, please scan the QR code below to visit [sigsauer.com](http://sigsauer.com).





## 8.2 MAIN COMPONENTS AND OPERATOR CONTROLS



1	Front Sight	A visual aid for proper alignment of the pistol.
2	Slide	Chambers and ejects rounds, cocks the internal hammer, provides a locking mechanism, houses firing and safety components, and manages recoil.
3	Takedown Lever	Allows users to safely disassemble the firearm for cleaning, maintenance, and inspection.
4	Slide Catch/Release Lever	Holds and releases the slide and aids in reloading.
5	Adjustable Rear Sight	A visual aid for proper alignment of the pistol.
6	Ambidextrous Manual Safety Lever	Prevents accidental firing, enhances safe carrying, and provides user control when shooting.
7	Barrel	Guides the projectile from the chamber to the muzzle when the pistol is fired.
8	Rail	Provides a mounting platform for accessories and attachments to enhance the firearm's functionality.
9	Trigger	When pulled, actuates the internal components to fire the pistol.
10	Grip Module	Houses trigger, safety components, and magazine.
11	Magazine	Holds and positions cartridges in place for feeding.
12	Ambidextrous Magazine Catch/Release Button	Holds and releases the magazine in the grip module.



### 8.3 PRINCIPAL SAFETY FEATURES

This pistol contains the following safety features:

- An external manual safety.
- A firing pin safety to block the firing pin unless the trigger is pulled.
- The hammer safety intercept notch prevents the hammer from contacting the firing pin, unless the trigger is pulled.
- The battery safety prevents the hammer from striking the firing pin when the slide is not completely closed.
- The pistol cannot be disassembled with a magazine inserted.
- Some models are equipped with a magazine disconnect mechanism, which prevents the trigger from being pulled without a magazine inserted.



### 9.0 HANDLING

#### 9.1 PREPARATION INSTRUCTIONS



#### **WARNING MAINTENANCE**

**PRIOR TO PERFORMING ANY MAINTENANCE ON THE FIREARM, READ AND UNDERSTAND THE OPERATOR'S MANUAL. ENSURE THAT THE FIREARM IS UNLOADED, CLEARED, AND THE MAGAZINE IS REMOVED. SAFETY GLASSES SHOULD BE WORN WHENEVER DISASSEMBLING, CLEANING, INSPECTING, OR ASSEMBLING A FIREARM. FAILURE TO COMPLY MAY RESULT IN SERIOUS INJURY OR DEATH TO THE USER OR BYSTANDERS.**

Perform an initial cleaning and lubrication of the pistol after unpacking it. Any fouling present is from final range firing at the factory prior to shipping. Refer to section **10.2 Cleaning the Pistol** on page 47 for instructions on cleaning the pistol.



## 9.2 MANUAL SAFETY

### CAUTION

PARTIALLY CYCLING THE SLIDE MAY POSITION THE SEAR IN THE SAFETY INTERCEPT NOTCH OF THE HAMMER. IF THE MANUAL SAFETY IS ENGAGED IN THIS CONDITION, THE SLIDE WILL NOT FUNCTION PROPERLY. TO REMEDY THIS CONDITION, DISENGAGE THE MANUAL SAFETY, PULL THE SLIDE COMPLETELY TO THE REAR, THEN RE-ENGAGE MANUAL SAFETY.

The manual safety is designed to block trigger bar movement and can only be engaged with the hammer cocked (ready to fire).

To engage the manual safety, rotate the manual safety lever upward. The manual safety is ambidextrous. Pressing up on the lever from either side will rotate the opposite lever upward, engaging the manual safety. The slide can move with the manual safety engaged.



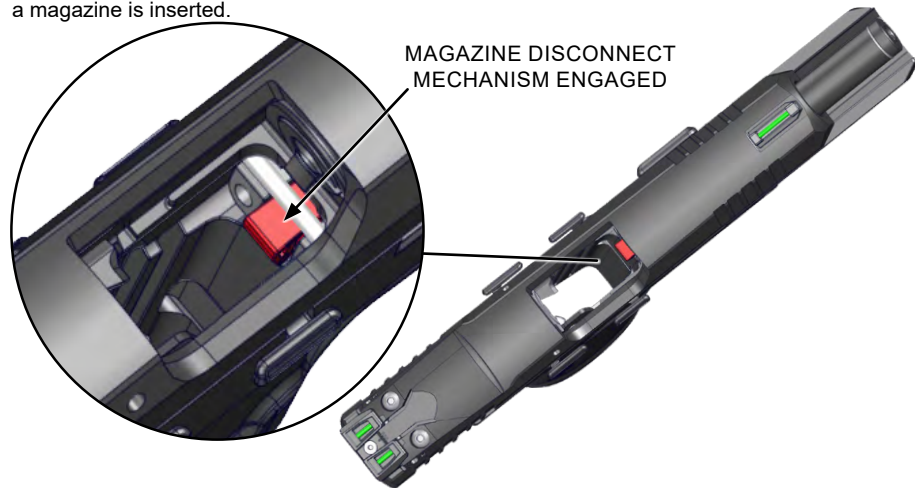
MANUAL SAFETY ENGAGED



MANUAL SAFETY DISENGAGED

## 9.3 MAGAZINE DISCONNECT MECHANISM-EQUIPPED PISTOLS

Some models of the SIG P322 are offered with a magazine disconnect mechanism which mechanically blocks the movement of the trigger, preventing the trigger from being pulled unless a magazine is inserted.



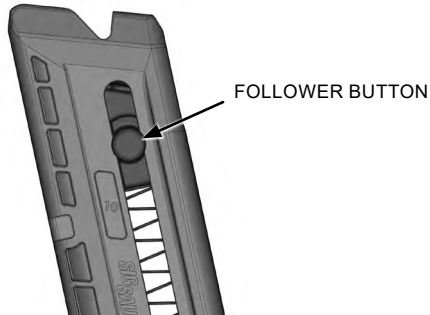


## 9.4 LOADING THE MAGAZINE

### CAUTION

DO NOT ATTEMPT TO INSERT MORE CARTRIDGES THAN THE MAGAZINE'S DESIGNED CAPACITY. ENSURE THAT THE MAGAZINE AND AMMUNITION ARE THE PROPER TYPE AND CALIBER FOR THE PISTOL. OVERLOADING THE MAGAZINE OR LOADING THE WRONG AMMUNITION COULD CAUSE STOPPAGES AND/OR DAMAGE TO THE MAGAZINE OR FIREARM.

1. Push down on the follower button to compress the magazine spring far enough to load one cartridge at a time.



2. Push the cartridge to the rear and under the magazine feed lips. Ensure that the projectile is inserted rear end first.



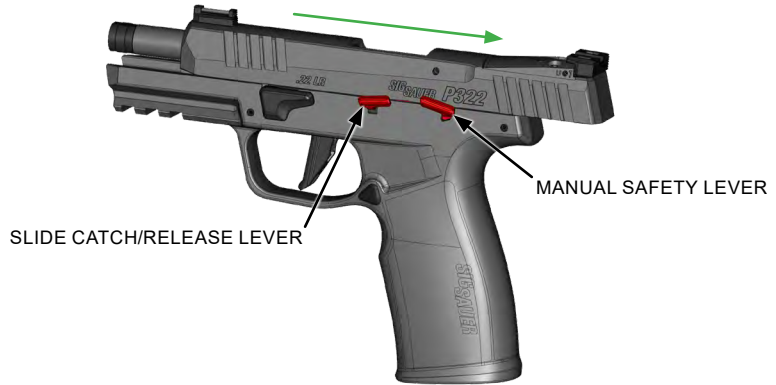
3. Repeat until the magazine contains the desired number of cartridges or is full.



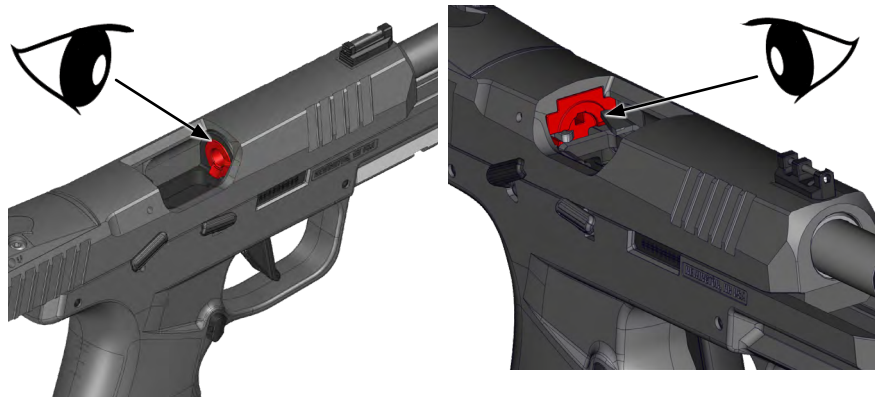


### 9.5 LOADING THE PISTOL

1. Point the pistol in a safe direction.
2. Fully retract the slide.
3. Push up on the slide catch/release lever to lock the slide to the rear.
4. Push up on the manual safety lever.



5. Visually and physically inspect the chamber, breech face, and magazine well to ensure it is clear of any debris.



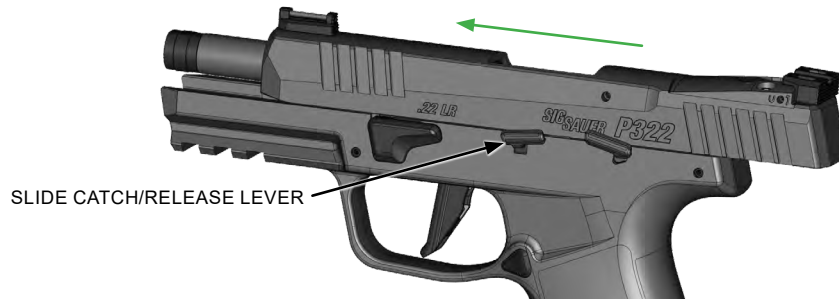


6. Insert a loaded magazine, pushing it up into the magazine well until it locks in place. A clicking sound should be heard when the magazine is locked in place.



7. Chamber a cartridge by releasing the slide, either by:

- Pressing down on the slide catch/release lever.
- Pulling back on the slide, then releasing. Do not ride the slide forward. Failure to properly complete this step may induce a stoppage.



**WARNING LOADED PISTOL**



**THE PISTOL IS NOW LOADED AND READY TO FIRE**



### 9.5.1 RELOADING DURING FIRING

When the last cartridge in the magazine is fired, the slide should lock back in the open position by the slide catch/release lever (if working properly).

1. Push up on the manual safety lever.
2. Press the magazine catch/release button to release the empty magazine.



3. Insert a loaded magazine, pushing it up into the magazine well until it locks in place. A clicking sound should be heard when the magazine is locked in place.





4. Chamber a cartridge by releasing the slide, either by:
- Pressing down on the slide catch/release lever.
  - Pulling back on the slide, then releasing. Do not ride the slide forward. Failure to properly complete this step may induce a stoppage.



 **WARNING LOADED PISTOL** 

**THE PISTOL IS NOW LOADED AND READY TO FIRE**

## 9.6 FIRING

 **WARNING LOADED PISTOL** 

**KEEP FINGERS OUT OF TRIGGER GUARD AND OFF THE TRIGGER UNTIL READY TO FIRE. ALWAYS ENSURE FIREARM IS POINTED IN A SAFE DIRECTION. FAILURE TO COMPLY MAY RESULT IN SERIOUS INJURY OR DEATH.**

 **WARNING BARREL**

**BEFORE LOADING, ALWAYS CLEAN ALL GREASE AND OIL FROM THE BORE AND CHAMBER AND VERIFY THAT NO OBSTRUCTION IS IN THE BARREL. ANY FOREIGN MATTER IN THE BARREL COULD RESULT IN A BULGED OR BURST BARREL OR OTHER DAMAGE TO THE FIREARM AND COULD CAUSE SERIOUS INJURY.**

 **WARNING SAFETY** 

**THE PISTOL SLIDE OPENS AND SHUTS QUICKLY WHILE FIRING. KEEP FACE AND HANDS AWAY FROM IT. HOT BRASS AND POWDER GAS IS EJECTED QUICKLY AND CAN BURN THE USER OR OTHERS NEARBY. ALWAYS WEAR SAFETY GLASSES AND HEARING PROTECTION TO PREVENT INJURY. NEVER ALLOW OTHERS TO STAND WHERE THEY MAY BE STRUCK BY AN EJECTED CARTRIDGE CASE.**



1. Aim the pistol at a safe target and press down on the manual safety lever to disengage the manual safety.
2. Pull the trigger to fire.
3. Keep the pistol aimed at the target until done shooting.
4. Press up on the manual safety lever.
5. To unload and clear the firearm, proceed to section **9.7 Unloading and Clearing the Pistol on page 39**.

## 9.7 UNLOADING AND CLEARING THE PISTOL



### WARNING UNLOAD/CLEAR



**FAILURE TO ENSURE THE FIREARM IS UNLOADED AND CLEARED COULD RESULT IN UNINTENTIONAL DISCHARGE, CAUSING SERIOUS INJURY, DEATH, OR PROPERTY DAMAGE. REMOVING THE MAGAZINE FROM THE FIREARM DOES NOT PREVENT A CHAMBERED ROUND FROM BEING FIRED.**

When the chamber has a live cartridge in it, it will discharge if the safety is disengaged and the trigger is pulled. Always completely unload and clear the pistol when it is not in use.

1. Engage the manual safety.
2. Point the muzzle in a safe direction.
3. Release the magazine.
4. Lock the slide rearward to open the chamber.
5. Visually verify the chamber and barrel are clear of any cartridges.
6. Check the firearm twice, both visually and physically.



### 9.7.1 UNLOADING THE PISTOL (MAGAZINE EMPTY, SLIDE OPEN)

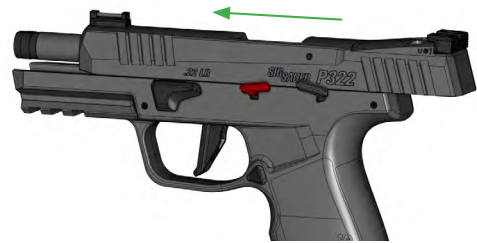
1. Keep the muzzle pointed in a safe direction.
2. Press up on the manual safety lever.
3. Press the magazine catch/release button and remove the magazine.



4. Visually/physically check the chamber, breech face, and magazine well to ensure that the pistol is completely free of ammunition.



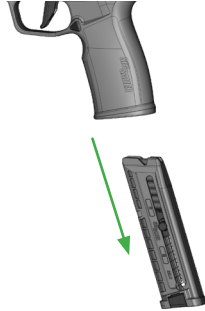
5. Press the slide catch/release lever down to release the slide.





### 9.7.2 UNLOADING THE PISTOL (MAGAZINE NOT EMPTY)

1. Keep the muzzle pointed in a safe direction.
2. Push up on the manual safety lever.
3. Press the magazine catch/release button and remove the magazine.

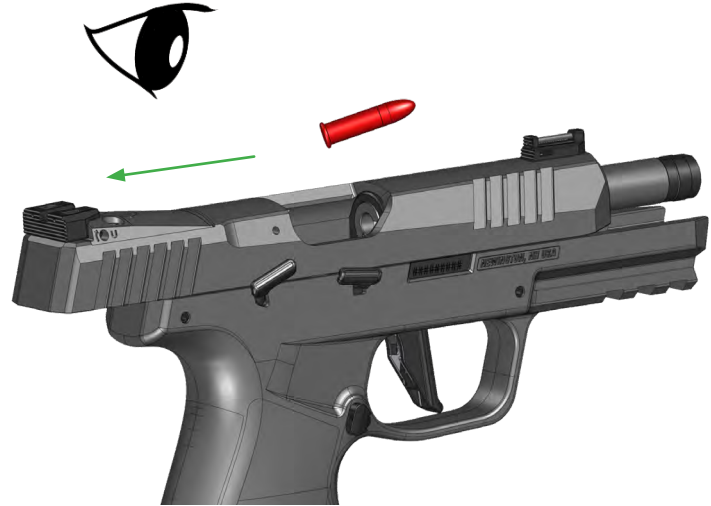


**WARNING LOADED PISTOL**



**THE PISTOL STILL HAS A LIVE CARTRIDGE CHAMBERED AND CAN BE FIRED IF THE MANUAL SAFETY IS DISENGAGED AND THE TRIGGER IS PULLED.**

4. Pull the slide completely to the rear while watching for the ejection of a cartridge. Push up on the slide catch/release lever, locking the slide open.





- 5. Visually/physically check the chamber, breech face, and magazine well to ensure that the pistol is completely free of ammunition. This state is a cleared firearm.



- 6. Press the slide catch/release lever down to release the slide.

## 10.0 USER-LEVEL AUTHORIZED PREVENTATIVE MAINTENANCE



### WARNING UNLOAD/CLEAR



FAILURE TO ENSURE THE FIREARM IS UNLOADED AND CLEARED COULD RESULT IN UNINTENTIONAL DISCHARGE, CAUSING SERIOUS INJURY, DEATH, OR PROPERTY DAMAGE. REMOVING THE MAGAZINE FROM THE FIREARM DOES NOT PREVENT A CHAMBERED ROUND FROM BEING FIRED.

### 10.1 PISTOL DISASSEMBLY

1. Unload and clear the pistol of ammunition. See section **9.7 Unloading and Clearing the Pistol on page 39**.  
Ensure the barrel thread protector is installed on the barrel; it will retain the recoil spring and barrel bushing when the slide is removed. If the slide has a compensator, refer to section **13.3 Compensator on page 71** for removal instructions.
2. Rotate the takedown lever counterclockwise 90°.





3. Pull the slide back and then lift it off of the frame rails.



4. Guide the slide forward and off of the barrel to remove.

**CAUTION**

FURTHER DISASSEMBLY OF THE PISTOL WILL VOID THE WARRANTY.

**10.2 CLEANING THE PISTOL****WARNING CLEANING**

**READ AND FOLLOW THE MANUFACTURER'S WARNINGS BEFORE USING SOLVENTS OR CLEANERS. USE IN A WELL-VENTILATED AREA. WEAR EYE PROTECTION.**

**CAUTION**

**NEVER CLEAN THE BARREL FROM THE MUZZLE END. DO NOT USE A STEEL WIRE BRUSH AS IT WILL DAMAGE THE SMOOTH SURFACE OF THE BARREL. USE A SUITABLE CLEANING ROD AND A BRONZE BRUSH OF THE CORRECT CALIBER. SOLVENTS CAN BE HARMFUL TO THE SURFACE FINISH OF THE PISTOL. AVOID OVER-LUBRICATION OF COMPONENTS.**



#### MATERIALS REQUIRED

- Cleaning patches
- Rags
- Bore brush of the proper caliber
- Cleaning rod
- CLP<sup>®</sup> (Cleaning, Lubricant, Preservative)
- Low Temperature Lubricant when applicable
- Cleaning Brush

The following instructions are for normal environmental conditions. Clean and lube at a minimum of every 500 cartridges.

#### 10.2.1 SLIDE ASSEMBLY

1. Remove all of the old lubricant before reapplying.
2. Clean the slide assembly with a cloth. A soft brush and CLP<sup>®</sup> can be used to clean excessive dirt and carbon buildup. Ensure the extractor, rail slots, and breech face are free of dirt and residue.
3. Apply a light coat of CLP<sup>®</sup> to the frame rail slots of the slide.
4. Lightly oil all external parts.

#### 10.2.2 FRAME ASSEMBLY

1. Wipe the frame assembly with a cloth.
2. Use cotton swabs or nylon brush to clean hard to reach areas. Pay special attention to the frame rails.
3. Lubricate the frame rails with a light coat of CLP<sup>®</sup>.
4. Apply CLP<sup>®</sup> to accessible functioning parts.
5. Clean the magazine well of any dirt, dust, or residue with a cloth.



### 10.2.3 BARREL AND RECOIL SPRING

1. Soak a patch with CLP<sup>®</sup> and push it through the bore from the chamber end and out past the muzzle.
2. Allow the CLP<sup>®</sup> to soak for a while to loosen residue and soften carbon deposits.
3. Wipe the exterior of the barrel with a cloth soaked in CLP<sup>®</sup>.
4. Repeat step #1.
5. Use the bore brush and a cleaning rod to scrub heavy deposits from the bore.
6. Repeat step #1.
7. Push dry patches through the bore until they come out clean.
8. Clean the recoil spring with a cloth lightly coated in CLP<sup>®</sup>.
9. Lightly oil the bore and chamber if the pistol is to be stored for more than 90 days.
10. Always remove any lubricant from the bore prior to firing the pistol.

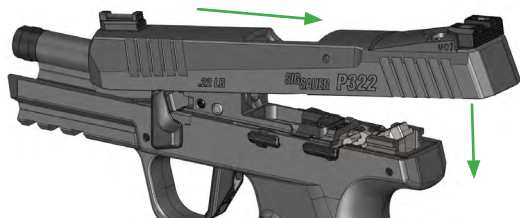
### 10.3 PISTOL ASSEMBLY

1. Verify that the pistol is clear of all foreign matter and the takedown safety lever is in the correct position (UP).
2. Verify that the hammer is cocked. If the hammer is not cocked, press the hammer back and down until it clicks into place.
3. Install the slide onto the barrel as far back as it will go.





4. Maintain pressure to the rear of the slide and lower it onto the rails.



5. Once aligned on the rails, release the slide forward.
6. Rotate the takedown lever clockwise 90°.



## 11.0 FUNCTION CHECK

A function check is performed on the assembled pistol to verify its proper function. It should be performed after the completion of repairs and after each cleaning and assembly of the pistol.



**WARNING UNLOAD/CLEAR**



**FAILURE TO ENSURE THE FIREARM IS UNLOADED AND CLEARED COULD RESULT IN UNINTENTIONAL DISCHARGE, CAUSING SERIOUS INJURY, DEATH, OR PROPERTY DAMAGE. REMOVING THE MAGAZINE FROM THE FIREARM DOES NOT PREVENT A CHAMBERED ROUND FROM BEING FIRED.**

**IF THE FIREARM FAILS TO COMPLETE THE FUNCTION CHECK, DO NOT USE THE FIREARM. CONTACT CUSTOMER SERVICE.**

1. Ensure the magazine is removed and the pistol is unloaded and cleared. See section **9.7 Unloading and Clearing the Pistol on page 39**.
2. Insert an empty magazine, pushing it up into the magazine well. A clicking sound should be heard when the magazine is locked in place. Pull the slide completely to the rear. The magazine follower should push the slide catch/release lever up, locking the slide to the rear.
3. Press the magazine catch/release button to release the magazine. The magazine must fall free of the pistol under its own weight.
4. Press the slide catch/release lever down to release the slide forward.

**IF THE PISTOL IS NOT EQUIPPED WITH A MAGAZINE DISCONNECT MECHANISM, SKIP TO STEP 10.**



5. Disengage the manual safety.
6. With the pistol pointed in a safe direction, pull the trigger. Nothing should happen.
7. Release the trigger.
8. Insert an empty magazine.
9. Pull the trigger. The hammer should release with a loud click.
10. Pull the slide fully to the rear and release to cock the hammer.
11. Push up on the manual safety lever to engage the safety.
12. With the pistol pointed in a safe direction, pull the trigger. The hammer should NOT be released.
13. Release the trigger.
14. Disengage the manual safety.
15. Pull the trigger to the rear and HOLD. The hammer should release with a loud click.
16. With the trigger still pulled to the rear, pull the slide fully to the rear and release.
17. Release trigger. The trigger should reset with a light click.
18. Pull the trigger. The hammer should release with a loud click.
19. Pull the slide fully to the rear and release.
20. Engage the manual safety. Pull the trigger to test the manual safety one more time. The hammer should NOT be released.
21. Release the trigger. If applicable, release the magazine.

## CAUTION

NEVER USE A FIREARM OR MAGAZINE THAT SHOWS SIGNS OF DAMAGE OR FAILS A FUNCTION CHECK. VERIFY THE MAGAZINE IS THE CORRECT MODEL AND CALIBER FOR THE PISTOL. IF THE CONDITION OR FUNCTION OF THE PISTOL OR MAGAZINE IS SUSPECT, RETURN THE PISTOL OR MAGAZINE TO SIG SAUER FOR EVALUATION. ALWAYS VERIFY THE CONDITION AND FUNCTION OF THE EQUIPMENT BEFORE USE.

### 11.1 DRY FIRING



## WARNING UNLOAD/CLEAR



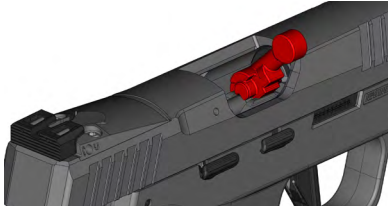
**FAILURE TO ENSURE THE FIREARM IS UNLOADED AND CLEARED COULD RESULT IN UNINTENTIONAL DISCHARGE, CAUSING SERIOUS INJURY, DEATH, OR PROPERTY DAMAGE. REMOVING THE MAGAZINE FROM THE FIREARM DOES NOT PREVENT A CHAMBERED ROUND FROM BEING FIRED.**

## CAUTION

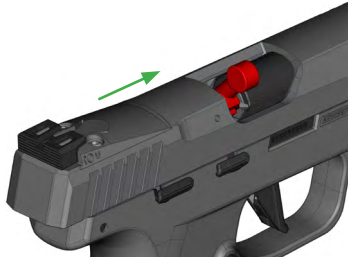
IT IS HIGHLY RECOMMENDED THAT DRY FIRING BE DONE WITH THE SUPPLIED CHAMBER SAFETY FLAG INSERTED. FAILURE TO USE THE CHAMBER SAFETY FLAG WHILE DRY FIRING CAN CAUSE UNNECESSARY WEAR ON THE FIREARM.



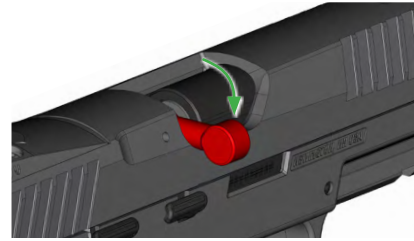
1. Lock the slide to the rear with the slide catch/release lever and insert the chamber safety flag.



2. Pull back on the slide to release and gently close it on the chamber safety flag.



3. Rotate the chamber safety flag arm about 45° clockwise to lock it into the dry firing position. It should lightly click into place.



4. Point the pistol in a safe direction and dry fire. Pull the slide back slightly to reset the hammer.



## 12.0 MAGAZINE

### 12.1 DISASSEMBLY

Disassembly of the magazine is not typically required for cleaning. Most cleaning can be done by pressing the follower and scrubbing the feed lips with a nylon brush. Repeated disassembly could result in accelerated wear on the floorplate.

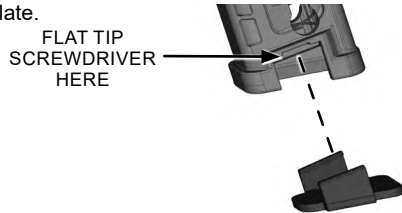


**WARNING PARTS UNDER SPRING TENSION**



**FIREARMS CONTAIN SEVERAL SPRING LOADED PARTS. WEAR EYE PROTECTION AND MAINTAIN CONTROL DURING MAINTENANCE. FAILURE TO COMPLY MAY RESULT IN INJURY.**

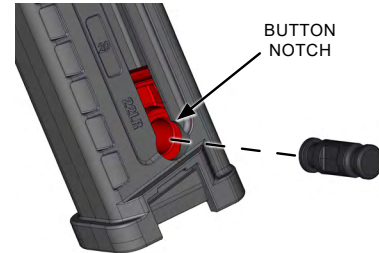
1. Using a small flat tip screwdriver or similar tool, carefully pry the flange of the floorplate from the body of the magazine. While holding it unclipped, do the same on the other side and remove the floorplate.



2. Remove the magazine spring from the bottom of the magazine tube.

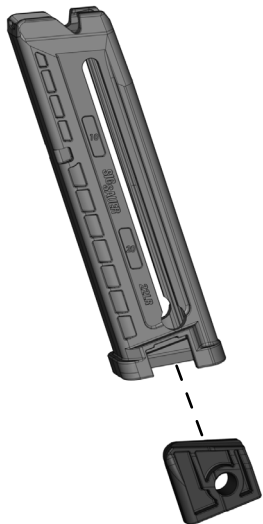


3. Lower the follower to the notch in the magazine tube.
4. Remove the follower button.





5. Remove the follower from the bottom of the magazine tube.

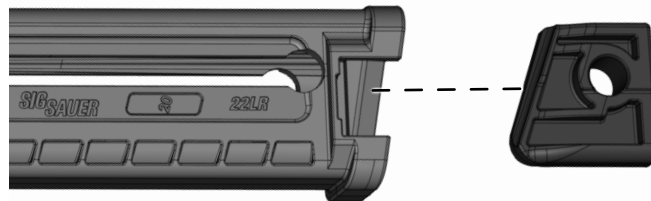


## 12.2 CLEANING

1. Wipe the magazine tube and follower with a cloth.
2. Clean the magazine tube and follower with a nylon brush and CLP.
3. Use a cloth to clean the magazine spring, floorplate, and base plate.
4. Apply a light coat of CLP to the magazine spring.

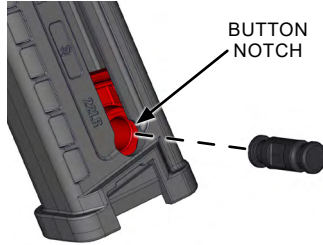
## 12.3 MAGAZINE ASSEMBLY

1. Insert the magazine follower into the magazine tube and align it with the follower button notch.

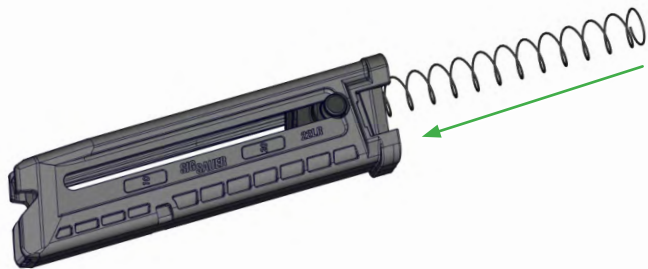




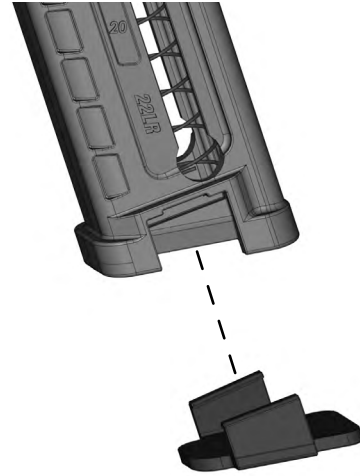
2. Insert the follower button into the notch.



3. Insert the magazine spring into the magazine tube.



4. Compress the magazine spring with the floorplate until the floorplate snaps onto the magazine tube.





## 13.0 OPTIONAL CONFIGURATIONS AND PARTS

### 13.1 MAGAZINE CATCH / RELEASE BUTTON



#### **WARNING UNLOAD/CLEAR**

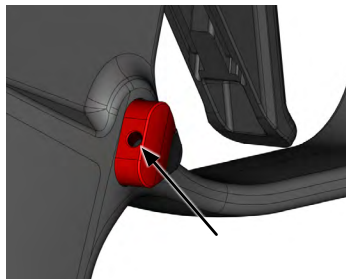


**FAILURE TO ENSURE THE FIREARM IS UNLOADED AND CLEARED COULD RESULT IN UNINTENTIONAL DISCHARGE, CAUSING SERIOUS INJURY, DEATH, OR PROPERTY DAMAGE. REMOVING THE MAGAZINE FROM THE FIREARM DOES NOT PREVENT A CHAMBERED ROUND FROM BEING FIRED.**

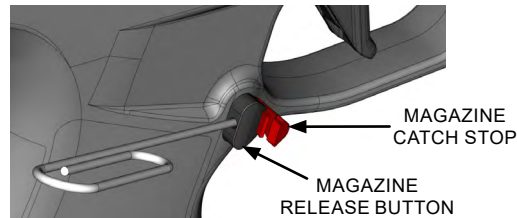
This procedure can be performed with or without the slide installed.

#### 13.1.1 REMOVAL

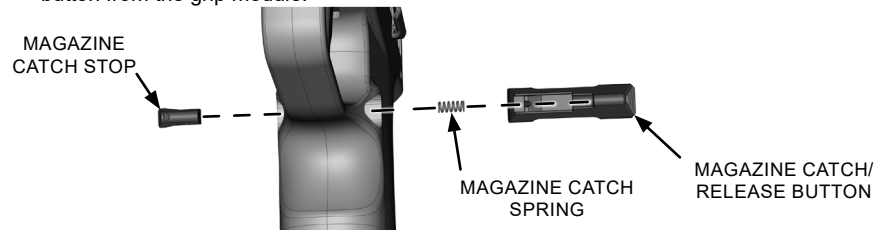
1. Ensure that the magazine is removed and the pistol is unloaded and cleared. See section **9.7 Unloading and Clearing the Pistol on page 39**.
2. Press the magazine catch/release button until the opposite side protrudes from the grip. A small hole will be visible in the back of the exposed side.



3. Press the end of a small round pin, such as a paper clip, into the hole of the magazine catch/release button. Push in with a paperclip and slide the magazine catch stop out as far as possible. Repeat until the magazine catch stop can be removed.



4. Remove the magazine catch stop, magazine catch spring, and magazine catch/release button from the grip module.





### 13.1.2 INSTALL

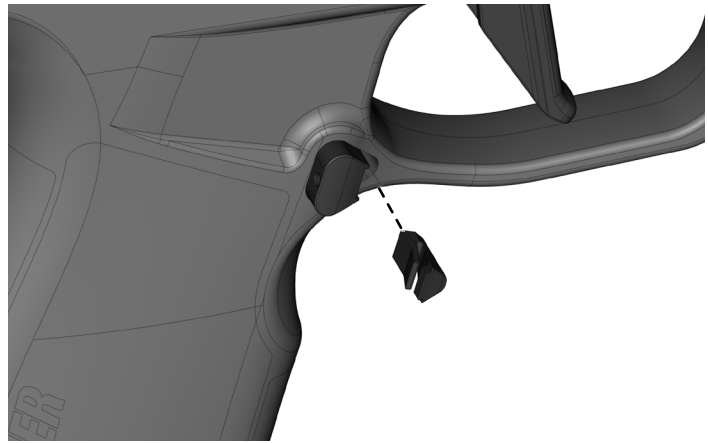
**NOTE**

Holding the pistol with the muzzle downward will aid in keeping the magazine catch/release button and spring in place for ease of installation.

1. Insert the magazine catch/release button and spring into the preferred side of the grip module and completely push the button inward.



2. Insert the magazine catch stop into the magazine catch/release button until it snaps into place.

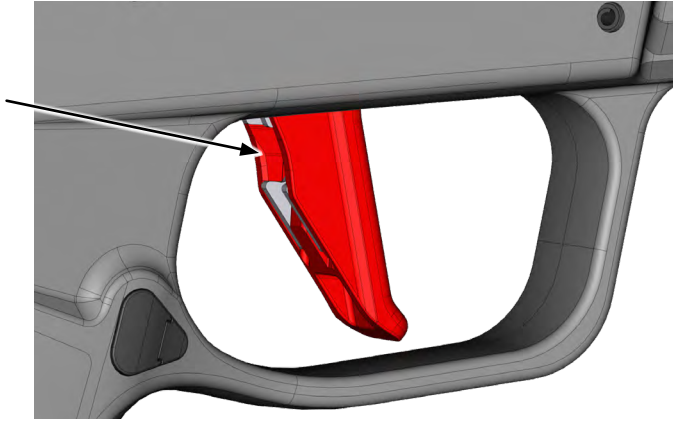




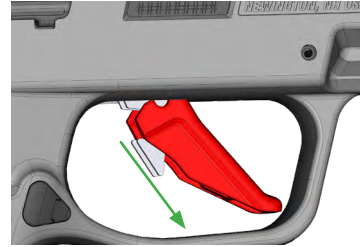
### 13.2 EXCHANGING THE TRIGGER SHOE

Ensure that the manual safety is engaged. Only change the trigger shoe with the slide removed.

1. Using a small punch or similar tool, lightly press the inside edges of the trigger shoe out and slide the trigger shoe forward and away from the metal trigger base.



2. Once the trigger shoe is loose, slide the trigger shoe down and off the trigger base.

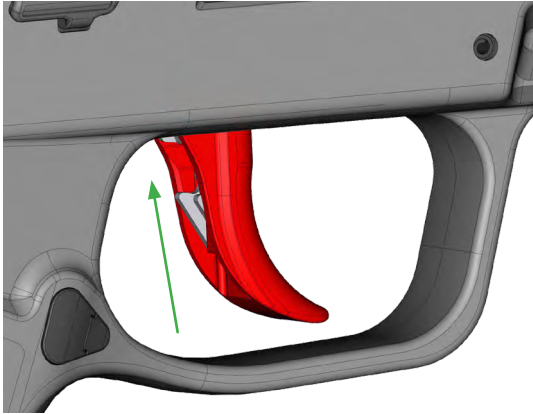


3. Insert a new trigger shoe into the trigger guard at an angle and slide it onto the trigger base.





- Slide the trigger shoe up onto the trigger base. A light click should be heard when the inside edges snap into place.

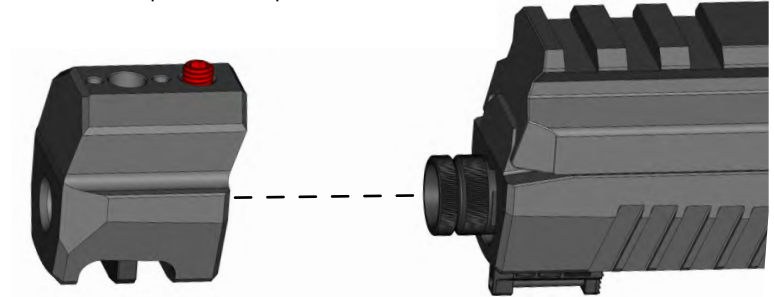


### 13.3 COMPENSATOR

Do not attempt to remove the slide without the compensator adapter or thread protector installed. The compensator, insert, and adapter should be removed and cleaned every 300 rounds to prevent excessive buildup.

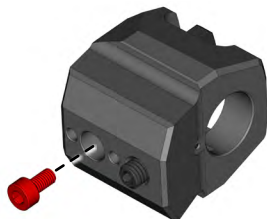
#### 13.3.1 REMOVAL

- Use a 2.5mm drive bit to loosen the compensator screw and remove the compensator from the compensator adapter.

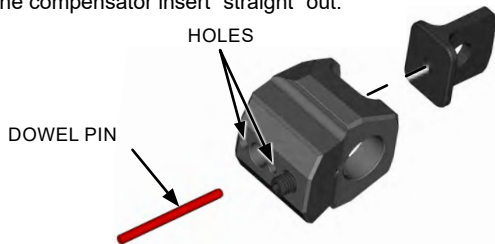




- Using a 2.5mm drive bit, remove the compensator insert screw from the bottom of the compensator.

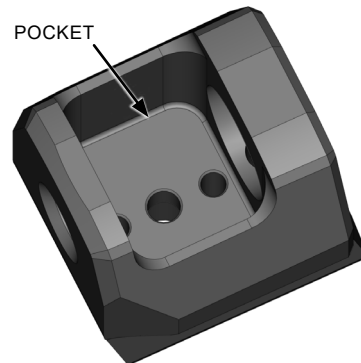


- Insert the provided dowel pin into the holes in the bottom of the compensator, alternating between the front and back holes.
- Push the compensator insert "straight" out.



### 13.3.2 CLEANING

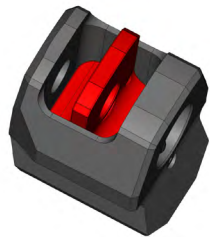
- Use a rag moistened with CLP<sup>®</sup> to clean all carbon buildup from the compensator.
- Use a wire brush to clean carbon buildup from the insert.





### 13.3.3 INSTALL

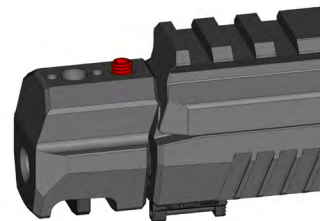
1. Place the compensator insert into the compensator.



2. Using a 2.5mm drive bit, install the insert screw in the bottom of the compensator and tighten to 20 in-lbf.



3. Place the compensator onto the compensator adapter.



4. Using a 2.5mm drive bit, tighten the compensator screw to 20 in-lbf.





### 13.4 THREAD PROTECTOR AND ADAPTERS

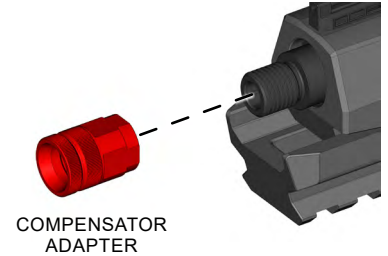
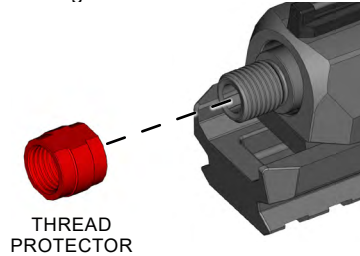
It is easier to install a thread protector or adapter with a chamber safety flag inserted into the chamber. The chamber safety flag will hold the slide back and expose the wrench flats on the thread protector or adapter.

Certain models do not have a threaded barrel and do not use a thread protector or adapter. No further disassembly of these barrels is necessary at the operator level. (Further disassembly of these barrels will void the firearm's warranty.)

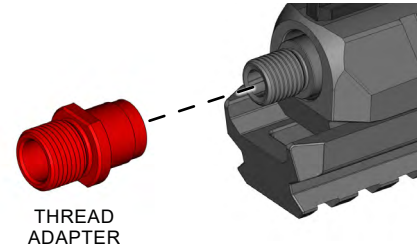
1. With the chamber safety flag inserted, secure the pistol in a vise with padded or soft jaws.



2. Using a 7/16 in. wrench, remove the thread protector or compensator adapter. The threads are right handed.

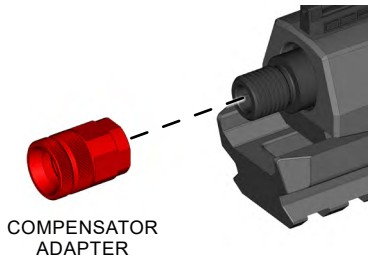
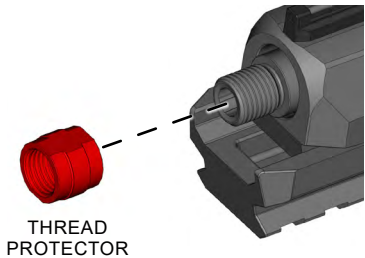


3. Using a 9/16 in. wrench, tighten the thread adapter onto the barrel and torque to 45 in-lbf.





- Using a 7/16 in. wrench, tighten the thread protector or compensator adapter onto the barrel and torque to 45 in-lbf.



## 14.0 SIGHTS

### General Information

The SIG SAUER P322 pistol is equipped with a fixed front sight and an adjustable rear sight. The sights are designed and dimensioned to ensure rapid target acquisition.

### CAUTION

**SIG SAUER SUGGESTS THAT FIXED SIGHT CORRECTIONS SHOULD BE PERFORMED ONLY BY A CERTIFIED SIG SAUER ARMORER. FAILURE TO COMPLY COULD DAMAGE THE PISTOL.**

Factory installed ROMEO electro optics sights may or may not have MOTAC™ (Motion Activated Illumination System) capabilities. Always ensure that the optic is powered off when not in use to conserve battery life.

For SIG SAUER ELECTRO-OPTICS adjustments, please see the operator's manual for the specific sight. Scan the QR code below to visit the sigsauer.com website and download operator's manuals.





## 14.1 REAR SIGHT ADJUSTMENTS

The rear sight is adjustable for both elevation and windage using the provided 1.3mm/0.50 in. hex key.

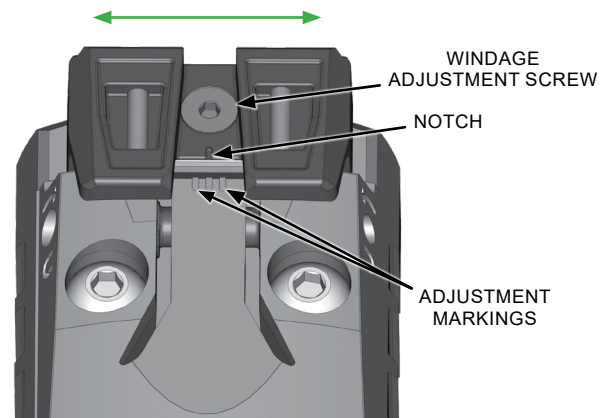
### 14.1.1 ELEVATION

Elevation is adjusted primarily by turning the hex screw on the left side counterclockwise to raise the shot group or clockwise to lower the shot group. Similar adjustments can be made on the right side using a small flat blade screwdriver. If the sight is adjusted past the maximum height setting, it will “reset” to its lowest position.



### 14.1.2 WINDAGE

Windage is adjusted from the top of the rear sight and can be adjusted left or right. To adjust for windage, loosen the top hex screw and slide the rear sight left or right. Aligning the notch in the center of the sight with the left or right markings on the sight plate will shift the point of impact 3.5 in. at 15 yards.



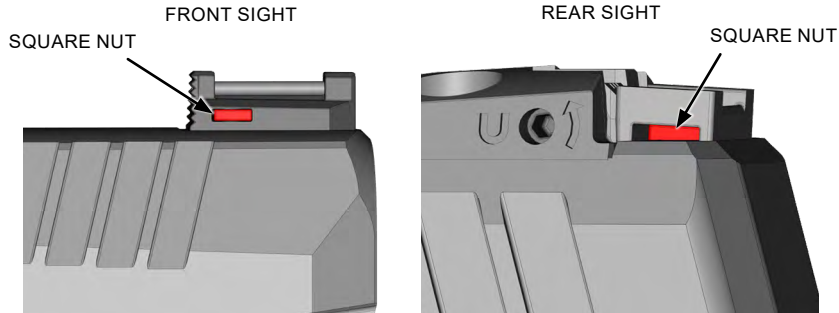


## 14.2 REPLACING THE FIBER OPTIC LINES IN THE SIGHTS

### CAUTION

USE CAUTION WHEN REMOVING AND REPLACING THE FIBER OPTIC LINE IN THE FRONT AND REAR SIGHTS. THE SCREWS, NUTS, AND COIL PIN ARE EXTREMELY SMALL AND VERY EASY TO LOSE. MANIPULATING THE SIGHTS WITH THE SCREWS REMOVED MAY CAUSE THE SQUARE NUTS TO FALL OUT. REINSTALL AS NECESSARY.

To exchange the fiber line, the slide must be removed from the grip and frame.

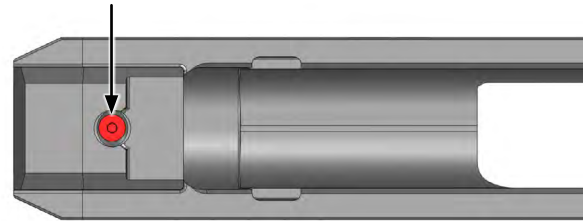


Fiber Optic Line Replacement Size		
	<i>Diameter</i>	<i>Length</i>
<i>Front</i>	0.060 in. (1.5mm)	0.560 in. (14.3mm)
<i>Rear</i>	0.060 in. (1.5mm)	0.390 in. (9.9mm)

### 14.2.1 FRONT SIGHT

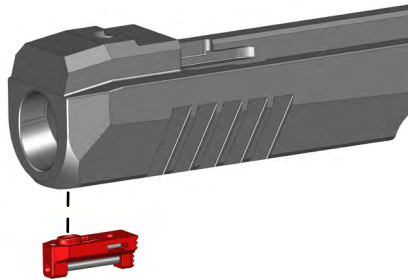
#### Removal

- Using the 1.3mm hex key, remove the screw from the underside of the slide. Hold onto the front sight as it will no longer be attached to the slide when the screw is removed.

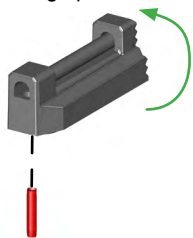




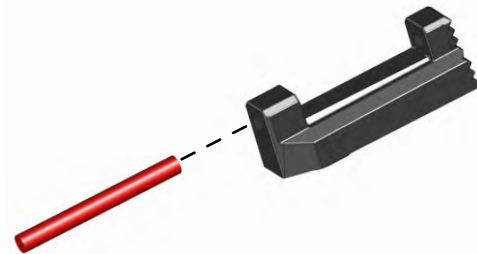
2. Remove the front sight from the slide, being careful not to lose the retaining coil pin.



3. Rotate the front sight right side facing up. The retaining coil pin should fall out.

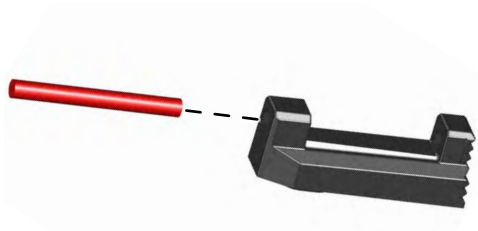


4. Remove the fiber optic line.



**Install**

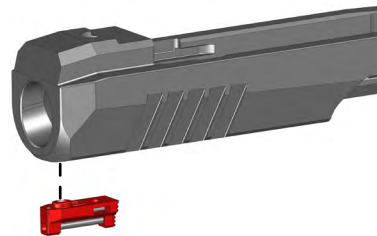
1. Install a new fiber optic line into the front sight.



2. Turn the front sight upside down and drop in the retaining coil pin.



3. With slide upside down, position the front sight in its indent in the slide and hold it in place.



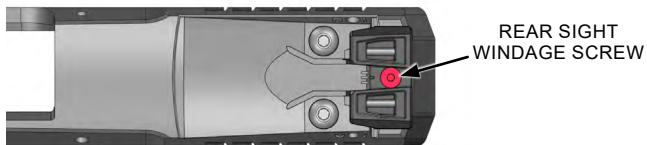
4. Hold the front sight in place and reinstall the front sight screw using the 1.3mm drive bit. Torque to 3 in-lbf.



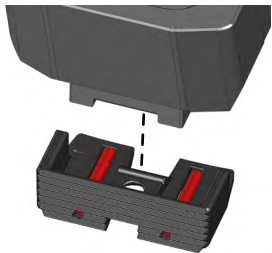
### 14.2.1 REAR SIGHT

#### Removal

1. Using the 1.3mm hex key, remove the rear sight windage screw.



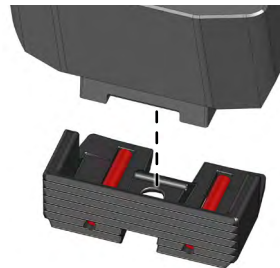
2. Hold the sight in place and flip the slide upside down. Remove the rear sight.



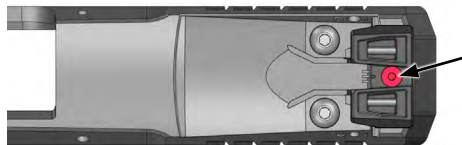
3. Remove fiber optic lines.

#### Install

1. Place new fiber optic lines into the grooves in the rear sight.
2. While holding the rear sight and slide upside down, position the rear sight and hold it in place.



3. While holding the sight and slide in place, use the 1.3mm hex key to install the rear sight windage screw and tighten to 3 in-lbf.



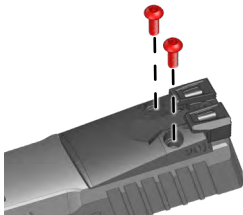


## 14.3 REAR SIGHT OPTIONS

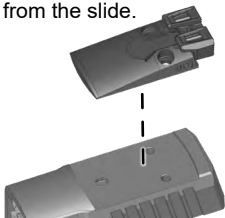
### 14.3.1 REAR SIGHT PLATE

#### Removal

1. Using a 2mm drive bit, remove the rear sight plate screws.

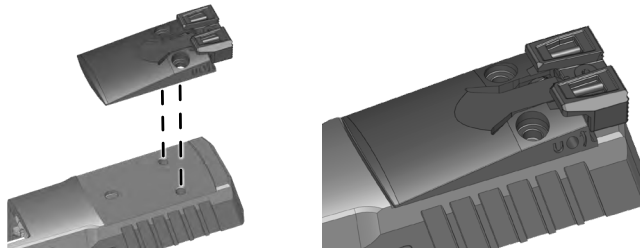


2. Remove the sight plate from the slide.



#### Install

1. Position the sight plate in the slide cutout and align the screw holes.



2. Using a 2mm drive bit, install the rear sight plate screws and tighten to 8 in-lbf.





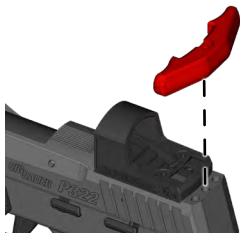
### 14.3.2 SLIDE RACKER (COMP SLIDE ONLY)

#### Removal

1. Using a 2.5mm drive bit, remove the slide racker screw.

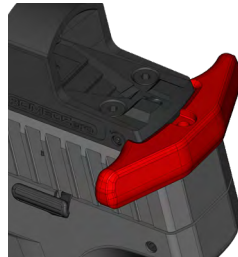


2. Remove the slide racker from the slide.



#### Install

1. Place the slide racker in its slot on the slide and align the screw hole.



2. Using a 2.5mm drive bit, install the slide racker screw and tighten to 8 in-lbf.





### 14.3.3 ROMEOZERO

#### Removal

1. Using a 2mm drive bit, remove the ROMEOZero mounting screws.



2. Remove the ROMEOZero from the slide.



#### Install

1. Place the ROMEOZero in the cutout of the slide and align the screw holes.



2. Using a 2mm drive bit, install the ROMEOZero mounting screws and tighten to 8 in-lbf.

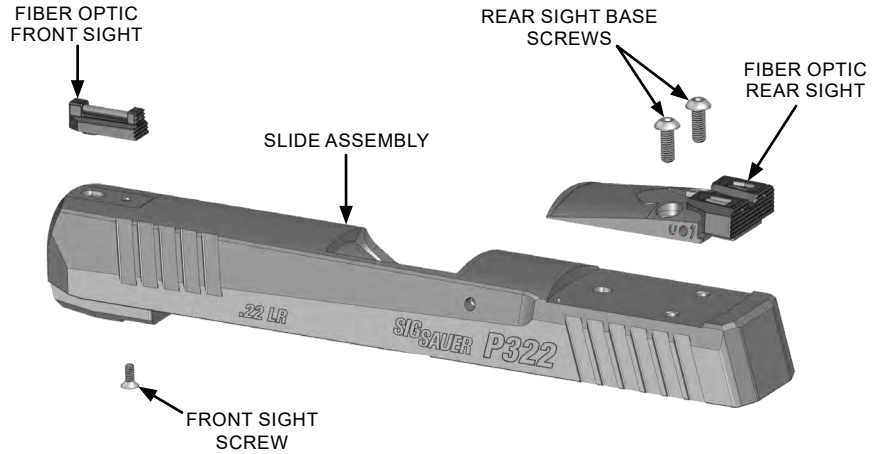




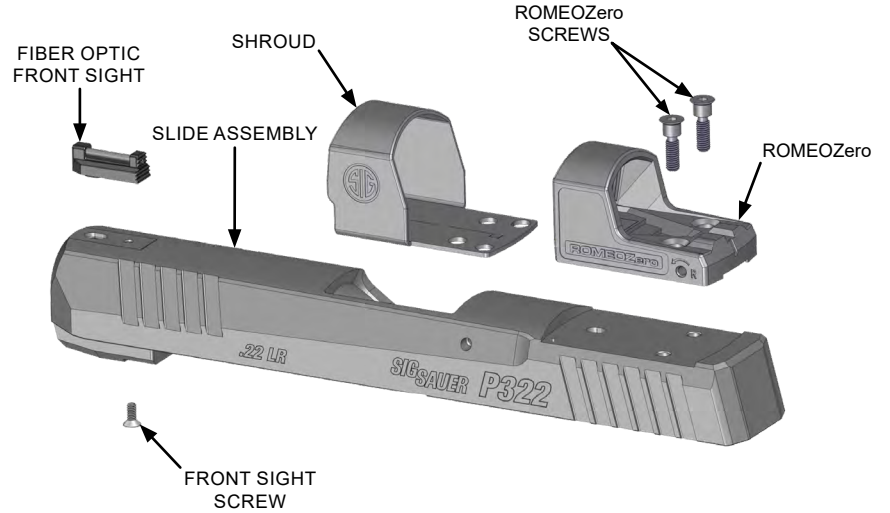
## 15.0 P322 PARTS DIAGRAMS

### 15.1 SLIDES

#### 15.1.1 STANDARD SLIDE

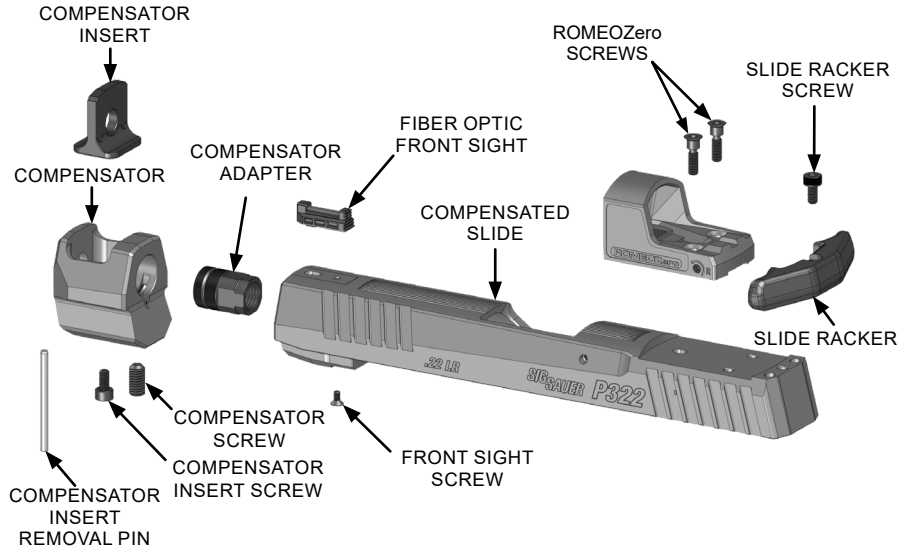


#### 15.1.2 SLIDE WITH ROMEOZERO



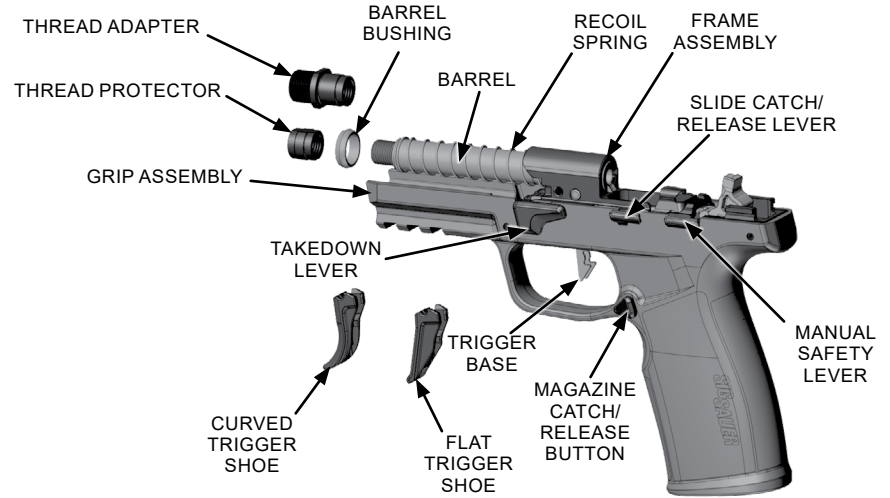


### 15.1.3 COMPENSATED SLIDE



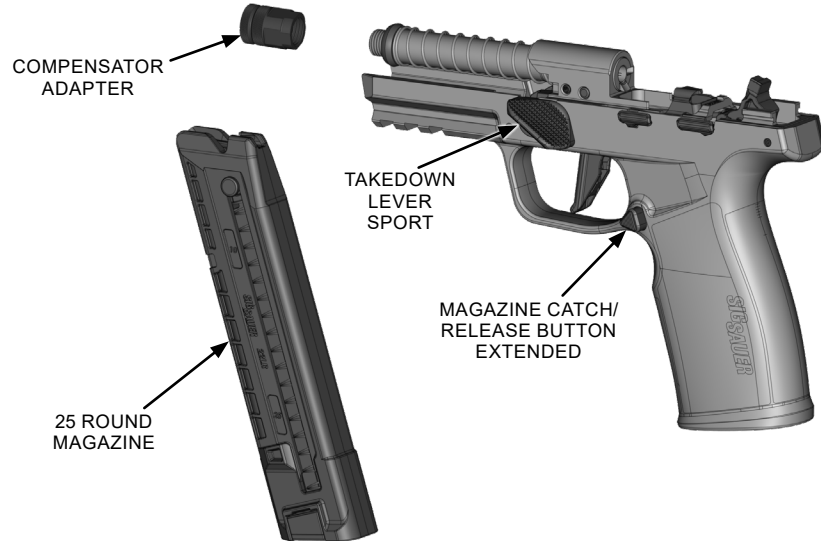
### 15.2 FRAMES

#### 15.2.1 STANDARD FRAME AND GRIP





### 15.2.2 COMPENSATED FRAME AND GRIP



### 16.0 STORAGE AND TRANSPORTATION



#### **WARNING UNLOAD/CLEAR**



FAILURE TO ENSURE THE FIREARM IS UNLOADED AND CLEARED COULD RESULT IN UNINTENTIONAL DISCHARGE, CAUSING SERIOUS INJURY, DEATH, OR PROPERTY DAMAGE. REMOVING THE MAGAZINE FROM THE FIREARM DOES NOT PREVENT A CHAMBERED ROUND FROM BEING FIRED.



#### **WARNING STORAGE**

NEVER PLACE OR STORE ANY FIREARM IN SUCH A MANNER THAT IT MAY BE DISLODGED. FIREARMS SHOULD ALWAYS BE STORED, LOCKED, UNLOADED, SEPARATE FROM THEIR AMMUNITION, AND INACCESSIBLE TO CHILDREN AND ANY OTHER UNAUTHORIZED PERSON. THE USE OF A LOCKING DEVICE OR SAFETY LOCK IS ONLY ONE ASPECT OF RESPONSIBLE FIREARMS STORAGE. FAILURE TO PROPERLY STORE FIREARMS MAY CAUSE SERIOUS INJURY OR DEATH TO SELF OR OTHERS, OR PROPERTY DAMAGE.

**Short Term Storage (90 days or less)**

1. Ensure the chamber and magazine do not contain live ammunition.
2. Clean the bore and chamber.
3. Apply a generous coat of CLP to the chamber and bore.
4. Apply a light coat of CLP to all other metal surfaces for corrosion protection.

**Long Term Storage (90 days or longer)**

1. Ensure the firearm is thoroughly cleaned.
2. Apply a medium coat of CLP to the chamber and bore.
3. Apply a light coat of CLP to all other metal surfaces for corrosion protection.
4. Wrap the firearm with a waterproof material.
5. Place the firearm in a corrosion resistant barrier bag.

**Environmental Storage Recommendations (Armory)**

Provide humidity control to limit the relative humidity to no greater than 40% at 80°F (26.7°C). If personnel will be working in these areas, design to 68°F (20.0°C) dry bulb and 40% RH for indoor design heating conditions, and 75°F (23.9°C) dry bulb and 40% RH for indoor design cooling conditions.

**17.0 REPLACEMENT PARTS POLICY****WARNING**

**IT IS THE PURCHASER'S RESPONSIBILITY TO BE ABSOLUTELY CERTAIN THAT ANY PARTS ORDERED FROM THE FACTORY ARE CORRECTLY FITTED AND INSTALLED. FIREARMS ARE COMPLICATED MECHANISMS AND IMPROPER FITTING OF PARTS MAY RESULT IN A DANGEROUS MALFUNCTION, DAMAGE TO THE FIREARM, AND SERIOUS INJURY TO THE SHOOTER AND OTHER PERSONS. THE PURCHASER AND INSTALLER OF PARTS MUST ACCEPT FULL RESPONSIBILITY FOR THE CORRECT ADJUSTMENT AND FUNCTIONING OF THE FIREARM AFTER SUCH INSTALLATION.**

**Parts Policy**

Our Service Department maintains a full complement of replacement parts. Even though most gunsmiths have the knowledge, training, and the ability to make necessary repairs to the firearm, the skill and workmanship of any particular third-party gunsmith is totally beyond our control.

Should the firearm ever require service, it is strongly recommended that it be returned to SIG SAUER Inc. A firearm is a precision instrument and some replacement parts will require individual fitting to ensure correct operation. A wrong part, improper fitting, or incorrect mechanical adjustment may result in an unsafe condition or dangerous malfunction, damage to the firearm, or cause possible serious injury to the shooter or others.



IF ANY PART IS ORDERED WITHOUT RETURNING THE FIREARM TO SIG SAUER, Inc. the customer bears full responsibility for ensuring that the part supplied is correct for their particular firearm and is properly installed and fitted by a qualified gunsmith.

SIG SAUER INC. IS NOT RESPONSIBLE FOR THE FUNCTIONING OF ANY FIREARM IN WHICH REPLACEMENT PARTS ARE INSTALLED BY OTHERS.

THE USE OF AFTERMARKET PARTS IS NOT AUTHORIZED AND WILL VOID THE WARRANTY OF THIS FIREARM. THE REPLACEMENT OF ORIGINAL EQUIPMENT MANUFACTURER (OEM) SIG SAUER PARTS WITH AFTERMARKET PARTS IS UNAUTHORIZED AND IN SOME INSTANCES COULD ALTER THE FUNCTION OF THE FIREARM, CREATING A DANGER TO THE OPERATOR.

Scan the QR code below to visit the Small Parts Shopper page at sigsauer.com.



## 18.0 TROUBLESHOOTING GUIDE

### 18.1 STOPPAGES



**WARNING STOPPAGE**



**STOP FIRING IMMEDIATELY. UNLOAD AND CLEAR THE FIREARM.**

A stoppage is an interruption in the pistol's cycle of function that can be cleared by the operator taking immediate action. Immediate action consists of steps taken by the operator to place the pistol back in service without investigating the cause of the stoppage.

**Immediate action:**

1. Keep the firearm pointed in a safe direction.
2. Unload and clear the firearm immediately by removing the magazine, locking the slide to the rear, and clearing any ammunition from the firearm.
3. Visually and physically checking the chamber, breech face, and magazine well.

With the firearm unloaded and cleared, perform an additional visual inspection of the firearm and the ammunition. If a bore obstruction exists, refer to **18.2 Obstructed Bore on page 106**. If damage to the firearm is found, the stoppage persists, or a malfunction is suspected, take the firearm to a certified SIG SAUER Armorer for service.



## 18.2 OBSTRUCTED BORE



### **WARNING OBSTRUCTED BORE**



**STOP FIRING IMMEDIATELY AND KEEP THE FIREARM POINTED IN A SAFE DIRECTION. UNLOAD AND CLEAR THE FIREARM. DO NOT FIRE ANOTHER ROUND UNTIL THE OBSTRUCTION IS CLEARED. FAILURE TO COMPLY CAN RESULT IN SERIOUS INJURY OR DEATH TO THE OPERATOR AND/OR OTHERS AND CATASTROPHIC DAMAGE TO THE FIREARM.**

Immediately stop shooting and keep the firearm pointed in a safe direction whenever:

- There is difficulty or unusual resistance in chambering a cartridge;
- A cartridge misfires (does not go off);
- The mechanism fails to extract a fired cartridge case;
- Unburned grains of propellant powder are discovered spilled in the mechanism;
- A shot sounds weak or abnormal.

It is possible that a bullet is lodged part way down the barrel. If a bullet is in the bore, do not attempt to shoot it out by using another cartridge or by blowing it out with a blank or a cartridge from which the bullet has been removed. Firing a subsequent bullet into the obstructed barrel can damage the firearm and cause serious injury to the shooter or bystanders. Bullets can become lodged in the barrel when the cartridge has been improperly loaded without propellant powder, the powder fails to ignite, or the bullet was not properly seated in the cartridge case.

If it is suspected that a bullet is obstructing the barrel, immediately unload and clear the firearm. Field strip the firearm and look through the bore of the barrel. It is not sufficient to merely look in the chamber; a bullet may be lodged some distance down the barrel where it cannot easily be seen. Attempt to remove the bullet by tapping it out with a cleaning rod. If the bullet can be removed, clean any unburned powder grains from the bore, chamber, and mechanism before resuming shooting. If the bullet cannot be dislodged by tapping it with a cleaning rod, take the firearm to a certified SIG SAUER Armorer.

## 18.3 COOK-OFF



### **WARNING COOK-OFF**



**COOK-OFF IS DEFINED AS A CHAMBERED CARTRIDGE DETONATING DUE TO THE HEAT OF THE BARREL. FAILURE TO COMPLY WITH THE BELOW LISTED STEPS COULD RESULT IN DEATH, SERIOUS INJURY, OR PROPERTY DAMAGE.**

If the pistol stops firing with a cartridge in the chamber of a hot barrel due to a misfire or stoppage, remain calm and do the following:

1. Keep the pistol pointed in a safe direction.
2. Immediately remove the magazine and chambered cartridge.
3. If the cartridge cannot be removed within 10 seconds, keep pistol pointed in a safe direction and wait at least 15 minutes for the chamber and barrel to cool, then remove the cartridge.

**18.4 GENERAL STOPPAGES**

Stoppage	Cause	Correction
<b>Failure to Feed</b>		
No cartridge fed into the chamber.	Magazine not properly inserted or magazine is deformed.	Insert magazine properly or change magazine.
	Magazine improperly loaded.	Unload magazine and reload.
Slide does not close easily or completely.	Pistol or cartridge is fouled (dirty) or pistol is too heavily lubricated.	Clean and lubricate pistol.
	Incorrect ammunition.	Replace ammunition.
	Pistol requires service.	Contact Customer Service.
<b>Cannot Insert Magazine (After Reassembly)</b>		
Cannot seat magazine in magazine well.	Improper assembly of slide to receiver (takedown lever incorrectly positioned).	1. Lock slide to rear with slide catch lever. 2. Rotate takedown lever to correct position.
	Magazine loaded with more cartridges than it was designed for.	Unload to designed cartridge capacity.

Stoppage	Cause	Correction
<b>Failure to Fire</b>		
Trigger is completely pulled but cartridge does not fire.	Faulty ammunition.	Manually cycle in next cartridge.
	Hammer or firing pin obstructed.	Inspect, clean, and lubricate the pistol.
	Slide not fully forward.	Manually cycle in next cartridge, ensure slide is completely forward.
	Magazine disconnect malfunctioning.	Contact Customer Service.
	Pistol requires service.	Contact Customer Service.
<b>Failure to Extract or Eject</b>		
After firing, the case stays in the chamber or is jammed in the ejection port.	Insufficient recoil due to dirt or fouling.	Clean and lubricate the pistol, clean but do not lubricate the barrel chamber.
	Light hold or limp wrist.	Adjust grip.
	Low-powered ammunition.	Change ammunition.
	Pistol requires service.	Contact Customer Service.



## 18.5 MINIMIZING STOPPAGES

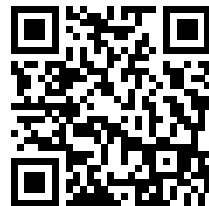
- Most stoppages can be minimized by cleaning and lubricating the pistol. See section **10.2 *Cleaning the Pistol on page 47.***
- Cleaning and lubricating the pistol after each range session will reduce the chances of a stoppage due to dirt and residue buildup.
- Perform maintenance if the firearm is exposed to extreme environmental conditions (rain, snow, freezing temperatures, etc.).
- Periodically inspect the pistol if it is to be stored for extended periods of time without use.
- Most stoppages are directly related to the magazine. Perform maintenance on the magazines as well as the firearm. See section **12.0 *Magazine on page 58.***
- Mark the magazines so that magazines related to a stoppage can be easily identified.

## 19.0 FACTORY REPAIR OF THE FIREARM

Contact Customer Service for questions or concerns regarding the performance or serviceability of the firearm. There are three ways to contact Customer Service:

Have the firearm's serial number available before contacting Customer Service.

1. Call (603) 610-3000, choose option 1.
2. Email [CustomerService@sigsauer.com](mailto:CustomerService@sigsauer.com).
3. Go to <https://www.sigsauer.com/customer-support> to message Customer Service electronically. Scan the QR code below to visit the Customer Support page at sigsauer.com.





## 19.1 RETURNING FIREARMS FOR REPAIR

Do not ship a firearm without an RMA number provided by Customer Service.



**WARNING DO NOT SHIP AMMUNITION**

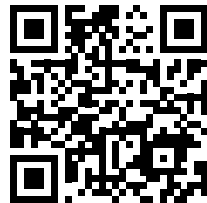


**BEFORE SHIPPING ANY FIREARM, BE ABSOLUTELY CERTAIN THAT THE FIREARM AND MAGAZINES ARE UNLOADED. DO NOT SHIP AMMUNITION WITH A FIREARM.**

1. The RMA number allows SIG SAUER to track the status of the return from the time SIG SAUER receives the firearm until it is returned.
2. Package the firearm securely to prevent damage.
3. Do not include any accessories such as scopes or mounts unless directed to do so.
4. Some states and localities, require firearms to be shipped and returned to SIG SAUER using a federally licensed firearms dealer.
5. Federal law prohibits persons who do not possess a Federal Firearms License (FFL) from shipping a firearm via the U.S. Postal Service.
6. Any shipment of firearms outside U.S. borders is subject to the export laws of the United States and to the valid laws of the specific country.
7. SIG SAUER is not responsible for any damage to a firearm during shipping until it is received.
8. Firearms must be insured and prepaid prior to shipment (SIG SAUER does not accept collect shipments) to the address provided by Customer Service.

## SIG SAUER INFINITE GUARANTEE™

For warranty information on new SIG SAUER firearms, scan the QR code below to visit the SIG SAUER Warranty Information and Registration page. New firearms can also be registered and warranty information can be found on the website.





NOTES:

NOTES:

**SIGSAUER®**

**sigsauer.com**

**SIG SAUER, Inc.  
72 Pease Boulevard, Newington, NH 03801 USA**

All trademarks, service marks, trade names, trade dress, product names, and logos appearing in this manual are the property of their respective owners. No trademark or service mark appearing in this manual may be used without written consent of the mark's owner.