

SIGSAUER®



SIG P365® FLUX™ RAIDER

OPERATOR'S MANUAL: HANDLING & SAFETY INSTRUCTIONS



READ THE INSTRUCTIONS AND WARNINGS IN THIS MANUAL CAREFULLY BEFORE USING THIS FIREARM. DO NOT DISCARD THIS MANUAL.

THIS MANUAL SHOULD ALWAYS ACCOMPANY THIS FIREARM AND BE TRANSFERRED WITH IT UPON CHANGE IN OWNERSHIP OR WHEN THE FIREARM IS PRESENTED TO ANOTHER PERSON.



WARNINGS

1.0 SAFETY WARNINGS

Read this entire manual thoroughly and carefully prior to using this firearm.

The warnings in this Operator's Manual are extremely important. By understanding the inherent dangers of firearm use and taking the precautions outlined in this manual, a high level of safety is attainable when handling the firearm. Failure to comply with any of these warnings may result in serious injury or death to the operator or others, as well as severe damage to the firearm or other property.

Warnings are identified by a red banner with the word **WARNING** in white, bold, uppercase letters with a **WARNING** icon.



WARNING

CAUTIONS in this manual identify a risk of damage to the firearm being maintained. **CAUTIONS** are identified by a black banner with the word **CAUTION** in white, bold, uppercase letters.

CAUTION



WARNINGS

SIG SAUER

SIG SAUER, INC.® firearms are designed to function reliably with proper care and knowledgeable use. Operators must understand the safe operation and use of any SIG SAUER firearm. Read and follow these instructions carefully. Do not use the firearm without understanding the instructions outlined in this manual and the safe operation of the firearm.

Failure to follow the instructions outlined in the manual may result in serious injury or death to the operator and/or others. Damage to the firearm and other property may also occur.



WARNINGS

2.0 HANDLING

2.0.1 SAFETY MECHANISMS

MANUAL SAFETY

Consistent with individual operators' philosophies of use, SIG SAUER offers firearms with and without a manual safety, and the decision whether to deploy a manual safety rests with the operator. This is an important decision that must consider several factors, including the intended use of the firearm (e.g., law enforcement, defensive carry, home defense, range use, competition), level of firearms experience and training, frequency of practice, holster selection, and carry position, among others. The internal safeties of the firearm are designed to prevent it from firing without the trigger being fully pulled. When the trigger is pulled, even unintentionally—whether by a finger or foreign object—the firearm will fire as designed. When engaged, a manual safety locks the trigger and prevents it from being accidentally or intentionally pulled, providing additional protection from unintentional discharge. However, an engaged manual safety will also prevent an operator from firing their pistol even when they need it to fire if the manual safety is not first disengaged.

SIG SAUER encourages those considering the purchase of a firearm to carefully evaluate whether a manual safety would be the best choice for them.



WARNINGS

SIG SAUER

Regardless of whether a firearm is equipped with an external manual safety, it remains the operator's obligation to continue to practice safe firearm handling. Firearms should always be treated as loaded and must be handled in a safe manner even if the firearm is equipped with a manual safety. Trigger discipline and utilizing an appropriate holster that protects the trigger when a firearm is being carried is of paramount importance even for firearms that have a manual safety (as the pistol can be carried with the safety in a disengaged condition). Be advised, however, that holsters, while offering further trigger protection, do not prevent accidental discharges as it may be possible for a foreign object to get into the holster, particularly with light-bearing holsters. Extreme caution should be taken when holstering and unholstering a pistol to ensure nothing gets into the holster. Pistol safeties, whether internal or external, should never be relied upon to excuse undisciplined handling of a firearm.

This firearm may not have a manual safety if you have made the decision, based on the factors above, to purchase a gun without a manual safety. A manual safety – when engaged -- is designed to mechanically prevent the firearm from discharging when the trigger is pulled or pressed, either intentionally or unintentionally. **THE MOST EFFECTIVE SAFETY IS TO CARRY YOUR PISTOL WITHOUT A ROUND IN THE CHAMBER, AND TO LOAD A ROUND IN THE CHAMBER ONLY WHEN READY TO FIRE.** Regardless of whether your firearm is equipped with a manual safety you must take steps to protect against unintentional movement of the trigger, particularly if you elect to carry your pistol with a round in the chamber. If you have a round in the chamber and the trigger is pressed to the rear, the firearm will fire absent an engaged manual safety.



WARNINGS

A manual safety is designed to augment, not replace, safe firearm handling practices. You are responsible to protect against inadvertent trigger movement while carrying any firearm. Even if your firearm is equipped with a manual safety, you must ensure that the trigger is not contacted in any circumstance--whether by finger or an object--other than when you intend to discharge the firearm.

2.0.2 BASIC RULES OF SAFE FIREARMS HANDLING

- ALWAYS treat every firearm as if it were loaded.
- ONLY load a round in the chamber when ready to fire.
- NEVER pull the trigger or place fingers on the trigger or in the trigger guard until ready to fire.
- NEVER allow clothing or other foreign objects to interfere or come in contact with the trigger.
- ALWAYS carry a pistol in a holster specifically designed for that pistol. It is the responsibility of the customer to ensure the holster is compatible with their specific pistol and any installed accessories.
- ALWAYS be sure the barrel is clear of any obstruction.
- ALWAYS be aware of the surroundings, and the safety of bystanders before shooting. Know the target and what is in front of and beyond it.
- ALWAYS use clean, dry, original factory-made ammunition of the proper type and caliber for the firearm.
- ALWAYS wear ear protection and safety glasses when shooting.



WARNINGS

SIG SAUER

- ALWAYS carry a firearm so that control of the muzzle can be maintained in the event of a fall or stumble.
- NEVER shoot at a flat surface or water.
- DO NOT leave a loaded firearm unattended. Only store a firearm that is unloaded, cleared of all ammunition, and locked in a secure place inaccessible to children or unauthorized persons.
- NEVER allow the firearm to be used by anyone who has not read and understood the Operator's Manual.
- ALWAYS unload and clear a firearm according to the instructions in the Operator's Manual before handing it to another person.
- DO NOT point any firearm, loaded or unloaded, at any undesignated or unsafe target.
- NEVER discharge a firearm near an animal unless the animal is trained to accept the noise. An animal's startled reaction could injure it or cause an accident.
- NEVER drink alcoholic beverages or use drugs before or during shooting, as vision and judgment could be seriously impaired, making firearm handling unsafe.
- ALWAYS seek a doctor's advice before using a firearm if using medication that would impair judgment or usage.



WARNINGS

2.1 ABUSIVE HANDLING

SIG SAUER firearms incorporate effective mechanical safeties. However, like any mechanical device, exposure to abusive conditions may harm these safety mechanisms and cause them to fail to work as designed. Do not subject the SIG SAUER firearm to any abusive handling. This includes the firearm being dropped, impact to the firearm, or the firearm being struck by another object. Always maintain control of the firearm. If the firearm suffers an abusive event such as previously described, or experiences a malfunction, do not attempt to use the firearm. Keep the firearm pointed in a safe direction, unload and clear the firearm of all ammunition immediately, and have it inspected by a certified SIG SAUER armorer before using the firearm.

ALWAYS keep the firearm pointed in a safe direction. A safe direction is defined as an area where, if the firearm were to discharge, no property damage would occur, and no personal injury would result.

As previously noted, if the SIG SAUER firearm suffers an abusive event, unload it immediately and have it inspected by a certified SIG SAUER Armorer prior to using the firearm. If the firearm suffers an abusive event during a life-threatening/self-defense situation, follow the steps below immediately:

1. Pulling the slide entirely rearward to eject the chambered cartridge.
2. Releasing the slide to chamber a new cartridge and resetting the trigger mechanism. (Do not ride the slide forward.)
3. The firearm should now be returned to proper operational condition.



WARNINGS

SIG SAUER

Intentional or repetitive abusive handling of any SIG SAUER firearm will void the manufacturer's warranty and could render the firearm unsafe.

3.0 ALTERATIONS AND REPLACEMENT PARTS

Do not attempt to disassemble a SIG SAUER firearm beyond the point explained in the Operator's Manual. Disassembly beyond the instructions in the Operator's Manual is restricted to a certified SIG SAUER Armorer. Failure to comply with these restrictions will void the warranty. This SIG SAUER firearm was designed to function properly in its original condition. Unauthorized alterations can make it unsafe. Do not alter or substitute any parts or accessories not manufactured by SIG SAUER for this firearm. Warnings and instructions about the use of SIG SAUER replacement parts, assemblies, and accessories may be described in instructions accompanying the specific products. Read and carefully follow those instructions. Failure to comply may result in serious injury or death to the operator and/or others. The use of aftermarket replacement parts is unauthorized and, in some instances, could alter the function of the firearm.



WARNINGS

3.1 ACCESSORIES

It is the responsibility of the operator to ensure all accessories are compatible with the firearm and do not interfere with the safe operation and handling of the firearm.

3.1.1 HOLSTERS

A properly designed holster protects the trigger from being contacted inadvertently when the firearm is holstered.

- Make sure the holster is designed specifically to accept the specific accessories installed on the firearm. Firearms equipped with a tactical light may have large openings to accommodate the bezel of the light, rendering the trigger area of the holstered firearm accessible to foreign objects or fingers if a light is not installed or if the holster is not sized specifically for use with the light that is installed on the firearm.
- Ensure the holster will protect the pistol while seated in a vehicle from surrounding features or devices in the vehicle that could interfere with the safe carry of the pistol. For example, entering and exiting the vehicle without the seat belts becoming snagged on the firearm or the holster.

Read and follow all warnings and instructions that are provided by the holster manufacturer before using. Failure to follow the instructions may result in serious injury or death to the operator and/or others.



WARNINGS

SIG SAUER

3.2 TRANSPORTING

When transporting a firearm, be sure the firearm is unloaded and cleared of all ammunition. It is the responsibility of the operator to know the laws of the jurisdiction(s) they are in when traveling with a firearm.

3.3 STORAGE

Safe and secure storage is an important responsibility. The only safe way to store a firearm is unloaded, cleared of all ammunition, and locked in a secure place inaccessible to children or unauthorized persons.

3.4 CHAMBER SAFETY FLAG

Every SIG SAUER firearm is shipped with a chamber safety flag. When installed, the chamber safety flag prevents the chambering of a round and provides a readily visible indication that the firearm's chamber is empty. The chamber safety flag is to be placed in the firearm's chamber at all times when the firearm is not in use. Many public ranges require chamber safety flags be installed when the firing line is cold.



WARNINGS

3.5 LIABILITY

PISTOLS and RIFLES are classified as FIREARMS and are sold by SIG SAUER with the specific understanding that SIG SAUER shall not be responsible in any manner whatsoever for malfunctioning of the firearm, physical injury, or property damage resulting in whole or in part from:

- Criminal or negligent discharge
- Improper, careless, or abusive handling
- Unauthorized modifications or parts replacement
- Defective, improper, hand-loaded, or reloaded ammunition
- Corrosion
- Neglect
- Other influences beyond our direct and immediate control

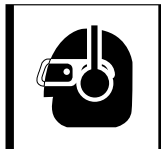
This limitation applies regardless of whether liability is asserted on the basis of contract, negligence, or strict liability (including any failure to warn). Under no circumstance shall SIG SAUER, Inc., be liable for incidental or consequential damages such as loss of use of property, commercial loss, and loss of earnings or profits.



WARNINGS

SIG SAUER

4.0 EYE AND EAR PROTECTION



Always wear safety glasses that meet the requirements of American National Standards Institute (ANSI) z87.1 or European Standard (EN)166:2001 and ear plugs and “ earmuff ” type protectors whenever shooting. Always make certain that persons close are similarly protected. Unprotected eyes may be injured by powder, gas, carbon residue, lubricant, metallic particles, or similar debris that may emanate occasionally from any firearm in normal use. Without ear protection, repeated exposure to shooting noise may lead to cumulative, permanent hearing loss.

5.0 AMMUNITION

Use only high-quality, original, factory-manufactured ammunition. Do not use cartridges that are dirty, wet, corroded, bent, or damaged. A damaged or deformed cartridge may impede chambering or cause the cartridge case to burst upon firing. Do not oil cartridges. Lubricant or other foreign matter on cartridges can potentially cause dangerous ammunition malfunctions. Some highly penetrative lubricants can also migrate inside cartridge cases and cause deterioration of the propellant powder; on firing, the powder might not ignite. If only the primer ignites, there is danger that the bullet may become lodged in the barrel. Only use ammunition of the caliber for which the firearm is chambered.

The proper caliber is permanently engraved on the firearm’s barrel.



WARNINGS

The use of reloaded, hand-loaded (re-manufactured), or other nonstandard ammunition voids all warranties. Reloading is a science, and improperly loaded ammunition can cause severe damage to the firearm and may result in serious injury or death to the operator and/or others.

Always use ammunition that complies with the industry performance standards established by the Sporting Arms and Ammunition Manufacturers' Institute, Inc. (SAAMI) or ammunition manufactured to U.S. military specifications.

SIG SAUER, Inc., specifically disclaims responsibility for any damage or injury whatsoever occurring in connection with, or as a result of, the use of any SIG SAUER firearm of faulty, nonstandard, hand-loaded (reloaded) ammunition, or cartridges other than those for which the firearm was originally chambered. Excessive pressure inside the chamber or barrel while firing a firearm may cause severe damage and serious injury or death to the shooter or to others may occur.



WARNING: CANCER AND REPRODUCTIVE HARM—www.P65warnings.ca.gov



DISCHARGING FIREARMS IN POORLY VENTILATED AREAS, CLEANING FIREARMS, OR HANDLING AMMUNITION MAY RESULT IN EXPOSURE TO LEAD AND OTHER SUBSTANCES KNOWN TO THE STATE OF CALIFORNIA TO CAUSE BIRTH DEFECTS, REPRODUCTIVE HARM, AND OTHER SERIOUS PHYSICAL INJURY. MAINTAIN ADEQUATE VENTILATION AT ALL TIMES. WASH HANDS THOROUGHLY AFTER EXPOSURE. SHOOTING OR CLEANING FIREARMS MAY EXPOSE OPERATORS TO LEAD.



WARNINGS

SIG SAUER

6.0 LOCKING DEVICES



All SIG SAUER firearms are shipped with a key-operated locking device or a lockable case.

Never install the locking device inside the trigger guard or in any way that makes it possible to pull the trigger! Do not leave the keys in the lock.

All firearm owners are responsible for secure storage of any firearm.

ALWAYS refer to the locking device's manufacturer directions for installation and removal of the device.



7.0 SAFETY INFORMATION

Do not practice loading or firing any firearm with live ammunition until the Operator's Manual has been read and understood.

Seek supervised instruction for any additional information.

The SIG SAUER Academy provides all levels of firearms safety and skill training.

For more information contact:



sigsaueracademy.com • (603) 610-3400
Epping, New Hampshire

SAFETY MUST BE THE FIRST AND CONSTANT CONSIDERATION OF EVERY PERSON WHO HANDLES FIREARMS AND AMMUNITION.

For more information about safety, responsible firearms ownership, and shooting sports, contact:
National Rifle Association (NRA) of America
11250 Waples Mill Road, Fairfax, VA 22030-7400 • 1-800-672-3888
nra.com

THIS PAGE INTENTIONALLY LEFT BLANK



Contents

1.0	Safety Warnings	2
2.0	Handling	4
3.0	Alterations and Replacement Parts	9
4.0	Eye and Ear Protection	13
5.0	Ammunition	13
6.0	Locking devices	15
7.0	Safety Information	16
8.0	Mechanical Characteristics	20
8.1	Description of Raider Brace	20
8.2	Features	22
8.3	Compatibility List	23
8.4	Main Components and Operator Controls	24
9.0	Handling	26
9.1	Preparation Instructions	26
9.2	Manual Safety	27
9.3	Loading the Magazine	28
9.4	Loading the Pistol	30
9.5	Optional Front Magazine Storage	34
9.6	Reloading During Shooting – Depleted Magazine	36
9.7	Reloading During Shooting – Partial Magazine	39
10.0	Firing	43
11.0	Unloading and Clearing the Pistol	44
11.1	Unloading the Pistol (Magazine Not Empty, Slide Closed)	45
11.2	Unloading the Pistol (Magazine Empty, Slide Open)	48

12.0	Operator-Level Authorized Preventative Maintenance	51
12.1	Disassembly of Raider Brace	51
12.2	Magazine Disassembly	60
12.3	Cleaning and Lubricating	62
12.4	Pistol Assembly	67
12.5	Magazine Assembly	77
13.0	Function Check	79
14.0	Optional Stocks	81
14.1	Remove Raider Brace	82
14.2	Install Optional Stock	85
14.3	Remove Brace Deployment Button	87
15.0	Remove Shroud	89
16.0	Magazines	91
17.0	Storage and Transportation	92
17.1	Storage	92
17.2	Transportation	94
18.0	Replacement Parts Policy	95
19.0	Troubleshooting Guide	97
19.1	Obstructed Bore	98
19.2	Cook-Off	100
19.3	General Stoppages	101
19.4	Minimizing Stoppages	103
20.0	Factory Repair of the Firearm	104
20.1	Returning Firearms for Repair	105
	SIG SAUER® Infinite Guarantee™	106



8.0 MECHANICAL CHARACTERISTICS

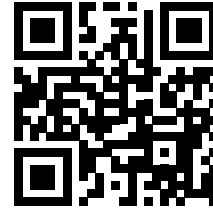
8.1 DESCRIPTION OF RAIDER BRACE

The FLUX™ Raider is a chassis system designed by FLUX Defense to be compatible with select P365® pistols. It comes standard with a brace, but an optional rifle stock can be purchased. The brace version is not designed or intended to be shouldered. Short-barreled rifle (SBR) stocks are available for those looking to register their SIG P365 as an SBR.

It was developed to create the smallest, concealable PDW that can be drawn as fast as a handgun.



Scan the QR code to visit fluxdefense.com for additional information about Flux Defense products, install videos, and merchandise.



Scan the QR code to visit sigsauer.com for additional information about SIG SAUER products, SIG SAUER Academy and the SIG Experience Center, Special Programs, and additional support.





8.2 FEATURES

- Advanced injection molded polymer.
- Patented Dual Magazine Release system for lightning fast reloads.
- Slide mounted optic.
- Closed system is resistant to dust and debris.
- Overall Dimensions, Collapsed w/ Shroud: 9.83"L X 4.97"H X 1.5"W.
- Extended 18.5"L X 4.97"H X 1.5"W.
- Fixed-length pistol brace ends 13.5" behind trigger.
- Light: 12.6 oz (Chassis only), 52 oz (17rd, 21rd, FOXTROT1X, ROMEO X Compact).
- Excellent ergonomics.
- Hold up to 38+ rounds with optional magazines.
- Optional Holster (IWB, OWB).
- Accepts larger diameter suppressors.

8.3 COMPATIBILITY LIST



WARNING PHYSICAL INJURY



USING A BARREL SHORTER THAN 3.7 INCHES, A THREADED BARREL IN COMBINATION WITH A SUPPRESSOR IS NEEDED. FAILURE TO COMPLY COULD RESULT IN SERIOUS INJURY. KEEP HANDS, FINGERS, AND THUMBS AWAY FROM THE MUZZLE WHILE FIRING AS SERIOUS INJURY CAN OCCUR.

Compatibility Table		Compatibility Table	
Slide	XL, TACOPS, FUSE, or Larger Only	Slide mounted optic	Yes
Barrel*	3.7" or Larger Only	Suppressor Height Iron Sights	No
Barrel w/ Suppressor**	Yes	Aftermarket Triggers***	No
Magazine	17+ only	FCU	Yes
		FCU w/ Manual Safety	Yes
		FCU w/ Magazine Disconnect Mechanism	No

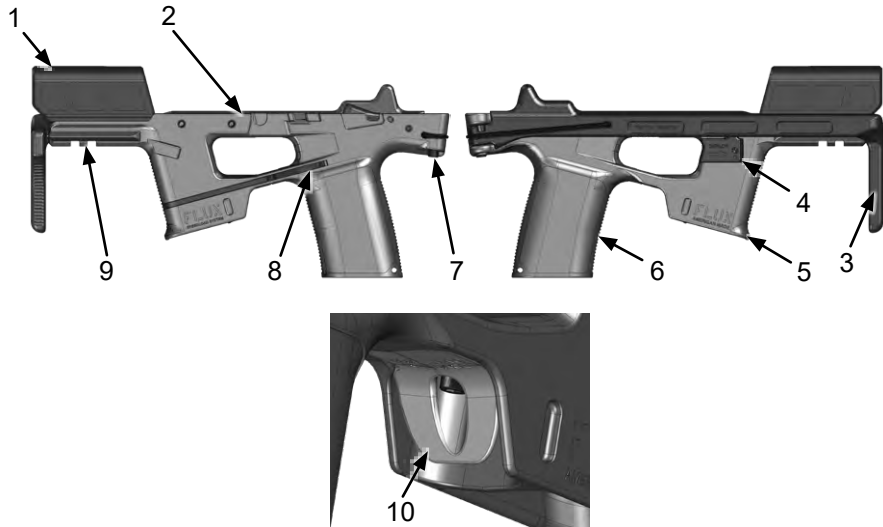
* Barrels smaller than 3.7" must be threaded and used only with an installed suppressor to ensure the muzzle of the pistol is forward of the grip module.

** Use of a suppressor may require removal of the shroud - see Section 15.

***Aftermarket triggers should not be used with a P365 equipped with a Flux Raider grip module, as they may interfere with proper operation of the mechanical safety. Installation of any aftermarket parts will void the warranty of the SIG SAUER firearm.



8.4 MAIN COMPONENTS AND OPERATOR CONTROLS



Operator Controls and Features		
1	Shroud	Protects the hands from the slide and muzzle blast. It allows for “C” grip.
2	Raider Chassis	Supports frame assembly, magazines, and accessories.
3	Pistol Brace	Foldable brace to help stabilize movement while firing.
4	Brace Deployment Button	Deploys the Raider brace.
5	Forward Magazine Well	Forward storage area for spare magazine
6	Rear Magazine Well	Holds and positions magazine for feeding ammunition into the barrel chamber.
7	Brace Release Button	Releases the brace to allow it to be stowed.
8	Rear Magazine Release Button	Push button forward to release rear magazine.
9	Accessory Rail	Provides a mounting platform for accessories and attachments.
10	Dual Magazine Release	Two stage button to release both front and rear magazines to optimize magazine swaps. Half push releases front magazine, full push releases both.



9.0 HANDLING

9.1 PREPARATION INSTRUCTIONS



WARNING MAINTENANCE

PRIOR TO PERFORMING ANY MAINTENANCE ON THE FIREARM, READ AND UNDERSTAND THE OPERATOR'S MANUAL. ENSURE THAT THE FIREARM IS UNLOADED, CLEARED, AND THE MAGAZINE IS REMOVED. SAFETY GLASSES SHOULD BE WORN WHENEVER DISASSEMBLING, CLEANING, INSPECTING, OR ASSEMBLING A FIREARM. FAILURE TO COMPLY MAY RESULT IN SERIOUS INJURY OR DEATH TO THE OPERATOR OR BYSTANDERS.

Perform an initial cleaning and lubrication of the pistol after unpacking it. Any fouling present will have been from final range firing at the factory prior to shipping. Refer to section 12.3 *Cleaning and Lubricating* on page 62 for instructions on cleaning the pistol.

9.2 MANUAL SAFETY

The Raider uses the P365's manual safety, if so equipped. The manual safety mechanically blocks the sear assembly, preventing the release of the striker.

To engage the manual safety, rotate the manual safety lever upward. The manual safety is ambidextrous. Pressing up on the lever from either side will rotate the opposite lever upward, engaging the manual safety. The slide can be manipulated with the manual safety engaged.



MANUAL SAFETY ENGAGED



MANUAL SAFETY DISENGAGED



9.3 LOADING THE MAGAZINE

CAUTION

DO NOT ATTEMPT TO INSERT MORE CARTRIDGES THAN THE MAGAZINE'S DESIGNED CAPACITY.

NOTE

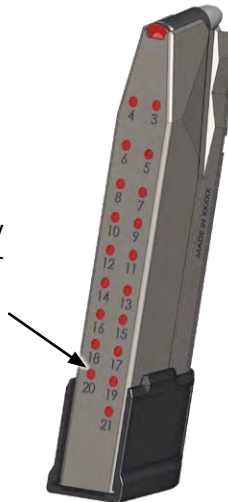
Ensure that the magazine is the proper type and caliber for the pistol.

1. Press down on the magazine follower using the cartridge case rim. Ensure that the bullet is facing the front of magazine.



2. Push the cartridge to the rear and under the magazine lips.
3. Repeat until the magazine holds the desired number of cartridges or is full. Do not attempt to insert more cartridges than the magazine's designed capacity.

Capacity
Indicator
Window



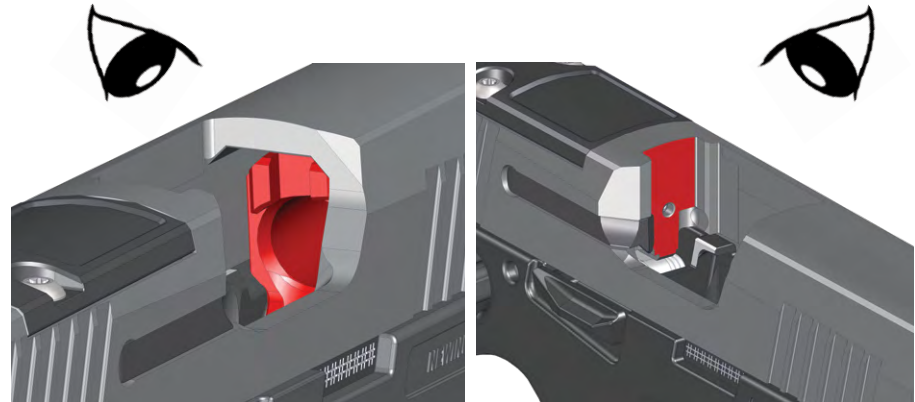


9.4 LOADING THE PISTOL

1. Point the pistol in a safe direction. Engage the manual safety, if so equipped.
2. Fully retract the slide and lock it to the rear by pushing up on the slide catch/release lever.



3. Visually and physically inspect the chamber to ensure that it is clear.
4. Inspect the breech face and magazine well for any foreign debris or ammunition.





5. Insert a loaded magazine, pushing it up into the magazine well until it locks in place. An audible click will be heard.



6. Release the slide by either:
- Pressing down on the slide catch/release lever, releasing the slide forward and chambering a cartridge.
 - Pulling back on the slide until the slide catch/release lever drops clear of the slide then releasing it to chamber a cartridge. Do not ride the slide forward. Failure to properly complete this step may induce a stoppage.



WARNING LOADED PISTOL



THE PISTOL IS NOW LOADED AND READY TO FIRE.



9.5 OPTIONAL FRONT MAGAZINE STORAGE

The Raider has an optional front magazine storage for easy reloading capability.

1. Load a second magazine.
2. Insert a magazine into the front storage slot until it locks in place.



Eject Magazines

1. To eject only the front magazine press the front magazine release button half way.
2. To eject both front and rear magazines, press the front magazine release button completely inward.





9.6 RELOADING DURING SHOOTING – DEPLETED MAGAZINE

NOTE

When the last cartridge in the magazine is expended, the slide will be locked back in the open position by the slide catch/release lever.

1. Engage the manual safety, if so equipped.
2. Press the rear magazine release to remove the empty magazine.



3. Insert a loaded magazine, making sure it is locked into the grip module.





4. Release the slide by either:
- Pressing down on the slide catch/release lever.
 - Pulling back and releasing the slide.



WARNING LOADED PISTOL



THE PISTOL IS NOW LOADED AND READY TO FIRE.

9.7 RELOADING DURING SHOOTING – PARTIAL MAGAZINE

NOTE

A magazine does not need to be empty to be removed.

- Keep the muzzle pointed in a safe direction.
- Engage the manual safety, if so equipped.





3. Press the rear magazine release to remove the loaded magazine.

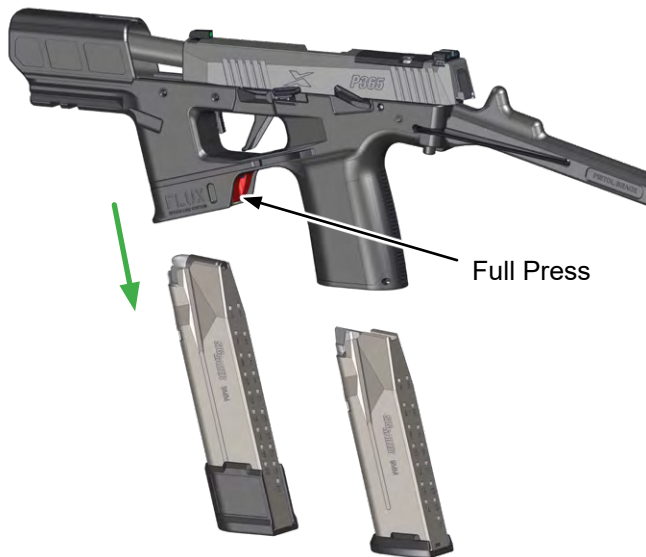
**WARNING****LOADED PISTOL****THE PISTOL IS STILL LOADED AND READY TO FIRE.**

4. Insert a loaded magazine by pushing it up and into the magazine well until it locks in place. An audible click will be heard.





5. For a fast reload, press the front magazine release while holding the stored magazine.



10.0 FIRING



WARNING LOADED FIREARM



KEEP FINGERS OUT OF TRIGGER GUARD AND OFF THE TRIGGER UNTIL READY TO FIRE. ALWAYS ENSURE FIREARM IS POINTED IN A SAFE DIRECTION. FAILURE TO COMPLY MAY RESULT IN SERIOUS INJURY OR DEATH.

1. With the muzzle pointed in a safe direction, press the brace deployment button when shooting with a brace. If the brace does not fully deploy, pivot it rearward until an audible click is heard.
2. Aim the pistol at a safe target and disengage the manual safety, if so equipped.
3. Place a finger on the trigger and pull the trigger rearward to discharge.
4. Keep the pistol aimed at the target and continue to fire as desired or until the magazine is empty.
5. Engage the manual safety, if so equipped.
6. To unload and clear proceed to section 11.0 *Unloading and Clearing the Pistol* on page 44.



11.0 UNLOADING AND CLEARING THE PISTOL

When the chamber has a live cartridge, it will discharge if the safeties are disengaged and the trigger is pulled. It is absolutely essential to completely unload and clear the pistol when it is not in use.



WARNING UNLOAD/CLEAR



FAILURE TO ENSURE THE FIREARM IS UNLOADED AND CLEARED COULD RESULT IN UNINTENTIONAL DISCHARGE, CAUSING SERIOUS INJURY, DEATH, OR PROPERTY DAMAGE.

1. Always make sure the muzzle is pointed in a safe direction.
2. Clear the chamber after the magazine has been removed.
3. Check the firearm twice, both visually and physically.

11.1 UNLOADING THE PISTOL (MAGAZINE NOT EMPTY, SLIDE CLOSED)

1. Keep the muzzle pointed in a safe direction and engage the manual safety, if so equipped.
2. Press the rear magazine release and remove the magazine.

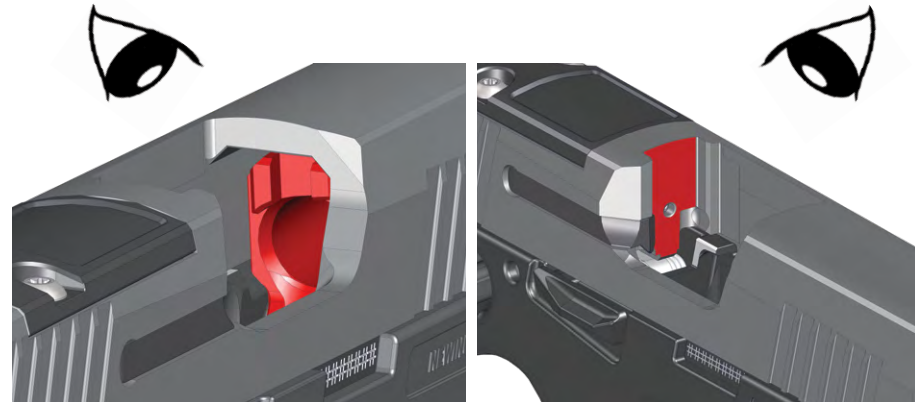




3. Pull the slide completely to the rear while watching for the ejection of a live cartridge. Push up on the slide catch/release lever to lock the slide open.



4. Visually and physically check the chamber, magazine well, and breech face to ensure that the pistol is completely free of ammunition.



5. Press the slide catch/release lever, to close the slide.

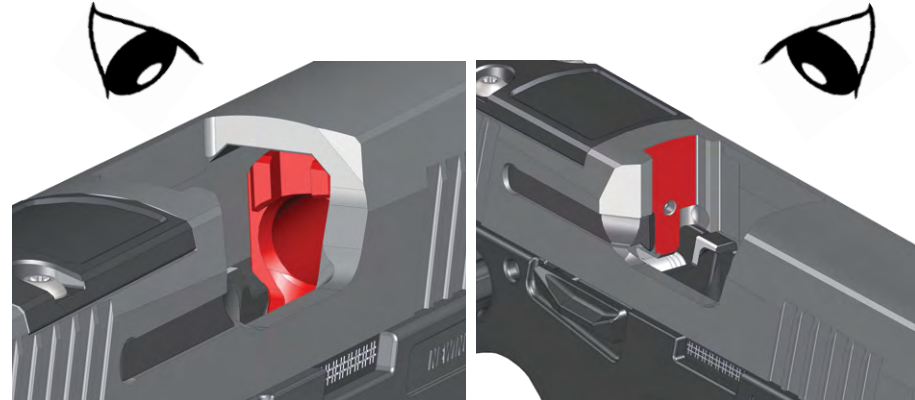


11.2 UNLOADING THE PISTOL (MAGAZINE EMPTY, SLIDE OPEN)

1. Keep the muzzle pointed in a safe direction and engage the manual safety, if so equipped.
2. Press the rear magazine release and to remove the magazine.



3. Visually and physically check the chamber, magazine well, and breech face to ensure the pistol is completely free of ammunition.



4. Press the slide catch/release lever, to close the slide.



5. Fold the brace by pressing the brace release button and simultaneously swinging in the brace until it locks into place with an audible click.



12.0 OPERATOR-LEVEL AUTHORIZED PREVENTATIVE MAINTENANCE



WARNING UNLOAD/CLEAR



FAILURE TO ENSURE THE FIREARM IS UNLOADED AND CLEARED COULD RESULT IN UNINTENTIONAL DISCHARGE, CAUSING SERIOUS INJURY, DEATH, OR PROPERTY DAMAGE.

12.1 DISASSEMBLY OF RAIDER BRACE

1. Unload/Clear the pistol. See *11.0 Unloading and Clearing the Pistol on page 44* for unload/clear procedures.
2. Rotate the safety lever from SAFE to FIRE to facilitate removal of the FCU.



3. Deploy the brace by pushing on the brace deployment button on the right side of the chassis.



4. Lock the slide to the rear by pulling the slide rearward and pushing up on the slide catch/release lever.



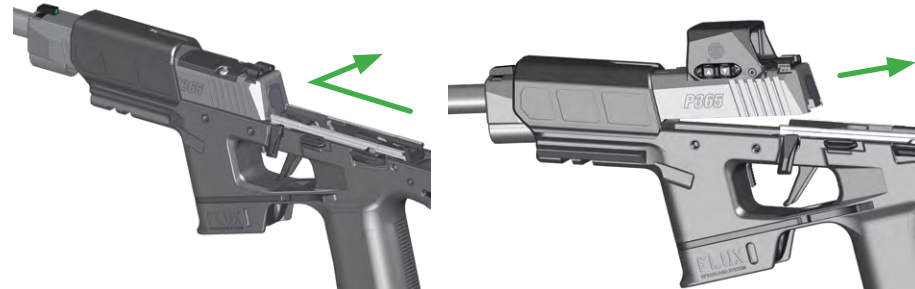


5. Rotate the takedown lever clockwise until it stops.

**WARNING PARTS UNDER SPRING TENSION**

FIREARMS CONTAIN SEVERAL SPRING-LOADED PARTS. WEAR EYE PROTECTION AND MAINTAIN CONTROL DURING MAINTENANCE. FAILURE TO COMPLY MAY RESULT IN INJURY.

6. Pull the slide slightly rearward to disengage the slide catch/release lever while maintaining control of the slide assembly.
7. Guide the complete slide assembly (slide, barrel, recoil spring, and guide) forward and off the frame then lift the rear of the slide to clear the frame and pull back and off the chassis. Set aside for further disassembly.





8. Remove the FCU retaining pin from the chassis by pushing it out with a 3/32" punch.



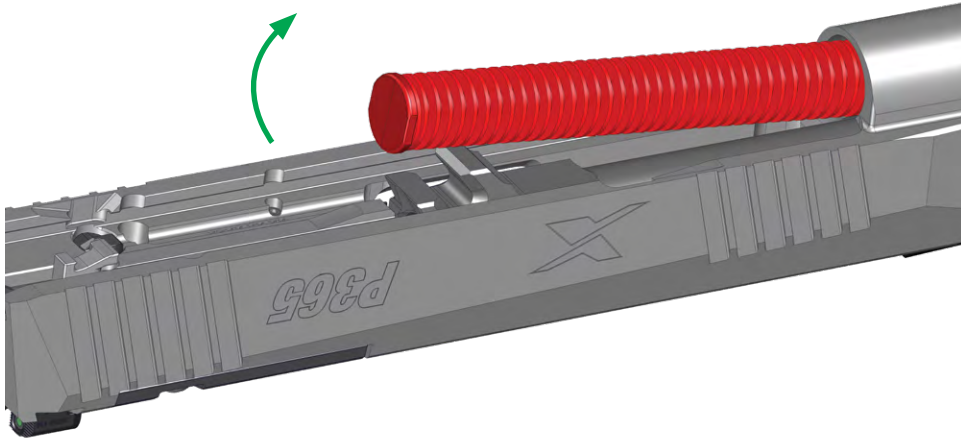
9. Pull the FCU out from the chassis.

**CAUTION**

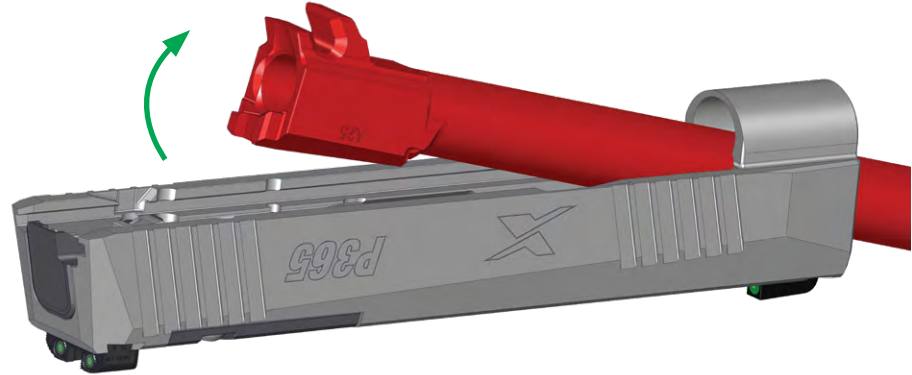
NO FURTHER DISASSEMBLY OF THE FIRE CONTROL UNIT (FCU) IS AUTHORIZED.



10. Push the recoil spring guide forward slightly and then lift it from the rear to remove it from the slide.



11. Remove the barrel from the slide by pulling it upward slightly and to the rear.

**NOTE**

This level of disassembly is sufficient to allow a thorough cleaning after firing.



12.2 MAGAZINE DISASSEMBLY

1. Locate the bottom of the magazine floorplate.



WARNING PARTS UNDER SPRING TENSION

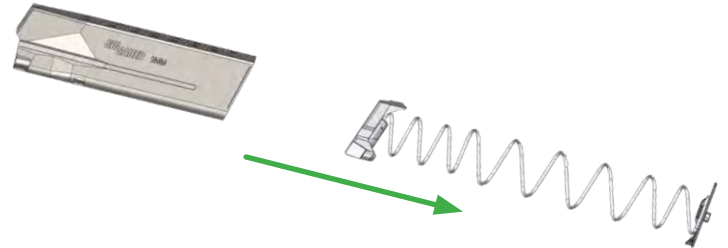


FIREARMS CONTAIN SEVERAL SPRING LOADED PARTS. WEAR EYE PROTECTION AND MAINTAIN CONTROL DURING MAINTENANCE. FAILURE TO COMPLY MAY RESULT IN INJURY.

2. Using a punch or similar tool, push the tab of the magazine insert forward then down to release the floorplate.



3. Remove the magazine follower and magazine spring from the magazine tube.





12.3 CLEANING AND LUBRICATING



WARNING CLEANING



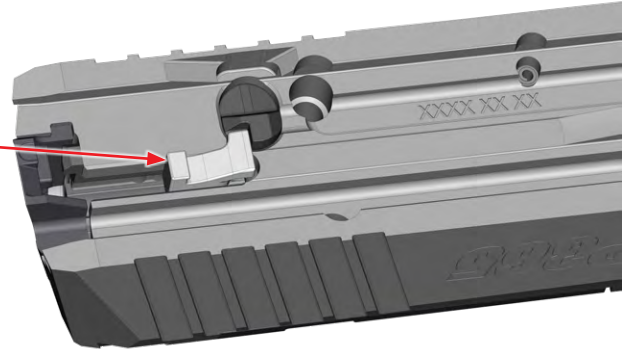
READ AND FOLLOW THE MANUFACTURER'S WARNINGS BEFORE USING SOLVENTS OR CLEANERS. USE IN A WELL-VENTILATED AREA. WEAR EYE PROTECTION.

CAUTION

NEVER CLEAN THE BARREL FROM THE MUZZLE END. DO NOT USE A STEEL WIRE BRUSH AS IT CAN DAMAGE THE SMOOTH SURFACE OF THE BARREL. USE A SUITABLE CLEANING ROD AND BRONZE BRUSH OF THE CORRECT CALIBER. SOLVENTS CAN BE HARMFUL TO THE SURFACE FINISH OF THE PISTOL. AVOID OVER-LUBRICATION OF THE COMPONENTS.

CAUTION

DO NOT LUBRICATE THE STRIKER OR ALLOW LUBRICANT TO FLOW INTO THE STRIKER CHANNEL OF THE SLIDE. THIS MAY CAUSE A LIGHT STRIKE TO THE CARTRIDGE RESULTING IN A FAILURE TO FIRE.





MATERIALS REQUIRED

- Cleaning patches
- Cleaning cloth
- Bore brush of the proper caliber
- Cleaning rod
- CLP (Cleaning, Lubricant, Preservative)
- Lubricant, Low Temperature when applicable
- Cleaning brush

The following instructions are for normal environmental conditions. Clean and lube before or after every day the pistol is fired or at a minimum of every 500 rounds. The compensator (if installed) does not need to be removed for routine maintenance and cleaning.

SLIDE ASSEMBLY

1. Remove all of the old lubricant before reapplying.
2. Clean the slide assembly with a cloth. A soft brush and CLP can be used to clean excessive dirt and carbon buildup. Ensure the extractor, rail slots, and breech face are free of dirt and residue.
3. Apply a light coat of CLP to the frame rail slots of the slide.
4. Lightly oil all the external parts.
5. Do not lubricate the striker assembly.

BARREL

1. Soak a patch with CLP and push it through the bore from the chamber end and out past the muzzle.
2. Allow the CLP to soak for several minutes to loosen the residue and soften carbon deposits.
3. Wipe the exterior of the barrel with a cloth soaked in CLP.
4. Repeat step #1.
5. Use the bore brush and a cleaning rod to scrub heavy deposits from the bore.
6. Repeat step #1.
7. Push dry patches through the bore until they come out clean.
8. Lightly oil the bore and chamber if the pistol is to be stored.
9. Always remove any lubricant from the bore prior to firing the pistol.



RECOIL SPRING AND GUIDE ASSEMBLY

The P365 recoil spring and guide assembly is not to be disassembled. It is serviced as a single unit.

1. Clean the recoil spring guide assembly with CLP and a soft brush.
2. After cleaning, apply a light coat of CLP.

RAIDER GRIP MODULE ASSEMBLY

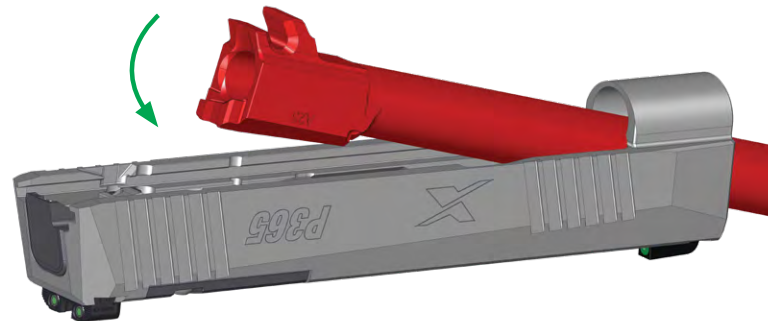
1. Wipe the frame and grip module assembly with a soft cloth.
2. Use cotton swabs to clean hard to reach areas. Pay special attention to the frame rails, takedown lever, and slide catch/release lever.
3. Lubricate the frame rails with a light coat of CLP.
4. Apply CLP to the accessible functioning parts.
5. Clean the magazine well of any dirt, dust, or residue with a soft cloth.

MAGAZINE

1. Wipe the magazine tube and follower with a cloth. Clean the magazine tube and follower with a soft brush and CLP.
2. Use a cloth to clean the magazine spring, floorplate, and base plate.
3. Apply a light coat of CLP to the spring and magazine tube.

12.4 PISTOL ASSEMBLY

1. Verify that the barrel is clear of all foreign matter.
2. Insert the barrel into the slide.



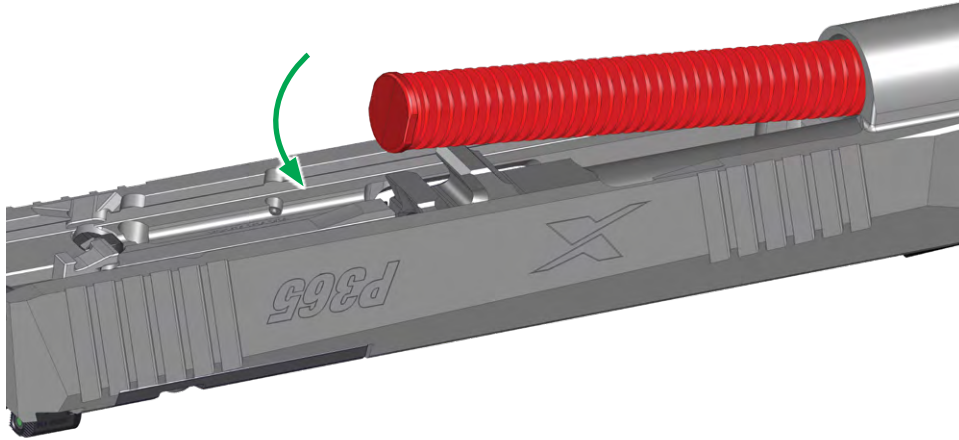
WARNING PARTS UNDER SPRING TENSION



FIREARMS CONTAIN SEVERAL SPRING LOADED PARTS. WEAR EYE PROTECTION AND MAINTAIN CONTROL DURING MAINTENANCE. FAILURE TO COMPLY MAY RESULT IN INJURY.



3. Insert the recoil spring guide assembly into the slide.



4. Fold out the brace by pushing the brace deployment button on the right side of the chassis.





5. Insert the FCU into the rear of the chassis, starting with the trigger first.



6. Press down on the frame rails and pivot the FCU into position.

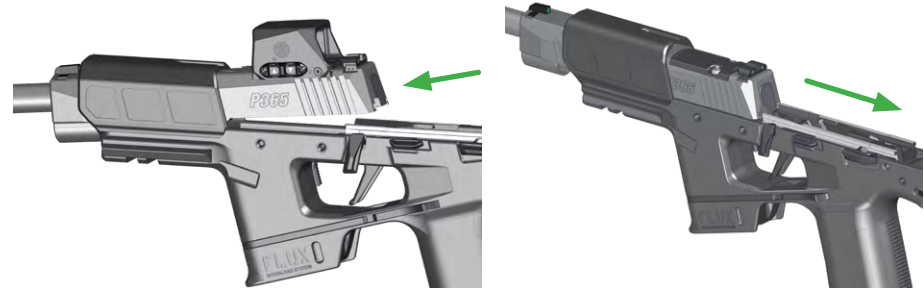




7. Insert the FCU retaining pin into the chassis until it clicks in place.



8. Guide the slide onto the frame rails from the front. With a shroud, install by putting the barrel in through the back of the shroud until the back of the slide clears the frame. Guide the slide onto the frame rails.





9. Retract the slide fully to the rear. Engage the slide catch/release lever to lock the slide in the open position.



10. Rotate the takedown lever counterclockwise until it's horizontal.





11. Press the slide catch/release lever to release the slide.

12. Engage the manual safety, if so equipped.



12.5 MAGAZINE ASSEMBLY

1. Orient the magazine follower on the magazine spring and insert them into the bottom of the magazine tube.

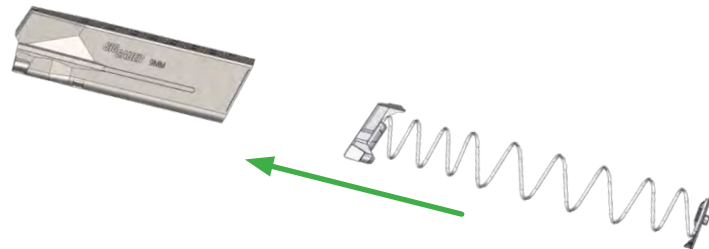


WARNING PARTS UNDER SPRING TENSION



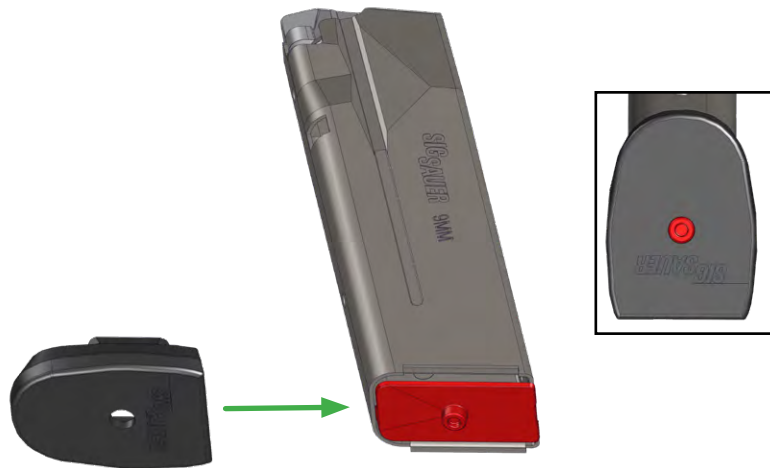
FIREARMS CONTAIN SEVERAL SPRING LOADED PARTS. WEAR EYE PROTECTION AND MAINTAIN CONTROL DURING MAINTENANCE. FAILURE TO COMPLY MAY RESULT IN INJURY.

5. Insert the magazine spring fully into the magazine tube until the magazine insert is flush with the magazine tube bottom.





6. Holding the magazine insert in place, slide the magazine floorplate onto the magazine tube lips until the magazine floorplate is locked in place by the magazine insert.



13.0 FUNCTION CHECK

The function check is performed on the assembled pistol to verify functionality. It should be performed after the completion of maintenance and after each cleaning and assembly of the pistol.



WARNING UNLOAD/CLEAR



FAILURE TO ENSURE THE FIREARM IS UNLOADED AND CLEARED COULD RESULT IN UNINTENTIONAL DISCHARGE, CAUSING SERIOUS INJURY, DEATH, OR PROPERTY DAMAGE.

AFTERMARKET TRIGGERS SHOULD NOT BE USED WITH A P365 EQUIPPED WITH A FLUX RAIDER GRIP MODULE, AS THEY MAY INTERFERE WITH PROPER OPERATION OF THE MECHANICAL SAFETY. INSTALLATION OF ANY AFTERMARKET PARTS WILL VOID THE WARRANTY OF THE SIG SAUER FIREARM.

1. Ensure the magazine is removed and the pistol is unloaded and cleared.
2. Insert an empty magazine into the rear magazine well until it locks into place. An audible click will be heard.
3. Push the magazine release slider on left side of chassis forward to release the magazine. It should fall free.
4. Insert an empty magazine into the front storage magazine well.



5. Press the front magazine release button halfway to release the front magazine.
6. Insert two empty magazines into both the forward storage and rear magazine wells.
7. Press the front magazine release fully to drop both magazines at the same time.
8. Insert an empty magazine into the rear magazine well and pull back on the slide to lock it to the rear. Eject the magazine.
9. Press down firmly on the slide catch/release lever. Slide should return to the closed position.
10. Push up on the manual safety lever to engage the safety, if so equipped.
11. Pull the trigger. The striker should NOT be released. Release the trigger.
12. Press down on the manual safety lever to disengage the safety, if so equipped.
13. Pull the trigger to the rear and HOLD. The striker should release and an audible click will be heard.
14. With the trigger still pulled to the rear, pull the slide completely to the rear and release.
15. Release the trigger. A light audible click as the striker resets will be heard.
16. Pull the trigger. The striker should release and an audible click will be heard.
17. Pull back on slide and release, then push up on the manual safety lever to engage the safety, if so equipped.

14.0 OPTIONAL STOCKS

The Raider makes it easy to swap from the pistol brace to the short barreled rifle (SBR) stock for registered NFA firearms. Installing the stock only involves a few components to do so.



WARNING

BEFORE INSTALLING THE SHORT BARRELED RIFLE STOCK, ENSURE TO FOLLOW ALL LOCAL, STATE, AND FEDERAL LAWS AND GUIDELINES. MODIFYING A PISTOL TO A SHORT BARRELED RIFLE BY ADDING THIS STOCK MAKES IT A CONTROLLED NATIONAL FIREARMS ACT (NFA) FIREARM REGULATED BY THE BUREAU OF ALCOHOL, TOBACCO, FIREARMS AND EXPLOSIVES (BATFE). THE FIREARM REQUIRES REGISTRATION AND A TAX STAMP PAYED BEFORE THE STOCK CAN BE INSTALLED. FAILURE TO COMPLY CAN RESULT IN SEVERE PENALTIES INCLUDING FINES AND/OR IMPRISONMENT.





14.1 REMOVE RAIDER BRACE

1. Press the brace deployment button to swing out the pistol brace.



2. Disconnect the bungee from the brace arm.

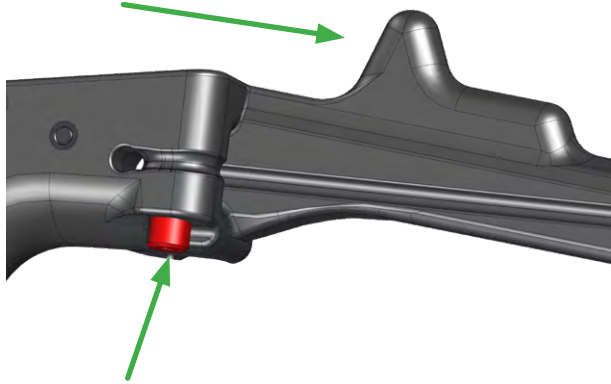


3. Using a T10 Torx bit remove the pivot screw holding the brace in.



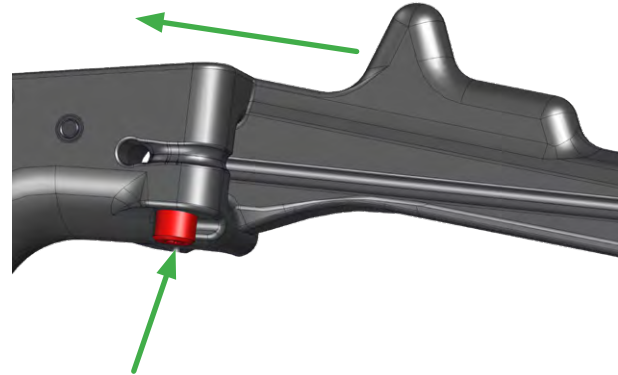


4. Press the brace release button to remove the brace from the chassis.



14.2 INSTALL OPTIONAL STOCK

1. Press the brace release button to install the stock onto the chassis.





2. Using a T10 Torx bit install the screw to hold the stock in.



3. Reconnect the bungee to the stock arm.



14.3 REMOVE BRACE DEPLOYMENT BUTTON



WARNING PARTS UNDER SPRING TENSION



FIREARMS CONTAIN SEVERAL SPRING LOADED PARTS. WEAR EYE PROTECTION AND MAINTAIN CONTROL DURING MAINTENANCE. FAILURE TO COMPLY MAY RESULT IN INJURY.

The brace deployment button can be removed to increase the brace deployment speed when removing from a holster.

1. Remove the loading magazine.
2. Loosen the deployment button screw using a T10 Torx bit.





3. Remove the nut from the magazine well. The deployment button and parts will detach.



15.0 REMOVE SHROUD

The shroud can be removed to attach a suppressor to the barrel.

1. Remove both bottom screws from chassis using a T10 Torx bit.





2. Slide the shroud off of the slide.



16.0 MAGAZINES



17 ROUND



21 ROUND



25 ROUND



17.0 STORAGE AND TRANSPORTATION

17.1 STORAGE



WARNING SAFETY



NEVER PLACE OR STORE ANY FIREARM IN SUCH A MANNER THAT IT MAY BE DISLODGED. FIREARMS SHOULD ALWAYS BE STORED, LOCKED, UNLOADED, SEPARATE FROM THEIR AMMUNITION, AND INACCESSIBLE TO CHILDREN AND ANY OTHER UNAUTHORIZED PERSON. THE USE OF A LOCKING DEVICE OR SAFETY LOCK IS ONLY ONE ASPECT OF RESPONSIBLE FIREARMS STORAGE. FAILURE TO PROPERLY STORE FIREARMS MAY CAUSE SERIOUS INJURY OR DEATH TO SELF OR OTHERS, OR PROPERTY DAMAGE.

SHORT-TERM STORAGE (90 DAYS OR LESS)

1. Ensure that the chamber and magazine do not contain live ammunition.
2. Clean the bore and chamber.
3. Apply a light coat of CLP to the chamber and bore.
4. Apply a light coat of CLP to all the other metal surfaces for corrosion protection.

LONG-TERM STORAGE (90 DAYS OR LONGER)

1. Ensure that the pistol is thoroughly cleaned.
2. Apply a heavy coat of CLP to the chamber and bore.
3. Apply a heavy coat of CLP to all the other metal surfaces for corrosion protection.
4. Wrap the firearm with a waterproof material (MIL-B-121 or similar).
5. Place the firearm in a corrosion resistant barrier bag (MIL-DTL-117 or similar).

ENVIRONMENTAL STORAGE

Provide humidity control to limit the relative humidity to no greater than 40% relative humidity (RH) at 80°F (26.7°C). If personnel will be working in these areas, design to 68°F (20.0°C) dry bulb and 40% RH for indoor design heating conditions, and 75°F (23.9°C) dry bulb and 40% RH for indoor design cooling conditions.



17.2 TRANSPORTATION



WARNING

REFER TO THE TRANSPORTING SECTION OF THE SAFETY WARNINGS MANUAL.

IT IS THE OWNERS RESPONSIBILITY TO FAMILIARIZE THEMSELVES WITH THE LAWS OF ANY JURISDICTION(S) THEY ARE PLANNING TO TRAVEL TO AND THROUGH WITH THE FIREARM.

When transporting the firearm to and from shooting activities, keep it unloaded for safety purposes. When storing the firearm for transportation, keep it separated from ammunition, under lock and key, and out of the reach of children and other inexperienced or unauthorized persons.

If transporting the firearm in a vehicle, ensure that it is secured within the confines of the vehicle. Should the vehicle become involved in an accident, the firearm could become dislodged and move about the interior of the vehicle or be ejected from the vehicle.

18.0 REPLACEMENT PARTS POLICY



WARNING

IT IS THE PURCHASER'S RESPONSIBILITY TO BE ABSOLUTELY CERTAIN THAT ANY PARTS ORDERED FROM THE FACTORY ARE CORRECTLY FITTED AND INSTALLED. FIREARMS ARE COMPLICATED MECHANISMS AND IMPROPER FITTING OF PARTS MAY RESULT IN A DANGEROUS MALFUNCTION, DAMAGE TO THE FIREARM, AND SERIOUS INJURY TO THE SHOOTER AND OTHER PERSONS. THE PURCHASER AND INSTALLER OF THE PARTS MUST ACCEPT FULL RESPONSIBILITY FOR THE CORRECT ADJUSTMENT AND FUNCTIONING OF THE FIREARM AFTER SUCH INSTALLATION.

Parts Policy

Our Service Department maintains a full complement of replacement parts. Even though most gunsmiths have the knowledge, training, and the ability to make necessary repairs to the firearm, the skill and workmanship of any particular third-party gunsmith is totally beyond our control.

Should the firearm ever require service, we strongly recommend that its returned to SIG SAUER Inc. A firearm is a precision instrument and some replacement parts will require individual fitting to ensure correct operation. A wrong part, improper fitting, or incorrect mechanical adjustment may result in an unsafe condition or dangerous malfunction, damage



to the firearm, or cause possible serious injury to the shooter or others. IF ANY PART IS ORDERED WITHOUT RETURNING THE FIREARM TO SIG SAUER, Inc. the customer bears full responsibility for ensuring that the part supplied is correct for their particular firearm and is properly installed and fitted by a qualified gunsmith.

SIG SAUER INC. IS NOT RESPONSIBLE FOR THE FUNCTIONING OF ANY FIREARM IN WHICH REPLACEMENT PARTS ARE INSTALLED BY OTHERS.

THE USE OF AFTERMARKET PARTS IS NOT AUTHORIZED AND WILL VOID THE WARRANTY OF THIS FIREARM. THE REPLACEMENT OF ORIGINAL EQUIPMENT MANUFACTURER (OEM) SIG SAUER PARTS WITH AFTERMARKET PARTS IS UNAUTHORIZED AND IN SOME INSTANCES COULD ALTER THE FUNCTION OF THE FIREARM, CREATING A DANGER TO THE OPERATOR.

Scan the QR code below for the Small Parts Shopper page at sigsauer.com.



19.0 TROUBLESHOOTING GUIDE



WARNING STOPPAGE



STOP FIRING IMMEDIATELY. UNLOAD AND CLEAR THE FIREARM.

A stoppage is an interruption in the pistol's cycle of function that can be cleared by the operator taking immediate action. Immediate action consists of steps taken by the operator to place the pistol back in service without investigating the cause of the stoppage.

Immediate action:

1. Keep the firearm pointed in a safe direction.
2. Unload and clear the firearm immediately by removing the magazine, locking the slide to the rear, and clearing any ammunition from the firearm.
3. Visually and physically checking the chamber, breech face, and magazine well.

With the firearm unloaded and cleared, perform an additional visual inspection of the firearm and the ammunition. If a bore obstruction exists, refer to section *19.1 Obstructed Bore on page 98*. If damage to the firearm is found, the stoppage persists, or a malfunction is suspected, take the firearm to a certified SIG SAUER Armorer for service.



19.1 OBSTRUCTED BORE



WARNING OBSTRUCTED BORE



STOP FIRING IMMEDIATELY AND KEEP THE FIREARM POINTED IN A SAFE DIRECTION. UNLOAD AND CLEAR THE FIREARM. DO NOT FIRE ANOTHER ROUND UNTIL THE OBSTRUCTION IS CLEARED. FAILURE TO COMPLY CAN RESULT IN SERIOUS INJURY OR DEATH TO THE OPERATOR AND/OR OTHERS AND CATASTROPHIC DAMAGE TO THE FIREARM.

Immediately stop shooting, keep the pistol pointed in a safe direction whenever:

- There is difficulty or unusual resistance in chambering a cartridge;
- A cartridge misfires (does not go off);
- The mechanism fails to extract a fired cartridge case;
- Unburned grains of propellant powder are discovered spilled in the mechanism;
- A shot sounds weak or abnormal.

It is possible that a bullet is lodged part-way down the barrel. If a bullet is in the bore, do not attempt to shoot it out by using another cartridge or by blowing it out with a blank or a cartridge from which the bullet has been removed. Firing a subsequent bullet into the obstructed barrel can damage the firearm and cause serious injury to the shooter or bystanders. Bullets can become lodged in the barrel when the cartridge has been improperly loaded without propellant powder, the powder fails to ignite, or the bullet was not properly seated in the cartridge case.

If it is suspected that a bullet is obstructing the barrel, immediately unload and clear the firearm. Field strip the firearm and look through the bore of the barrel. It is not sufficient to merely look in the chamber; a bullet may be lodged some distance down the barrel where it cannot easily be seen. Attempt to remove the bullet by tapping it out with a cleaning rod. If the bullet can be removed, clean any unburned powder grains from the bore, chamber, and mechanism before resuming shooting. If the bullet cannot be dislodged by tapping it with a cleaning rod, take the firearm to a certified SIG SAUER Armorer.



19.2 COOK-OFF



WARNING COOK-OFF



COOK-OFF IS DEFINED AS A CHAMBERED CARTRIDGE DETONATING DUE TO THE HEAT OF THE BARREL. FAILURE TO COMPLY WITH THE BELOW LISTED STEPS COULD RESULT IN DEATH, SERIOUS INJURY, OR PROPERTY DAMAGE.

The term Cook-Off refers to thermally induced firing or premature ignition of a cartridge due to heat from a hot breech or barrel, causing the round to spontaneously ignite and fire the pistol when it is not intended. If the pistol stops firing with a live cartridge in the chamber of a hot barrel due to a misfire or stoppage:

1. Keep the pistol pointed in a safe direction.
2. Immediately remove the magazine and chambered cartridge.
3. If the cartridge cannot be removed within 10 seconds, keep pistol pointed in a safe direction and wait at least 15 minutes for the chamber and barrel to cool, then remove the cartridge.

Keep all body parts away from the ejection port while clearing a hot chamber.

19.3 GENERAL STOPPAGES

Stoppage	Cause	Correction
Failure to Feed		
No cartridge fed into chamber. Cartridge partially still in magazine.	Magazine not properly inserted or is deformed or dirty.	Correctly insert magazine or replace magazine.
	Damaged/broken magazine spring.	Replace magazine.
	Relaxed grip/shooter induced.	Increase grip on pistol.
Failure to Chamber		
Cartridge is free from magazine but not fully seated into chamber.	Dirty chamber.	Clean chamber.
	Damaged ammunition.	Replace ammunition.
	Weak or broken recoil spring guide assembly.	Return to SIG SAUER for repair.
	Relaxed grip/shooter induced.	Adjust or tighten grip on pistol.



Stoppage	Cause	Correction
Failure to Fire		
Trigger is pulled but no detonation.	Faulty ammunition.	Replace ammunition.
	Slide not fully locked forward.	Pull slide to rear and release.
	Damaged/broken striker assembly.	Return to SIG SAUER for repair.
Failure to Fire		
Trigger is pulled but no detonation.	Magazine not fully inserted on models equipped with magazine disconnect mechanism.	Properly insert magazine into magazine well.
Failure to Extract		
Expend case remains in chamber.	Dirty chamber.	Clean chamber/bore.
	Broken extractor or extractor spring.	Return to SIG SAUER for repair.
Failure to Eject		
Expend case remains in ejection port.	Damaged/broken ejector/slide catch/release lever.	Return to SIG SAUER for repair.

19.4 MINIMIZING STOPPAGES

- Minimize most stoppages by cleaning and lubricating the pistol. See section *12.3 Cleaning and Lubricating on page 62*.
- Cleaning and lubricating the pistol after each range session will reduce the chances of a stoppage due to dirt and residue buildup.
- Perform maintenance if the firearm is exposed to extreme environmental conditions (rain, snow, freezing temperatures, etc.).
- Periodically inspect the pistol if it is to be stored for extended periods of time without use.
- Most stoppages are directly related to the magazine. Perform maintenance on the magazines as well as the firearm. See section *12.2 Magazine Disassembly on page 60*.
- A good practice is to mark the magazines so that they can be identified when related to a stoppage.

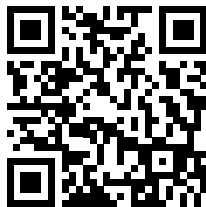


20.0 FACTORY REPAIR OF THE FIREARM

For any questions or concerns regarding the performance or serviceability of the firearm, there are three ways to contact Customer Service:

Before contacting Customer Service, have the firearm's serial number readily available.

1. Call us at (603) 610-3000, choose option 1.
2. Email Customer Service at CustomerService@sigsauer.com.
3. Go to <https://www.sigsauer.com/customer-support> to message customer service electronically. Scan the QR code below for the Customer Support page at [sigsauer.com](https://www.sigsauer.com).



20.1 RETURNING FIREARMS FOR REPAIR

Do not ship the firearm until an RMA number has been provided by Customer Service.



WARNING DO NOT SHIP AMMUNITION



BEFORE SHIPPING ANY FIREARM, BE ABSOLUTELY CERTAIN THAT THE FIREARM AND MAGAZINES ARE UNLOADED. DO NOT SHIP AMMUNITION WITH A FIREARM.

1. The RMA number allows SIG SAUER to track the status of the return from its receipt at SIG SAUER through its return to the owner.
2. Ensure that the chamber and magazine(s) are unloaded and that no ammunition is included with the returned firearm.
3. Package the firearm securely to prevent damage. With the exception of extra magazines, do not include any other accessories such as scopes or mounts unless directed to do so.
4. Generally, an individual may ship firearms to the manufacturer for repair or service. Some states and localities, however, prohibit this. If living in such an area, the firearms must be shipped by and returned to a federally licensed firearms dealer.
5. Federal law prohibits persons who do not possess a Federal Firearms License (FFL) from shipping a firearm via the U.S. Postal Service. Any shipment of firearms outside U.S. borders is subject to the export laws of the United States and to the valid laws of the specific country, which must be strictly followed; prior to exporting any firearm seek legal counsel.



6. SIG SAUER is not responsible for any firearm until it is received, nor for damage incurred during shipment.
7. Ship the firearms insured and prepaid (we do not accept collect shipments) to the address provided by Customer Service.

SIG SAUER® INFINITE GUARANTEE™

For warranty information on any new SIG SAUER firearm, scan the QR code below. This leads to the SIG SAUER Warranty Information and Registration page on our website. Go there to be able to register the new firearm and find information about our warranty.

**FLUX™**

fluxdefense.com

FLUX Defense LLC.
2618 S 900 W, South Salt Lake, UT 84119



sigsauer.com

**SIG SAUER, Inc.
72 Pease Boulevard, Newington, NH 03801 USA**

All trademarks, service marks, trade names, trade dress, product names, and logos appearing in this manual are the property of their respective owners. No trademark or service mark appearing in this manual may be used without written consent of the mark's owner.