

SIGSAUER®



SIG AIR™ SUPER TARGET®

AIRGUN PRECISION ENTRY LEVEL TARGET PISTOL

OPERATOR'S MANUAL: HANDLING & SAFETY INSTRUCTIONS

READ THE INSTRUCTIONS AND WARNINGS IN THIS MANUAL CAREFULLY
BEFORE USING THIS AIRGUN.

DO NOT DISCARD THIS MANUAL.

THIS MANUAL SHOULD ALWAYS ACCOMPANY THIS AIRGUN AND BE TRANSFERRED WITH IT
UPON CHANGE IN OWNERSHIP, OR WHEN THE AIRGUN IS PRESENTED TO ANOTHER PERSON.





WARNING

1.0 SAFETY WARNINGS

READ THIS OWNER'S MANUAL COMPLETELY. DO NOT BRANDISH OR DISPLAY THIS AIRGUN IN PUBLIC. IT MAY BE CONFUSING TO PEOPLE AND MAY BE A CRIME. POLICE AND OTHERS MAY THINK THIS AIRGUN IS A FIREARM. DO NOT USE OR CARRY THE AIRGUN IN SITUATIONS WHERE IT COULD BE MISTAKEN FOR A FIREARM. THIS AIRGUN IS NOT A TOY. TREAT IT WITH THE SAME RESPECT YOU WOULD A FIREARM. ALWAYS CAREFULLY FOLLOW THE SAFETY DIRECTIONS FOUND IN THIS OWNER'S MANUAL AND KEEP THIS MANUAL IN A SAFE PLACE FOR FUTURE USE. MISUSE OR CARELESS USE MAY CAUSE SERIOUS INJURY, ESPECIALLY TO THE EYE. THE USE OF THIS AIRGUN IS NOT RECOMMENDED FOR PERSONS UNDER 18 YEARS OF AGE. MAY BE DANGEROUS UP TO 275 YARDS (250 METERS).

BASIC RULES OF SAFE AIRGUN HANDLING

ALWAYS treat every Airgun as if it were loaded.

ALWAYS point Airgun in a safe direction.

ALWAYS be sure of your backstop, what lies beyond, and the safety of bystanders before you shoot.

DO NOT brandish, tamper with, or attempt to alter Airgun in any way. Actions may result in injury, especially to the eye.

ALWAYS be sure of your backstop, what lies beyond, and the safety of bystanders before you shoot.

ALWAYS use clean, dry, original factory-made ammunition of the proper type and caliber for your Airgun.

ALWAYS wear ear protection and safety glasses when shooting.

ALWAYS carry your Airgun so that you can control the direction of the muzzle if you fall or stumble.

NEVER shoot at a flat surface or water.

DO NOT leave an unattended Airgun loaded. Airguns and ammunition should be stored separately, locked if possible, beyond the reach of children, careless adults, and unauthorized users.

NEVER allow your Airgun to be used by anyone who has not read and understood this operator's manual.

DO NOT point any Airgun, loaded or unloaded, at any undesired target.

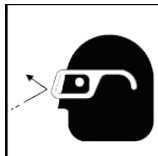
NEVER discharge your Airgun near an animal unless it is trained to accept the noise: an animal's startled reaction could injure it or cause an accident.

ALWAYS be sure that the barrel is clear of any obstruction.

NEVER drink alcoholic beverages or take drugs before or during shooting, as your vision and judgment could be seriously impaired, making your Airgun handling unsafe.



1.1 EYE PROTECTION



Always wear safety glasses that meet the requirements of American National Standards Institute (ANSI) z87.1 and ear plugs whenever you are shooting. Always make certain that persons close to you are similarly protected. If you wear prescription or reading glasses that do not meet this ANSI rating, be sure to wear safety glasses over your corrective glasses.



1.2 PROP 65 WARNING

This product can expose you to chemicals including lead, which is known to the state of California to cause cancer and birth defects or other reproductive harm. For more information go to www.P65Warnings.com

1.3 ADULT MATCH TRIGGER PISTOL



THIS IS A MATCH PRECISION AIRGUN AS DEFINED BY ASTM F589. IT IS EXEMPT FROM THE 3LB (1,35 KG.) MINIMUM TRIGGER PULL, SAFETY MECHANISM AND DROP TEST REQUIREMENT. IMPROPER ADJUSTMENT CAN LEAD TO THE GUN FIRING IF DROPPED.

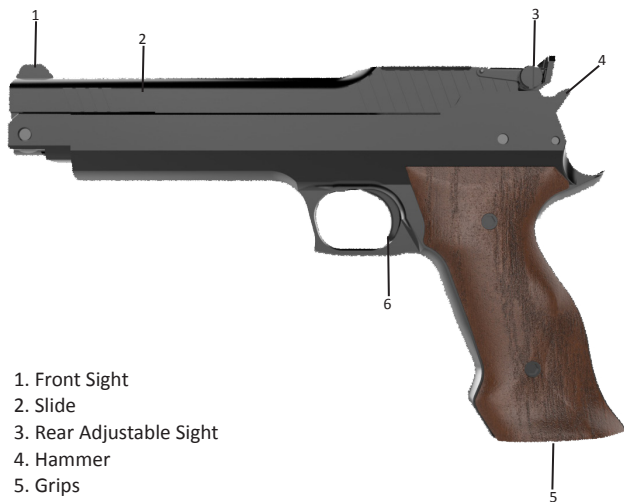
TABLE OF CONTENTS

1.0 SAFETY WARNINGS.....	2
2.0 Description of Airgun.....	4
3.0 Adjusting the Trigger.....	5
4.0 Cocking and Loading.....	6
5.0 Sighting and Aiming.....	7
6.0 Firing the Pistol.....	8
7.0 Unloading the Pistol.....	8
8.0 Clearing a Jam.....	8
9.0 Sights.....	9
10.0 Storage.....	10
11.0 Cleaning and Maintenance.....	10
12.0 Returns and Shipping.....	11
13.0 SIG SAUER® Limited Warranty.....	11



WARNING

2.0 Description of Airgun

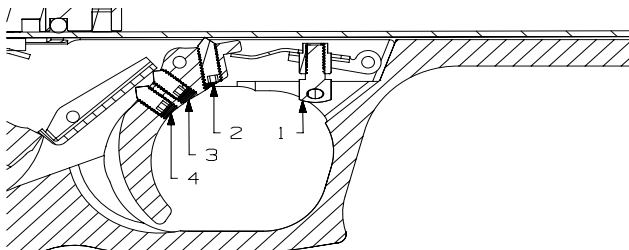




3.0 Adjusting the Trigger

Understand before firing! Small adjustments will make a noticeable change to the operation of the trigger. Only make 1/4 turn adjustments at a time and test fire the airgun before making further adjustments. The trigger is two stage with adjustments on both stages. Be aware that adjustment to one screw will effect the adjustment of the others and the trigger will only work properly if there is the correct balance between all screws. If you have no experience in adjusting two stage triggers seek guidance or leave the trigger as set by the factory. Incorrect adjustment can make the airgun unsafe. Never adjust the weight of the trigger below 1000g.

1. Screw 1 is the trigger weight adjustment. This will increase/decrease the pull weight of the trigger. Turn clockwise to increse/counterclockwise to decrease - using an 1/8" allen wrench
2. Screw 2 is the position of the trigger: adjusting how far forward or backward the trigger sits within the trigger guard. Turn clockwise for a longer stroke(positioning trigger forward), counterclockwise for a shorter stroke(positioning trigger farther to the rear).
3. Screws 3 and 4 are the first and second stage adjustments. To adjust the first stage use screw no. 3. Turn clockwise to lengthen or coutnerclockwise to shorten the stroke or drop point of the trigger, which is the position right before the trigger comes to a stop-this stop is called the wall. To adjust the second stage use screw no. 4. This is where the release at the drop point or wall happens. Turn clockwise for longer release-counterclockwise for shoter release.



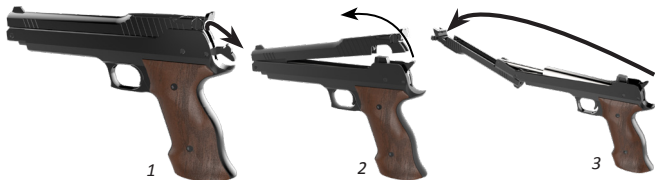
4.0 Cocking and Loading

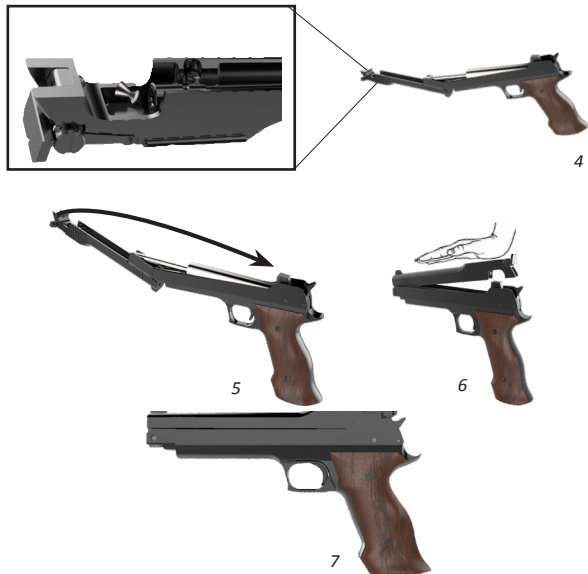
CAUTION

ALWAYS BE CERTAIN YOU ARE USING THE CORRECT SIZE (CALIBER) PELLET FOR YOUR AIR PISTOL. REFER TO THE MARKINGS ON YOUR AIR PISTOL TO CONFIRM THE CORRECT PELLET SIZE. NEVER REUSE AMMUNITION. **BE AWARE OF PINCH POINTS AND KEEP FINGERS OUT OF CLOSING LOCATION BETWEEN SLIDE AND FRAME**

NOTE: For best results use .177 cal (4.5mm) Flat Head Match pellets under 8 grains in weight.

1. Pull back on hammer and hold to rear. Fig1.
2. Firmly grip slide and swing to fully open position. Fig2/3.
3. Insert a single .177 caliber pellet into barrel. Fig 4.
4. Steadily press top of slide down to frame. Slide will lock back into place Fig 5/6
5. Gun is now ready to fire Fig 7.





5.0 Sighting and Aiming



To be a consistent marksman, use the correct sight picture each time you fire the pistol.

FOR BEST RESULTS – USE SIG SAUER .177 CAL MATCH LEAD PELLETS

FOR BEST RESULTS – USE A 6 O’CLOCK HOLD

6.0 Firing the Pistol



WARNING LOADED PISTOL



DO NOT TOUCH THE TRIGGER UNTIL YOU ARE ACTUALLY READY TO FIRE THE AIRGUN. ALWAYS ASSUME AIRGUN IS LOADED. DO NOT POINT IN ANY DIRECTION THAT IS UNSAFE OR HARMFUL TO PERSON OR PROPERTY.

Be sure you and anyone near are wearing safety glasses to protect eyes. Make certain that there is a clear, unobstructed path towards target.

1. Aim the pistol at a safe target. Be certain the backstop and beyond are safe targets.
2. Place finger on the trigger and press trigger to discharge.
3. Once ready, safely reload by following steps in section "4.0 Cocking and Loading"

7.0 Unloading the Pistol

1. This is a Single shot pistol with no safety or magazine. To unload, the pistol must be fired - Aim in a safe direction at a safe backstop and pull the trigger.
2. Pistol is now unloaded and is to be stored in a safe place when not in use. **DO NOT STORE IN A COCKED OR LOADED CONDITION. KEEP OUT OF REACH OF CHILDREN.**

IF AIRGUN FAILS TO UNLOAD OR A JAM OCCURS, REFER TO SECTION "8.0 CLEARING A JAM"

8.0 Clearing a Jam

If ammunition fails to eject from the muzzle, follow steps 1 and 2 in section "4.0 Cocking and Loading"

Once slide is open, use a .177 caliber rod or similar sized tool and start at rear sight end of slide (chamber end of barrel). Slowly work rod/tool through barrel and fully out muzzle end. After obstruction has cleared barrel,

reference section "11.0 Cleaning and Maintenance" before firing a new round.

9.0 Sights

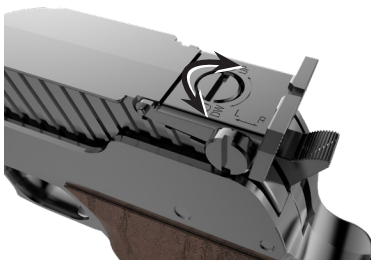
9.1 Windage (Left/Right) Adjustment

Using appropriate sized flat head screwdriver rotate screw as indicated on the slide: clockwise or counterclockwise for Rear Sight adjustment



9.2 Elevation (Up/Down) Adjustment

Using same flat head screwdriver, rotate top screw in the direction indicated on the slide to adjust rear sight Up or Down



10.0 Storage

Any airgun should be stored so that it is protected from unauthorized use, including use by children. Always store in a clean, dry place. Before storing the airgun, make sure it is unloaded, and not cocked or pressurized. It is recommended to store the airgun in such a manner to protect against theft and misuse.

Always store this Super Target pistol unhinged from hammer and broke open slightly.

When removing from storage - be sure to dry fire this Super Target pistol 3-5 times before use, ensuring elasticity and proper function of the seals.

11.0 Cleaning and Maintenance

Proper maintenance and cleaning of this airgun are essential to the function, use, and longevity of product

Cosmetic surface cleaning: Use soft cloth and PTFE or silicone to wipe surface and sights

Barrel: For consistent and proper function - clean barrel with felt pad or pellet. For more aggressive cleaning, use abrasive superintenseive material.

DO NOT use any type of brush to clean or flush barrel

Every 100 shots you should fire 4-5 felt pellets.

Every 3000 shots-apply a small amount of grease on the piston rod.

SPECIFIC AIRGUN PRODUCTS:

- Napier Power Airgun Oil for outer surfaces
- Napier 3034-A Airgun Grease for piston and polymer materials

12.0 Return and Shipping

If you have any questions concerning the performance or return of your airgun please write or call:

SIG SAUER, Inc. Attention: Customer Service

18 Industrial Drive

Exeter, NH 03833

Phone: (603) 610-3000, option 1 Fax: (603) 610-3004

In the event you need to return your airgun to the SIG SAUER Service Department, here's what to do:

1. First contact Customer Service at (603) 610-3000, option 1 for a Return Merchandise Authorization (RMA) number, which will allow SIG SAUER to track the status of your return from its receipt at SIG SAUER through its return to you.
2. Make sure that the airgun is unloaded, and not cocked.
3. Package the airgun securely in the original box or a hard case to prevent damage during shipping. Enclose a letter that includes a detailed description of the problem you have experienced or the work you want performed.
4. SIG SAUER is not responsible for any airgun until it is received, nor for damage incurred during shipment.
5. Ship your airgun insured and prepaid (we do not accept collect shipments) to:

SIG SAUER, Inc.

Attention: Service Department

18 Industrial Drive

Exeter, NH 03833

DO NOT FORGET TO WRITE YOUR RMA NUMBER ON THE PACKAGE.

13.0 SIG SAUER LIMITED WARRANTY

SIG SAUER warrants that the enclosed AIRSOFT/AIRGUN/AIR ACCESSORY product was originally manufactured free of defects in material, workmanship, and mechanical function. For the applicable periods listed below, SIG SAUER agrees to correct any defect in the product for the original purchaser by repair, adjustment, or replacement, at SIG SAUER's option, with the same or comparable quality components (or by replacing the product at SIG SAUER's option); provided however, that the product is returned unloaded and freight prepaid to SIG SAUER at 18 Industrial Drive, Exeter, NH, 03833.

Limited Warranty Applicable Periods:

- SIG SAUER® AIR ONE Airsoft Models – Thirty (30) days from date of purchase
- SIG SAUER® PROFORCE Airsoft Models – Ninety (90) days from date of purchase
- SIG SAUER® AIRGUN Models (non-HUNTER models) – One-hundred and eighty (180) days from date of purchase
- SIG SAUER® HUNTER AIRGUN Models – One (1) year from date of purchase
- SIG SAUER® AIR ACCESSORIES – Sixty (60) days from date of purchase

Proof of purchase will be required with any request for warranty repair. This limited warranty is null and void if the product has been misused, damaged (by accident or otherwise), fired with improper ammunition, fired with an obstruction in the barrel, damaged through failure to provide reasonable and necessary maintenance as described in the manual accompanying the product, or if unauthorized repair or any alteration, including of a cosmetic nature, has been performed on the product. This limited warranty does not apply to normal wear and tear of any parts.

Subject to the foregoing, this limited warranty confers the right to have the covered product or its parts repaired, adjusted, or replaced exclusively upon the original purchaser, which right is not transferable to any other person.

ANY WARRANTIES IMPLIED BY LAW, INCLUDING ANY IMPLIED WARRANTIES OF MERCHANTABILITY OR FITNESS FOR A PARTICULAR PURPOSE, ARE EXPRESSLY DISCLAIMED. REPAIR, ALTERATION, OR REPLACEMENT AS PROVIDED HEREIN IS YOUR EXCLUSIVE REMEDY FOR ANY DEFECTIVE PRODUCT. IN NO EVENT SHALL SIG SAUER OR ANY COMPANY AFFILIATED WITH SIG SAUER BE LIABLE FOR ANY SPECIAL, INCIDENTAL, OR CONSEQUENTIAL DAMAGES OF ANY KIND ARISING OUT OF THE PURCHASE OR USE OF THIS PRODUCT, WHETHER BASED UPON CONTRACT, TORT, STATUTE, OR OTHERWISE. Some states do not allow the exclusion or limitation of implied warranties, or the exclusion or limitation of incidental or consequential damages, so some or all of the above limitations or exclusions may not apply to you. This warranty gives you specific legal rights, and you may also have other rights which vary from State to State.

THIS WARRANTY APPLIES TO U.S. COMMERCIAL CUSTOMERS ONLY, AND DOES NOT APPLY TO GOVERNMENT, MILITARY, LAW ENFORCEMENT, OR NON-US CUSTOMERS. NON-US CUSTOMERS SHOULD CONTACT THEIR LOCAL DEALER OR DISTRIBUTOR FOR APPLICABLE WARRANTY COVERAGE.

SIG SAUER®

SIG SAUER, Inc. • 72 Pease Boulevard • Newington, NH 03801 USA • +1 (603)
610-3000

An ISO 9001:2015 Certified Company. Manufacturing in the U.S.A.
sigsauer.com

P/N 5700721 REV 01