

2019 GLOBAL DEFENSE

PRODUCT CATALOG



SIG SAUER, Inc. • 72 Pease Boulevard • Newington, NH 03801 USA • +1 (603) 610-3000
An ISO 9001:2015 Certified Company. Manufacturing in the U.S.A.

SIGSAUER[™]
NEVER SETTLE

All trademarks, service marks, trade names, trade dress, product names and logos appearing in this catalog are the property of their respective owners. No trademark or service mark appearing in this catalog may be used without the prior written consent of the owner.

MKT0478 REV01

sigsauer.com

ADVANCED WEAPON SYSTEMS FOR DEFENSE AND LAW ENFORCEMENT

At SIG SAUER our mission is to provide elite end users with the complete weapons system they need to prevail under any circumstance. By combining industry-leading product innovation, with decades of battle-tested experience, we have engineered the world's toughest, most accurate, most precise, and most dependable, pistols, rifles, electro-optics, suppressors, and ammunition available. Designed and built in the U.S.A. and ready to perform whenever and wherever the need arises.

SIG SAUER
NEVER SETTLE

TABLE OF CONTENTS

| PISTOLS | |
|-----------------------------|----|
| P320 | 5 |
| P365 | 11 |
| P226 | 13 |
| P229 | 15 |
| SP2022 | 17 |
| RIFLES | |
| SIG MCX | 19 |
| SIG MCX RATTLER | 23 |
| SIG MPX | 25 |
| SIG516 | 27 |
| SIG716 DMR | 29 |
| SIG716 | 31 |
| SIGM400 | 33 |
| AMMUNITION | |
| 35 | |
| ELECTRO-OPTICS | |
| 37 | |
| SUPPRESSORS | |
| 43 | |
| ULTIMATE TRAINING MUNITIONS | |
| 45 | |
| SIG SAUER ACADEMY | |
| 47 | |

P320[®]

THE MOST ADAPTABLE PISTOL EVER.

SERIALIZED, STAINLESS STEEL FRAME

Unique design gives you the freedom to change calibers, sizes, and fit - quickly and easily.



1. CONVERT CALIBERS:

9mm / .40 S&W

2. CHANGE SIZE:

Full-Size / Carry / Compact

3. CHOOSE GRIP FIT:

Large / Medium / Small



Interchangeable grip modules provide optimal grip circumference without adding a bulky backstrap.

EXCEPTIONAL TRIGGER

A smooth, crisp trigger pull and short tactile reset deliver heightened accuracy.

SAFETY WITHOUT COMPROMISE

- Striker Safety
- Disconnect Safety
- 3-Point Takedown Safety
 1. Remove magazine
 2. Lock slide to rear
 3. Rotate take-down lever for disassembly without tools or trigger manipulation

THE STRIKER-FIRED STANDARD IN MODULARITY AND ADAPTABILITY.

SLIDE ASSEMBLY



SUPPRESSOR HEIGHT SIGHTS

PARTS LIST

Serialized Stainless Steel Frame

SLIDE ASSEMBLIES

Full-Size
Compact/Carry

BARRELS

119.38 mm / 4.7" Full-Size
99.0 mm / 3.9" Compact/Carry
109.22 mm / 4.3" Compact
Carry 91.4 mm / 3.6" XCompact

GRIP MODULES

Compact S/M/L
Carry S/M/L
Full-Size S/M/L

MAGAZINES

Compact
Full-Size/Carry
Extended
(18 Rounds - 40 S&W)
(21 Rounds - 9mm)



AVAILABLE WITH MANUAL SAFETY



AVAILABLE WITH FLAT TRIGGER

BARRELS



SERIALIZED STAINLESS STEEL FRAME

MAGAZINES



COMPACT
15 ROUNDS

CARRY / FULL
17 ROUNDS

EXTENDED
21 ROUNDS

GRIP MODULES



COMPACT



CARRY



FULL-SIZE



XCOMPACT



XCARRY



XFULL-SIZE

Available in Coyote

| SPECIFICATIONS | FULL-SIZE | CARRY | COMPACT |
|----------------------|-----------------|-----------------|-----------------|
| OVERALL LENGTH | 205 mm / 8.1" | 182 mm / 7.2" | 182 mm / 7.2" |
| OVERALL HEIGHT | 139 mm / 5.5" | 139 mm / 5.5" | 134 mm / 5.3" |
| BARREL LENGTH | 119 mm / 4.7" | 99 mm / 3.9" | 99 mm / 3.9" |
| SIGHT RADIUS | 167 mm / 6.6" | 147 mm / 5.8" | 147 mm / 5.8" |
| WEIGHT WITH MAGAZINE | 836 g / 29.5 oz | 751 g / 26.5 oz | 731 g / 25.8 oz |

ALL SPECIFICATIONS SUBJECT TO CHANGE | VISIT SIGSAUER.COM FOR ADDITIONAL INFORMATION

P320®

THE CHOSEN ONE

Selected as the official sidearm of the U.S. Army for its uniquely innovative modularity, uncompromising performance, and unmatched capability - the M17 has redefined the definition of the combat handgun forever.



M17

NEW

P320 M17 MS

9mm

- ▶ Coyote Full-Size Slide / Carry Grip
- ▶ 119 mm / 4.7" Barrel
- ▶ Night Sight Rear Plate w/SIGLITE® Front
- ▶ Manual Safety
- ▶ Black Controls
- ▶ 17 Round Magazine (Optional 21 Round Magazine)
- ▶ Available without Manual Safety
- ▶ Loaded Chamber Indicator

Available in Black



NEW

P320® M18

9mm

- ▶ Coyote Compact Slide / Carry Grip
- ▶ 99 mm / 3.9" Barrel
- ▶ Night Sight Rear Plate w/SIGLITE® Front
- ▶ 17 Round Magazine (Optional 21 Round Magazine)
- ▶ Manual Safety
- ▶ Black Controls
- ▶ Loaded Chamber Indicator

Available in Black



P320 XCARRY

9mm

- ▶ Compact Slide / XCARRY Grip
- ▶ 99 mm / 3.9" Barrel
- ▶ Night Sight Rear Plate w/X-RAY3® Front
- ▶ Optional Magwell and Grip Weight Available
- ▶ 17 Round Magazine (Optional 21 Round Magazine)
- ▶ Loaded Chamber Indicator
- ▶ Optional Curved Trigger
- ▶ Available with Dovetail Sights and Optic Cover Plate



NEW

P320 XCOMPACT

9mm

- ▶ XCOMPACT Grip Module
- ▶ X-RAY3™ Day/Night Sights
- ▶ Night Sight Rear Plate, Optic Ready
- ▶ 91 mm / 3.6" Barrel
- ▶ 15 Round Magazine
- ▶ Loaded Chamber Indicator
- ▶ Optional Curved Trigger
- ▶ Available with Dovetail Sights and Optic Cover Plate



P320 XFULL

9mm

- ▶ XCARRY Grip Module
- ▶ X-RAY3™ Day/Night Sights
- ▶ Night Sight Rear Plate, Optic Ready
- ▶ 119 mm / 4.7" Barrel
- ▶ 17 Round Magazine (Optional 21 Round Magazine)
- ▶ Loaded Chamber Indicator
- ▶ Optional Curved Trigger
- ▶ Available with Dovetail Sights and Optic Cover Plate

| SPECIFICATIONS | M17 | M18 | XCARRY | XCOMPACT | XFULL |
|-------------------|-------------------|-------------------|-------------------|-------------------|-------------------|
| OVERALL LENGTH | 203 mm / 8.0" | 188 mm / 7.4" | 188 mm / 7.4" | 178 mm / 7.0" | 208 mm / 8.2" |
| OVERALL HEIGHT | 140 mm / 5.5" | 140 mm / 5.5" | 140 mm / 5.5" | 134 mm / 5.3" | 140 mm / 5.5" |
| OVERALL WIDTH | 40.6 mm / 1.6" | 33.0 mm / 1.3" | 33.0 mm / 1.3" | 33.0 mm / 1.3" | 33.0 mm / 1.3" |
| BARREL LENGTH | 119 mm / 4.7" | 99 mm / 3.9" | 99 mm / 3.9" | 91 mm / 3.6" | 119 mm / 4.7" |
| SIGHT RADIUS | 167 mm / 6.6" | 147 mm / 5.8" | 147 mm / 5.8" | 140 mm / 5.5" | 167 mm / 6.6" |
| WEIGHT (WITH MAG) | 0.84 kg / 29.5 oz | 0.76 kg / 27.0 oz | 0.76 kg / 27.0 oz | 0.72 kg / 25.3 oz | 0.84 kg / 29.5 oz |
| MAG CAPACITY | 17 RDS | 17 RDS | 17 RDS | 15 RDS | 17 RDS |

ALL SPECIFICATIONS SUBJECT TO CHANGE | VISIT SIGSAUER.COM FOR ADDITIONAL INFORMATION

P320®

MODULAR HANDGUN SYSTEM

The state-of-the-art SIG SAUER P320 has quickly become one of the most sought after pistols on the market today. With unprecedented modularity, and unmatched capabilities, the P320 is the choice of the military and law enforcement across the globe.



P320 FULL SIZE

9mm / 40 S&W

- ▶ Modular Striker-Fired Pistol
- ▶ Full-Size Slide / Full-Size Grip
- ▶ SIGLITE® Night Sights or Contrast Sights Available
- ▶ 17 (9mm) / 14 (40S&W) Round Magazine
- ▶ 119 mm / 4.7" Barrel



P320® CARRY

9mm / 40 S&W

- ▶ Modular Striker-Fired Pistol
- ▶ Compact Slide / Full Length Grip
- ▶ SIGLITE® Night Sights or Contrast Sights Available
- ▶ 17 (9mm) / 14 (40S&W) Round Magazine
- ▶ 99 mm / 3.9" Barrel



P320 COMPACT MS

9mm / 40 S&W

- ▶ Modular Striker-Fired Pistol
- ▶ Compact Slide and Grip
- ▶ SIGLITE® Night Sights or Contrast Sights Available
- ▶ 15 (9mm) / 13 (40S&W) Round Magazine
- ▶ 99 mm / 3.9" Barrel
- ▶ Manual Safety



P320 COMPACT

9mm / 40 S&W

- ▶ Modular Striker-Fired Pistol
- ▶ Compact Slide and Grip
- ▶ SIGLITE® Night Sights or Contrast Sights Available
- ▶ 15 (9mm) / 13 (40S&W) Round Magazine
- ▶ 99 mm / 3.9" Barrel

| SPECIFICATIONS | FULL SIZE | CARRY | COMPACT MS | COMPACT |
|-------------------|---------------------------|---------------------------|---------------------------|---------------------------|
| OVERALL LENGTH | 203 mm / 8.0" | 183 mm / 7.2" | 183 mm / 7.2" | 183 mm / 7.2" |
| OVERALL HEIGHT | 140 mm / 5.5" | 140 mm / 5.5" | 134 mm / 5.3" | 134 mm / 5.3" |
| OVERALL WIDTH | 33.0 mm / 1.3" | 33.0 mm / 1.3" | 33.0 mm / 1.3" | 33.0 mm / 1.3" |
| BARREL LENGTH | 119 mm / 4.7" | 99 mm / 3.9" | 91 mm / 3.9" | 91 mm / 3.9" |
| SIGHT RADIUS | 167 mm / 6.6" | 147 mm / 5.8" | 147 mm / 5.8" | 147 mm / 5.8" |
| WEIGHT (WITH MAG) | 0.84 kg / 29.5 oz | 0.75 kg / 26.5 oz | 0.73 kg / 25.8 oz | 0.73 kg / 29.8 oz |
| MAG CAPACITY | 17 RDS (9mm), 14 RDS (40) | 17 RDS (9mm), 14 RDS (40) | 15 RDS (9mm), 13 RDS (40) | 15 RDS (9mm), 13 RDS (40) |

ALL SPECIFICATIONS SUBJECT TO CHANGE | VISIT SIGSAUER.COM FOR ADDITIONAL INFORMATION

P365[®]

EVERYDAY CARRY WITH 10+1 FULL-SIZE CAPACITY

Introducing the game changing P365 concealed carry pistol. This high capacity micro-compact pistol is smaller and lighter than other pistols in its class. The P365 is a striker-fired pistol with the clean, crisp trigger pull you expect from SIG, and features a high-capacity, patented modified double-stack magazine for a 10+1 full-size capacity, with 12-round factory made magazines available for 13-round capacity.



P365 NITRON[®] MICRO-COMPACT

9mm

- ▶ NITRON[®] Stainless Steel Slide
- ▶ Front Cocking Serrations
- ▶ X-RAY3[™] Day/Night Sights
- ▶ 3.1" Barrel
- ▶ Includes (1) 10rd Flush Fit Magazine and (1) 10rd Extended Magazine
- ▶ Only 1" Wide
- ▶ 69 mm / 3.1" Barrel



NEW

P365 MANUAL SAFETY

9mm

- ▶ NITRON[®] Stainless Steel Slide
- ▶ Ambidextrous Manual Safety
- ▶ Front Cocking Serrations
- ▶ X-RAY3[™] Day/Night Sights
- ▶ 69 mm / 3.1" Barrel
- ▶ Includes (1) 10rd Flush Fit Magazine and (1) 10rd Extended Magazine

| SPECIFICATIONS | P365 |
|-------------------|--|
| OVERALL LENGTH | 148 mm / 5.8" |
| OVERALL HEIGHT | 109 mm / 4.3" |
| OVERALL WIDTH | 25.4 mm / 1.0" |
| BARREL LENGTH | 69 mm / 3.1" |
| SIGHT RADIUS | 124 mm / 4.9" |
| WEIGHT (WITH MAG) | 0.50 kg / 17.8 oz |
| MAG CAPACITY | 10+1 RDS (FLUSH FIT, EXT) 12+1 RDS (EXTENDED +) |



144 MM / 5.8"



P365 SMALL SIZE

The revolutionary new concealed carry pistol that gives you more capacity, more concealability, and more capability. It's the one gun you can carry 365 days of the year.



109 MM
4.3"

25.4 MM
1.0"

ALL SPECIFICATIONS SUBJECT TO CHANGE | VISIT SIGSAUER.COM FOR ADDITIONAL INFORMATION

P226[®]

CLASSIC LINE PISTOL

Designed for ultimate performance, carried by elite forces, and proven to be the premier combat pistol.



P226 LEGION BLACK

9mm

- ▶ SAO
- ▶ Nitron[®] Stainless Steel Slide/Frame
- ▶ X-RAY3[™] Day/Night Sights
- ▶ Master Shop Flat Trigger
- ▶ Black G10 Checkered Grips w/Legion Medallion
- ▶ Threaded Barrel Available
- ▶ Chrome Lined DLC Barrel
- ▶ 15 Round Magazine
- ▶ 112 mm / 4.4" Barrel



P226[®] LEGION BLACK

9mm

- ▶ DA/SA
- ▶ Nitron[®] Stainless Steel Slide/Frame
- ▶ X-RAY3[™] Day/Night Sights
- ▶ Grayguns Inc. Designed P-SAIT Trigger
- ▶ 2-Piece G10 Grips w/Medallion
- ▶ Threaded Barrel Available
- ▶ Chrome Lined DLC Barrel
- ▶ 15 Round Magazine
- ▶ 112 mm / 4.4" Barrel



MK25

9mm

- ▶ Anchor Engraving, UID Label
- ▶ Nitron Stainless Steel Slide
- ▶ SIGLITE[®] Night Sights or Contrast Sights Available
- ▶ Corrosion-Resistant Internal Coating
- ▶ Phosphate-Coated Chrome-Lined Barrel
- ▶ 15 Round Magazine
- ▶ 112 mm / 4.4" Barrel



P226 NITRON

9mm / 40 S&W

- ▶ One-Piece Ergonomic Grip
- ▶ Nitron Stainless Steel Slide
- ▶ Alloy Frame
- ▶ SIGLITE[®] Night Sights or Contrast Sights Available
- ▶ 15 (9mm) / 12 (40S&W) Round Magazine
- ▶ 112 mm / 4.4" Barrel



P226 TACOPS

9mm

- ▶ DA/SA
- ▶ Elite Beavertail Frame
- ▶ Nitron Stainless Steel Slide
- ▶ SIGLITE[®] Night Sights
- ▶ Short Reset Trigger
- ▶ 20 Round Magazine
- ▶ 2-Piece Polymer Magwell Grips
- ▶ Threaded Barrel Available
- ▶ Optional Suppressor Height Sights
- ▶ 112 mm / 4.4" Barrel

| SPECIFICATIONS | LEGION BLACK | NITRON | TACOPS | MK25 |
|-------------------|-------------------|----------------------------|-------------------|-------------------|
| OVERALL LENGTH | 196 mm / 7.7" | 203 mm / 8.1" | 203 mm / 8.1" | 203 mm / 8.1" |
| OVERALL HEIGHT | 140 mm / 5.5" | 140 mm / 5.5" | 140 mm / 5.5" | 140 mm / 5.5" |
| OVERALL WIDTH | 38.0 mm / 1.5" | 38.0 mm / 1.5" | 38.0 mm / 1.5" | 38.0 mm / 1.5" |
| BARREL LENGTH | 112 mm / 4.4" | 112 mm / 4.4" | 112 mm / 4.4" | 112 mm / 4.4" |
| SIGHT RADIUS | 160 mm / 6.3" | 160 mm / 6.3" | 160 mm / 6.3" | 160 mm / 6.3" |
| WEIGHT (WITH MAG) | .975 kg / 34.4 oz | .975 kg / 34.4 oz | .975 kg / 34.4 oz | .975 kg / 34.4 oz |
| MAG CAPACITY | 15 RDS (9mm) | 15 RDS (9mm), 12 RDS (.40) | 15 RDS (9mm) | 15 RDS (9mm) |

ALL SPECIFICATIONS SUBJECT TO CHANGE | VISIT SIGSAUER.COM FOR ADDITIONAL INFORMATION

P229[®]

CLASSIC LINE COMPACT PISTOL

Compact reliability that's been trusted by law enforcement professionals for decades.



P229 LEGION BLACK

9mm

- ▶ SAO
- ▶ Nitron[®] Stainless Steel Slide/Frame
- ▶ X-RAY3™ Day/Night Sights
- ▶ Master Shop Flat Trigger
- ▶ Black G10 Checkered Grips w/Legion Medallion
- ▶ Chrome Lined DLC Barrel
- ▶ Available in DA/SA
- ▶ 15 Round Magazine
- ▶ 99 mm / 3.9" Barrel



P229 NITRON[®]

9mm / 357 SIG / 40 S&W

- ▶ One-Piece Ergonomic Grip
- ▶ Nitron Stainless Steel Slide
- ▶ Alloy Frame
- ▶ SIGLITE[®] Night Sights or Contrast Sights Available
- ▶ 15 (9mm) / 12 (40S&W) Round Magazine
- ▶ 99 mm / 3.9" Barrel



M11-A1 NITRON

9mm

- ▶ Two-Piece Grip Plates
- ▶ Nitron Stainless Steel Slide
- ▶ Alloy Frame
- ▶ SIGLITE[®] Night Sights or Contrast Sights Available
- ▶ 15 Round Magazine
- ▶ 99 mm / 3.9" Barrel



| SPECIFICATIONS | LEGION BLACK | NITRON | M11-A1 |
|-------------------|-------------------|---|-------------------|
| OVERALL LENGTH | 180 mm / 7.1" | 180 mm / 7.1" | 180 mm / 7.1" |
| OVERALL HEIGHT | 137 mm / 5.4" | 137 mm / 5.4" | 137 mm / 5.4" |
| OVERALL WIDTH | 38 mm / 1.5" | 38 mm / 1.5" | 38 mm / 1.5" |
| BARREL LENGTH | 99 mm / 3.9" | 99 mm / 3.9" | 99 mm / 3.9" |
| SIGHT RADIUS | 145 mm / 5.7" | 145 mm / 5.7" | 145 mm / 5.7" |
| WEIGHT (WITH MAG) | 0.90 kg / 31.7 oz | 0.90 kg / 31.7 oz | 0.84 kg / 29.6 oz |
| MAG CAPACITY | 15 RDS (9mm) | 15 RDS (9mm), 12 RDS (.357), 12 RDS (.40) | 15 RDS (9mm) |

ALL SPECIFICATIONS SUBJECT TO CHANGE | VISIT SIGSAUER.COM FOR ADDITIONAL INFORMATION

SP2022[®]

POLYMER PISTOL

The first polymer pistol tough enough to be called a SIG with all the Classic Line features.



SP2022 NITRON[®]

9mm / 40 S&W

- ▶ Nitron[®] Stainless Steel Slide
- ▶ Polymer Grip
- ▶ SIGLITE[®] Night Sights
- ▶ 15 (9mm) / 12 (40S&W) Round Magazine
- ▶ 99mm / 3.9" Barrel
- ▶ Available with a Threaded Barrel (9mm Only)
- ▶ Loaded Chamber Indicator
- ▶ Optional Suppressor Height Sights



AVAILABLE WITH A MANUAL SAFETY

 Available in FDE



| SPECIFICATIONS | NITRON | FDE |
|-------------------|----------------------------|----------------------------|
| OVERALL LENGTH | 187 mm / 7.4" | 180 mm / 7.1" |
| OVERALL HEIGHT | 144 mm / 5.7" | 137 mm / 5.4" |
| OVERALL WIDTH | 38 mm / 1.5" | 38 mm / 1.5" |
| BARREL LENGTH | 99 mm / 3.9" | 99 mm / 3.9" |
| SIGHT RADIUS | 149 mm / 5.9" | 145 mm / 5.7" |
| WEIGHT (WITH MAG) | 0.82 kg / 29.0 oz | 0.90 kg / 31.7 oz |
| MAG CAPACITY | 15 RDS (9mm), 12 RDS (.40) | 15 RDS (9mm), 12 RDS (.40) |

ALL SPECIFICATIONS SUBJECT TO CHANGE | VISIT SIGSAUER.COM FOR ADDITIONAL INFORMATION

SIG MCX[®]

MODULAR RIFLE PLATFORM

OPTIONAL ELECTRO-OPTICS

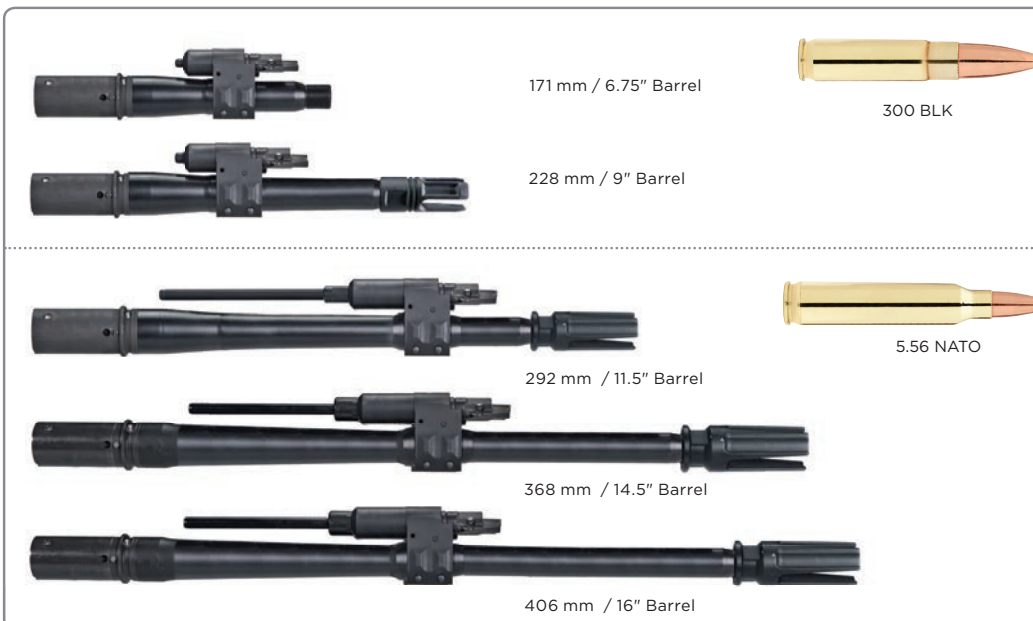
Available in Coyote



Optional TANGO6T[™]
1-6X24MM Scope



Optional ROMEO4T[™]
Closed Red Dot Sight / JULIET4[™] Magnifier



SIG MCX RATTLER CONVERSION KIT

- ▶ Convert Lower SIG MCX Receiver to Rattler Compact Rifle
- ▶ Complete SIG MCX Rattler Upper Receiver Assembly
- ▶ Rattler Minimalist Stock Included



Thin Folding Aluminum Stock

Telescoping / Folding Stock

Visor-Compatible Stock

Collapsible Stock

M4 Collapsible / Folding Stock

Three-Prong QD Flash Hider

9" PDW Handguard [SD Compatible Available]

14.5" SD Handguard

11.5" Handguard [SD Compatible Available]

14.5" Handguard

16" Handguard

SIG MCX AR CONVERSION KIT

- ▶ Convert MIL-SPEC AR Lower Receiver to SIG MCX System
- ▶ Complete SIG MCX Upper Receiver Assembly
- ▶ Lower Receiver Stock Adapter
- ▶ 2-Stage Match Trigger



OPTIONAL SUPPRESSORS



MIL-SRD762-QD (300BLK) Fast Attach | PG. 44



MIL-SRD762 (300BLK) Direct Thread | PG. 44



MIL-SRD556-QD (5.56 NATO) Fast Attach | PG. 44



MIL-SRD556 (5.56 NATO) Direct Thread | PG. 44

ALL SPECIFICATIONS SUBJECT TO CHANGE | VISIT SIGSAUER.COM FOR ADDITIONAL INFORMATION

SIG MCX®

MODULAR RIFLE PLATFORM

The SIG MCX was engineered for the demands of special operations forces by SIG SAUER® for adaptability, sound suppression, and longevity. Cold hammer-forged barrels are user-changeable and available in 5.56 NATO, and 300 Blackout, in 6.75" to 16" lengths, offering the utmost in mission-specific flexibility. The SIG proven internal recoil system offers reduced recoil and a compact platform.

Shown with TANGO6T[™] 1-6X24MM Scope



SIG MCX 16"

5.56 NATO / 300 BLK | 30 ROUNDS

- ▶ Select Fire (Safe, Semi, Full-Auto)
- ▶ 406 mm / 16" Barrel
- ▶ Telescoping/Folding 5-Position Stock



CALIBER
300 BLK

CALIBER
5.56 NATO

Shown with ROMEO4T Closed Red Dot Sight



SIG MCX 11.5"

5.56 NATO | 30 ROUNDS

- ▶ Select Fire (Safe, Semi, Full-Auto)
- ▶ 292 mm / 11.5" Barrel
- ▶ Telescoping/Folding 5-Position Stock



Shown with ROMEO4T Closed Red Dot Sight, JULIET4 Magnifier, MIL-SRD762Ti Suppressor, and TREAD M-LOK™ Handstop Kit

SIG MCX 6.75"

300 BLK | 30 ROUNDS

- ▶ Select Fire (Safe, Semi, Full-Auto)
- ▶ 171 mm / 6.75" Barrel
- ▶ Telescoping/Folding 5-Position Stock
- ▶ M-LOK® Handguard
- ▶ Ambidextrous Charging Handle and Controls
- ▶ 30-Round Magazine
- ▶ Flip-Up Iron Sights

Shown with ROMEO4T Closed Red Dot Sight



SIG MCX 9"

300 BLK | 30 ROUNDS

- ▶ Select Fire (Safe, Semi, Full-Auto)
- ▶ 229 mm / 9" Barrel
- ▶ Telescoping/Folding 5-Position Stock

| | SIG MCX 11.5" | SIG MCX 14.5" | SIG MCX CARBINE 16" | SIG MCX 6.75" | SIG MCX 9" |
|--------------------|-------------------------------------|-----------------|---------------------|-------------------------------------|------------------|
| ACTION TYPE | Select Fire (Safe, Semi, Full-Auto) | | | Select Fire (Safe, Semi, Full-Auto) | |
| AVAILABLE CALIBERS | 5.56 NATO | | | 300BLK | |
| OPERATING SYSTEM | Gas Piston, Rotating Bolt | | | Gas Piston, Rotating Bolt | |
| STOCK | Multiple Configurations | | | Multiple Configurations | |
| FOREND TYPE | M-LOK® | | | M-LOK | |
| WEIGHT W/O MAG | 3.4 kg / 7.4 lb | 3.5 kg / 7.6 lb | 3.6 kg / 7.9 lb | 2.81 kg / 6.2 lb | 2.94 kg / 6.5 lb |
| LENGTH EXTENDED | 787 mm / 31" | 851 mm / 33.5" | 901 mm / 36.5" | 668 mm / 26.3" | 724 mm / 28.5" |
| LENGTH COLLAPSED | 559 mm / 22" | 635 mm / 25" | 673 mm / 26.5" | 439 mm / 17.3" | 495 mm / 19.5" |
| BARREL LENGTH | 292 mm / 11.5" | 368 mm / 14.5" | 406 mm / 16" | 171 mm / 6.75" | 229 mm / 9" |
| RIFLING | 1:7 | 1:7 | 1:7 | 1:5 | 1:5 |
| TRIGGER TYPE | Matchlite™ Duo | | | Matchlite Duo | |
| TRIGGER WEIGHT | 2.0-2.9 kg / 4.5-6 lbs | | | 2.0-2.9 kg / 4.5-6 lbs | |

ALL SPECIFICATIONS SUBJECT TO CHANGE | VISIT SIGSAUER.COM FOR ADDITIONAL INFORMATION

RATTLER

SIG MCX SUBGUN

Developed for elite special forces, the SIG MCX Rattler is the most compact rifle in the world. Capable of firing with stock folded from an overall length of 16", it redefines the standard for concealable firepower.



SIG MCX RATTLER

5.56 NATO | 30 ROUNDS

- ▶ Select Fire (Safe, Semi, Full-Auto)
- ▶ 139.7 mm / 5.5" 5.56 Barrel with 3-Prong Flash Hider
- ▶ Telescoping/Folding 5-Position Stock
- ▶ Flip-Up Iron Sights
- ▶ 30-Round Magazine



CALIBER
5.56 NATO



SIG MCX RATTLER

300 BLK | 30 ROUNDS

- ▶ 139.7 mm / 5.5" 300BLK Barrel with 3-Prong Flash Hider
- ▶ Folding Stock
- ▶ M-LOK® Handguard
- ▶ Ambidextrous Charging Handle and Controls
- ▶ Flip-Up Iron Sights
- ▶ 30-Round Magazine



CALIBER
300 BLK

Shown with ROMEO4T™
Closed Red Dot Sight

| | RATTLER 300 BLACKOUT | RATTLER 556 NATO |
|--------------------|-------------------------------------|-------------------------------------|
| ACTION TYPE | Select Fire (Safe, Semi, Full-Auto) | Select Fire (Safe, Semi, Full-Auto) |
| AVAILABLE CALIBERS | 300BLK | 5.56 NATO |
| OPERATING SYSTEM | Gas Piston, Rotating Bolt | Gas Piston, Rotating Bolt |
| STOCK | Folding Aluminum | Folding Aluminum |
| FOREND TYPE | M-LOK® | M-LOK |
| WEIGHT W/O MAG | 2.7 kg / 6.0 lb | 2.7 kg / 6.0 lb |
| LENGTH EXTENDED | 607 mm / 24.0" | 607 mm / 24.0" |
| LENGTH COLLAPSED | 406 mm / 16.0" | 406 mm / 16.0" |
| BARREL LENGTH | 139.7 mm / 5.5" | 139.7 mm / 5.5" |
| RIFLING | 1:5 | 1:7 |
| TRIGGER TYPE | Matchlite™ Duo | Matchlite Duo |
| TRIGGER WEIGHT | 2.0-2.9 kg / 4.5-6.5 lbs | 2.0-2.9 kg / 4.5-6.5 lbs |

ALL SPECIFICATIONS SUBJECT TO CHANGE | VISIT SIGSAUER.COM FOR ADDITIONAL INFORMATION

SIG MPX®

GAS PISTON SUBGUN

The MPX sets a new standard for performance and quality in the sub-gun category. Featuring AR style controls and a closed bolt piston system, the MPX is designed to fulfill the needs of competitive and professional users alike.

Shown with ROMEO4T™
Closed Red Dot Sight



- SIG MPX® 8" SBR**
9MM | 30 ROUNDS
- ▶ Select Fire (Safe, Semi, Full-Auto)
 - ▶ 203 mm / 8.0" Barrel with A1 Compensator
 - ▶ Telescoping/Folding 5-Position Stock
 - ▶ Aluminum M-LOK® Handguard
 - ▶ Fixed Gas Valve



Shown with ROMEO4T™
Closed Red Dot Sight

| | MPX | MPX K |
|--------------------|--|----------------------|
| ACTION TYPE | Select Fire (Safe, Semi, Full-Auto) | |
| AVAILABLE CALIBERS | 9MM | |
| OPERATING SYSTEM | Closed, Full Locked Bolt, Short-Stroke Piston System | |
| STOCK | Telescoping/Folding 5-Position Stock | |
| FOREND TYPE | M-LOK* | M-LOK |
| WEIGHT W/O MAG | 2.94 kg / 6.5 lb | 2.81 kg / 6.19 lb |
| OVERALL LENGTH | 673 mm / 26.5" | 571 mm / 22.5" |
| FOLDED LENGTH | 520 mm / 20.5" | 444 mm / 17.5" |
| BARREL LENGTH | 203 mm / 8.0" | 114 mm / 8.0" |
| RIFLING | 1:10 | 1:10 |
| TRIGGER WEIGHT | 25-4 kg / 5.5-9.0 lb | 25-4 kg / 5.5-9.0 lb |

SIG MPX K 4.5" SBR

- 9MM | 30 ROUNDS
- ▶ Select Fire (Safe, Semi, Full-Auto)
 - ▶ 114 mm / 4.5" Barrel
 - ▶ Telescoping/Folding 5-Position Stock
 - ▶ Aluminum M-LOK® Handguard
 - ▶ Fixed Gas Valve



CALIBER
9 MM

ALL SPECIFICATIONS SUBJECT TO CHANGE | VISIT SIGSAUER.COM FOR ADDITIONAL INFORMATION

516 G2

PISTON DRIVEN AR PLATFORM

An enhanced AR platform with a clean-running, more reliable operating system, designed for suppressed use.

Shown with TANGO6T[™]
1-6X24MM Scope



SIG516[®] G2 14.5" CARBINE

5.56 NATO | 30 ROUNDS

- ▶ Select Fire (Safe, Semi, Full-Auto)
- ▶ 406 mm / 14.5" Hammer-Forged Barrel
- ▶ MIL-STD 1913 Quad-Rail Handguard
- ▶ 6-Position Adjustable Stock
- ▶ Ambidextrous Controls



Shown with ROMEO4T[™]Closed Red Dot Sight,
JULIET4[™] Magnifier, MIL555-QD Suppressor

SIG516 G2 CQB 11.5"

5.56 NATO | 30 ROUNDS

- ▶ Select Fire (Safe, Semi, Full-Auto)
- ▶ 292 mm / 11.5" Hammer-Forged Barrel
- ▶ MIL-STD 1913 Quad-Rail Handguard
- ▶ 6-Position Adjustable Stock
- ▶ Ambidextrous Controls

Available in
FDE



CALIBER
5.56 NATO

| | 16" PATROL | 14.5" CARBINE | 11.5" CQB |
|--------------------|--|------------------|------------------|
| ACTION TYPE | Select Fire (Safe, Semi, Full-Auto) | | |
| AVAILABLE CALIBERS | 5.56 NATO | | |
| OPERATING SYSTEM | 4-Position Adjustable Short-Stroke Gas Piston System | | |
| STOCK | 6-Position Collapsible Stock | | |
| FOREND TYPE | MIL-STD 1913 Quad Rail Handguard | | |
| WEIGHT W/O MAG | 3.36 kg / 7.4 lb | 3.26 kg / 7.2 lb | 3.13 kg / 6.9 lb |
| LENGTH EXTENDED | 921 mm / 36.3" | 884 mm / 34.8" | 808 mm / 31.8" |
| LENGTH COLLAPSED | 838 mm / 33" | 800 mm / 31.5" | 724 mm / 28.5" |
| BARREL LENGTH | 406 mm / 16.0" | 368 mm / 14.5" | 292 mm / 11.5" |
| RIFLING | 1:7 | | |
| TRIGGER TYPE | MIL-SPEC | | |
| TRIGGER WEIGHT | 2.5 - 4.0 kg / 5.5-9.0 lb | | |

ALL SPECIFICATIONS SUBJECT TO CHANGE | VISIT SIGSAUER.COM FOR ADDITIONAL INFORMATION

716 G2 DMR

DESIGNATED MARKSMAN RIFLE

Developed by the world's most elite shooters, the SIG716G2 delivers accuracy and reliability in a lightweight package.



Shown with TANGO6 3-18 X 44mm Scope, ALPHA2 Tactical Mount, MIL-SRD762Ti-QD

16" DMR

| | |
|--------------------|--|
| ACTION TYPE | Select Fire (Safe, Semi, Full-Auto) |
| AVAILABLE CALIBERS | 7.62x51 NATO |
| OPERATING SYSTEM | Short-Stroke Gas Piston w/ Multi-Position Adjustable Gas Block |
| STOCK | 6-Position Collapsible Magpul® Stock |
| FOREND TYPE | M-LOK® |
| WEIGHT W/O MAG | 3.9 kg / 8.7 lb |
| LENGTH EXTENDED | 1,105 mm / 43.5" |
| LENGTH COLLAPSED | 858 mm / 33.7" |
| BARREL LENGTH | 406 mm / 16" |
| RIFLING | 1:10 |
| TRIGGER TYPE | 2-Stage Match Trigger |
| TRIGGER WEIGHT | 2.0 - 2.9 kg / 4.5 - 6.5 lb |

ALL SPECIFICATIONS SUBJECT TO CHANGE | VISIT SIGSAUER.COM FOR ADDITIONAL INFORMATION

SIG716 G2 DMR 16"

7.62x51 NATO | 20 ROUNDS

- ▶ Semi-Auto
- ▶ 406 mm / 16" Hammer-Forged Barrel
- ▶ Lightweight M-LOK® Handguard
- ▶ Improved Lightweight Design
- ▶ 3-Position Adjustable Gas Valve
- ▶ 2-Stage Match Trigger
- ▶ 20 MOA Top Rail

Available in FDE



CALIBER
7.62X51 NATO

716 G2 PATROL

PISTON DRIVEN AR PLATFORM

An enhanced AR platform with a clean-running, more reliable operating system.



Shown with TANGO6T 1-6 X 24mm Scope, ALPHA2 Tactical Mount

16" PATROL

| | |
|--------------------|--|
| ACTION TYPE | Select Fire (Safe, Semi, Full-Auto) |
| AVAILABLE CALIBERS | 7.62x51 NATO |
| OPERATING SYSTEM | Short-Stroke Gas Piston w/ Multi-Position Adjustable Gas Block |
| STOCK | 6-Position Collapsible Magpul® Stock |
| FOREND TYPE | MIL-STD 1913 M-LOK® Handguard |
| WEIGHT W/O MAG | 3.9 kg / 8.7 lb |
| LENGTH EXTENDED | 1,105 mm / 43.5" |
| LENGTH COLLAPSED | 858 mm / 33.7" |
| BARREL LENGTH | 406 mm / 16" |
| RIFLING | 1:10 |
| TRIGGER TYPE | 2-Stage Match Trigger |
| TRIGGER WEIGHT | 2.0 - 2.49 kg / 4.5 - 6.5 lb |

SIG716 G2 PATROL 16"

7.62x51 NATO | 20 ROUNDS

- ▶ Select Fire (Safe, Semi, Full-Auto)
- ▶ 16-inch Hammer-Forged Barrel
- ▶ Lightweight M-LOK® Handguard
- ▶ Improved Lightweight Design
- ▶ 6-Position Telescoping Stock
- ▶ Ambidextrous Charging Handle
- ▶ 3-Position Gas Valve

Available in FDE



CALIBER
7.62X51 NATO

ALL SPECIFICATIONS SUBJECT TO CHANGE | VISIT SIGSAUER.COM FOR ADDITIONAL INFORMATION

SIGM400®

DIRECT IMPINGEMENT AR PLATFORM

Designed for elite forces and refined by the world's best professional shooters to be the ultimate AR performance rifle.

Shown with Optional Carry Handle



SIGM400® CARBINE 14.5"

5.56 NATO | 30 ROUNDS

- ▶ Select Fire (Safe, Semi, Full-Auto)
- ▶ 14.5" Barrel
- ▶ Classic Polymer Handguard
- ▶ Folding Rear Sight with "F" Marked Front
- ▶ 6-Position Telescoping Stock

Shown with ROMEO4T™ Closed Red Dot Sight



SIGM400 SBR 11.5"

5.56 NATO | 30 ROUNDS

- ▶ Select Fire (Safe, Semi, Full-Auto)
- ▶ 11.5" Barrel
- ▶ Aluminum Quad-Rail Handguard
- ▶ Folding Rear Sight with "F" Marked Front
- ▶ 6-Position Telescoping Stock
- ▶ 30-Round Magazine



Shown with ROMEO4T™ Closed Red Dot Sight

NEW

SIGM400 PRO 14.5"

5.56 NATO | 30 ROUNDS

- ▶ Select Fire (Safe, Semi, Full-Auto)
- ▶ Cold Hammer-Forged 11.5" Barrel
- ▶ Free-Float M-LOK® Handguard
- ▶ Folding Sights
- ▶ 6-Position Telescoping Stock
- ▶ 30-Round Magazine
- ▶ Available in 16" and 11.5" Lengths



CALIBER
5.56 NATO

| | 11.5" PRO | 14.5" PRO | 16" PRO | 14.5" CARBINE | 11.5" SBR |
|--------------------|-------------------------------------|------------------|----------------------------|------------------------|-------------------|
| ACTION TYPE | Select Fire (Safe, Semi, Full-Auto) | | | | |
| AVAILABLE CALIBERS | 5.56 NATO | | | | |
| OPERATING SYSTEM | Direct Impingement Gas | | | | |
| STOCK | 6-Position Collapsible Stock | | | | |
| FOREND TYPE | Free-Float M-LOK® | | Polymer | MIL-STD 1913 Quad Rail | |
| WEIGHT W/O MAG | 3.36 kg / 7.4 lb | 3.36 kg / 7.4 lb | 3.36 kg / 7.4 lb | 3.26 kg / 6.5 lb | 3.13 kg / 6.19 lb |
| LENGTH EXTENDED | 921 mm / 36.3" | 921 mm / 36.3" | 921 mm / 36.3" | 884 mm / 33.3" | 808 mm / 30.3" |
| LENGTH COLLAPSED | 838 mm / 33" | 838 mm / 33" | 838 mm / 33" | 800 mm / 30.0" | 724 mm / 27.0" |
| BARREL LENGTH | 406 mm / 16.0" | 406 mm / 16.0" | 406 mm / 16.0" | 368 mm / 14.5" | 292 mm / 11.5" |
| RIFLING | 1:7 | | | | |
| FOREND TYPE | 2-Stage Match | | MIL-SPEC | | |
| TRIGGER WEIGHT | 2.0 - 2.9 kg / 4.5-6.5 lb | | 2.5 - 4.0 kg / 5.5 -9.0 lb | | |

ALL SPECIFICATIONS SUBJECT TO CHANGE | VISIT SIGSAUER.COM FOR ADDITIONAL INFORMATION

AMMO

ELITE PERFORMANCE AMMUNITION

SIG V-CROWN® & FMJ

JHP and FMJ Pistol Cartridges

SIG V-Crown defensive rounds combine perfected material specifications and fine-tuned design innovations. Featuring a stacked hollow point cavity, to deliver exceptional on target energy, with maximum weight retention and optimal expansion for the ultimate in stopping power.

Engineered to match SIG V-Crown™ ballistics for a more seamless transition from training to carry ammunition. SIG FMJ delivers round after round of affordable, premium-level performance. Featuring dependable primers, SIG FMJ durable copper-jacketed bullets match the point-of-impact, recoil and energy of the SIG V-Crown loads.



9MM LUGER



45 AUTO

FEATURES

- ▶ Brass Cartridge Cases
- ▶ Dependable Primers
- ▶ Clean Burning Powders
- ▶ Fully Reloadable
- ▶ Made in the U.S.A.
- ▶ Manufactured to SAAMI Standards

SIG MATCH

Precision Match Grade

SIG Match Grade rifle rounds are engineered to excel in today's precision auto-loading platforms, as well as bolt-action rifles. Utilizing optimized shell case metallurgy and premium primers, each round is precision-loaded using state-of-the-art, electromechanical monitoring for geometric conformity, and all are 100% inspected.



PRECISION 300 BLACKOUT

FEATURES

- ▶ Minimal Velocity Variation
- ▶ Precision Loaded for Conformity
- ▶ Renowned Sierra MatchKing® Projectile for OTM Rounds
- ▶ Temperature Stable Propellants



300BLK SUBSONIC



300BLK SUPERSONIC

SIG 300BLK Subsonic 220gr

SIG propellant chemistry has been optimized to produce the ideal amount of down-bore pressure for cycling both piston and gas-driven platforms, with or without sound suppression. SIG 300BLK Subsonic rounds minimize recoil, sound and muzzle flash, while maximizing the number of hits on target.

SIG 300BLK Supersonic 125gr

The ultimate rounds for precision shots at extended range, SIG 300BLK Supersonic features Sierra MatchKing® projectiles in a pointed meplat design for maximum velocity retention - yielding flatter trajectories and more on-target energy.



Engineered with the SIG MCX® mission configurable rifle in mind, SIG 300BLK runs with all standard NATO magazines.

| CALIBER | BULLET WEIGHT (g) | BULLET STYLE | VELOCITY IN FPS | | | | | ENERGY IN FT-LBS | | | | | TRAJECTORY IN INCHES | | | | |
|---------|-------------------|--------------|-----------------|---------|---------|---------|---------|------------------|--------|---------|---------|---------|----------------------|---------|---------|---------|---------|
| | | | MUZZLE | 100 YDS | 200 YDS | 300 YDS | 400 YDS | 500 YDS | MUZZLE | 100 YDS | 200 YDS | 300 YDS | 400 YDS | 500 YDS | 100 YDS | 200 YDS | 300 YDS |

SIG MATCH RIFLE

| | | | | | | | | | | | | | | | | | | | |
|---------|-----|-----|------|------|------|------|------|------|------|------|------|------|------|------|-----|------|-------|-------|-------|
| 223 REM | 77 | OTM | 2750 | 2499 | 2262 | 2038 | 1828 | 1633 | 1293 | 1068 | 875 | 710 | 571 | 456 | 0.0 | -4.1 | -15.0 | -34.3 | -64.1 |
| 308 WIN | 168 | OTM | 2700 | 2505 | 2318 | 2138 | 1967 | 1805 | 2719 | 2340 | 2003 | 1705 | 1443 | 1215 | 0.0 | -4.1 | -14.6 | -32.8 | -59.9 |
| 308 WIN | 175 | OTM | 2600 | 2424 | 2256 | 2094 | 1939 | 1791 | 2626 | 2284 | 1977 | 1703 | 1460 | 1246 | 0.0 | -2.9 | -12.7 | -30.4 | -57.4 |

| CALIBER | BULLET WEIGHT (g) | BULLET STYLE | VELOCITY IN FPS | | | | ENERGY IN FT-LBS | | | | TRAJECTORY IN INCHES | | |
|---------|-------------------|--------------|-----------------|--------|--------|---------|------------------|--------|--------|---------|----------------------|--------|---------|
| | | | MUZZLE | 25 YDS | 50 YDS | 100 YDS | MUZZLE | 25 YDS | 50 YDS | 100 YDS | 25 YDS | 50 YDS | 100 YDS |

SIG V-CROWN

| | | | | | | | | | | | | | |
|------------|-----|----------|------|------|------|------|-----|-----|-----|-----|-----|-----|-------|
| 9MM LUGER | 115 | JHP | 1185 | 1125 | 1076 | 1000 | 359 | 324 | 296 | 255 | 0.6 | 0.0 | -7.0 |
| | 124 | | 1165 | 1102 | 1051 | 973 | 374 | 334 | 304 | 261 | 0.6 | 0.0 | -7.3 |
| | 147 | | 985 | 958 | 934 | 891 | 317 | 300 | 285 | 259 | 0.9 | 0.0 | -9.5 |
| 45AUTO | 185 | JHP | 995 | 953 | 917 | 855 | 407 | 373 | 345 | 300 | 0.9 | 0.0 | -9.8 |
| | 200 | | 918 | 900 | 884 | 853 | 374 | 360 | 347 | 323 | 0.8 | 0.0 | -10.1 |
| | 230 | | 830 | 810 | 791 | 755 | 352 | 335 | 319 | 291 | 1.4 | 0.0 | -13.4 |
| 9MM BONDED | 124 | BV-CROWN | 1200 | 1129 | 1072 | 986 | 396 | 351 | 316 | 267 | 0.6 | 0 | -7.1 |
| | 147 | BV-CROWN | 985 | 958 | 934 | 891 | 317 | 300 | 285 | 259 | 0.9 | 0 | -9.5 |

SIG FMJ

| | | | | | | | | | | | | | |
|-----------|-----|-----|------|------|------|-----|-----|-----|-----|-----|-----|-----|-------|
| 9MM LUGER | 115 | FMJ | 1185 | 1125 | 1076 | 999 | 359 | 323 | 296 | 255 | 0.6 | 0.0 | -7.0 |
| | 124 | FMJ | 1165 | 1111 | 1065 | 993 | 374 | 340 | 312 | 272 | 0.6 | 0.0 | -7.1 |
| | 147 | FMJ | 985 | 960 | 936 | 895 | 317 | 301 | 286 | 261 | 0.6 | 0.0 | -9.4 |
| 45AUTO | 230 | FMJ | 830 | 816 | 803 | 777 | 352 | 340 | 329 | 308 | 1.4 | 0.0 | -12.9 |

| CALIBER | BULLET WEIGHT (g) | BULLET STYLE | BARREL LENGTH | VELOCITY IN FPS | | | | APPLICATION | FEATURES |
|-------------------|-------------------|--------------|---------------|-----------------|-----------|----------|-----------|-------------|--|
| | | | | 5.5 INCH | 6.75 INCH | 9.0 INCH | 16.0 INCH | | |
| SIG 300BLK | | | | | | | | | |
| 300BLK SUPERSONIC | 125 (8.10G) | OTM | ALL | 1767 | 1825 | 1936 | 2200 | MATCH GRADE | ▶ SIERRA MATCHKING PROJECTILE ▶ EXCELLENT VELOCITY CONSISTENCY ▶ POINTED TIP FOR SMOOTH FEEDING ▶ BRASS SHELL CASE |
| 300BLK SUPERSONIC | 120 (7.78G) | HT | LESS THAN 9" | 1808 | 1897 | N/A | N/A | DUTY | ▶ OPTIMIZED FOR EXPANSION FROM SHORT BARRELS ▶ 1.8X EXPANSION ▶ VIRTUALLY 100% WEIGHT RETENTION ▶ BLACK COATED BRASS SHELL CASE |
| 300BLK SUBSONIC | 220(14.26G) | OTM | ALL | 825 | 850 | 905 | 1000 | MATCH GRADE | ▶ SIERRA MATCHKING PROJECTILE ▶ EXCELLENT VELOCITY CONSISTENCY ▶ BOATTAIL ▶ BRASS SHELL CASE |

ALL SPECIFICATIONS SUBJECT TO CHANGE | VISIT SIGSAUER.COM FOR ADDITIONAL INFORMATION

OPTICS

SIG SAUER® ELECTRO-OPTICS

Every revolution begins with a need for change. Assembling an elite team of leading electro-optics experts from around the world, we tasked them to engineer and design truly innovative optics which exceed the grueling expectations of today's modern soldiers, and law enforcement officers.

Fusing together advanced electronic technologies, with superior high-definition glass, and military-inspired designs to achieve maximum clarity, accuracy, and performance; SIG SAUER Electro-Optics are reliable shot after shot.



Selected by the U.S. Army as the official optic for the Squad Designated Marksman Rifle (SDMR) System.

TANGO6T™ TACTICAL RIFLESCOPES



TANGO6T 1-6X24 FFP

30MM MAINTUBE

- ▶ Designed for AR Platforms
- ▶ Ideal for Close to Mid-Range Tactical Engagements
- ▶ Fiber Optic Power Indicator
- ▶ Multiple Reticle Options Available
- ▶ Daylight Bright Illumination with Locking Illumination Dial
- ▶ Assembled in the U.S.A.



Available in Black

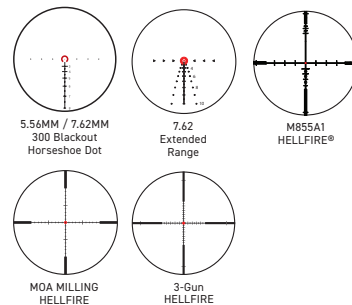
Standard Features

- ▶ 6x Super-Zoom Advanced Optical System
- ▶ Throwlever Included with all TANGO6T SKUs
- ▶ Fast Focus Eyepiece
- ▶ Waterproof (IPX-7 rated) and Fog-Proof Performance
- ▶ Night Vision Illuminated Reticle Settings with Locking Illumination Dial
- ▶ Laser Engraved Mounting Line to Align Rifle Scope to Scope Rings (TANGO6T Models)
- ▶ Proprietary Flat Dark Earth (FDE) or Black Anodize Finish Options (TANGO6T Models)

RETICLES

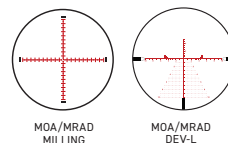
1-6X24MM

- 5.56/7.62 Horseshoe Dot FFP
- 7.62 Extended Range M855A1 HELLFIRE MOA Milling HELLFIRE
- 3 Gun HELLFIRE



3-18X44MM
5-30X56MM

- DEV-L MOA Milling, FFP
- DEV-L MRAD Milling, FFP
- MOA Milling, FFP
- MRAD Milling, FFP



TANGO6T™ 1-6X24 SFP

30MM MAINTUBE

- ▶ Designed for AR Platforms
- ▶ Ideal for Close to Mid-Range Tactical Engagements
- ▶ Fiber Optic Power Indicator
- ▶ Multiple Reticle Options Available
- ▶ HellFire® Reticles: Fiber Optics to Vary Intensity of Central Aiming Point (SFP)
- ▶ Daylight Bright Illumination with Locking Illumination Dial



Available in FDE



TANGO6 3-18X44 WITH LEVELPLEX

34MM MAINTUBE

- ▶ Designed for AR and Bolt Action Platforms
- ▶ Ideal for Mid-Range Tactical Engagements and Hunting
- ▶ Offered in FFP with Multiple Reticle Options
- ▶ LEVELPLEX Anti-Cant System
- ▶ Fiber Optic Power Indicator



TANGO6 5-30X56 WITH LEVELPLEX

34MM MAINTUBE

- ▶ Designed for AR and Bolt Action Platforms
- ▶ Long-Range Precision Shooting, Tactical Engagements and Long-Range Hunting
- ▶ Fiber Optic Power Indicator
- ▶ Offered in FFP with Multiple Reticle Options
- ▶ LEVELPLEX Anti-Cant System



ALPHA2™ SCOPE MOUNTS

30mm and 34mm 0 MOA and 20 MOA Cant configurations

- ▶ Designed for AR and Bolt Action Platforms
- ▶ 0 or 20 MOA Cant Options
- ▶ Machined Steel Alloy
- ▶ Steel Weaver-Style Clamps
- ▶ To Rail (1/2in Nut): 65in/lbs
- ▶ To Scope (T15-TORX): 25in/lbs
- ▶ Epoxy Powder Coated
- ▶ Assembled in the U.S.A.

ALL SPECIFICATIONS SUBJECT TO CHANGE | VISIT SIGSAUER.COM FOR ADDITIONAL INFORMATION

ROME04T™

MIL-SPEC CLOSED RED DOT SIGHT

ROME04T 1X20MM

- ▶ Point-of-Aim is Point-of-Impact
- ▶ Unlimited Eye-Relief
- ▶ Quad Reticle System
- ▶ Ultra-Efficient Red LED Illumination System
- ▶ Lightweight 7075 Aluminum Main Housing and Components

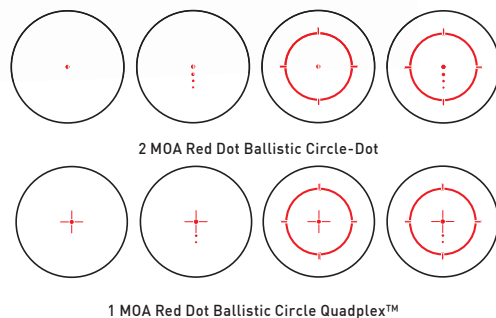
Available in FDE

Standard Features

- ▶ Designed For Modern Pistols, Carbines, and SMG
- ▶ Short and Medium Range Engagements and Recreational Shooting Across a Wide Range of Calibers and Light Conditions
- ▶ Fully Ruggedized and Impact-Resistant for the Toughest Environments
- ▶ Ultra Durable and Lightweight 7075 Aluminum Main Housing and Components, 1.41" Riser Mount with Additional Lower 1/3 Co-Witness Spacer
- ▶ Comes Standard with Solid and See-Through Lens Covers and Hex Bolt Mount
- ▶ Complete MIL-SPEC 810G Testing, Submersible up to 20 Meters
- ▶ Runtime in Excess of 100,000 Hours with Solar and Battery Usage
- ▶ Ballistic Circle-Dot and Ballistic CirclePlex Reticle Options
- ▶ Users Can Select from 4 Different Integrated Reticle Options (Dot, Circle-Dot, Dot with Holds, Circle-Dot with Holds)



ASSEMBLED IN U.S.A.



ROME01T™

RUGGEDIZED MINI-REFLEX SIGHT

ROME01T 1X30MM

- ▶ Lightweight Aircraft Grade CNC Aluminum Housing
- ▶ Features a Molded Glass Aspheric Lens with High Performance Coatings for Superior Light Transmittance and Zero Distortion
- ▶ Manual Illumination Controls that Remember your Last Used Settings

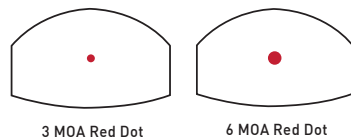
Available in FDE

Standard Features

- ▶ Our MOTACT™ (Motion Activated Illumination) Powers Up when it Senses Motion and Powers Down when it does not. Provides Optimum Operational Safety and Enhanced Battery Life
- ▶ The Top-Loading Battery Allows for Quick Battery Replacement Without Having to Remove the Sight from the Firearm
- ▶ Dependable Waterproof (IPX-7 rated for Complete Water Immersion up to 1 meter) and Fog-Proof Performance
- ▶ Mounts Directly to all SIG SAUER Pistols with an Optics Cut. Additional Mount Options Include 1913 Picatinny Mount with 1.41" Co-Witness Spacer, Keymod Mount, and Adapter Plates to Mount Directly to Many Popular Handgun Models. Mounts and Adapter Plates are Sold Separately
- ▶ Removable Protective Shroud Included
- ▶ Up to 20,000 hours of Battery Life and Available in 3 MOA and 6 MOA dot size and 12 Illumination Settings, Including 2 NV Settings



Removable Protective Shroud Included



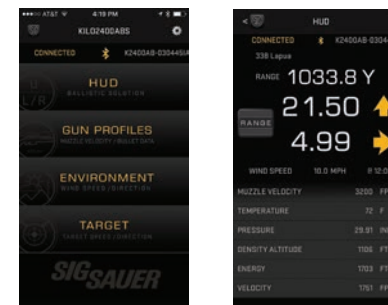
3 MOA Red Dot 6 MOA Red Dot

KILO2400ABS™

DIGITAL BALLISTIC RANGEFINDER

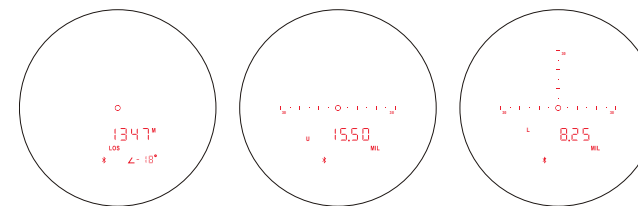
KILO2400ABS 7X25MM

- ▶ Ranges up to 2 Miles with the Revolutionary LightWave DSP™ Technology for the Fastest and Longest Distance Rangefinder Engine
- ▶ Features an Embedded Applied Ballistics Calculator and Bluetooth for Synchronizing with the Free SIG Ballistic App. Available on Both iOS and Android Platforms
- ▶ Integrated Temperature, Pressure, and Humidity Sensors for Real-Time Environmental Inputs to the Embedded Ballistic Calculator
- ▶ Digital Compass / Magnetometer / Inclinometer Provides Magnetic Heading and Incline for Long Distance Shooting and Coriolis Adjustment
- ▶ Includes a Tripod Adapter, Smartphone Jack WindMETER, Ballistic Nylon Molle Kit Bag, Nylon Carry Pouch, Tactical Pen/Stylus, Lanyard and 3 Spare Batteries
- ▶ New Milling Reticle with 2.4 MRAD Inner Diameter and 3 MRAD Outer Diameter Center Aiming Circle



KILO2400ABS syncs with a smart phone via the Applied Ballistic's Ballistic Solver app. Calculating long-range rifle trajectories for the perfect shot. (Smart phone app display shown.)

KILO2400ABS DISPLAY



Configurable reticle with 3 options: Center Aiming Circle only, Center Aiming Circle and Horizontal Milling Grid, and Center Aiming Circle and Horizontal and Vertical Milling Grid



Includes free app for Android & iOS, one-piece, solid-machined, tripod mount, TYR water resistant molle gear bag, wind meter, tactical pen/stylus, lanyard, and 3 batteries.

ALL SPECIFICATIONS SUBJECT TO CHANGE | VISIT SIGSAUER.COM FOR ADDITIONAL INFORMATION

JULIET[®]

MAGNIFIERS

Easily transition between close quarters and medium range targets with a flip of our JULIET magnifier. Alone, or with a Red Dot, the JULIET features a quick-release PowerCam mount that flips easily to one side when not in use. Built-in recoil lugs ensure zero hold even after removing and reinstalling.



JULIET6[™] 6X24MM

- ▶ Designed for Carabines and SMG
- ▶ Power and Versatility of a 1-6x Scope, in a Modular System that is Lighter Weight
- ▶ Adjustable Base Mount Provides Customization for Red Dot Sight Combination
- ▶ STEALTH ID[™] Trapezoidal Design Breaks up the Optic Shape and Visibility Profile
- ▶ Assembled in the U.S.A.

Standard Features

- ▶ Quick Release Mount with Built-In Recoil Lugs for a Repeatable Zero
- ▶ PowerCam 90° Mount Pivots to the Side When not Needed
- ▶ Adjustable Height Using Included Spacers
- ▶ Use Stand-Alone or Aligned with a Red Dot Sight
- ▶ Aerospace Grade 6061 Aluminum Housing Ensures a Lifetime of Reliable Service
- ▶ Waterproof Rated IPX-8 (20 Meters for 1 Hour)



PowerCam 900 Mount



Quick Release Mount with Built-in Recoil Lugs



JULIET4[™] 4X24MM

- ▶ Designed for Carabines and SMG
- ▶ Adjustable Base Mount Provides Customization for Red Dot Sight Combination
- ▶ STEALTH ID[™] Trapezoidal Design Breaks up the Optic Shape and Visibility Profile
- ▶ Power and Versatility of a 1-4x Scope, in a Modular System that is a Lighter Weight
- ▶ Adjustable Base Mount Provides Customization for Red Dot Sight Combination
- ▶ Use Stand-Alone or Aligned with a Red Dot Sight
- ▶ Assembled in the U.S.A.

Available in Coyote



JULIET3[™] 3X24MM

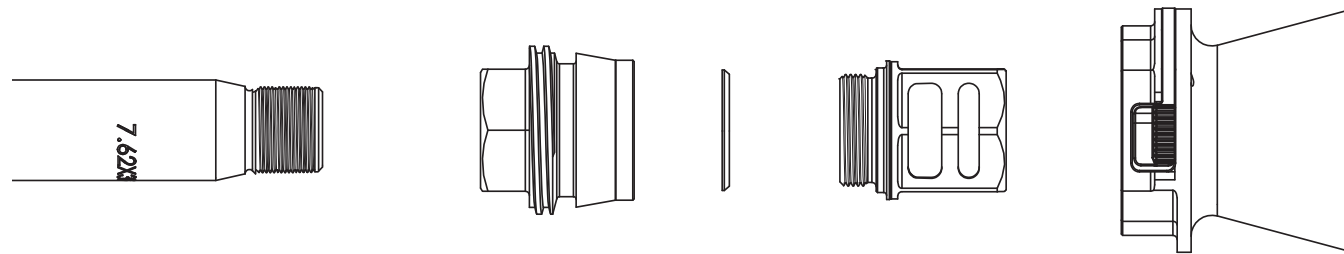
- ▶ Designed for Carabines and SMG
- ▶ Adjustable Base Mount Provides Customization for Red Dot Sight Combination
- ▶ STEALTH ID[™] Trapezoidal Design Breaks up the Optic Shape and Visibility Profile
- ▶ Power and Versatility of a 1-3x Scope, in a Modular System That is a Lighter Weight
- ▶ Adjustable base Mount Provides Customization for Red Dot Sight Combination
- ▶ Use Stand-Alone or Aligned with a Red Dot Sight
- ▶ Assembled in the U.S.A.

ALL SPECIFICATIONS SUBJECT TO CHANGE | VISIT SIGSAUER.COM FOR ADDITIONAL INFORMATION

SUPPRESSORS

SIGNATURE REDUCTION DEVICES

SIG SAUER engineers have developed the next generation of suppressors. With decades of product design and R&D experience under our belts, suppressors are not treated as bolt-on accessories. At SIG, it is understood that suppressors interact with your firearms system and can affect accuracy, reliability, back pressure, and other critical factors. We design our suppressors to be part of a completely integrated system to maximize overall performance, and as a result we build the most advanced, most dependable suppressors the world has ever seen, or heard.



ALIGNMENT

TAPER-LOK® MOUNT

- ▶ Innovative Tapers Self-Center the Suppressor Bore and Rifle Bore, Greatly Reducing Point-of-Impact Shift and Group Dispersion
- ▶ A Larger Contact Area Maximizes Retention During Repeated Firing, Requiring About 20% More Force to Remove than it did to Install
- ▶ Taper-Lok Mounts are Available in Multiple Thread Pitches and Calibers
- ▶ SIG SAUER Tapered Rifle Barrels are Backwards Compatible with Legacy Suppressors and Muzzle Devices Designed with Older 90 Degree Technology with an Adapter Provided with the Firearm

MODULARITY

MUZZLE DEVICES



QCB FLASH HIDER



DOUBLE PORT BRAKE

PRECISION PERFORMANCE

QD SUPPRESSOR

- ▶ Locking Onto the Taper-Lok Mount, QD Suppressors Feature a Secondary Retention Latch for More Secure Attachment During Fire
- ▶ Wrench Flats Allow for Easy Removal, even with Heavy Carbon Build-Up. The Wrench will Automatically Disengage the Secondary Retention Latch with no Ratchet Teeth to Wear Out
- ▶ Sub-Caliber Mounts are also Available for True Multi-Caliber Versatility

| RIFLE SUPPRESSOR MATERIALS | SIG ADVANTAGE | CALIBER | FIRST TUBELESS RIFLE SUPPRESSORS |
|--|--|---|--|
| TITANIUM Greater Volume, Lightweight, best for Full-Length Barrels | <ul style="list-style-type: none"> ▶ Tubeless Design ▶ Precision QD Mounting System | .338 LAPUA MAGNUM | <ul style="list-style-type: none"> ▶ Greater Internal Volume ▶ Greater Sound Reduction |
| INCONEL Best for Short Barrel Rifles, For Heavy Duty use and Greater Durability | <ul style="list-style-type: none"> ▶ Self-Centering Taper-Lok QD System ▶ Comes with Muzzle Brake ▶ Easy Muzzle Device Timing | 7.62NATO/.300WIN MAG/300BLK 5.56NATO | <ul style="list-style-type: none"> ▶ Reduced Flash ▶ Increased Durability ▶ Lighter Weight ▶ Greater Reliability |
| PISTOL AND RIFLE SUPPRESSOR MATERIALS | SIG ADVANTAGE | CALIBER | GRADE 9 TITANIUM TUBES |
| TITANIUM Greater Volume, Lightweight, best for Full-Length Strength, Lightweight Tubes | <ul style="list-style-type: none"> ▶ User-Serviceable | 9MM | <ul style="list-style-type: none"> ▶ Baffles Made from 17-4 Stainless Steel for Greater Durability |
| 17-4 STAINLESS STEEL All 17-4 Stainless Baffles for Greater Durability, Heavy use | <ul style="list-style-type: none"> ▶ All Baffles are Stainless Steel ▶ Comes with Alternate Pistons ▶ Titanium Outer Tube | 45AUTO 22LR/22MAGNUM | <ul style="list-style-type: none"> ▶ Piston Suppressors Have 21 Points of Adjustment ▶ SRD45 can use Sub-Caliber Pistons for Multi-Caliber Versatility ▶ Comes with Both Most Common Imperial & Metric Pistons ▶ Fixed barrel Adaptor Included |

| | CALIBER | SIZE W/ MOUNT | SIZE W/O MOUNT | WEIGHT W/ MOUNT | WEIGHT W/O MOUNT | MOUNT | MATERIAL |
|--------------------------|----------------------------|------------------------------|-----------------------------|-------------------|-------------------|--|---|
| RIFLE SUPPRESSORS | | | | | | | |
| MIL-SRD338TI-QD | .338 LM | 248 x 44 mm / 9.75 x 1.75 in | 241 x 41 mm / 9.5 x 1.75 in | 0.63 kg / 22.4 oz | 0.54 kg / 19.4 oz | M18x1.5mm Taper-Lok® Fast-Attach Muzzle Device Included | Grade 5 Titanium |
| MIL-SRD762-16 | 7.62 NATO / .300 WM 300BLK | N/A | 226 x 44 mm / 8.9 x 1.75 in | N/A | 0.87 kg / 30.9 oz | 5/8"-24 tpi Taper-Lok Direct Thread | Inconel 718 and Stainless Steel |
| MIL-SRD762-QD | 7.62 NATO / .300 WM 300BLK | 191 x 41 mm / 7.5 x 1.62 in | 185 x 41 mm / 7.3 x 1.62 in | 0.61 kg / 21.8 oz | 0.61 kg / 18.9 oz | 5/8"-24 tpi Taper-Lok Fast-Attach Muzzle Device Included | Inconel 718 and Stainless Steel |
| MIL-SRD762Ti | 7.62 NATO / .300 WM 300BLK | N/A | 236 x 44 mm / 9.3 x 1.75 in | N/A | 0.54 kg / 19.1 oz | 5/8"-24 tpi Taper-Lok Direct Thread | Grade 5 Titanium |
| MIL-SRD762TI-QD | 7.62 NATO / .300 WM 300BLK | 218 x 44 mm / 8.6 x 1.75 in | 213 x 44 mm / 8.4 x 1.75 in | 0.56 kg / 19.8 oz | 0.47 kg / 16.9 oz | 5/8"-24 tpi Taper-Lok Fast-Attach Muzzle Device Included | Grade 5 Titanium |
| MIL-SRD556 | 5.56 NATO | N/A | 157 x 41 mm / 6.2 x 1.62 in | N/A | 0.41 kg / 14.8 oz | 1/2"-28 tpi Taper-Lok Direct Thread | Inconel 718 and Stainless Steel |
| MIL-SRD556-QD | 5.56 NATO | 165 x 41 mm / 6.5 x 1.6 in | 163 x 41 mm / 6.4 x 1.62 in | 0.50 kg / 17.7 oz | 0.44 kg / 15.6 oz | 1/2"-28 tpi Taper-Lok Fast-Attach Muzzle Device Included | Inconel 718 and Stainless Steel |
| PISTOL SILENCERS | | | | | | | |
| MIL-SRD9 | 9mm | 185 x 35 mm / 7.3 x 1.38 in | N/A | 0.35 kg / 12.6 oz | 0.35 kg / 12.6 oz | 1/2"-28 tpi and M13.5x1LH | Grade 9 Titanium and 17-4 Stainless Steel Baffles |
| MIL-SRD9-MPX | 9mm | 175 x 35 mm / 6.9 x 1.38 in | N/A | 0.29 kg / 9.9 oz | 0.19 kg / 6.9 oz | 1/2"-28 tpi and M13.5x1LH | Grade 9 Titanium and 17-4 Stainless Steel Baffles |



SRD338TI-QD SRD762TI SRD762 SRD556 MIL-SRD9-MPX MIL-SRD9

ALL SPECIFICATIONS SUBJECT TO CHANGE | VISIT SIGSAUER.COM FOR ADDITIONAL INFORMATION



Ultimate Training Munitions

AS REAL AS IT GETS

Ultimate Training Munitions is the world leader in providing law enforcement communities with the most realistic and non-lethal force-on-force, short range training system. Police officers around the world have placed their trust in UTM to deliver realistic training. Professionals whose lives depend on the best training possible know that they can always count on the safest, most accurate, and most reliable non-lethal training ammunition available.

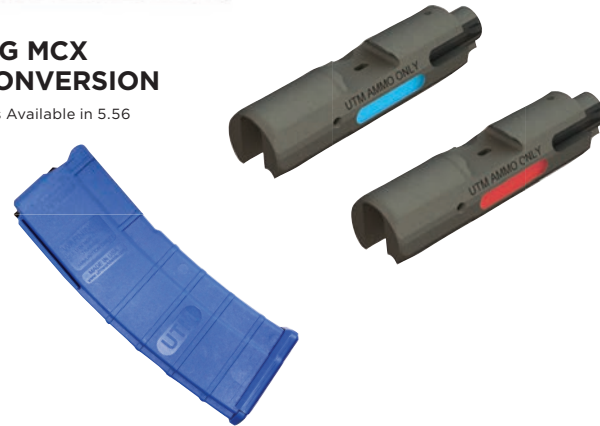
UTM PISTOL CONVERSION KITS

- ▶ Easy to Install
- ▶ Simple Exchange of Slide and Barrel, or Slide Assembly
- ▶ Feel and Function of "Live" Ammunition
- ▶ Unique Chamber Profile That Will Not Allow "Live/Lethal" Ammunition to Completely Chamber
- ▶ Great for Law Enforcement and Military Communities
- ▶ Fits P320 Full-Size, Compact, Carry in 9mm, and .40S&W
- ▶ Also Available for the Following SIG SAUER Models: P226, P228/P229, SP2022



SIG MCX CONVERSION

Kits Available in 5.56



SIG MCX UTM RIFLE CONVERSION KIT

- ▶ Easy to Install
- ▶ Simple Exchange of the Bolt and Carrier Assembly
- ▶ Feel and Function of "Live" Ammunition
- ▶ Offset Firing Pin design Strikes Outside of "Live/Lethal" Ammunition Primer Pocket for Added Safety while Using UTM Ammunition
- ▶ Includes Bolt Carrier and Blue Training Magazine
- ▶ Great for Law Enforcement and Military Communities



SIG516/SIGM400 UTM RIFLE CONVERSION KIT

- ▶ Easy to Install
- ▶ Simple Exchange of the Bolt Carrier Group
- ▶ Feel and Function of "Live" Ammunition
- ▶ Offset Firing Pin Design Strikes Outside of "Live/Lethal" Ammunition Primer Pocket for Added Safety while Using UTM Ammunition
- ▶ Includes Bolt and Blue Training Magazine
- ▶ Great for Law Enforcement and Military Communities

To learn more, visit utmworldwide.com/sigpistols



TRAINING

SIGNATURE REDUCTION DEVICES
TRAIN WITH THE PROFESSIONALS

The SIG SAUER AcademySM is internationally recognized for the use of superior training techniques with unmatched results. Armed professionals and responsible citizens continuously choose to train at the SIG SAUER Academy for all their firearms, tactical, and related training needs.

SIG SAUER[®] ACADEMY



SIG SAUER ACADEMY COURSES

When it comes to the use of firearms in any situation, a person will rarely rise to the occasion, but instead will default to the level of their training. It's this principle, and this reality that we at the SIG SAUER AcademySM have dedicated ourselves. With a team of world-class instructors from a broad range of backgrounds, the SIG SAUER Academy provides the finest firearms and tactics training available today. Using our adaptive, performance-based training methods we can help develop and expand the abilities of virtually any level of firearms user from beginners to the most experienced. Our nearly 150 acre, state-of-the-art facility provides us the ability to train in nearly every discipline, creating almost any type of environment, helping to prepare for practically any situation.

The SIG SAUER Academy and its staff of professionals is committed to delivering the most realistic, fundamentally sound training experience possible, with a promise to improve the skills of everyone who trains with us, guaranteed. It's a promise we don't make lightly, knowing that those who come here rely on us to give them the best training available. They refuse to settle for anything less, and so do we.

LAW ENFORCEMENT / MILITARY

SIG SAUER Academy is dedicated to providing the highest level of global training for military and law enforcement professionals. Any course can be conducted remotely or customized to meet agency or department needs. Custom course design and implementation allow for any desired capability and duration of training.

INSTRUCTOR DEVELOPMENT

The SIG SAUER Academy takes special care in preparing knowledgeable men and women to become effective firearms instructors for students of all levels. It takes more than subject mastery to be a good instructor. Proven techniques successfully transfer essential skills and knowledge from instructor to student in less time. Instructor candidates practice teaching techniques acquired with each other, and are rigorously evaluated for classroom and range skill mastery.

ARMORER CERTIFICATION

Armorer's certification courses give the student a complete understanding of SIG SAUER firearms, proper maintenance, and inspection, in order to preserve the factory warranty. Students who successfully complete these courses receive a three year armorer certification.

For course descriptions, class schedules, and more information, visit: SIGSAUERacademy.com



**NO MATTER WHAT YOU SHOOT,
WE'LL MAKE YOU A BETTER SHOOTER. GUARANTEED.**